



## Arlington Public Schools **McKinley Elementary School**

March 5, 2013

PTA

# Experience



- **National**
  - AASHTO
  - FHWA
- **Regional**
  - WMATA
  - Northern Virginia Regional Park Authority
  - MWCOG
  - National Park Service
- **State**
  - VDOT
  - MDOT
- **Local**
  - Arlington
  - Fairfax
  - Alexandria
  - Vienna
  - DDOT
  - Loudoun
  - Falls Church
  - Tysons Corner



## Guide for the Development of Bicycle Facilities 2012 • Fourth Edition



# Safe Routes to School



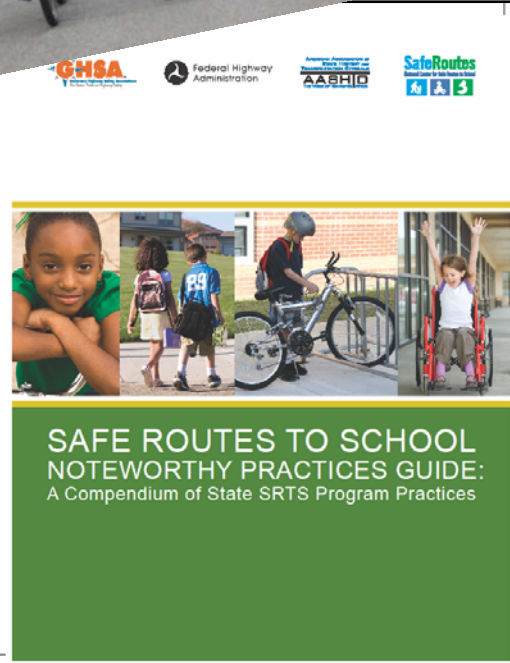
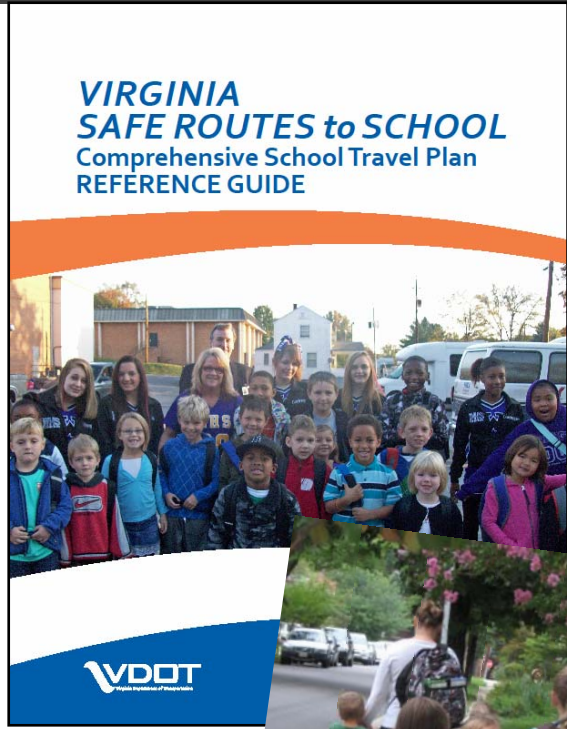
- Education
- Encouragement
- Enforcement
- Engineering
- Evaluation





# Safe Routes to School Experience

- National
- State
- Local
- Very local



# TDG Role in McKinley ES Expansion



- Gather baseline transportation data
  - Self-reported
  - Transportation counts and observations
  - Assess existing conditions





# Baseline Transportation Data

- Self-reported
- McKinley SRTS Team
- Student, parent, staff and visitor surveys

### Safe Routes to School Students Arrival and Departure Tally Sheet

+ CAPITAL LETTERS ONLY – BLUE OR BLACK INK ONLY +

School Name:  Teacher's First Name:  Teacher's Last Name:

Grade: (PK,K,1,2,3...)  Monday's Date (Week count was conducted)  Number of Students Enrolled in Class:

0 2                      M M   D D   Y Y Y Y                      1 5

- Please conduct these counts on two of the following three days Tuesday, Wednesday, or Thursday. (Three days would provide better data if counted)
- Please do not conduct these counts on Mondays or Fridays.
- Before asking your students to raise their hands, please read through all possible answer choices so they will know their choices. Each Student may only answer once.
- Ask your students as a group the question "How did you arrive at school today?"
- Then, reread each answer choice and record the number of students that raised their hands for each. Place just one character or number in each box.
- Follow the same procedure for the question "How do you plan to leave for home after school?"
- You can conduct the counts once per day but during the count please ask students both the school arrival and departure questions.
- Please conduct this count regardless of weather conditions (i.e., ask these questions on rainy days, too).

**Step 1.** Fill in the weather conditions and number of students in each class

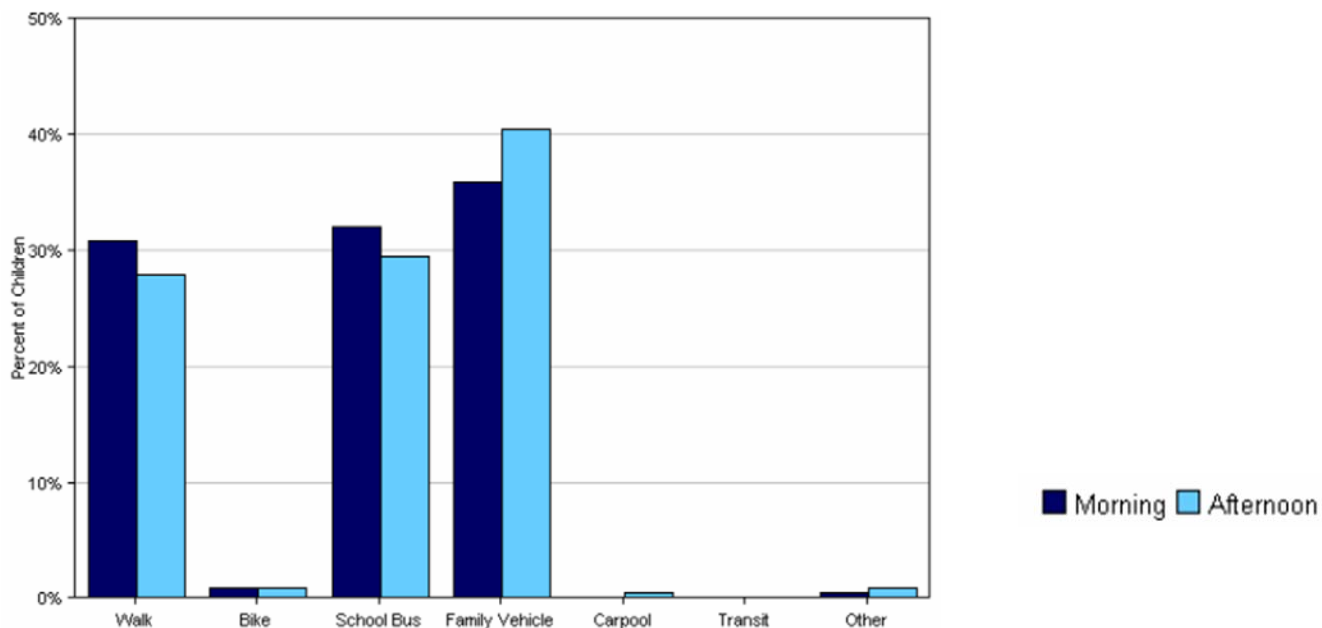
**Step 2.** AM – "How did you arrive at school today?" Record the number of hands for each answer. PM – "How do you plan to leave for home after school?" Record the number of hands for each answer.

Key	Weather		Student Tally	Walk	Bike	School Bus	Family Vehicle	Carpool	Transit	Other
	S	N	Number in class when count made	-	-	-	Only with Children from your family	Riding with children from other families	City bus, subway, etc.	Skate-board, scooter, etc.
Sample AM	S	N	2 0	2	3	8	3		3	1
Sample PM		R	1 9	3	3	8	1	2	2	
Tues. AM										
Tues. PM										
Wed. AM										
Wed. PM										
Thurs. AM										
Thurs. PM										

Please list any disruptions to these counts or any unusual travel conditions to/from the school on the days of the tally.

+  +





### School Arrival

Distance	Number within Distance	Walk	Bike	School Bus	Family Vehicle	Carpool	Transit	Other
Less than 1/4 mile	34	71%	3%	3%	21%	0%	0%	3%
1/4 mile up to 1/2 mile	51	51%	0%	0%	49%	0%	0%	0%
1/2 mile up to 1 mile	46	30%	2%	26%	41%	0%	0%	0%
1 mile up to 2 miles	59	8%	0%	61%	31%	0%	0%	0%
More than 2 miles	30	0%	0%	73%	27%	0%	0%	0%



# Baseline Transportation Data



- Automated counts
  - Video counts of vehicular, pedestrian, bicycle movements at intersections and school driveways
  - Automatic Traffic Recorder (ATR) counts to collect speed and vehicular volume data
- Field counts/observations
  - Parking occupancy
  - Driveway queue length
  - Pedestrian and bicycle counts.
  - Travel pattern observations



- Existing infrastructure
  - Identify priority walking and bicycling routes
  - Evaluate conditions for pedestrians/bicyclists (gaps, barriers)
  - Vehicular level of service at intersections
  - Assess traffic calming and safety needs

# Timeline



- SRTS Team meeting
  - *Week of March 11*
- Observation #1 and Transportation Counts
  - *Week of March 18*
- Observation #2, Surveys, Assess Infrastructure
  - *After Spring Break*
- Present Findings
  - *Late May*