



**MCKINLEY ES ADDITION/RENOVATION
PTA / Community Meeting
September 10th 2013**

Projected Capacity Deficit

	Capacity (2012)	Projected Enrollment	
		2017	2021
Elementary	12,036	14,234	14,728
Deficit		-2,198	-2,692
Middle	5,014	5,600	6,752
Deficit		-586	-1,738
High	5,903	6,739	8,179
Deficit ^a		-836	-2,276
Total Capacity+	22,953	22,953	22,953
Total Enrollment*	22,301	26,573	29,659
Seat Deficit	652	-3,620	-6,706

^aDeficits do not include future capital improvements planned.

+ Total capacity numbers do not include relocatables.

*Enrollment numbers do not include some alternative education programs.

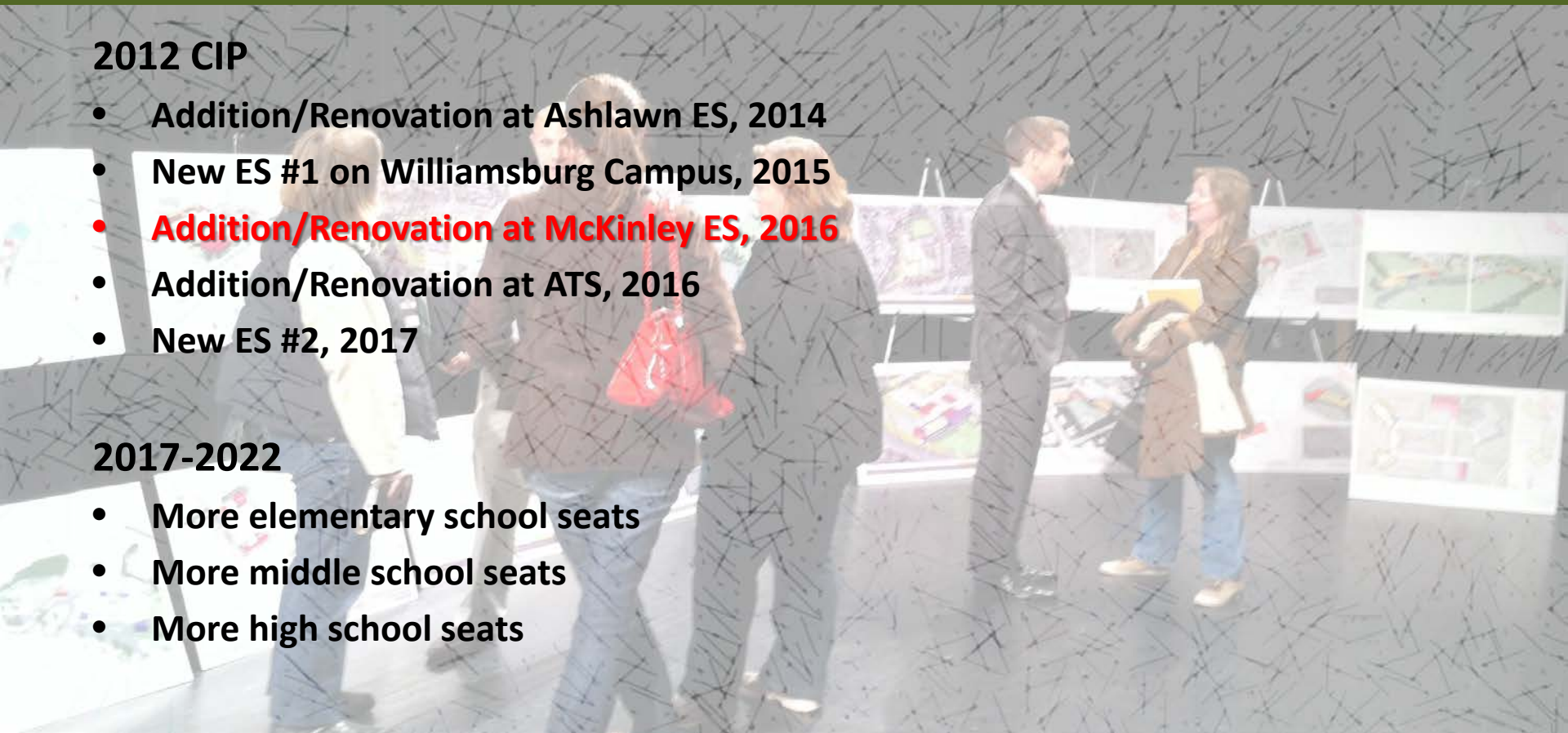
More Seats for Students

2012 CIP

- Addition/Renovation at Ashlawn ES, 2014
- New ES #1 on Williamsburg Campus, 2015
- **Addition/Renovation at McKinley ES, 2016**
- Addition/Renovation at ATS, 2016
- New ES #2, 2017

2017-2022

- More elementary school seats
- More middle school seats
- More high school seats



Stakeholder Process

Ed Specs

APS

- Program
- Educational vision
- Pedagogy
- Space character
- Educational pros + cons
- Opportunities
- 21st century learning
- Flexibility

BLPC

McKinley Community

- Site
- Community concerns/use
- Design input
- School pros/cons
- Circulation
- Architectural character/massing
- Parking

PFRC

County

- Building siting
- Transportation/neighborhood circulation
- Architectural character/massing
- Community vision
- Environmental concerns
- Parking

Communications:

PTA; Civic Associations;
Facilities Advisory Council

- **PTA**
- *Holly West; President*
- *Errin Matecheck: Past President, ematecheck@yahoo.com*
- **Madison Manor representative**
- *Ben Thompson; benthompson72@gmail.com*
- **Dominion Hills representative:**
- *Tom Fatouros; fatouros@gmail.com*
- **Westover Representative:**
- *Christine Wisecarver; chrisbwise@gmail.com*
- **Bluemont representative: TBD**
- **Facility Advisory Council**
- *Kelly King; kmkingmail@yahoo.com*
- ***There are additional members of the various groups noted above***

Communications: APS

APS Contacts:

- **Aji Robinson:** Project Manager: McKinley ES
- 703.228.7738, ajibola.robinson@apsva.us

- **Scott Prisco:** Director, Design & Construction
- 703.228.6609. Scott.Prisco@apsva.us

- **APS project webpage & contact email:**
- <http://www.apsva.us/Page/21234>
- http://www.apsva.us/newes1_McKinley.communications@apsva.us

Design Team

Architects:

- **Hord Coplan Macht (HCM)**
- <http://www.hcm2.com/>
- Design Consultant leading a team of design professionals for the project

Multi-modal transportation study:

- **Toole Design Group**
- <http://www.tooledesign.com/>
- Consultant for traffic, parking, TDM, Safe Routes to School

Addition / Renovation

McKINLEY ELEMENTARY SCHOOL

1030



McKinley Expansion Scope

- Expand from **443** to **665** seats **(+225)** (All trailers will be removed upon completion)
- Construct two or three story addition
- Add about **27,000** square feet
- Add about **12** rooms (**9** classrooms + support)
- Adapt standard educational specifications
- Renovate existing building partially
- Address traffic and parking
- Maintain existing site amenities & improve site
- Phase construction to keep school fully operational
- Meet budget

McKinley BLPC meeting schedule

- **14 proposed meetings**
- **All meetings will start at 7:00pm in the McKinley Library**

2013

September 11th
September 24th
October 8th
October 22nd
November 5th
November 19th
December 4th
December 17th

2014

January 14th
January 28th
February 11th
February 25th
June
November

McKinley PFRC meeting schedule

- **7 proposed meetings**
- **All meetings will start at 7:00pm in the McKinley Library**
 - *(unless otherwise noted)*

2013

September 18th
October 16th
November 20th
December 18th

2014

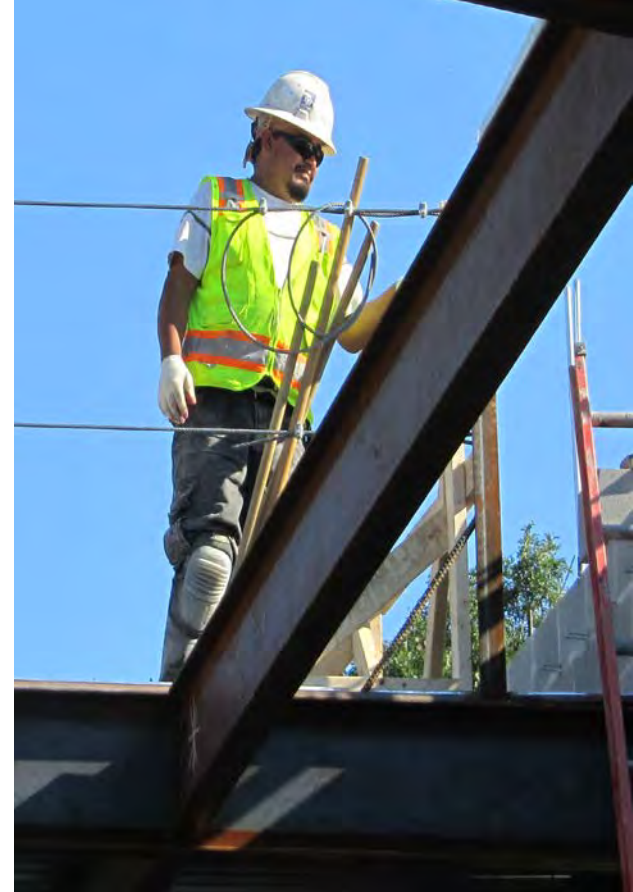
(2014 dates to be finalized)

January 15th
February 19th
November

Budget

- New construction: \$ 7,000,000
- Renovation: \$ 1,620,000
- Site work: \$ 1,620,000
- Contingencies: \$ 2,220,000
- Escalation: \$ 730,000
- Soft costs: \$ 2,910,000
- MC/MM fund: \$ 2,500,000
- **Total project costs: \$18,600,000**

100% funded from bond



Schedule

Phase	Start	Finish
Baseline Transportation Study	March 2013	April 2013
Architect Selection	July 2013	August 2013
Concept Design	September 2013	November 2013
Schematic Design	December 2013	February 2014
Design Development	March 2014	June 2014
Use Permit process	April 2014	June 2014
Construction Documents	July 2014	November 2014
Construction Permit	October 2014	January 2015
Bidding	February 2015	April 2015
Phased Construction	March 2015	August 2016
Occupancy	September 2016	

Construction Process

- **Phased construction**
- Parking management and contractor access/delivery plan per **County Use Permit**
- Working hours in accordance with **County Noise Ordinance**
- **Advance notice** and coordination of utility outages and off-site construction
- **Dust control** measures
- **Perimeter security** fencing around construction zone and staging area

Questions?





PTA KICK OFF

**McKinley Elementary School
Renovation + Addition**

September 10, 2013

PRESENTATION OVERVIEW :

INTRO

Introductions
Hord Coplan
Macht overview

PROCESS

Schedule
Community
Engagement

OPPORTUNITIES

Learning Environment
Program / Ed Specs
Sustainability
Exterior / Site

WHO ARE YOU

Your School
Site Observations
Your Community

NEXT STEPS

... going forward

INTRODUCTIONS:



INTRODUCTIONS:



Peter

Jeff

Kevin

Mackenzie

Lisa

Jim

Julie

Om

We've dedicated our careers to improving learning environments.



WHO IS **hord** | **coplan** | **macht** :

hord | coplan | macht

Established in 1977

Offices in Alexandria & Baltimore

120 staff

studios:

education

healthcare

housing/mixed-use

landscape architecture













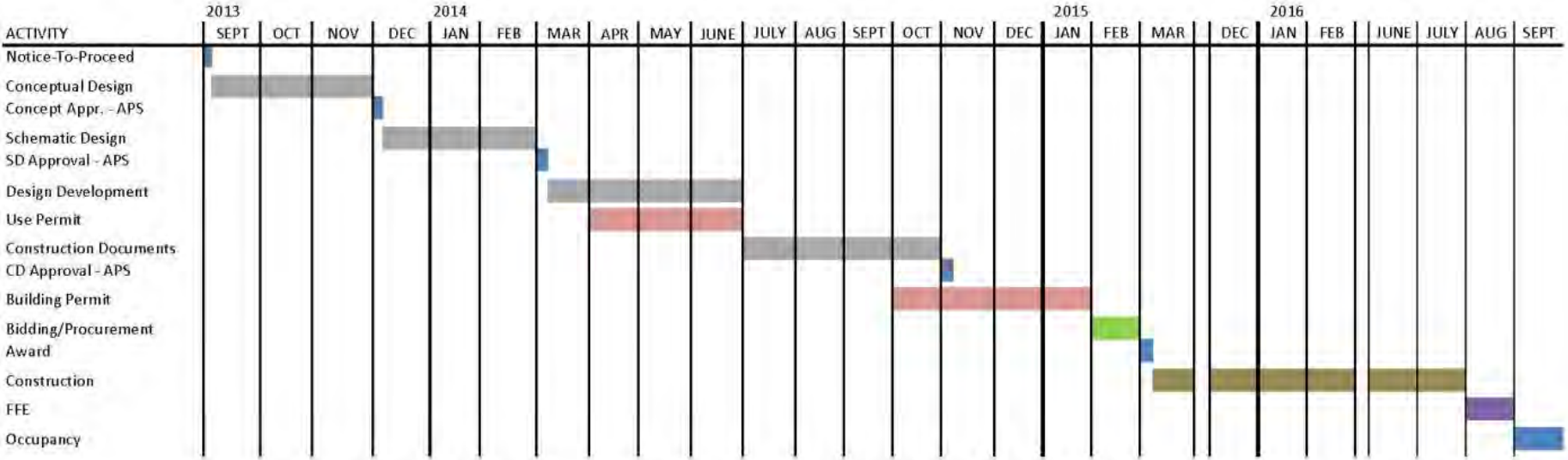


LEARNING
STUDIO

PROCESS:



SCHEDULE :



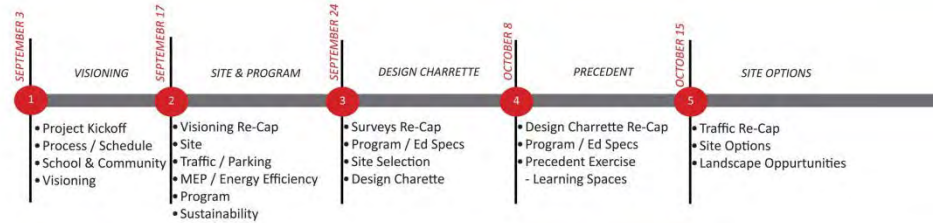
PROJECT MILESTONES:

- **Concept Design** – December 3, 2013
- **Schematic Design** – March 4, 2014
- **Design Development** – June 30, 2014
- **Use Permit** – June 30, 2014
- **Construction Documents** – November 30, 2014

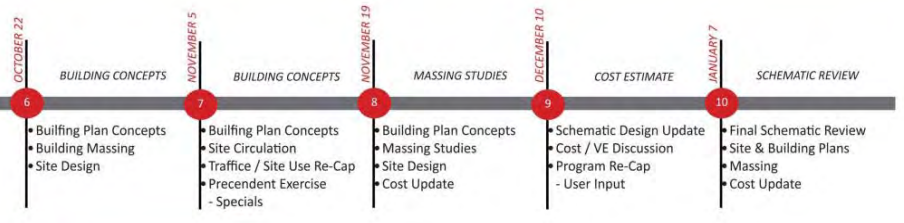
- **Building Permit** – January 30, 2015
- **Bidding** – March 4, 2015
- **Construction** – July 2016
- **Occupancy** – September 2016

PROJECT PROCESS

DEFINE



DESIGN



SS - Sustainable Sites
24 Total Credits

Code	Requirement	Points	Prerequisite	Notes
SS-1	Environmental Site Assessment	1	None	Phase 1/Phase II/Phase III
SS-2	Site Selection	1	None	Phase 1/Phase II/Phase III
SS-3	Site Selection	1	None	Phase 1/Phase II/Phase III
SS-4	Site Selection	1	None	Phase 1/Phase II/Phase III
SS-5	Site Selection	1	None	Phase 1/Phase II/Phase III
SS-6	Site Selection	1	None	Phase 1/Phase II/Phase III
SS-7	Site Selection	1	None	Phase 1/Phase II/Phase III
SS-8	Site Selection	1	None	Phase 1/Phase II/Phase III
SS-9	Site Selection	1	None	Phase 1/Phase II/Phase III
SS-10	Site Selection	1	None	Phase 1/Phase II/Phase III
SS-11	Site Selection	1	None	Phase 1/Phase II/Phase III
SS-12	Site Selection	1	None	Phase 1/Phase II/Phase III
SS-13	Site Selection	1	None	Phase 1/Phase II/Phase III
SS-14	Site Selection	1	None	Phase 1/Phase II/Phase III
SS-15	Site Selection	1	None	Phase 1/Phase II/Phase III
SS-16	Site Selection	1	None	Phase 1/Phase II/Phase III
SS-17	Site Selection	1	None	Phase 1/Phase II/Phase III
SS-18	Site Selection	1	None	Phase 1/Phase II/Phase III
SS-19	Site Selection	1	None	Phase 1/Phase II/Phase III
SS-20	Site Selection	1	None	Phase 1/Phase II/Phase III
SS-21	Site Selection	1	None	Phase 1/Phase II/Phase III
SS-22	Site Selection	1	None	Phase 1/Phase II/Phase III
SS-23	Site Selection	1	None	Phase 1/Phase II/Phase III
SS-24	Site Selection	1	None	Phase 1/Phase II/Phase III



PROJECT PROCESS :

Community Engagement

ON-SITE DESIGN EXPERIENCE:



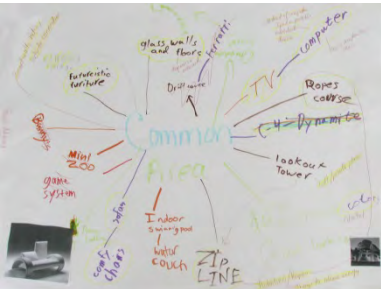
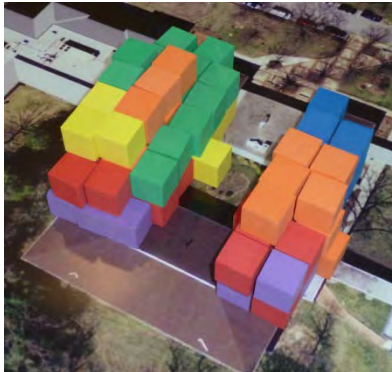
OPEN COMMENTARY:



Review of...
Building Materials
Scale of space
Color

... then publish to the community

STUDENT ENGAGEMENT:



FURNITURE WORKSHOP:



VISIONING - FICTITIOUS PRESS RELEASE:

SILVER SPRING, MD, JUNE 5, 2013- THE BARRIE SCHOOL WINS 2013 SHAW CONTRACT GROUP INTERIORS AWARD FOR THE NEW LEARNING STUDIO AND THE RESEARCH AND LEARNING LAB

The Barrie School Modular Learning Lab has been selected as a 2013 Winner of the Shaw Contract Group Design is Award. The Barrie School, Learning Studio & Research Lab, was selected based on how design is defined through the unique challenges, processes and results of the work presented. Market Award winners represent the highest caliber of work within an industry segment and/or geographic region and will be featured in the June NeoCon magazine, with the highest ranked in the Shaw Contract Group website and blog, and will also be promoted in their award media campaign.

On November 15th, 2012, the Barrie School, in Silver Springs Maryland, opened a brand new state of the art learning facility designed and delivered by Hord Coplan Macht/ Kramer Consulting Inc. and Modular Genius. Embracing a new paradigm in learning and educational delivery the school has begun a systemic process of improvement by engaging a number of capital improvements as part of their recent master plan and has recently brought on line two compact, high performing learning environments: the Learning Studio and the Research + Learning Lab.

In concert with the Barrie School's enduring commitment to sustainability, this new learning environment was designed to satisfy the requirements of LEED certification from the US Green Building Council. In short, this facility embraces nearly every definition of environmental stewardship, energy efficiency, increased eco-awareness, ergonomics and healthy interiors. As one Barrie student put it, "my new class room has a healthy conscious".

Built from many reclaimed materials, the building materials contain recycled post consumer products, rapidly renewable materials and uses Green Type FSC (Forest Stewardship Council) Lumber. Further promoting the safety and health of its end users in mind, students and faculty all play a low-VOC and non-toxic. Designed with its end users in mind, students and faculty all play a critical role in the buildings operation with thermal controls, operable windows and lighting controls as they collectively track and fine tune the buildings performance, a far cry from having thermostats under lock and key. Cisterns utilize rainwater to support moderate irrigation while supplementing non-potable water use for adjacent learning gardens. All of which is clearly tracked on the main dash board just inside the entry. Specific elements include White EPDM cool roof / reflective exterior doors and frames, HVAC controls, AC Smart room controllers, windows, insulated exterior doors and frames, a small garden and a small section of composting. Occupancy sensors, energy efficient lighting, a small garden and a small section of composting.

Barrie has committed itself to two continuous programs. Firstly it has established a rigorous annual sustainable operations and maintenance plan which ensures a clean and healthy interior environment. Secondly, Barrie has committed itself to the scrutiny of its peers by openly offering building tours to anyone interested in understanding the intrinsic integration of a hi performance learning facility. For an exciting opportunity to learn more about this project, join us at the

hord coplan macht

SILVER SPRING, MD, JUNE 5, 2013- THE BARRIE SCHOOL WINS 2013 SHAW CONTRACT GROUP INTERIORS AWARD FOR THE NEW LEARNING STUDIO AND THE RESEARCH AND LEARNING LAB

The Barrie School Modular Learning Lab has been selected as a 2013 Winner of the Shaw Contract Group Design is Award. The Barrie School, Learning Studio & Research Lab, was selected based on how design is defined through the unique challenges, processes and results of the work presented. Market Award winners represent the highest caliber of work within an industry segment and/or geographic region and will be featured in the June NeoCon magazine, with the highest ranked in the Shaw Contract Group website and blog, and will also be promoted in their award media campaign.

On November 15th, 2012, the Barrie School, in Silver Springs Maryland, opened a brand new state of the art learning facility designed and delivered by Hord Coplan Macht/ Kramer Consulting Inc. and Modular Genius. Embracing a new paradigm in learning and educational delivery the school has begun a systemic process of improvement by engaging a number of capital improvements as part of their recent master plan and has recently brought on line two compact, high performing learning environments: the Learning Studio and the Research + Learning Lab.

In concert with the Barrie School's enduring commitment to sustainability, this new learning environment was designed to satisfy the requirements of LEED certification from the US Green Building Council. In short, this facility embraces nearly every definition of environmental stewardship, energy efficiency, increased eco-awareness, ergonomics and healthy interiors. As one Barrie student put it, "my new class room has a healthy conscious".

Built from many reclaimed materials, the building materials contain recycled post consumer products, rapidly renewable materials and uses Green Type FSC (Forest Stewardship Council) Lumber. Further promoting the safety and health of its end users in mind, students and faculty all play a low-VOC and non-toxic. Designed with its end users in mind, students and faculty all play a critical role in the buildings operation with thermal controls, operable windows and lighting controls as they collectively track and fine tune the buildings performance, a far cry from having thermostats under lock and key. Cisterns utilize rainwater to support moderate irrigation while supplementing non-potable water use for adjacent learning gardens. All of which is clearly tracked on the main dash board just inside the entry. Specific elements include White EPDM cool roof / reflective exterior doors and frames, HVAC controls, AC Smart room controllers, windows, insulated exterior doors and frames, a small garden and a small section of composting. Occupancy sensors, energy efficient lighting, a small garden and a small section of composting.

Barrie has committed itself to two continuous programs. Firstly it has established a rigorous annual sustainable operations and maintenance plan which ensures a clean and healthy interior environment. Secondly, Barrie has committed itself to the scrutiny of its peers by openly offering building tours to anyone interested in understanding the intrinsic integration of a hi performance learning facility. For an exciting opportunity to learn more about this project, join us at the

hord coplan macht

SHARED EXPECTATIONS

- FSC Certified wood
- Cistern Rainwater
- Reclaimed materials
- Learning Gardens
- Daylight
- Eco-awareness



the chance to connect with the end -user...!



1946



2012

where do you do your **best learning**?









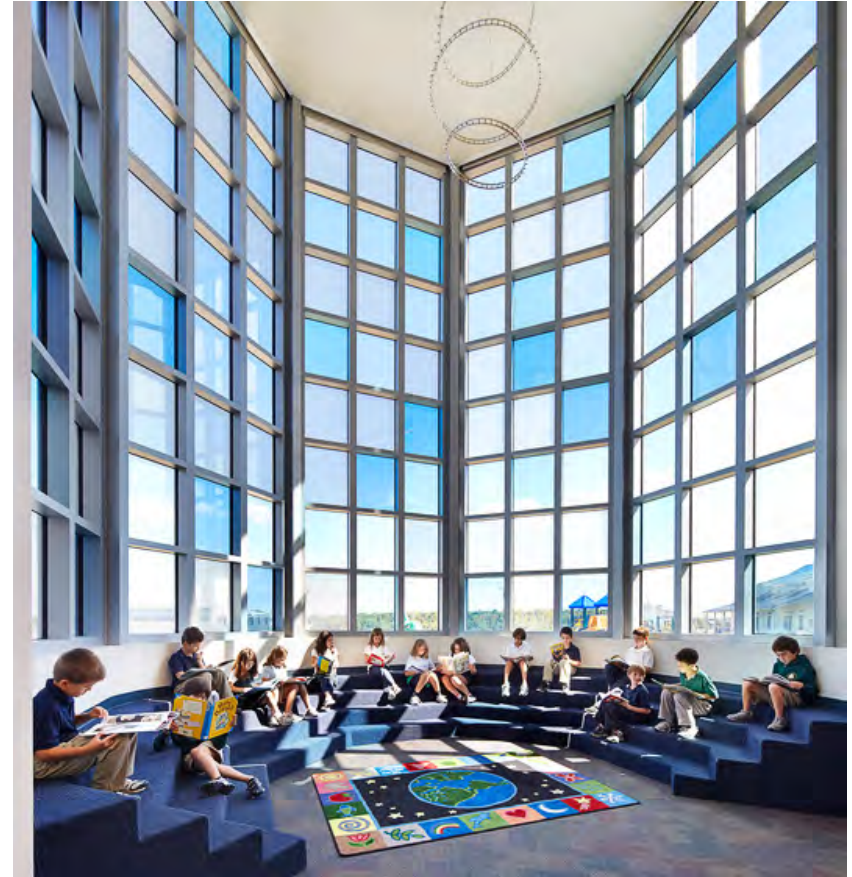
A photograph of a wooden pergola structure in a garden. The pergola has a series of horizontal beams supported by vertical posts. The background is filled with lush green trees and foliage. The word "Opportunities" is written in a large, bold, orange font across the center of the image.

Opportunities

LEARNING ACTIVITIES - LEARNING ENVIRONMENTS :



Active Learning



Reflective Learning

LEARNING ACTIVITIES - LEARNING ENVIRONMENTS :



Social Learning

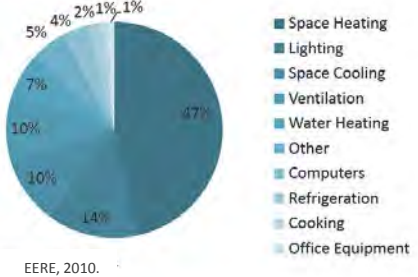
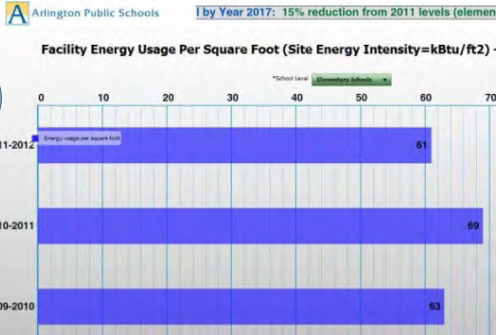


Creative Learning

SUSTAINABILITY : Site, Water, Energy, Building, Materials, People

...making sustainability relevant to student learning

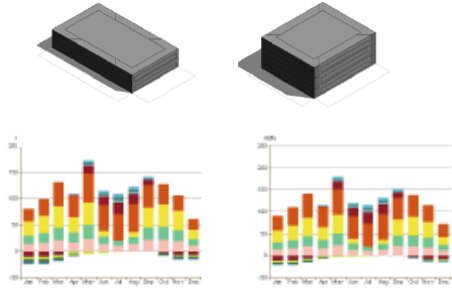
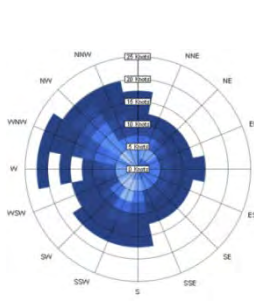
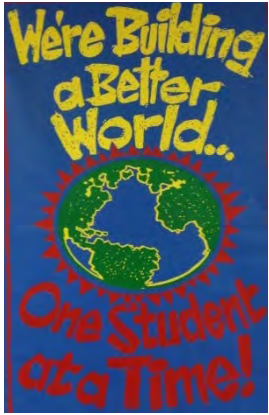
59



Site

"Heat Island Effect" Reduction
 86% of this building's roof area is reflective or vegetated which helps to reduce the "heat island effect" or the higher temperatures experienced in urban areas.

Fact
 In urban areas, the average air temperature can range up to **22 degrees hotter** than the surrounding rural areas. These warmer temperatures cause increased emissions and pollution through higher demand for summertime cooling.



OUTDOOR LEARNING :



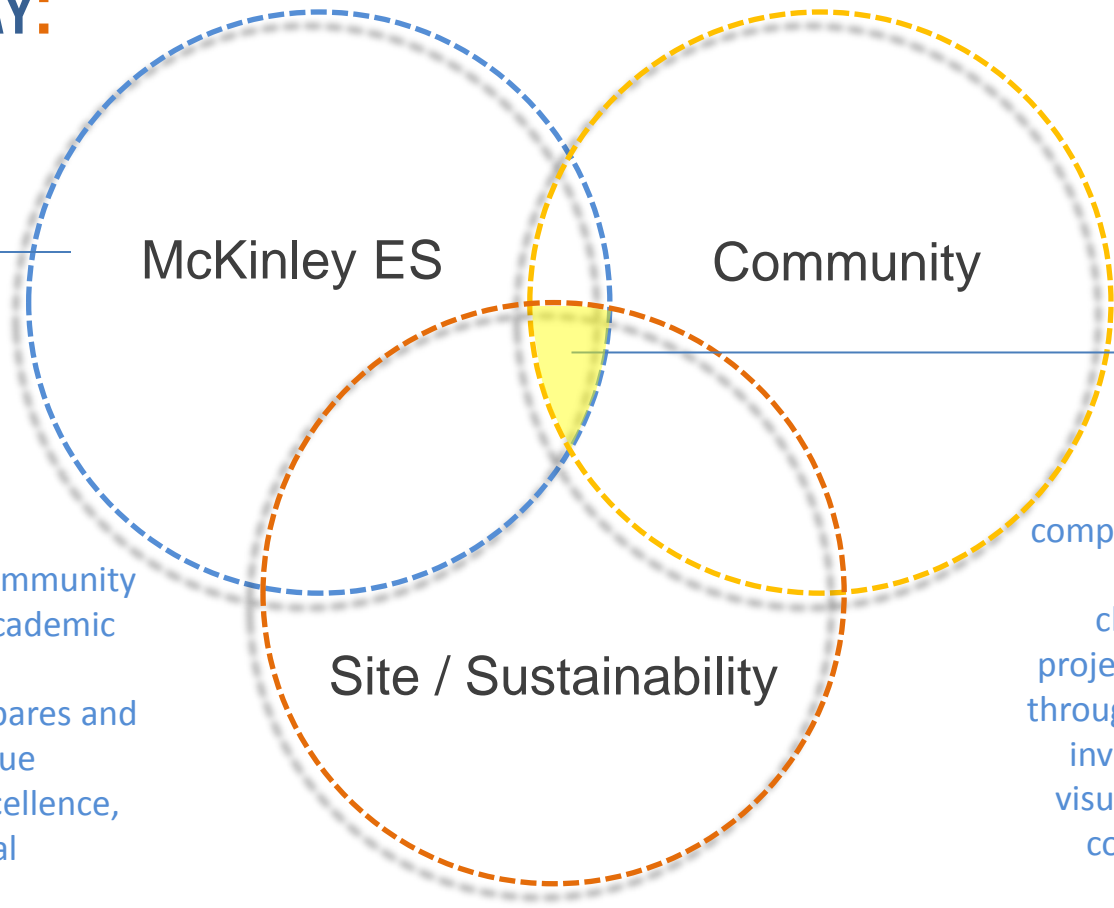


McKINLEY ES

+

COMMUNITY

THE McKinley WAY:



Mission Statement:

“The McKinley School community provides a challenging academic and nurturing learning environment, which prepares and inspires students to pursue knowledge, strive for excellence, and contribute to a global society”.



The Kaleidoscope Project, comprehensively integrates the arts into all programs and classrooms. The goal of the project is to reach each learner through engaging activities that involve music, dance, drama, visual arts, and theater arts in conjunction with traditional teaching strategies

McKinley
ELEMENTARY SCHOOL
Where Learning is an Art

Colin Brown, Principal
1030 N. McKinley Road
Arlington, VA 22205
703-228-5280
Fax: 703-538-4982

Tuesday, August 27, 2013

 Emergency Alerts  School Talk  Blackboard

[Home](#) [About Us](#) [Classrooms](#) [Curriculum](#) [Library](#) [Memories](#) [Parents](#) [Staff](#) [Students](#) [Teachers](#) [Web Links](#) [Calendar](#)

Contents

- > Overview
- > The Gallery

McKinley's Exemplary Project

kaleidoscope

Where Learning is an Art

<!--[if !ppt]--><!--[endif]-->
McKinley's exemplary project, The Kaleidoscope Project, comprehensively integrates the arts into all programs and classrooms. The goal of the project is to reach each learner through engaging activities that involve music, dance, drama, visual arts, and theater arts in conjunction with traditional teaching strategies. Through this arts integrated approach, we provide a rich school experience that develops critical and creative thinking, encourages problem-solving, provides feedback and opportunities for reflection, and sets the stage for academic achievement.

Last Modified on August 17, 2012

McKinley Elementary School
1030 N. McKinley Road
Arlington, VA 22205

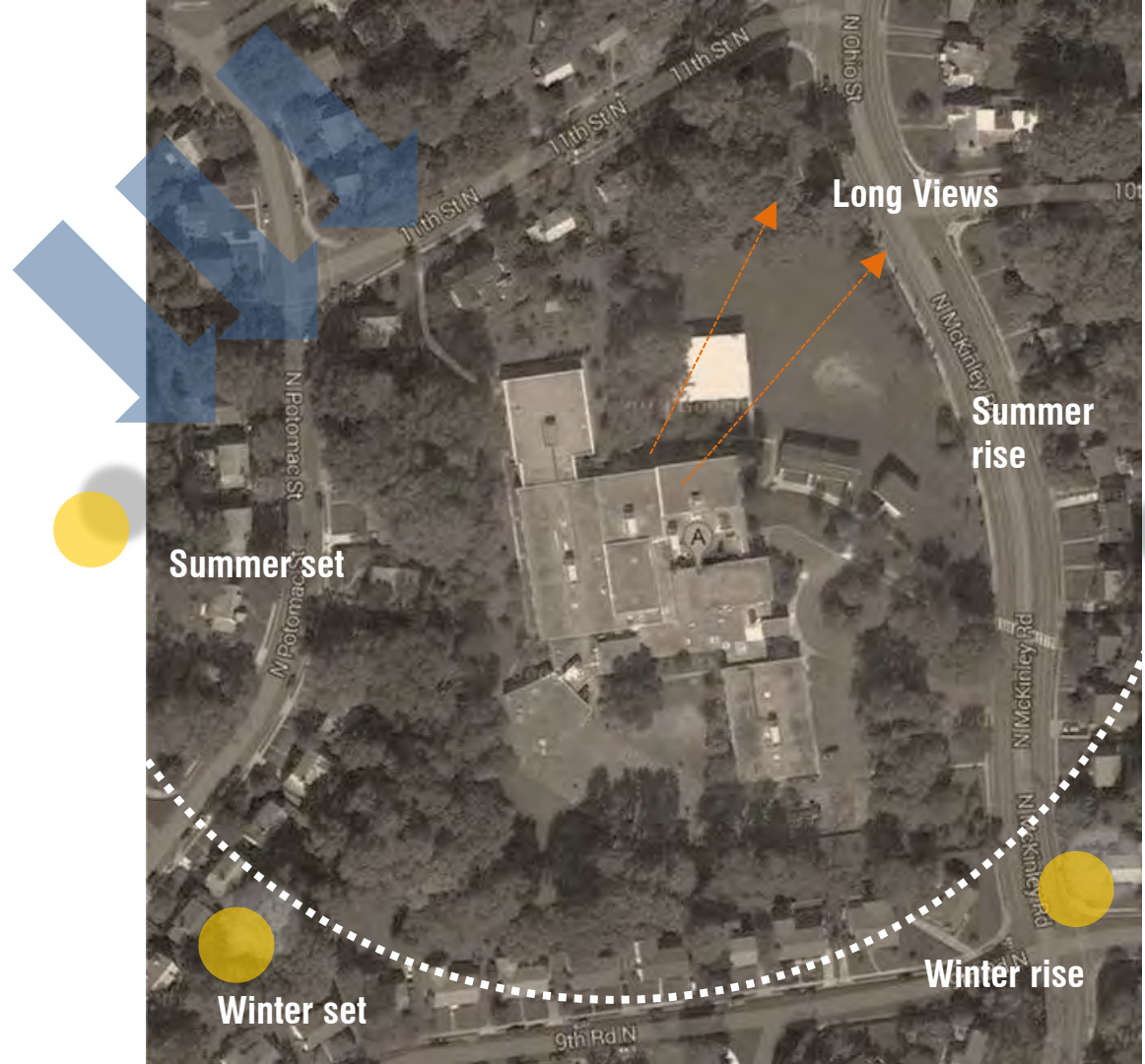
Colin Brown, Principal
703-228-5280
Fax: 703-538-4982

Webmaster@apsva.us
[Privacy Policy](#)
All Content © 2011 Arlington Public Schools

 Arlington Public Schools

Arlington Public Schools prohibits discrimination on the basis of race, religion, gender, sexual orientation, national origin, age, disability, pregnancy or marital status. This policy provides equal access to courses and programs, counseling services, physical education and athletics, vocational education, instructional materials and extra-curricular activities. Report violations of this policy to the Assistant Superintendent for Administrative Services, 703-228-6008, or the Assistant Superintendent for Personnel, 703-228-6110.

SITE OBSERVATIONS:



Solar Orientation
Prevailing Breeze
Long Views

SITE OBSERVATIONS:

Arrival:

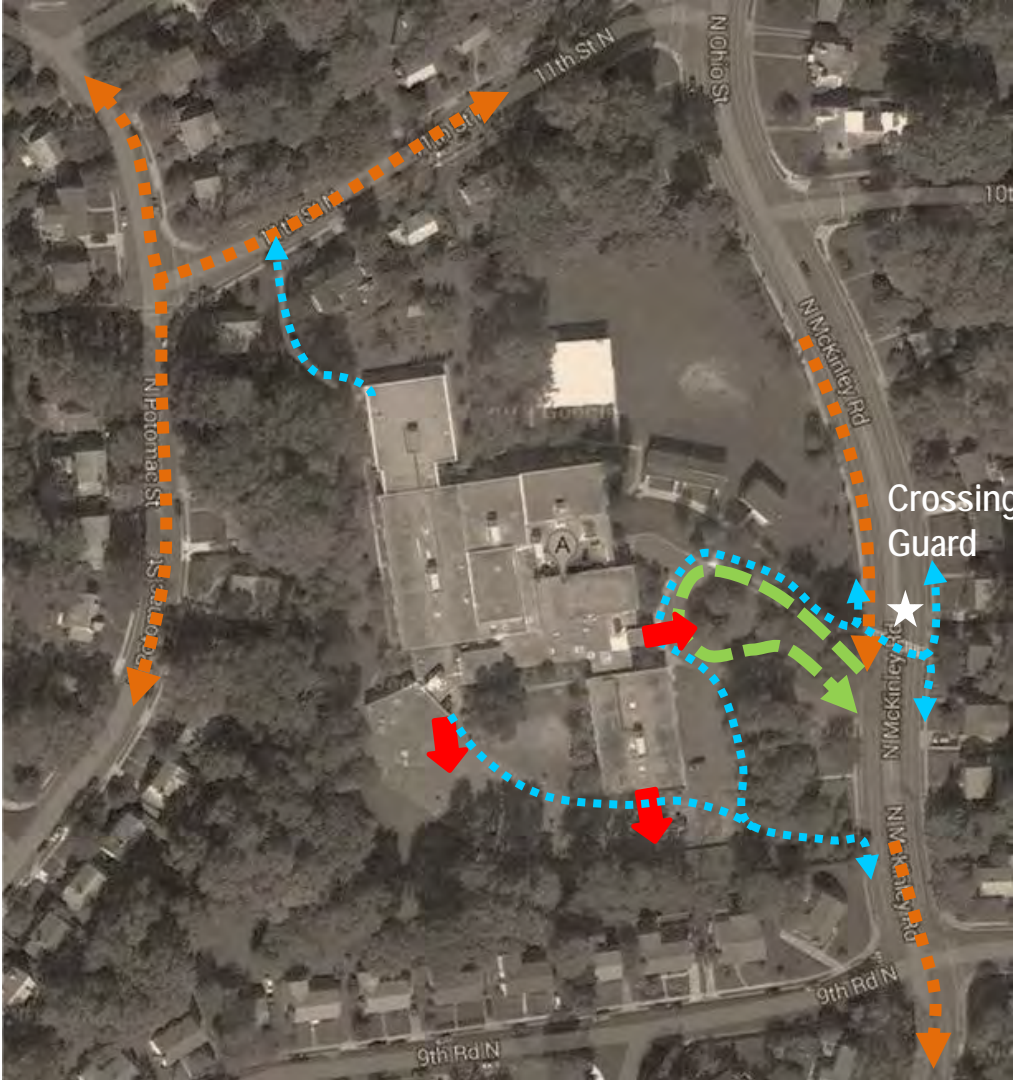
- Bus
- - - Vehicle
- ⋯ Pedestrian



SITE OBSERVATIONS:

Dismissal:

- Bus
- - - Vehicle
- ⋯ Pedestrian





McKinley Elementary School

Why Does McKinley Have a Rain Garden?

This sidewalk flooded almost every time it rained. A rain garden is a "sponge" solution, and provides multiple benefits:

- Water that soaks into the soil replenishes ground water and helps prevent flooding.
- Keeping stormwater out of the storm drain protects local Milk Run, the Potomac River and Chesapeake Bay from pollution, and from heavy storm flows that can erode stream banks.
- Soils and plants provide habitat for wildlife.
- A garden is a beautiful way to solve a drainage problem.

After a large storm the garden will be full of water, but will drain in less than 2 days.

Rain Garden Design



The Use of Native Plants



Native plants are adapted to the local climate and soil conditions. They require less water and fertilizer than non-native plants. They also provide habitat for local wildlife and insects.

Some native plants that are good for rain gardens include:

- Black-eyed Susan
- Butterfly Milkweed
- Coneflower
- Goldenrod
- Joe-Pye Weed
- Milkweed
- Purple Coneflower
- Red-top
- Wild Bergamot
- Yellow-flowered Anemone

Site / Sustainability

Arlington Community

YOU tell us!

...so, what are your

Greatest Hopes ?



*For the Learning Environments ?
For Outdoor Learning...?
For the Site...?*