

An abstract painting with vibrant colors including red, orange, yellow, green, blue, purple, and brown. The brushstrokes are thick and expressive, creating a textured, layered effect. The composition is non-representational, with various shapes and colors blending together.

ARLINGTON PUBLIC SCHOOLS
Ashlawn Elementary School

SHWGROUP 

BLPC and Community Meeting

11.21.13

PROJECT UPDATE

Agenda

1. Project Schedule

2. Final Project Scope - Site Work

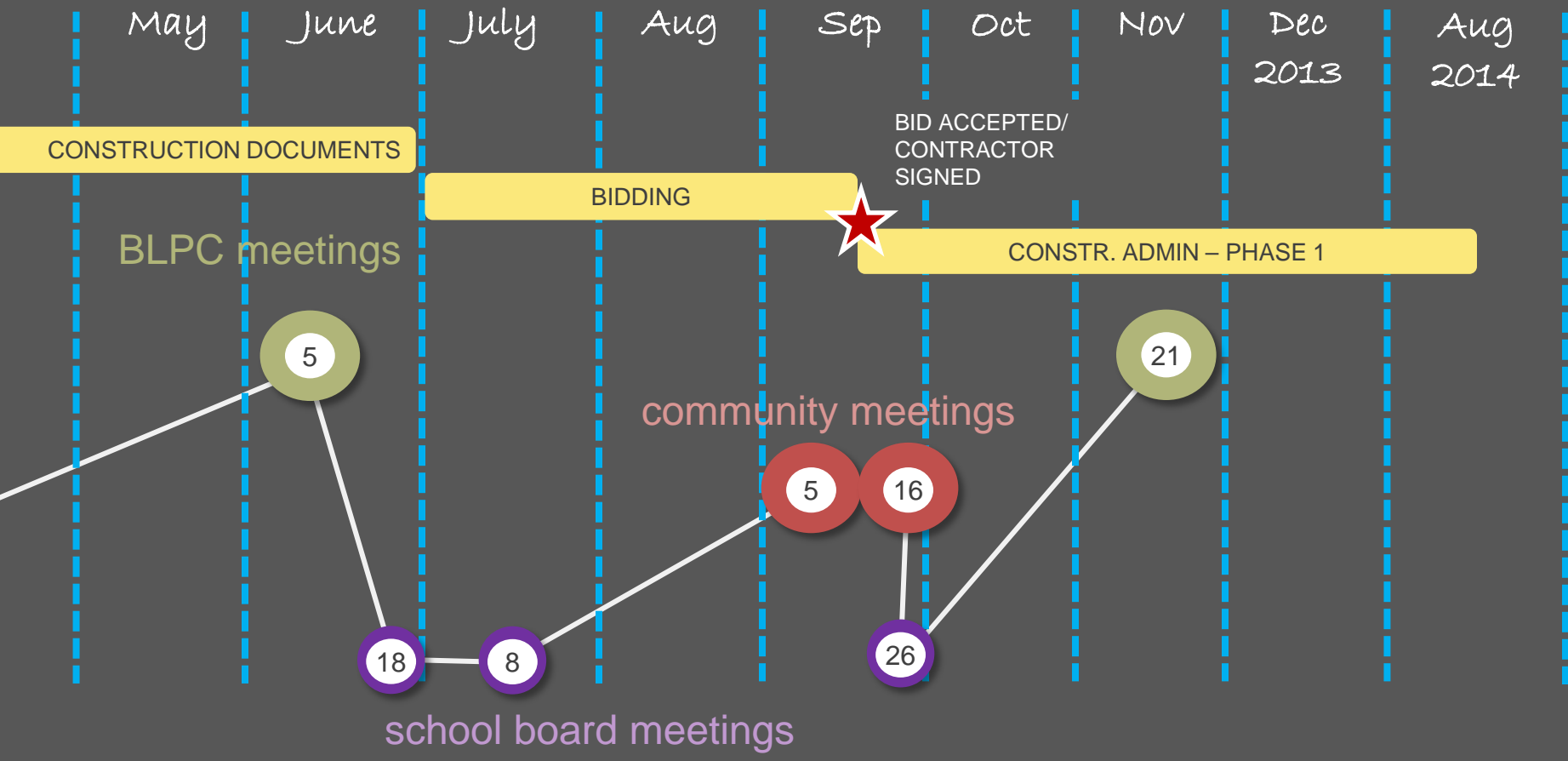
3. Final Project Scope - Building

3. Final Tree Preservation Plan

4. Construction Update

Project Schedule

project schedule



Final Project Scope
- Site Work



Reduced Site Work:

- Eliminate north side terrace construction –
keep bus loop – pending Wilson Blvd Connection
- Defer decisions on courtyard work until April 2014
- Minimize play area remediation
- Existing site sign to remain

new addition 8th road facade



view approaching new kiss and drop entrance

new addition classroom facade



view from practice fields

Main Entrance



Final Project Scope

- Building

floor plans



second floor plan



first floor plan

floor plan



third floor plan



Reduced Existing Building Work:

Minimize music suite and art suite modifications

Eliminate two hand wash stations

Reduce classroom renovation in Area B & C third floor

Eliminate mechanical screen above kitchen entrance

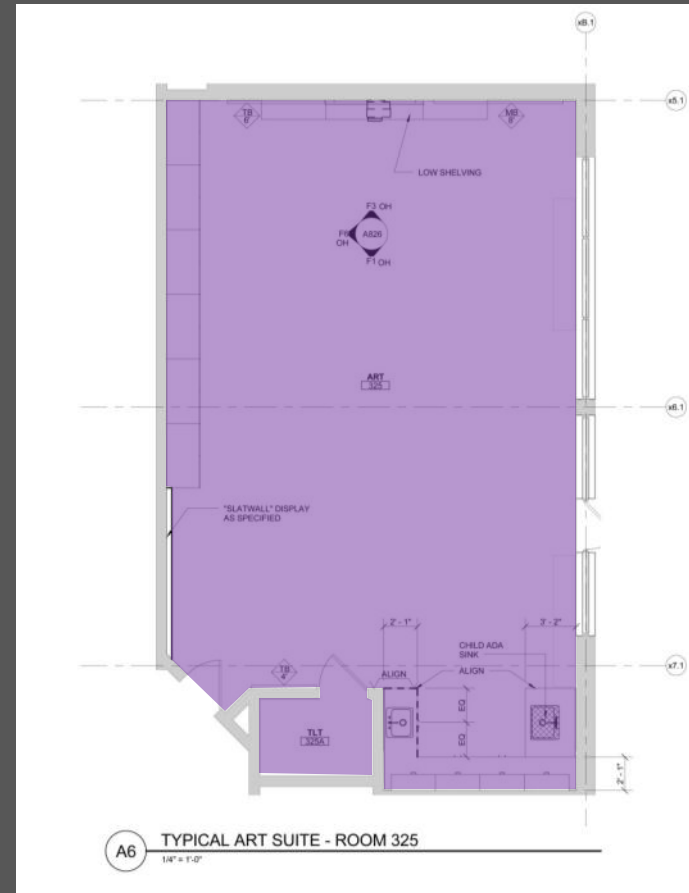
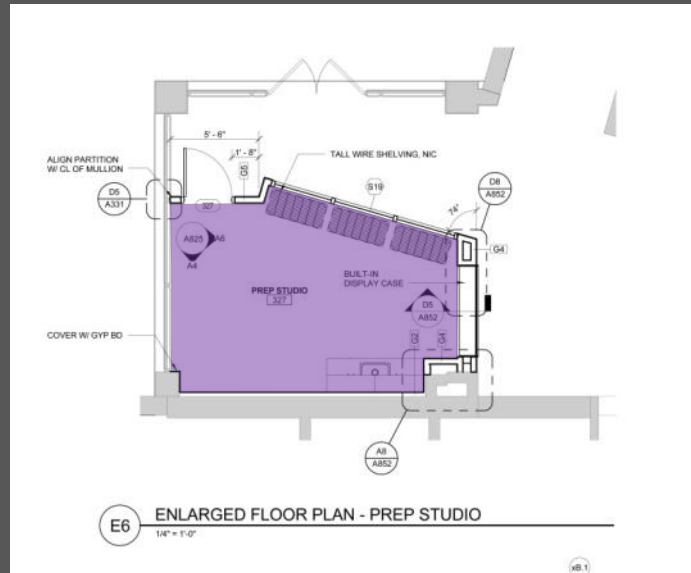
Substitute VCT for terrazzo flooring in multipurpose room

Eliminate ceiling work and simplify door at multipurpose room

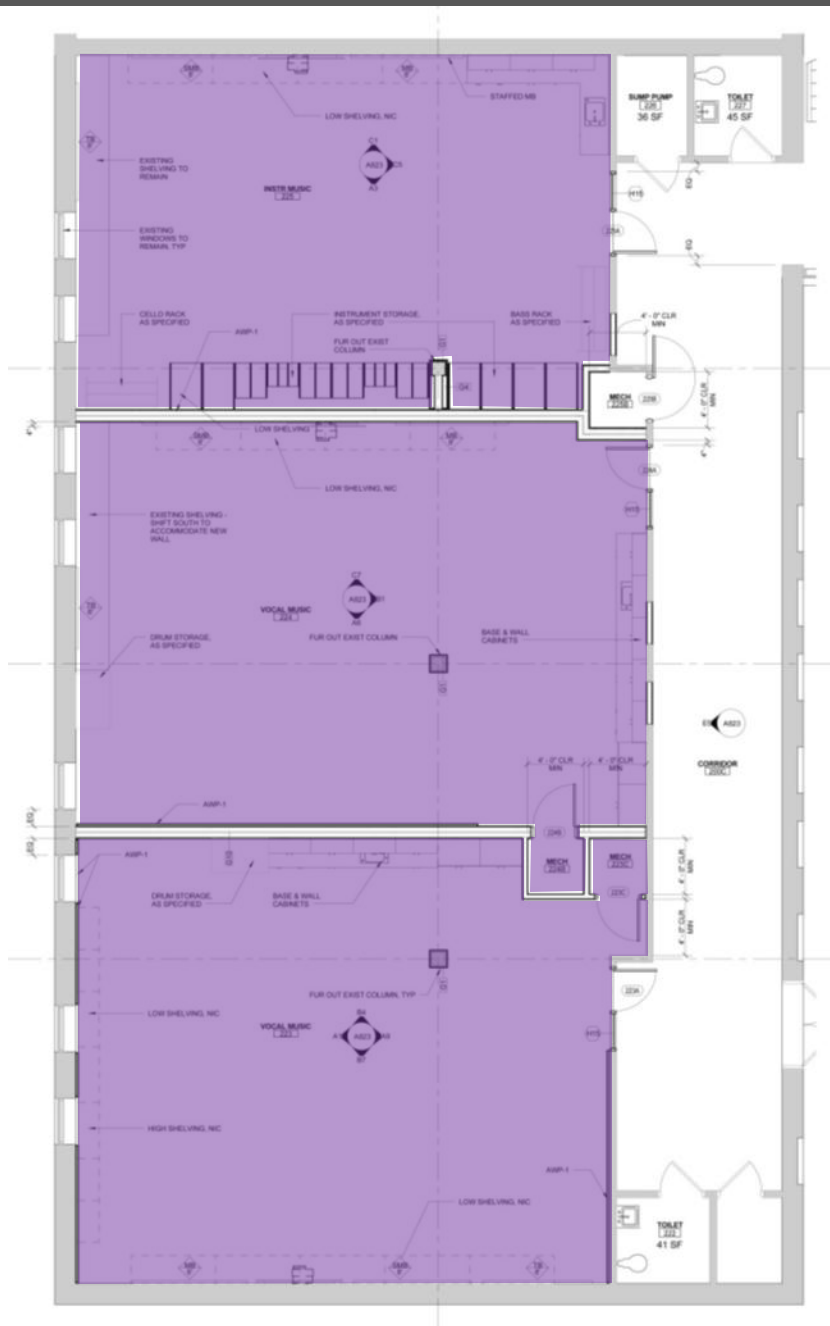
Eliminate benches/new windows at multipurpose room south wall

Change wood ceiling finish in lobby to gypsum

art classrooms - final design



music classrooms - final design





Reduced New Addition Building Work:

Eliminate mechanical screen

Change terrazzo stair finish to rubber

Change terrazzo flooring in corridors to VCT

Change knowledge nooks from wood clad to painted gypsum

Modify media center ceiling panel size

Alternate No. 1:

Provide painted gypsum board wall and soffit finish in lieu of natural finish wood paneling at the knowledge nooks.

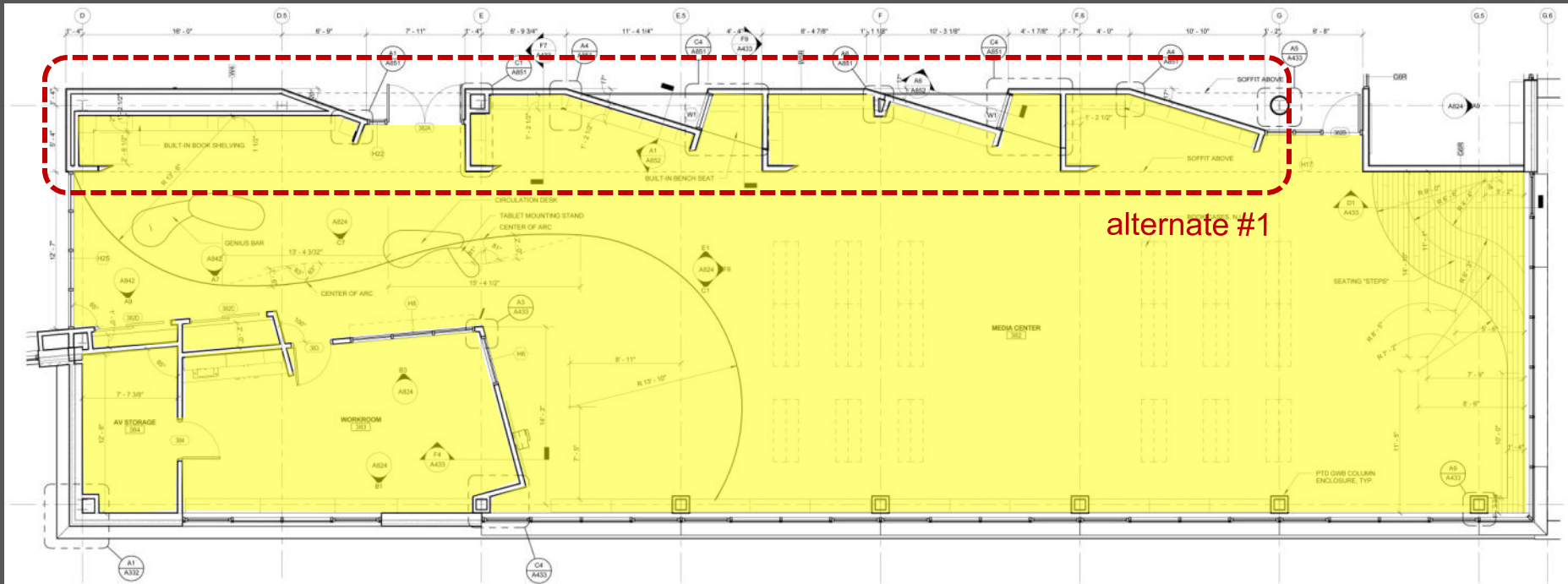
Alternate No. 2:

Eliminate three new finished openings in the south exterior masonry wall of the multipurpose room

Alternate No. 3 – TOP PRIORITY

Eliminate full interior renovations as indicated to Classrooms 338, 339, and 340 (Area C - Third Floor).

media center- final design



E1 ENLARGED THIRD FLOOR - MEDIA CENTER
1/8" = 1'-0"

media center - knowledge nooks



multi-purpose room - final design

NEW PTD STL COLUMNS TO SUPPORT DUNNAGE ABOVE - SEE STRUCT DRWGS

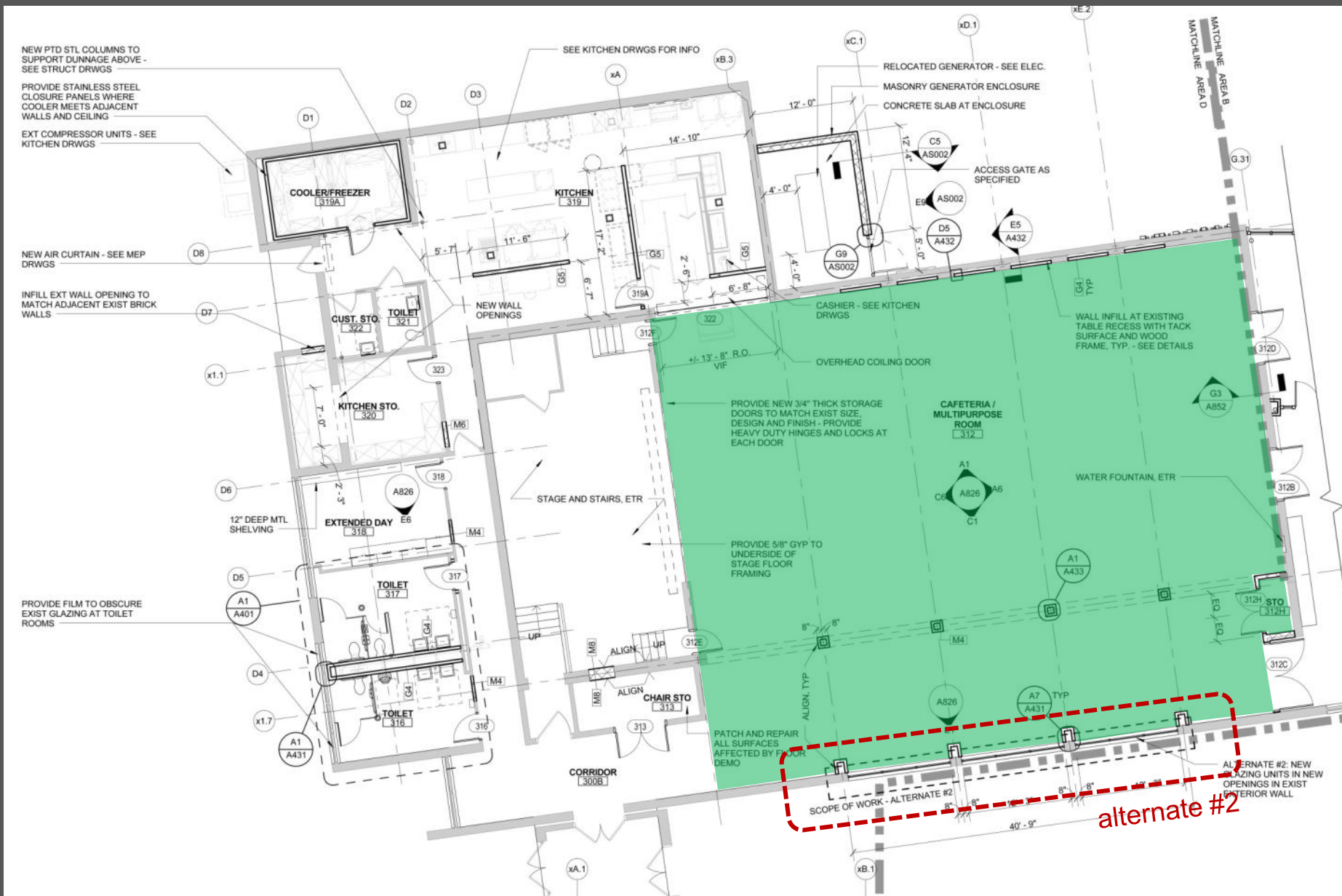
PROVIDE STAINLESS STEEL CLOSURE PANELS WHERE COOLER MEETS ADJACENT WALLS AND CEILING

EXT COMPRESSOR UNITS - SEE KITCHEN DRWGS

NEW AIR CURTAIN - SEE MEP DRWGS

INFILL EXT WALL OPENING TO MATCH ADJACENT EXIST BRICK WALLS

PROVIDE FILM TO OBSCURE EXIST GLAZING AT TOILET ROOMS

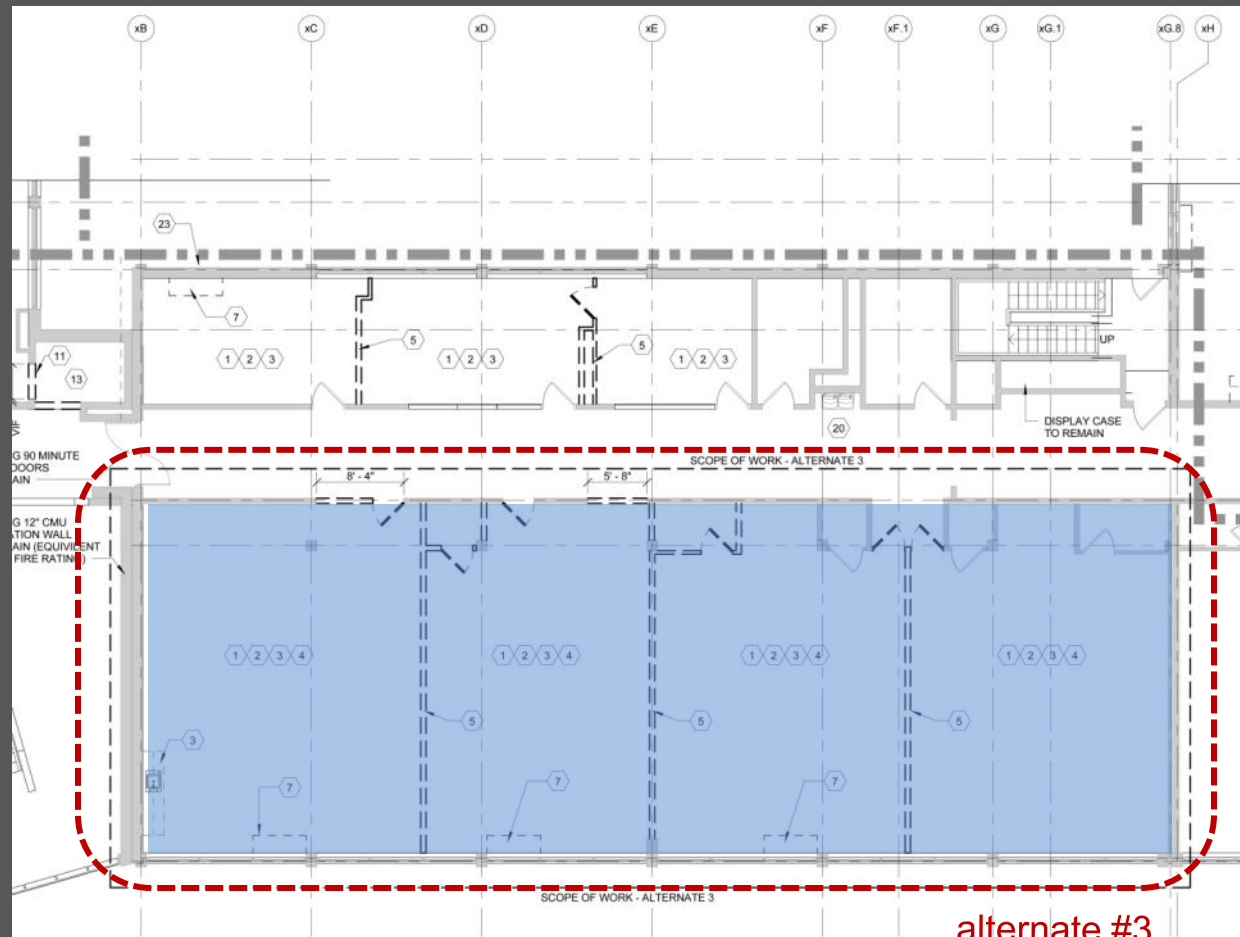


SCOPE OF WORK - ALTERNATE #2

ALTERNATE #2: NEW GLAZING UNITS IN NEW OPENINGS IN EXIST EXTERIOR WALL

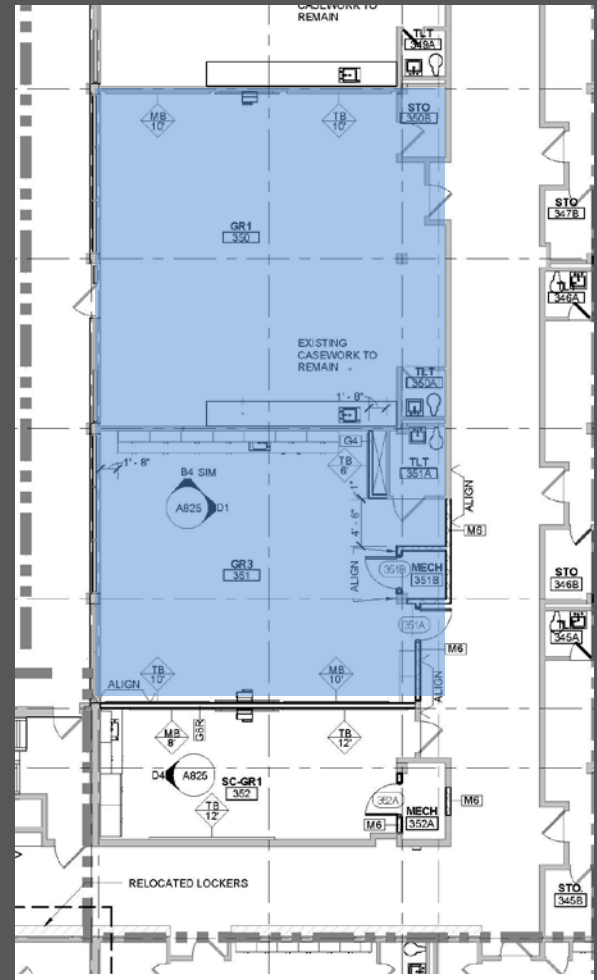
alternate #2

3rd floor classrooms - final design



alternate #3

A1 3RD FLOOR DEMO PLAN - AREA C
1/8" = 1'-0"



A1 THIRD FLOOR PLAN - AREA B
1/8" = 1'-0"



Final Tree Preservation Plan



Initial Use Permit Submission

03.11.13

USE PERMIT: Initial Submission

04.08.13

PROJECT MILESTONE: DESIGN DEVELOPMENT SUBMISSION





Subsequent Dates

- 03.11.13 USE PERMIT: Initial Submission
- 04.08.13 PROJECT MILESTONE: DESIGN DEVELOPMENT SUBMISSION
- 04.17.13 PFRC Meeting
- 05.18.13 County Board Meeting:
FINAL Use Conditions Approved (arborist required)
- 06.05.13 BLPC Meeting
Traffic Update + Safety
- 06.05.13 Arborist on-board
- 06.17.13 PROJECT MILESTONE: PERMIT SET SUBMISSION
- 06.17.13 Revised Tree Preservation Drawings submitted for *ISD and DES* review
- 07.15.13 Revised Tree Preservation Drawings submitted for *Use Permit* review
- 08.26.13 PROJECT MILESTONE: FINAL USE PERMIT SUBMISSION
- 09.25.13 Use Permit Post-Filing Set *Approved*



Partial Tree Protection Action Key (arborist)

Tree #	DBH <small>(Diameter at 4.5 feet above grade)</small>	Common Name	Botanical Name	Condition Rating %	Condition Rating	SCRZ <small>Structural Critical Root Zone (radius) in Feet</small>	CRZ <small>Critical Root Zone Radius in Ft (1.5 ft radius/in DBH)</small>	Removal	Recommended Preservation Measures													Comments	Additional Notes	Condition Notes			
									Removal By Arborist	Root Prune	Tree Protection Fence	Mulch	Soil Care	Soil Restoration/SSAT Aeration	Tree Growth Regulator	Tree Condition Inspections	Temp Root Protection Matt	Root Aeration Matting	Construction Overlap/Monitoring	SSAT Excavation for Utilities	Canopy Prune						
1	11	oak, pin	Quercus palustris	75	Good	6.0	17																	No disturbance.			
2	26	mulberry, white	Morus alba	63	Fair	10.0	39																	WITHIN RPA	4' OFF SITE.	Full Crown,	
3	30	maple, sugar	Acer saccharum	50	Fair	10.0	45	X																LEAVE 18" STUMP WITH FLAT TOP FOR SEATING	SURFACE ROOTS	Full Crown, One Sided, Broken Limbs,	
4	32	tuliptree	Liriodendron tulipifera	50	Fair	10.0	48	X																WITHIN RPA		Narrow Crown, One Sided, Large DW (3"+),	
5	21	maple, red	Acer rubrum	50	Fair	9.0	32	X																WITHIN RPA		Narrow Crown, One Sided, Trunk Decay,	
6	8	maple, silver	Acer saccharinum	50	Fair	5.0	12	X																WITHIN RPA		Full Crown,	
7	36	tuliptree	Liriodendron tulipifera	75	Good	10.0	54		x	x	x	x												WITHIN RPA		Full Crown,	
8	15	maple, silver	Acer saccharinum	75	Good	8.0	23		x	x		x												WITHIN RPA		Narrow Crown,	
9	36, 39	tuliptree	Liriodendron tulipifera	25	Critical	12.0	74																	WITHIN RPA	HOLLOW, Recommend removal due to condition	Full Crown, Trunk Decay, Included Bark,	
10	13, 18	locust, black	Robinia pseudoacacia	44	Poor	9.0	31																	WITHIN RPA	LEAN, Recommend removal due to condition	Narrow Crown,	
11	12, 20	maple, red	Acer rubrum	44	Poor	9.0	32																	WITHIN RPA	SURFACE ROOTS	Full Crown, Included Bark,	
12	26	maple, silver	Acer saccharinum	50	Fair	10.0	39	X																WITHIN RPA			
13	21	maple, red	Acer rubrum	25	Critical	9.0	32																	WITHIN RPA			
14	38	tuliptree	Liriodendron tulipifera	75	Good	11.0	57	X																WITHIN RPA			
15	4	maple, sugar	Acer saccharum	50	Fair	3.0	6	x																			
16	3	maple, sugar	Acer saccharum	50	Fair	2.0	5	x																			Full Crown,



Tree Replacement Calculations (arborist)



TREE REPLACEMENT CALCULATIONS

Date: JULY 2013 Tree Replacement Calculations Project: ASHLAWN ELEMENTARY

Tree #	DBH (inches)	Species	To Be Removed (Y/N)	Condition	Species Rating	Total Score	Replacements Required
1	11	Quercus palustris	No	75%	65%	5.38	0
2	26	Morus alba	No	63%	45%	7.31	0
3	30	Acer saccharum	Yes	50%	75%	11.25	3
4	32	Liriodendron tulipifera	Yes	50%	70%	11.20	3
5	21	Acer rubrum	Yes	50%	70%	7.35	2
6	8	Acer saccharum	Yes	50%	45%	1.80	1
7	36	Liriodendron tulipifera	No	75%	70%	18.90	0
8	15	Acer saccharum	No	75%	45%	5.06	0
9	75	Liriodendron tulipifera	No	25%	70%	13.13	0
10	31	Robinia pseudoacacia	No	44%	55%	7.46	0
11	32	Acer rubrum	No	44%	70%	9.80	0
12	26	Acer saccharum	Yes	50%	45%	5.85	2
13	21	Acer rubrum	No	25%	70%	3.68	0
14	38	Liriodendron tulipifera	Yes	75%	70%	19.95	4
15	4	Acer saccharum	Yes	50%	75%	1.50	1
16	3	Acer saccharum	Yes	50%	75%	1.13	1
17	5	Prunus serotina	Yes	50%	55%	1.38	1
18	8	Juglans nigra	Yes	75%	68%	4.05	1
19	3	Cornus canadensis	Yes	50%	73%	1.09	1
20	15	Liriodendron tulipifera	Yes	53%	70%	5.58	2
21	20	Juglans nigra	Yes	75%	68%	10.13	3
22	10	Celtis occidentalis	Yes	50%	63%	3.13	1
23	10	Liriodendron tulipifera	Yes	75%	70%	5.25	1
24	4	Acer saccharum	Yes	50%	75%	1.50	1
25	4	Juglans nigra	Yes	50%	68%	1.35	1
26	3	X Cupressocyparis leylandii	Yes	75%	60%	1.35	1
27	4	X Cupressocyparis leylandii	Yes	75%	60%	1.80	1
28	4	Ilex opaca	Yes	50%	75%	1.45	1
29	40	Liriodendron tulipifera	No	75%	70%	21.00	0
30	20	Liriodendron tulipifera	Yes	0%	70%	0.00	0
31	32	Acer rubrum	Yes	69%	70%	15.40	4
32	21	Liriodendron tulipifera	No	38%	70%	5.51	0
33	19	Acer saccharum	No	75%	75%	10.69	0
34	50	Acer saccharum	No	66%	45%	14.77	0
35	4	Cornus florida	No	50%	60%	1.20	0
36	23	Acer saccharum	No	50%	75%	8.63	0
37	14	Quercus phellos	No	75%	75%	7.88	0
38	9	Quercus phellos	Yes	50%	75%	2.25	1
39	24	Quercus phellos	No	69%	75%	12.38	0
40	10	Acer rubrum	No	50%	70%	3.50	0
41	15	Acer saccharum	No	69%	75%	7.73	0
42	21	Acer saccharum	No	69%	75%	10.83	0
43	29	Acer saccharum	Yes	69%	75%	14.44	3
44	8	Fraxinus americana	Yes	50%	53%	2.10	1
45	6	Zelkova serrata	Yes	75%	80%	3.60	1
46	12	Zelkova serrata	No	69%	80%	6.60	0
47	27	Acer saccharum	No	75%	75%	15.19	0
48	25	Acer saccharum	No	75%	75%	14.06	0
49	10	Morus alba	No	50%	45%	2.25	0
50	20	Acer platanoides	No	75%	55%	8.25	0
51	24	Dead	Yes	0%	0%	0.00	0
52	24	Acer platanoides	No	75%	55%	9.90	0
53	24	Acer platanoides	No	75%	60%	9.90	0
54	28	Acer platanoides	Yes	50%	55%	7.70	0
55	22	Acer platanoides	Yes	50%	55%	6.05	2
56	16	Acer platanoides	Yes	50%	55%	4.40	1
57	18	Acer rubrum	Yes	75%	70%	9.45	2
58	14	Acer rubrum	Yes	38%	70%	3.68	1
59	12	Koeleruteria paniculata	Yes	75%	63%	5.63	2
60	4	Ulmus parvifolia	Yes	75%	80%	2.40	1
61	4	Ulmus parvifolia	Yes	75%	80%	2.40	1
62	3	Ilex spp.	Yes	50%	73%	1.09	1
63	16	Cedrus atlantica	Yes	75%	60%	7.20	2
64	3	Ilex spp.	Yes	50%	73%	1.09	1
65	3	Ulmus parvifolia	Yes	50%	80%	1.20	1
66	12	Milium spp.	No	75%	63%	5.63	0
67	8	Koeleruteria paniculata	Yes	50%	63%	2.60	1
68	10	Acer saccharum	No	75%	75%	5.63	0

Date: JULY 2013 Tree Replacement Calculations Project: ASHLAWN ELEMENTARY

Tree #	DBH (inches)	Species	To Be Removed (Y/N)	Condition	Species Rating	Total Score	Replacements Required
69	13	Acer saccharum	No	75%	75%	7.31	0
70	16	Acer saccharum	No	75%	75%	9.00	0
71	10	Quercus rubra	No	75%	75%	5.63	0
72	17	Quercus velutina	No	50%	75%	6.38	0
73	54	Quercus falcata	No	69%	70%	25.99	0
74	23	Robinia pseudoacacia	No	63%	55%	7.91	0
75	3	Prunus serotina	No	50%	55%	0.83	0
76	3	Prunus serotina	No	50%	55%	0.83	0
77	3	Prunus serotina	No	50%	55%	0.83	0
78	16	Prunus serotina	No	50%	55%	4.40	0
79	11	Acer saccharum	No	25%	75%	2.06	0
80	12	Prunus serotina	No	50%	55%	3.30	0
81	3	Robinia pseudoacacia	No	50%	55%	0.83	0
82	4	Robinia pseudoacacia	No	50%	55%	1.10	0
83	22	Acer platanoides	No	63%	55%	7.56	0
84	10	Hamamelis virginiana	No	44%	78%	3.39	0
85	25	Acer platanoides	No	75%	55%	10.31	0
86	6	Ilex x alternata-Fosteri	No	75%	73%	3.26	0
87	6	Cornus canadensis	No	75%	73%	3.26	0
88	36	Salix discolor	No	56%	60%	12.15	0
89	7	Morus alba	Yes	53%	45%	1.67	1
90	6	Prunus serotina	No	56%	55%	1.86	0
91	21	Acer platanoides	No	41%	55%	4.69	0
92	26	Acer saccharum	No	75%	75%	14.63	0
93	4	Robinia pseudoacacia	No	56%	55%	1.24	0
94	12	Quercus velutina	No	56%	75%	5.06	0
95	5	Quercus velutina	No	56%	75%	2.11	0
96	22	Quercus velutina	No	53%	75%	8.77	0
97	28	Quercus falcata	No	56%	75%	11.03	0
98	17	Acer saccharum	Yes	41%	75%	5.18	2
99	9	Cedrus deodara	Yes	75%	50%	3.38	1
100	4	Acer platanoides	Yes	75%	55%	1.65	1
101	4	Acer platanoides	Yes	50%	55%	1.10	1
102	4	Acer platanoides	Yes	75%	55%	1.65	1
103	5	Quercus phellos	Yes	75%	75%	2.81	1
104	5	Quercus phellos	Yes	75%	75%	2.81	1
105	5	Quercus phellos	Yes	75%	75%	2.81	1
106	5	Quercus phellos	Yes	75%	75%	2.81	1
107	5	Quercus phellos	Yes	75%	75%	2.81	1
108	4	Quercus phellos	Yes	69%	75%	2.06	1
109	6	Quercus phellos	Yes	75%	75%	3.38	1
110	4	Acer saccharum	Yes	0%	75%	0.00	1
111	3	Acer saccharum	Yes	75%	75%	1.69	1
112	7	Acer saccharum	Yes	72%	75%	3.77	1
113	4	Acer saccharum	Yes	75%	75%	2.25	1
114	3	Prunus serrulata	Yes	75%	55%	1.24	1
115	3	Dead	Yes	0%	0%	0.00	0
116	3	Prunus serrulata	Yes	75%	55%	1.24	1
117	7	Acer rubrum	Yes	75%	70%	3.68	1
118	12	Prunus serrulata	Yes	72%	55%	4.74	1
119	10	Prunus serrulata	Yes	75%	55%	4.13	1
120	12	Lagerstroemia indica	Yes	75%	78%	6.98	2
121	16	Lagerstroemia indica	Yes	75%	78%	9.30	2
122	25	Acer platanoides	Yes	63%	55%	8.59	2
123	4	Quercus rubra	Yes	75%	75%	2.25	1
124	3	Cornus florida	Yes	75%	60%	1.35	1
125	12	Viburnum spp.	Yes	75%	68%	6.12	2
126	26	Quercus velutina	Yes	75%	75%	10.97	3
127	11	Platanus x acerifolia	Yes	44%	65%	3.13	1
128	16	Ilex opaca	Yes	50%	73%	5.80	2
129	26	Quercus falcata	Yes	63%	70%	12.25	3
130	27	Quercus falcata	No	75%	70%	14.18	0
131	22	Quercus falcata	No	69%	70%	10.99	0
132	31	Acer saccharum	No	56%	45%	7.85	0
133	22	Acer saccharum	Yes	56%	45%	5.57	2
134	12	Ilex spp.	Yes	50%	73%	4.35	1
135	7	Ilex spp.	Yes	50%	73%	2.54	1
136	9	Prunus serotina	Yes	25%	55%	1.24	1

Date: JULY 2013 Tree Replacement Calculations Project: ASHLAWN ELEMENTARY

Tree #	DBH (inches)	Species	To Be Removed (Y/N)	Condition	Species Rating	Total Score	Replacements Required
137	22	Acer platanoides	Yes	38%	55%	4.54	1
138	12	Cornus florida	Yes	38%	60%	2.70	1
139	7	Cornus florida	Yes	63%	60%	2.63	1
140	6	Cornus florida	Yes	50%	60%	2.40	1
141	36	Acer latricum ginnala	Yes	31%	85%	9.00	2
142	45	Lagerstroemia indica	Yes	75%	78%	26.18	6
143	26	Prunus strobus	Yes	25%	55%	3.58	1
144	5	Thuja occidentalis	Yes	63%	60%	1.88	1
145	5	Thuja occidentalis	Yes	50%	60%	1.50	1
146	31	Thuja occidentalis	Yes	50%	60%	9.30	2
147	9	Prunus calleryana	Yes	50%	50%	2.25	1
148	9	Prunus calleryana	Yes	50%	50%	2.25	1
149	9	Prunus calleryana	Yes	50%	50%	2.25	1
150	20	Cornus florida	Yes	38%	60%	4.50	1
151	44	Lagerstroemia indica	No	75%	78%	25.58	0
152	19	Prunus strobus	Yes	38%	55%	3.92	1
153	8	Quercus coccinea	No	75%	73%	4.35	0
154	9	Ilex spp.	No	50%	73%	3.26	0
155	9	Prunus strobus	No	38%	55%	1.86	0
156	5	Juglans nigra	No	50%	68%	1.69	0
157	6	Prunus serotina	No	38%	55%	1.24	0
158	10	Prunus virginiana	No	38%	50%	1.88	0
159	18	Prunus strobus	Yes	0%	55%	0.00	0
160	11	Juglans nigra	No	41%	68%	3.02	0
161	5	Juglans nigra	No	31%	68%	1.05	0
162	15	Prunus virginiana	No	25%	50%	1.88	0
163	24	Prunus strobus	No	25%	55%	3.30	0
164	4	Robinia pseudoacacia	No	25%	55%	0.55	0
165	26	Prunus strobus	No	25%	55%	3.58	0
166	7	Robinia pseudoacacia	No	50%	55%	1.93	0
167	5	Tsuga canadensis	No	50%	60%	1.50	0
168	4	Robinia pseudoacacia	No	25%	55%	0.55	0
169	8	Ilex spp.	No	75%	73%	4.35	0

Note: Yellow Highlights indicate trees within the RPA. GRAND TOTAL: 127
Total to be planted in the RPA: 12





Tree Replacement Calculations (arborist)

Tree #	DBH (inches)	Species	To Be Removed (Y/N)	Condition	Species Rating	Total Score	Replacements Required
1	11	Quercus palustris	No	75%	65%	5.36	0
2	26	Morus alba	No	63%	45%	7.31	0
3	30	Acer saccharum	Yes	50%	75%	11.25	3
4	32	Liriodendron tulipifera	Yes	50%	70%	11.20	3
5	21	Acer rubrum	Yes	50%	70%	7.35	2
6	8	Acer saccharinum	Yes	50%	45%	1.80	1
7	36	Liriodendron tulipifera	No	75%	70%	18.90	0
8	15	Acer saccharinum	No	75%	45%	5.06	0
9	75	Liriodendron tulipifera	No	25%	70%	13.13	0
10	31	Robinia pseudoacacia	No	44%	55%	7.46	0
11	32	Acer rubrum	No	44%	70%	9.80	0
12	26	Acer saccharinum	Yes	50%	45%	5.85	2
13	21	Acer rubrum	No	25%	70%	3.68	0
14	38	Liriodendron tulipifera	Yes	75%	70%	19.95	4
15	4	Acer saccharum	Yes	50%	75%	1.50	1
16	3	Acer saccharum	Yes	50%	75%	1.13	1
17	5	Prunus serotina	Yes	50%	55%	1.38	1
18	8	Juglans nigra	Yes	75%	68%	4.05	1

Final Design (landscape architect)



Final Design (landscape architect)



tree schedule comparison



Tree Replacement

Description	qty
Tree Removal	92*
Tree Replacement Value	127
Actual Trees to be planted	219

*number includes dead trees, trees to be removed for bus loop infilling, trees removed for SWM

Construction Update



Construction during the next couple months:

- Continue mass excavation & backfill
- Install building foundation
- Install underground utilities
- Install slab on grade
- Start structural steel installation
- On site curb & gutter

phase 1 - construction photos



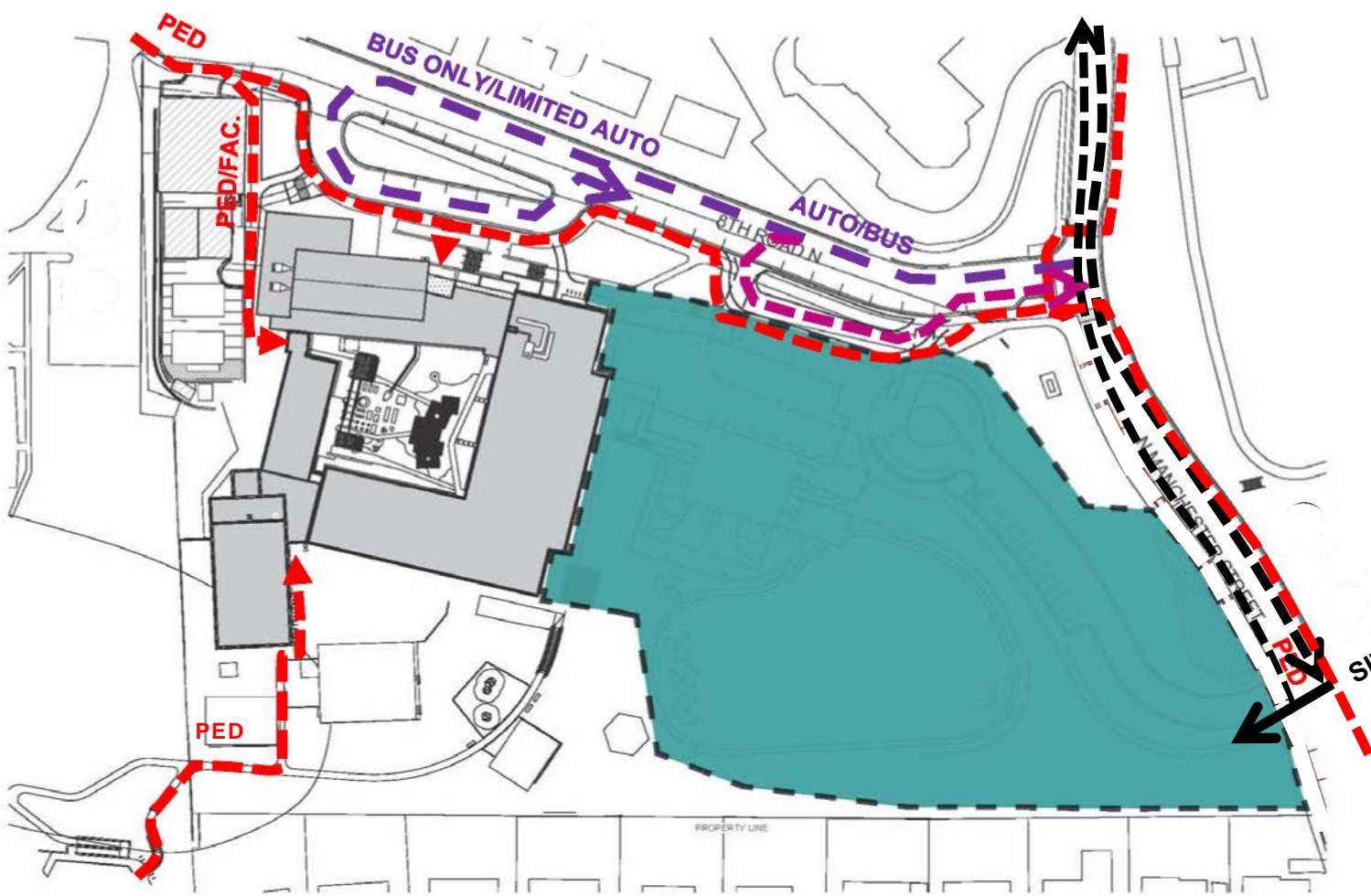
phase 1 - construction photos





phase 1: sep. 1, 2013 - aug. 15, 2014

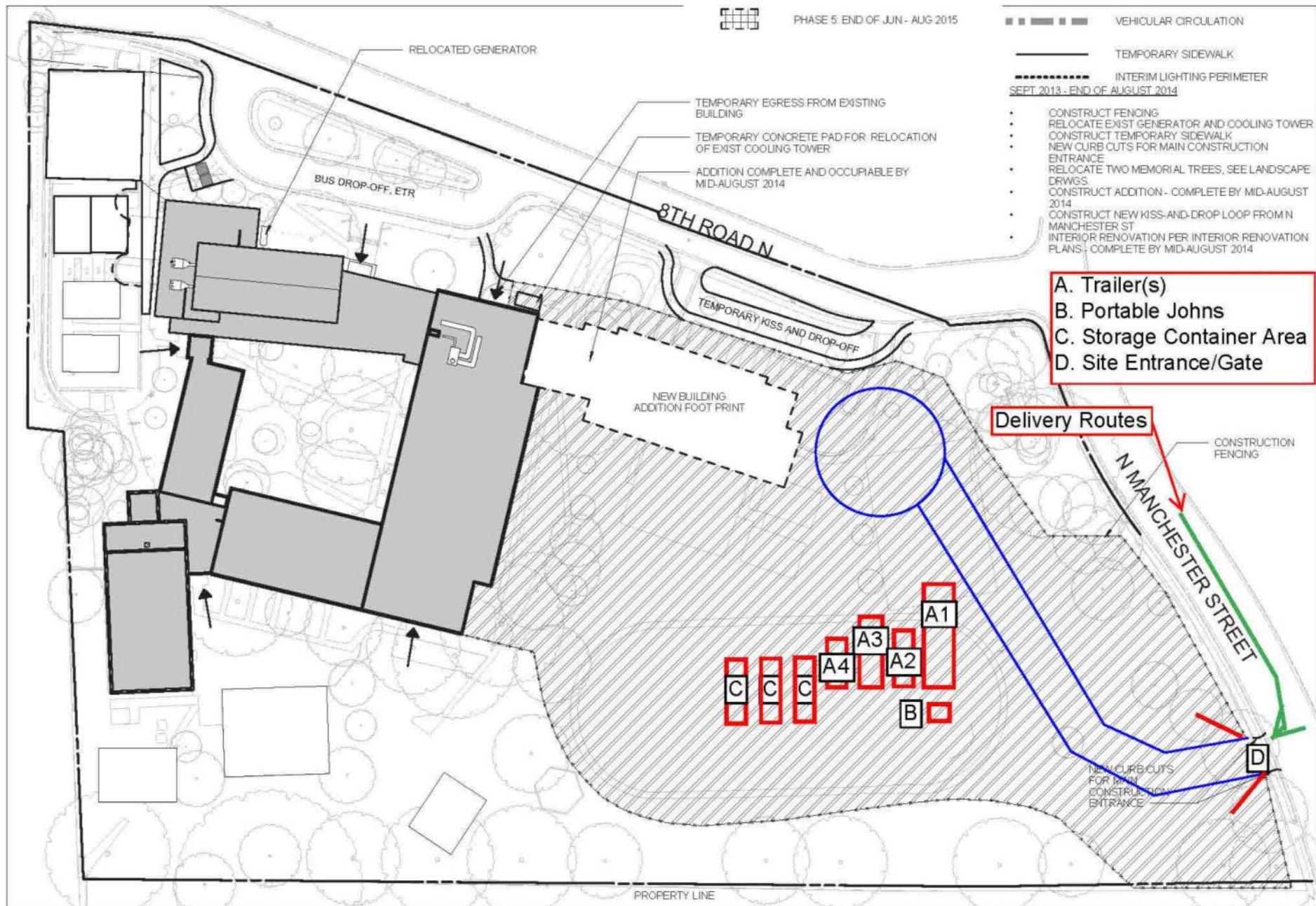
AUG 2013	SEP 2013	OCT 2013	NOV 2013	DEC 2013	JAN 2014	FEB 2014	MAR 2014	APR 2014	MAY 2014	JUN 2014	JUL 2014	AUG 2014
Yellow bar	Green bar											



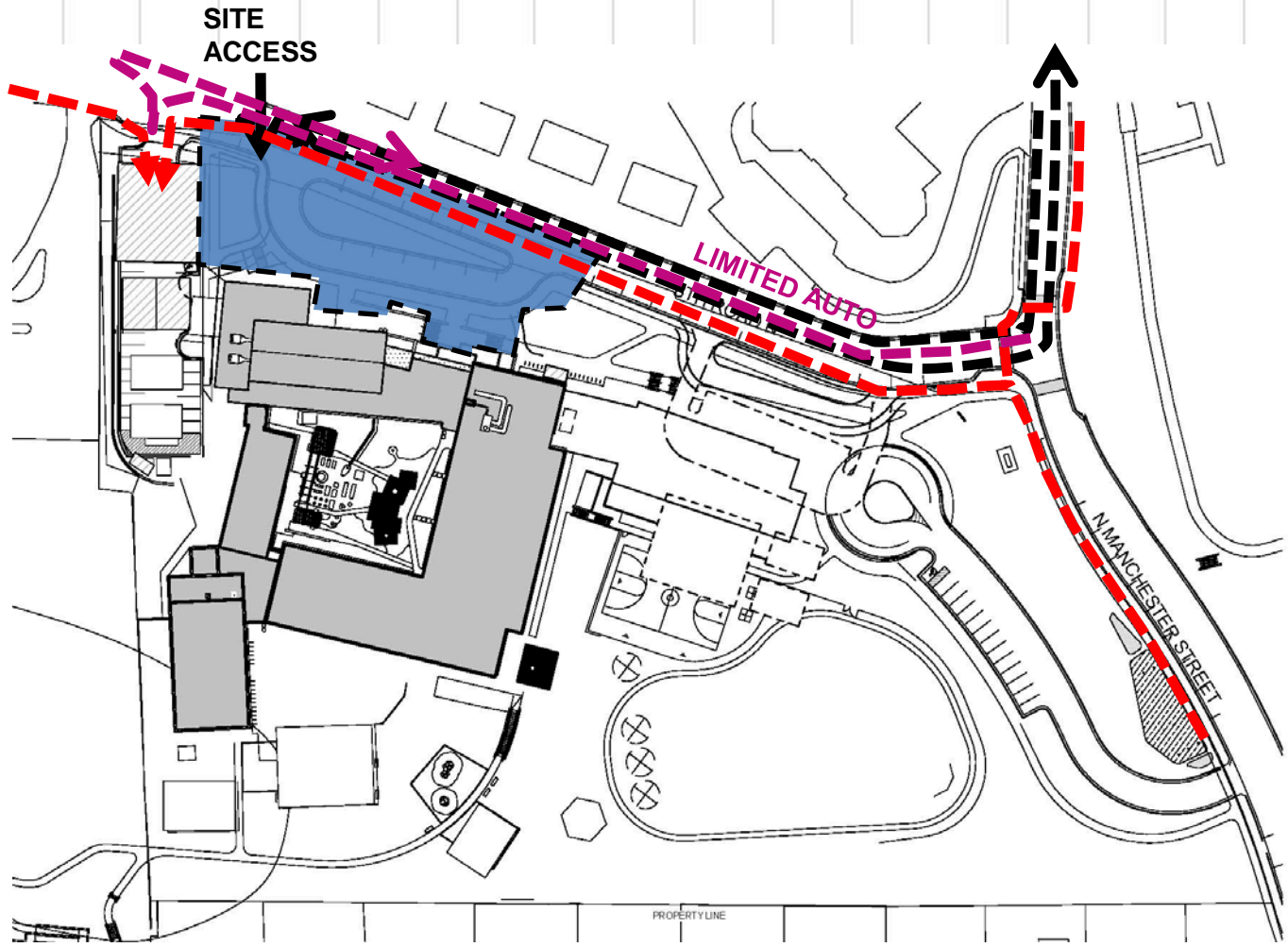
Begin construction of new addition, new parent drop-off and new black top play area

Re-grade and re-seed field

phase 1 - hauling route



phase 5: jul. 2015 - aug. 2015



Filling in of bus loop with new entry plaza



Contact Information:

- Jennifer Xu, Project Manager
Arlington Public Schools
571.238.0336 (c)
- Robin Hodges, Project Manager
J. Vinton Schafer
443.506.1247 (c)



THANK YOU