



Arlington  
Public  
Schools

## Abingdon Addition/Renovation Community Update (August 2016)

### Completed tasks:

- Demolition of first section of the existing building
- Installation of underground streetlight conduits
- Installation of conduits for new electrical services
- Internal partitions separating school from construction areas
- Internal demolition at existing gymnasium
- Installation of Erosion and Sediment control measures
- Demolition at stage for temporary school entry and reception areas
- Installation of new fire line and fire hydrant

### Ongoing Tasks:

- Demolition work within existing gymnasium and other phase 2 areas
- Installation of construction entrance at 29<sup>th</sup> street
- Installation of new electrical service
- Installation of temporary parking lot
- Installation of temporary relocatable complex
- Demolition in gymnasium area
- Installation of new bus loop and sidewalks
- Construction of Trade Center construction entrance
- Excavation for three story addition

- Installation of temporary construction office complex
- Installation of temporary Street lighting on 29<sup>th</sup> Street
- Renovation work of Phases 2A / 2B / 2C & 2D

**Construction activities this & next month:**

- Completion of the work at the temporary parking lot
- Completion of the new electrical service to the school and disconnection of the existing service
- Completion of the Trade Center construction entrance
- Complete installation of temporary relocatable complex
- Continued demolition work in Phase 2 area
- Continue work on storm water system and new sewer line connections
- Continued excavation for new footings for new three story addition
- Switch over to new electric power source

**Important Community Notices / Schedule related activities:**

- **Important:** The work for the switch over of the electrical service will take place from the 19<sup>th</sup> to the 23<sup>rd</sup>. HESS the General contractor will be working with Dominion Virginia Power (DVP) to install the new electrical service.
- **Change in Community liaison:** Sandra Hagen is no longer the Community liaison for the project. The new community liaison is Renee Adams also from HEERY international. Her contact information is
  - Renee Adams Cooper RA CCM LEED AP BD+C Snr. Associate
  - m: 202.510.6213
  - [radams@heery.com](mailto:radams@heery.com)
- Paving and completion of the temporary parking lot will start on Monday 8/15 and will take 2-4 days. Traffic will be minimally affected.
- Work related to the installation of the new water fire line will continue. Some of this work will affect the current school entry and the existing fire hydrant on 29<sup>th</sup> street. Traffic will be minimally affected.
- Installation of temporary street lights on 29<sup>th</sup> street has been pushed back and will start closer to the end of the month.
- Overall project remains on schedule. A few phasing modifications are in process.
- Work will occur on most Saturdays within the building.
- Contractor parking has been secured at the Fairlington Presbyterian Church and commenced use on August 1<sup>st</sup> 2016. All HESS contractor staff should be parking on site within the construction areas or at that location. (Notify APS if this is not happening).



Demolition of old school entrance



Curb and Gutter of new bus loop sidewalk



Excavation work for 3 story addition



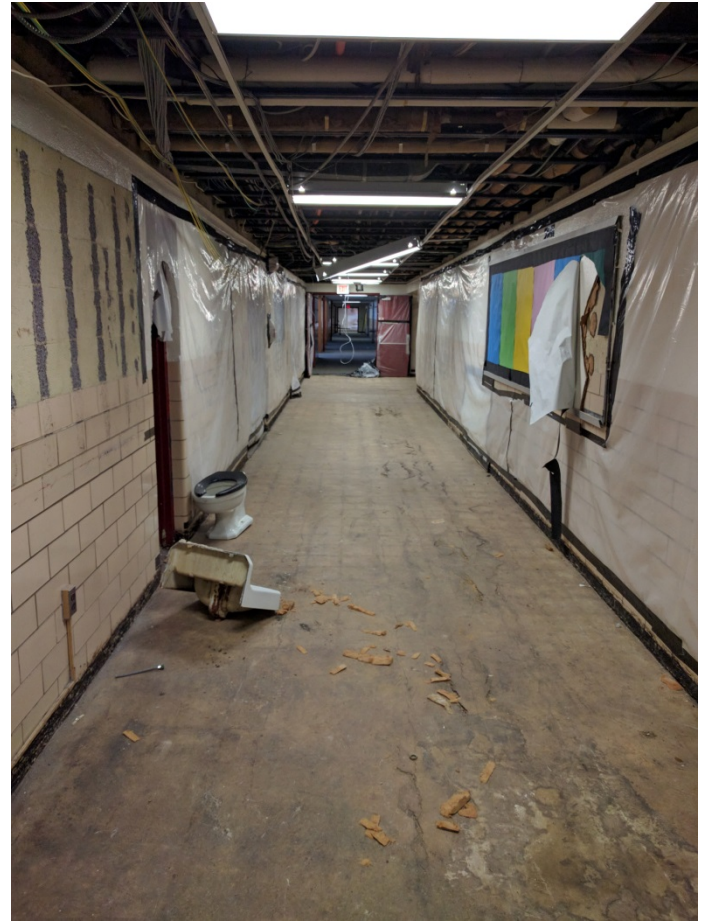
Pebble Sheds on the move!



Ongoing interior demolition (used to be Principal's office)



Installation of Bus loop curb and gutter



Demolition at interior corridors



Ongoing interior demolition



Demolition at restrooms



Old entry building demolition