



Arlington Public Schools
New Elementary School at Thomas Jefferson Site
Off-Site Transportation

Thomas Jefferson BLPC / PFRC Meeting
July 27, 2016



1. Review of Analysis
2. Key Transportation Issues
3. Recommendations
 - a. Safety
 - b. Pedestrian and Bicycle Access/Circulation
 - c. Congestion and Vehicle Access/Circulation

TRANSPORTATION ANALYSIS ELEMENTS



- Estimated future parking
- Location of on-site transportation facilities (e.g., accessible walkways, bus and parent pick-up and drop-off)
- Construction phase circulation, access and safety
- Traffic and speed around the school
- Off-site infrastructure improvements to support safe access and circulation for all travel modes
- School programs that support more walking, biking, carpooling, bus and transit use

TRANSPORTATION ANALYSIS ELEMENTS



- Estimated future parking
- Location of on-site transportation facilities (e.g., accessible walkways, bus and parent pick-up and drop-off)
- Construction phase circulation, access and safety
- **Traffic and speed around the school**
- **Off-site infrastructure improvements to support safe access and circulation for all travel modes**
- School programs that support more walking, biking, carpooling, bus and transit use

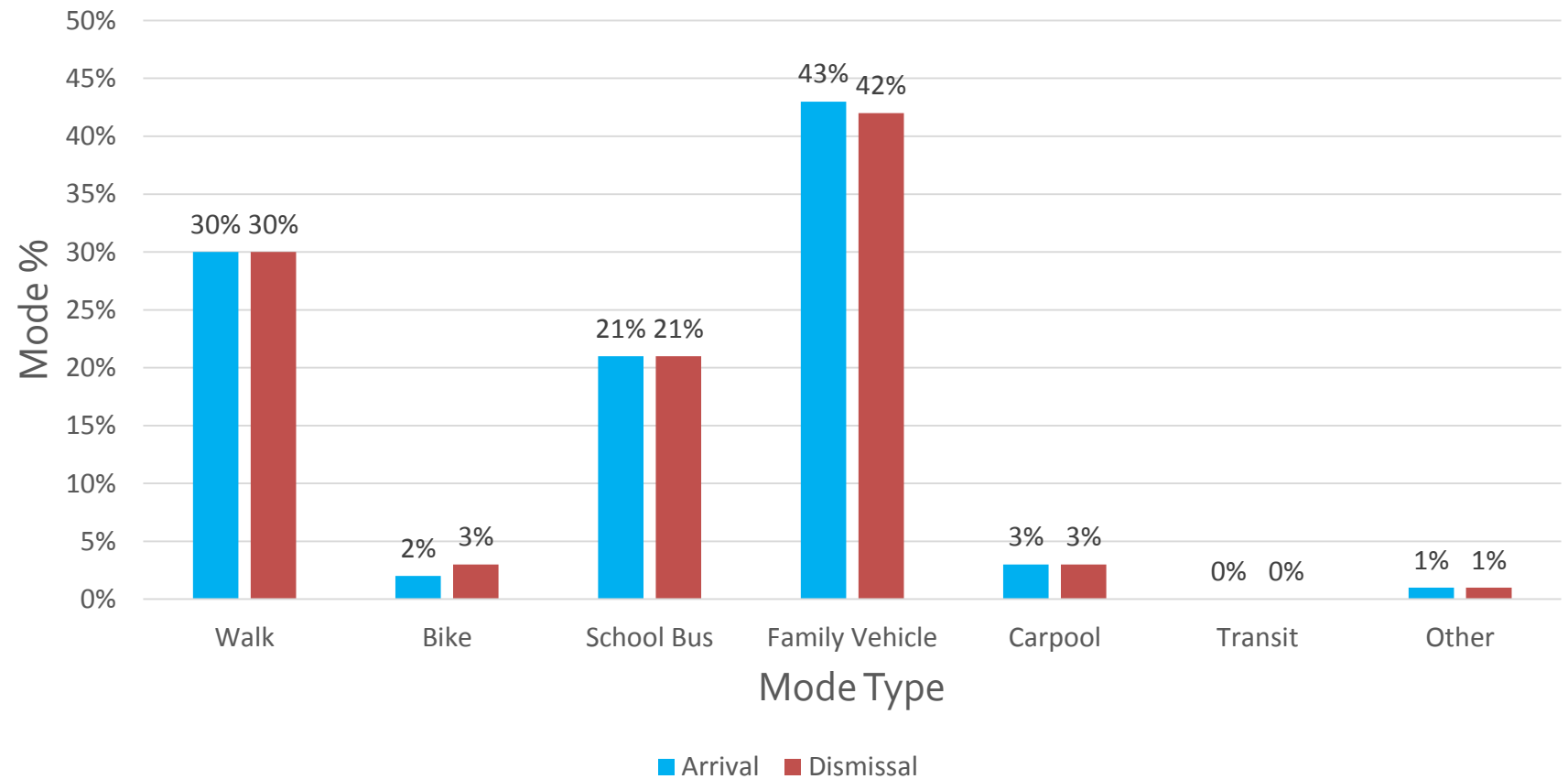
} Focus of
07/27
presentation

SURVEY DATA



- Student and staff surveys from 2014
- Additional student surveys in 2013 & 2015
- Survey data reviewed for TJ, Henry, and all APS neighborhood middle and elementary schools

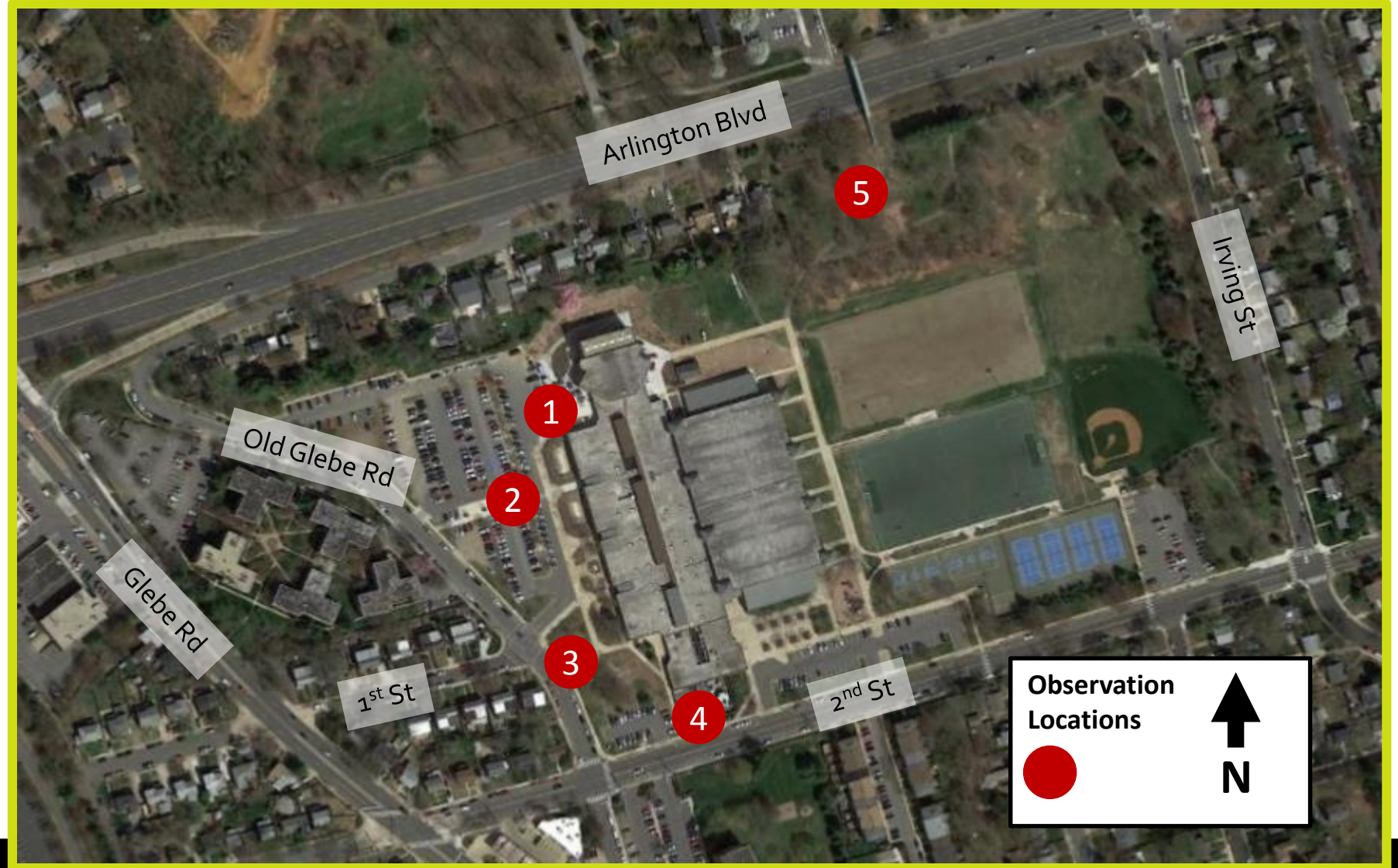
Student Travel Tally Travel Mode 2015



FIELD OBSERVATIONS



- Arrival and dismissal observations conducted in 2014 and 2016
- Count people by mode
- Observe behavior & issues

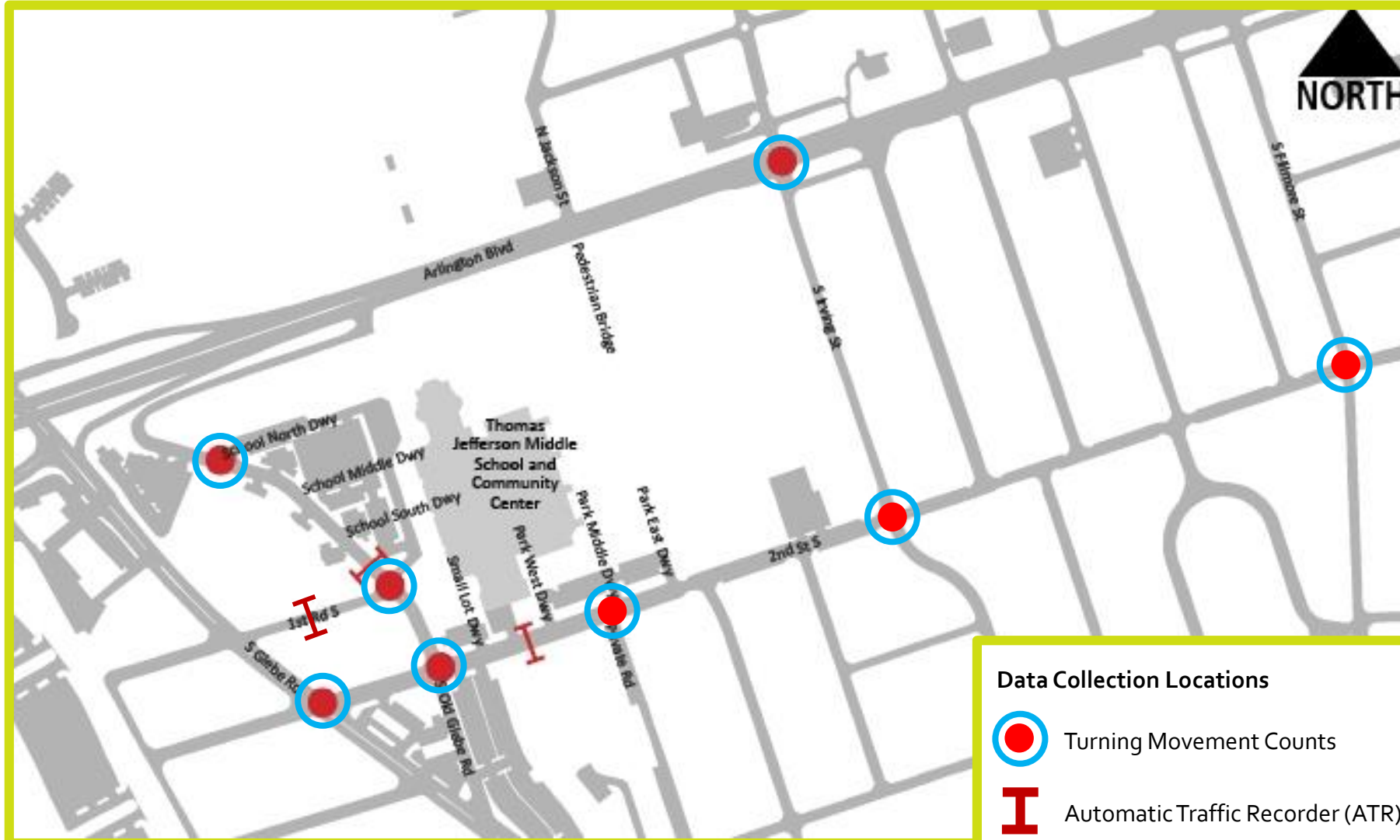


CRASH DATA

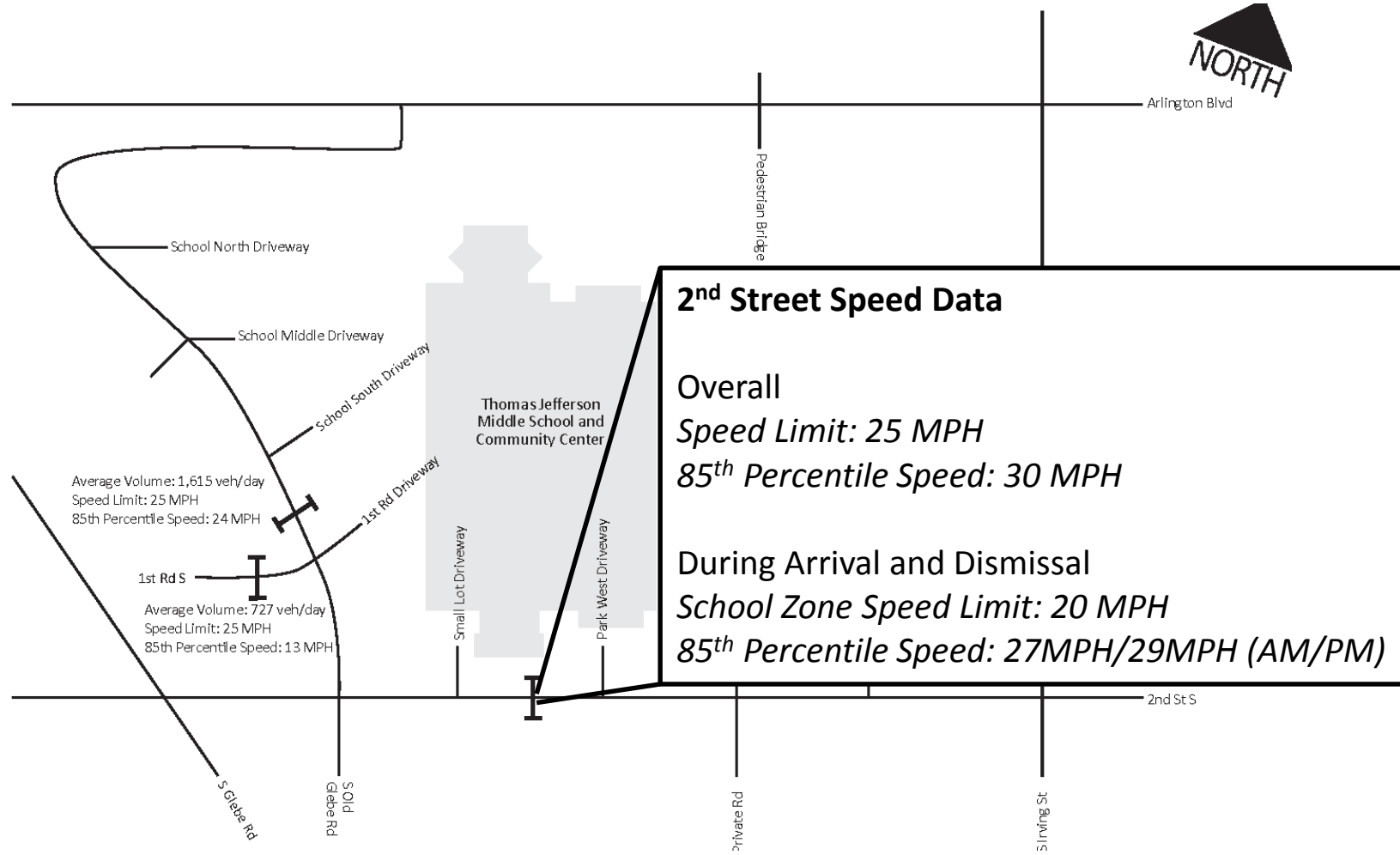
- Three years of crash data
- Crash data doesn't capture near misses or close calls
- Arlington Blvd and Glebe Road - most crashes typical of high-volume roads
- Seven crashes involved pedestrians
- Two crashes involved bicycles



TRAFFIC DATA COLLECTION



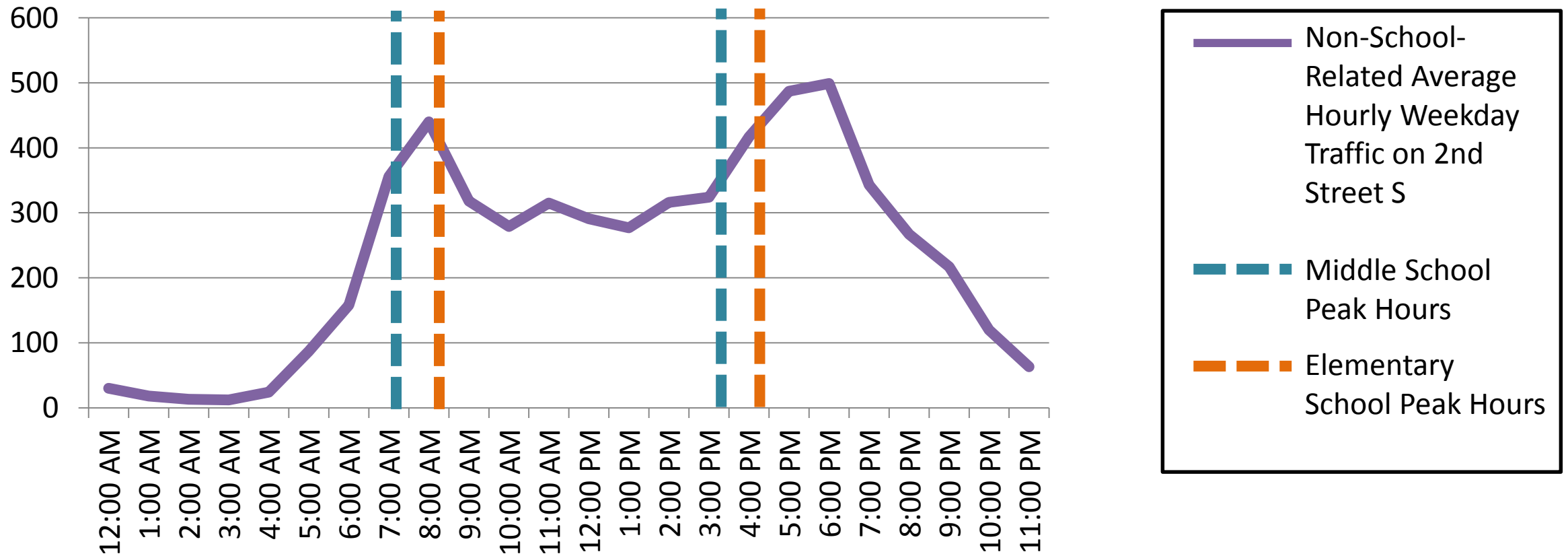
VEHICLE SPEEDS



TRAFFIC ANALYSIS



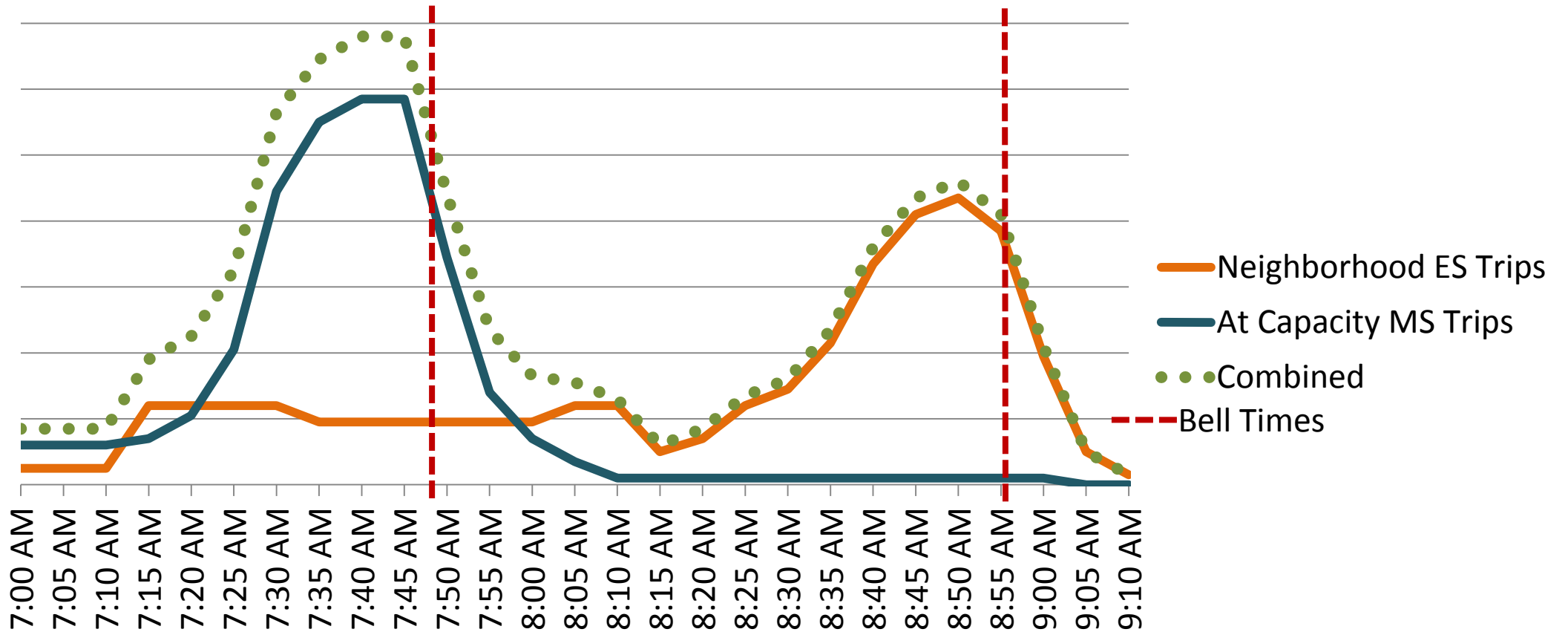
Non-School Related Traffic and School Peak Hours



TRAFFIC ANALYSIS



Middle and Elementary School Traffic Volume: Arrival



At-Capacity Middle School & Proposed Elementary School Traffic Pattern

Future Condition, Arrival



Delay, similar to existing conditions

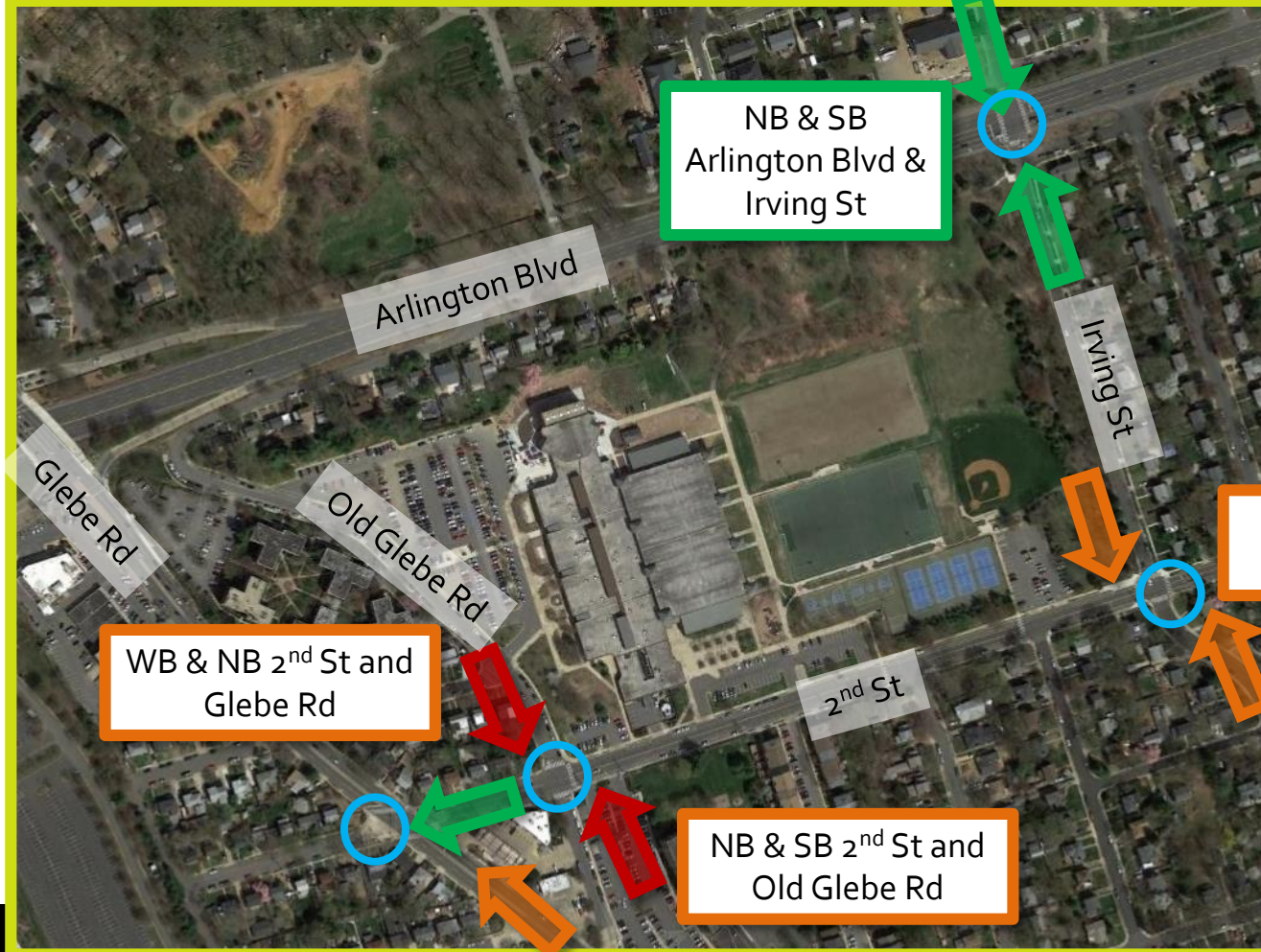


Slight increase in delay

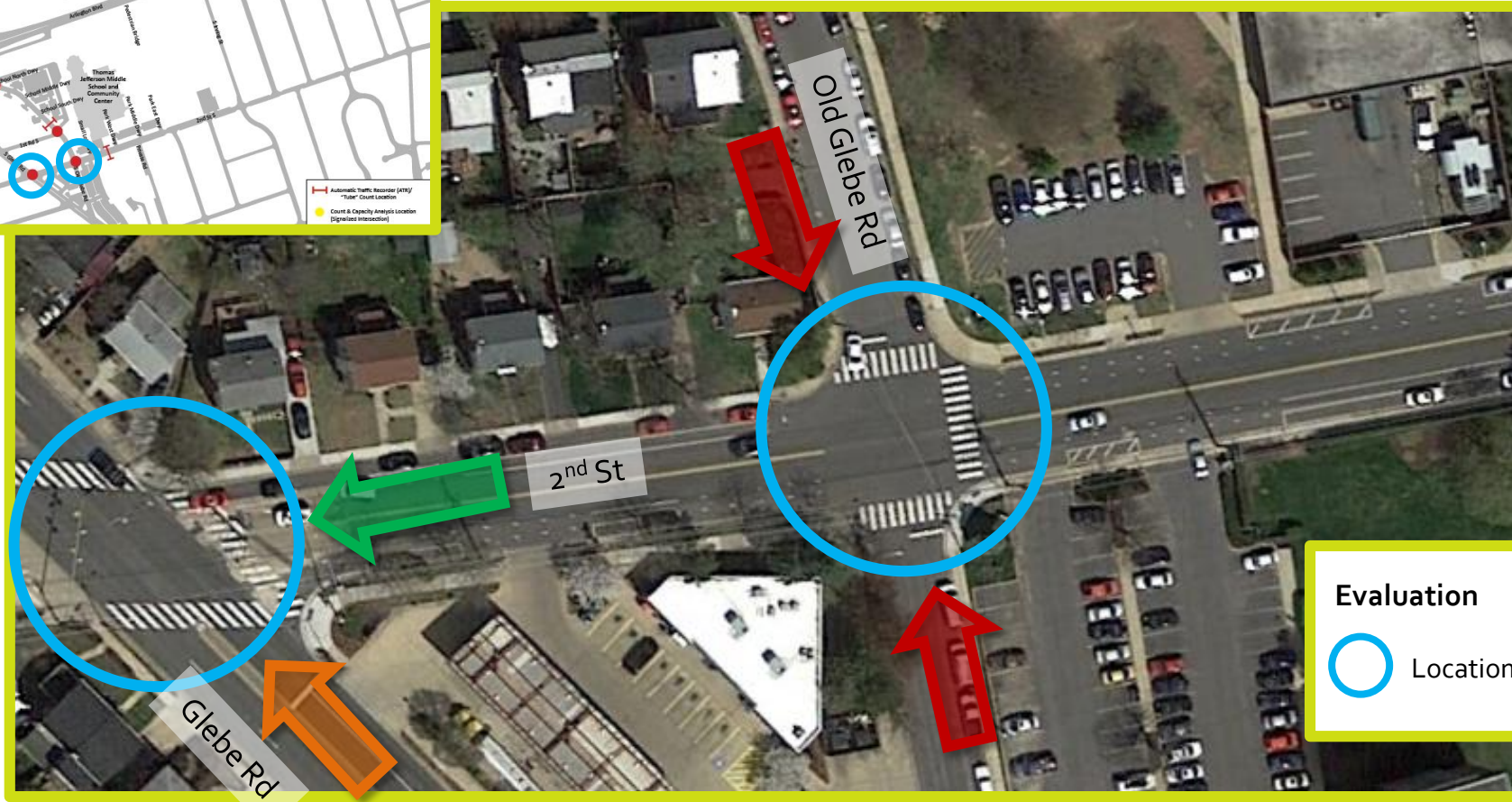
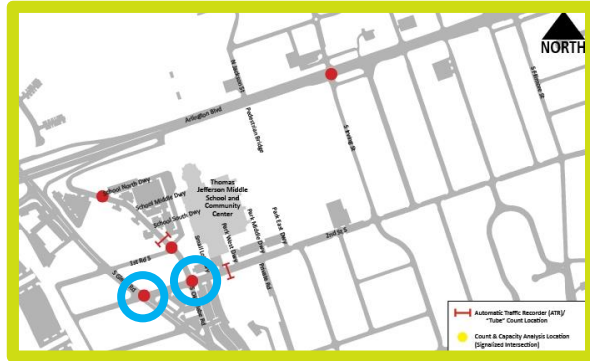


Greater increase in delay

Locations Experiencing Vehicle Delay Arrival



2nd and Old Glebe



Evaluation

- Location (Blue circle)

SUMMARY of KEY TRANSPORTATION ISSUES





1. Congestion at 2nd Street S and South Old Glebe
2. Vehicle Speed on 2nd Street S
3. Reported wrong way driving and speed on 1st Road S
4. Pedestrian/ADA and Bicycle Access to Site

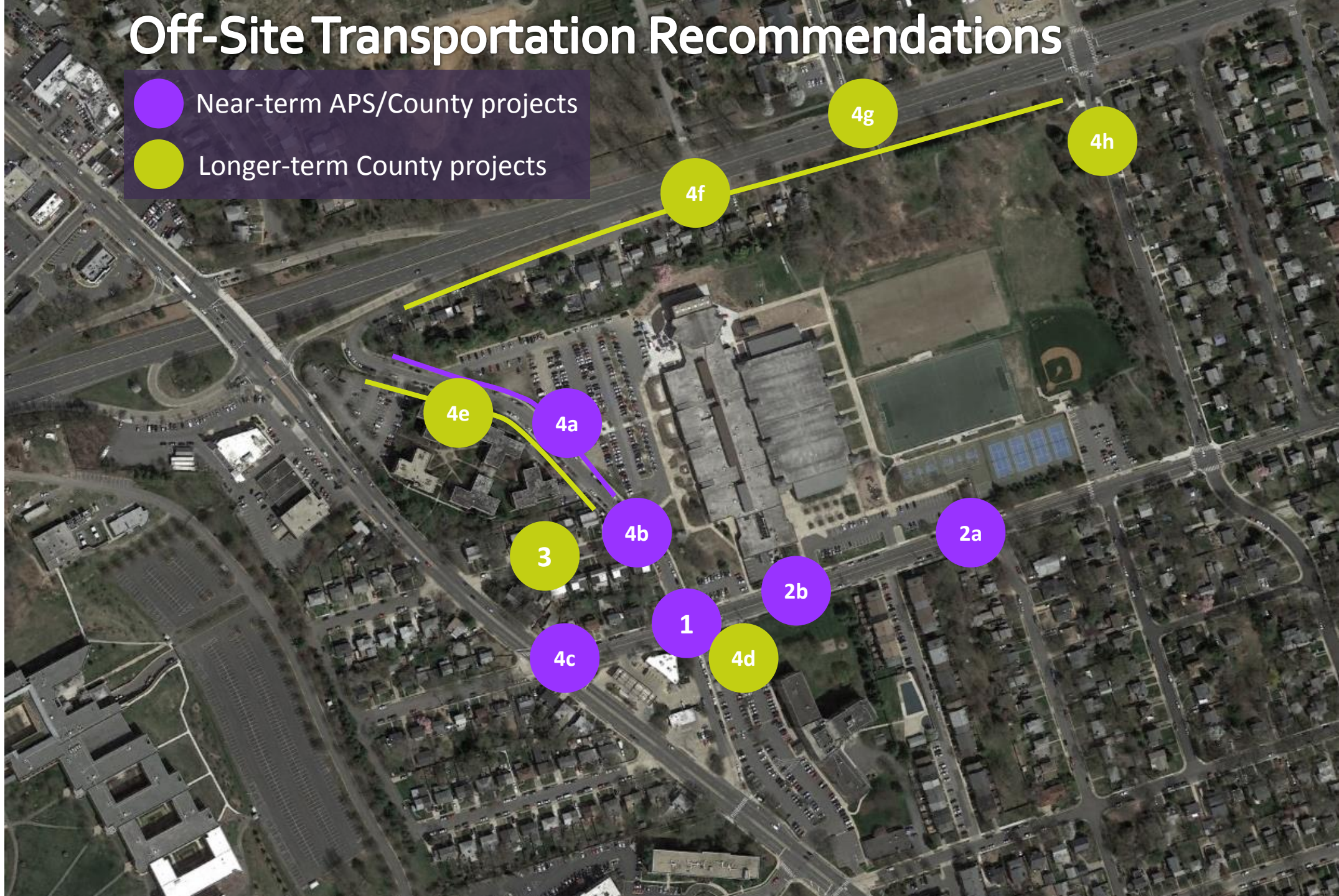
RECOMMENDATIONS



- “Near-term” indicates projects that are recommended for completion before the new elementary school opens on the TJ campus. Projects may be implemented by APS, the County, or through the joint fund.
- “Longer-term” indicates projects that are recommended for consideration and implementation by the County.

Off-Site Transportation Recommendations

-  Near-term APS/County projects
-  Longer-term County projects



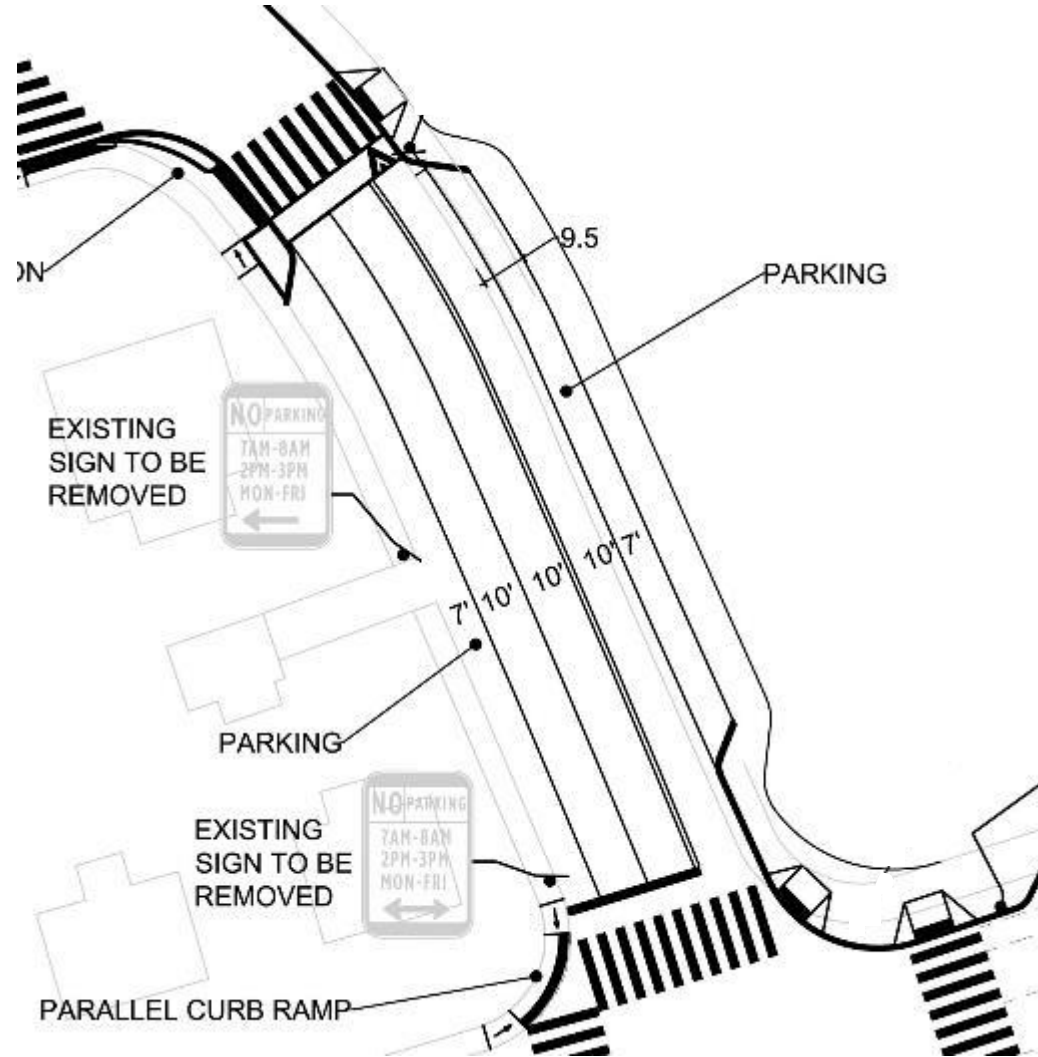


1. Congestion at 2nd Street and South Old Glebe

1. Congestion at 2nd Street and South Old Glebe



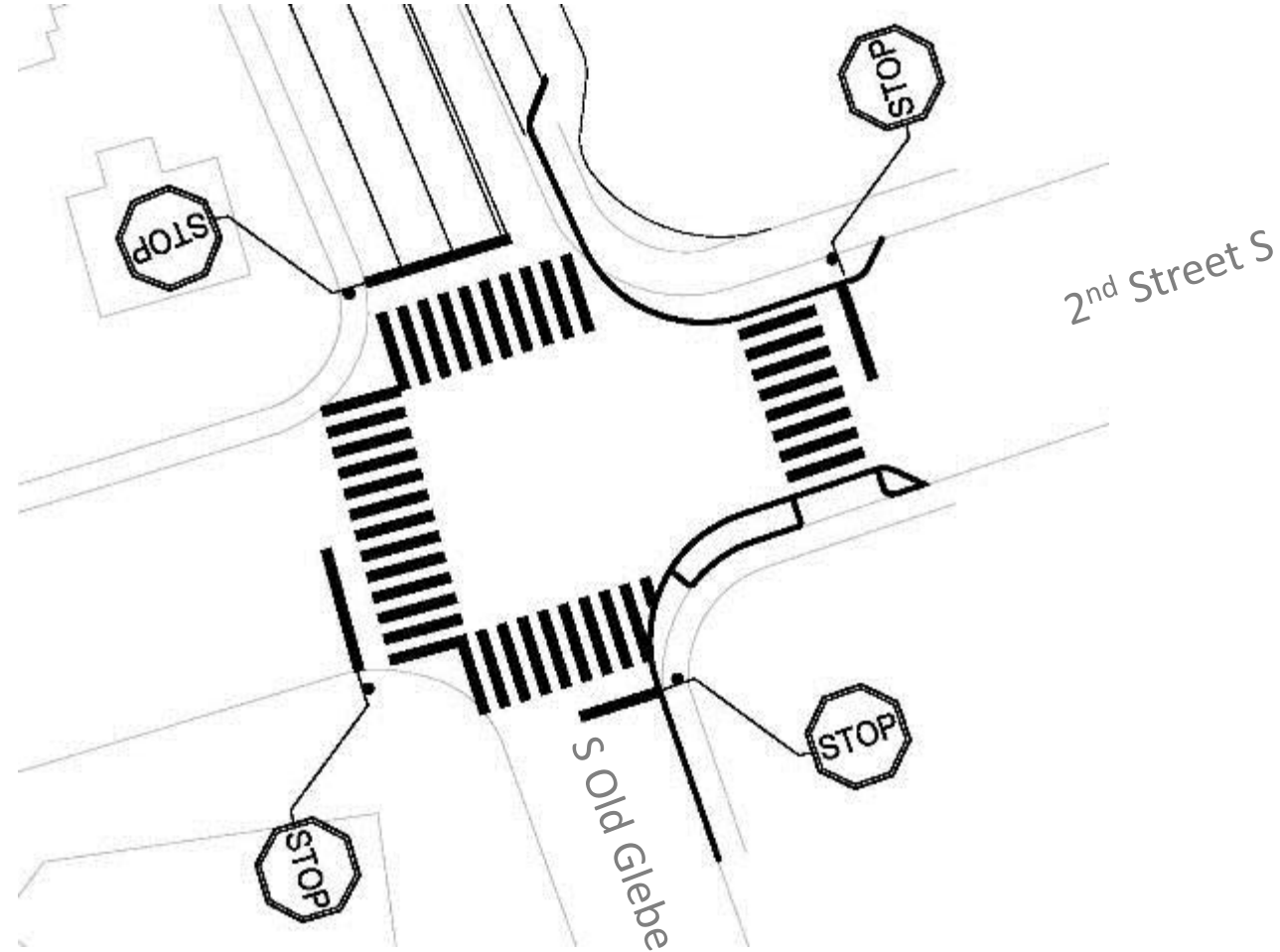
1a Add dedicated southbound right turn lane on S Old Glebe



1. Congestion at 2nd Street and South Old Glebe



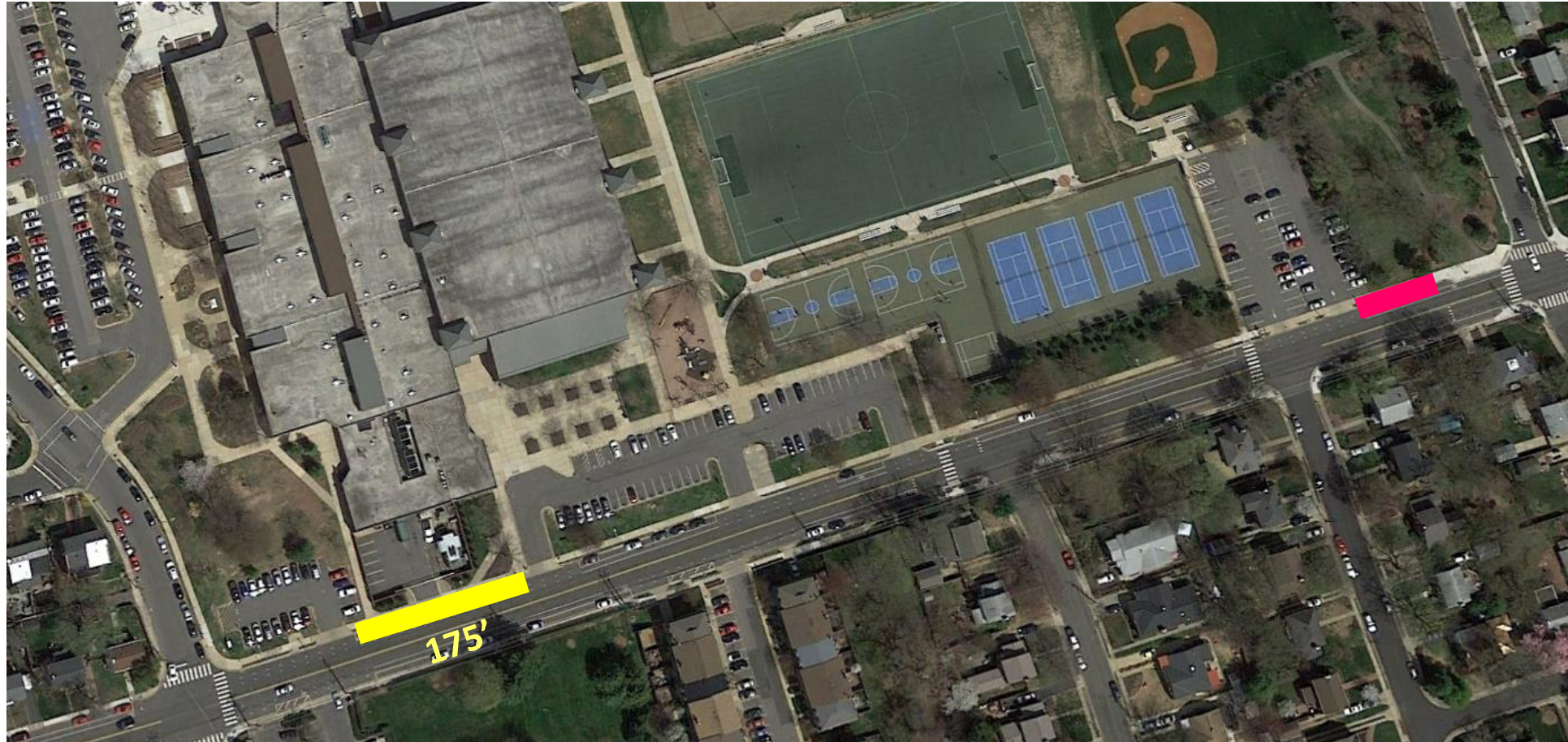
1b Install 4-way stop signs



1. Congestion at 2nd Street and South Old Glebe



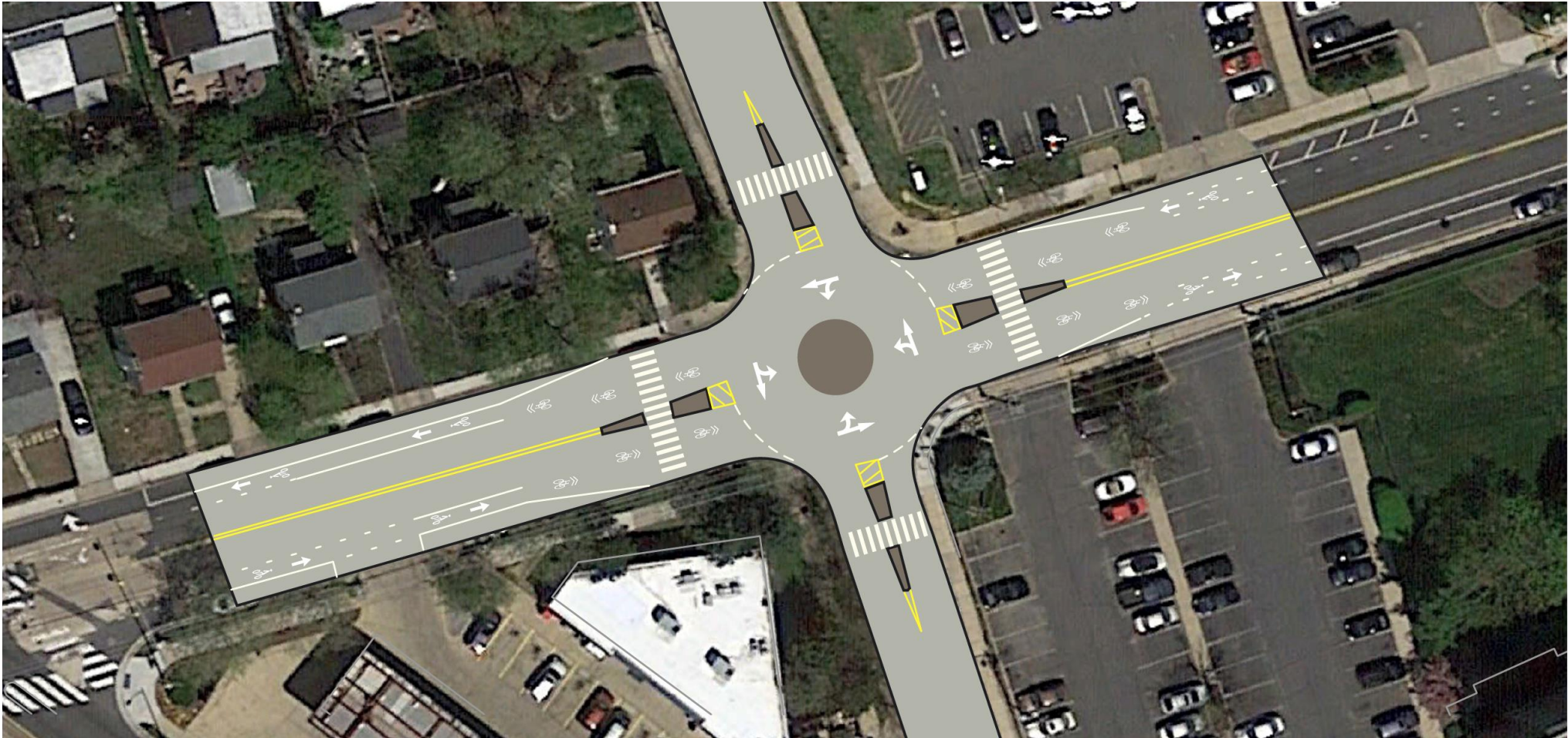
1c Consider alternative drop off location on 2nd Street



1. Congestion at 2nd Street and South Old Glebe



1d Consider a mini-roundabout





Example from Bel Air, MD
Intersection of Tollgate & MacPhail

<https://youtu.be/3KLbr1awEbk?t=134>

1. Congestion at 2nd Street and South Old Glebe



1d Consider a mini-roundabout



1. Congestion at 2nd Street and South Old Glebe



1d Consider a mini-roundabout





2. Vehicle Speed on 2nd Street

2. Vehicle Speed on 2nd Street S



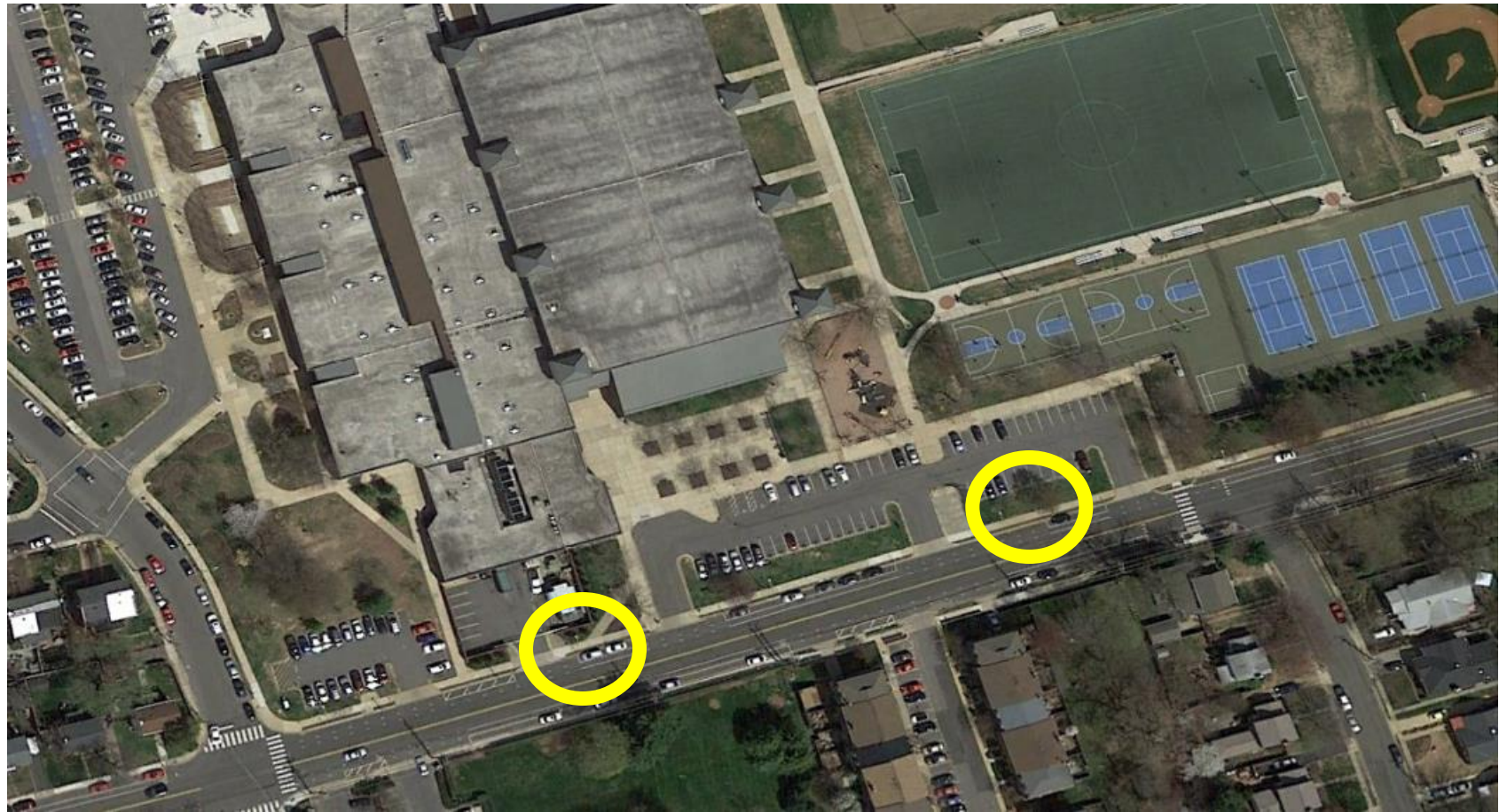
2a Install raised crosswalk & rapid flashing beacon in front of community center



2. Vehicle Speed on 2nd Street S



2b If no mini-roundabout, install additional raised crosswalk near western driveway of community center





3. **1st** Road South

3. 1st Road S



3a Continue to partner with the County to explore options such as increased enforcement, rumble strips, signage or other interventions

- Data collected in 2004, 2007, 2012 and 2014
- 'No U-Turn' sign and a 'One-Way' sign to be installed by mid-August





4. Pedestrian and Bicycle Access to Site

4. Pedestrian and Bicycle Access to Site



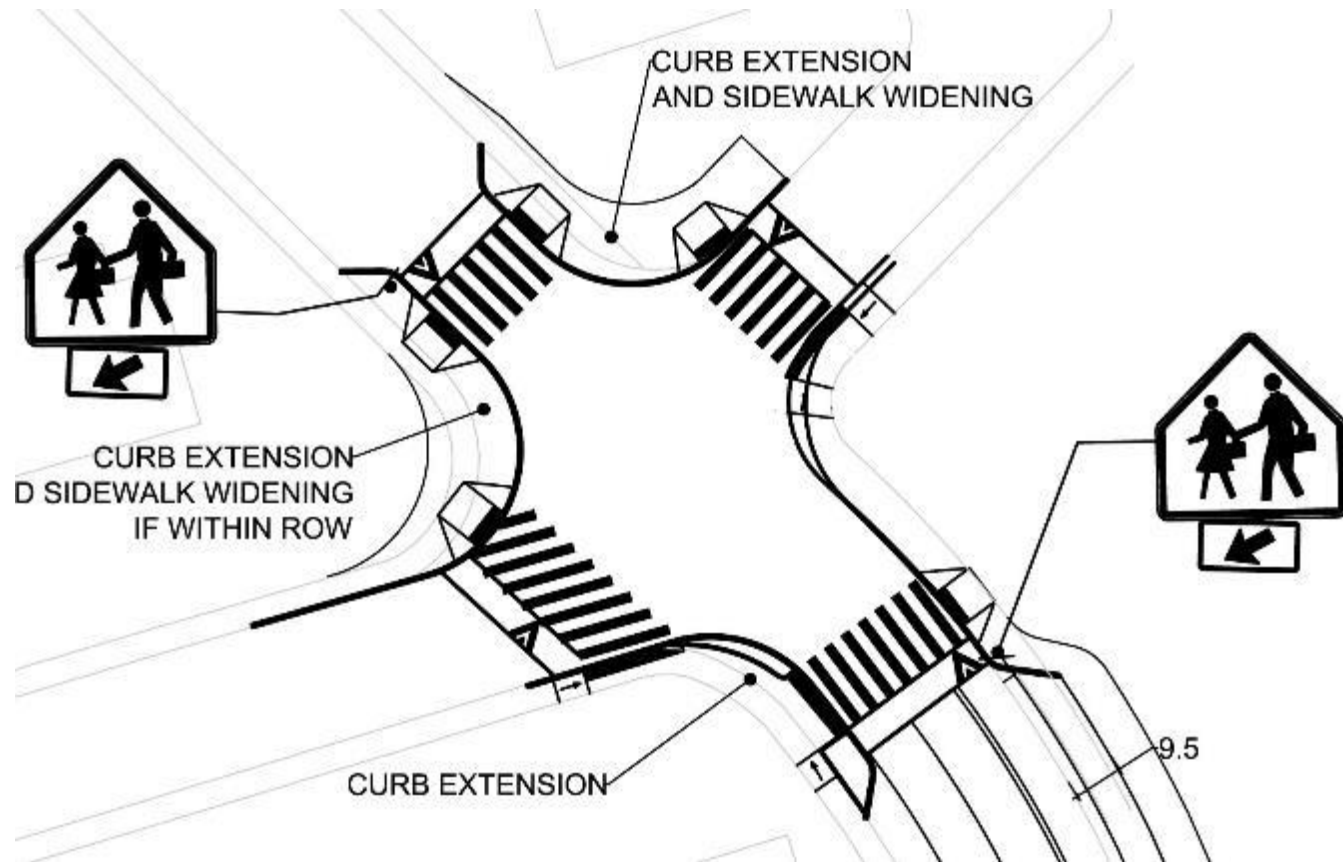
4a Upgrade curb ramps and widen sidewalks on school site and at adjoining intersections



4. Pedestrian and Bicycle Access to Site



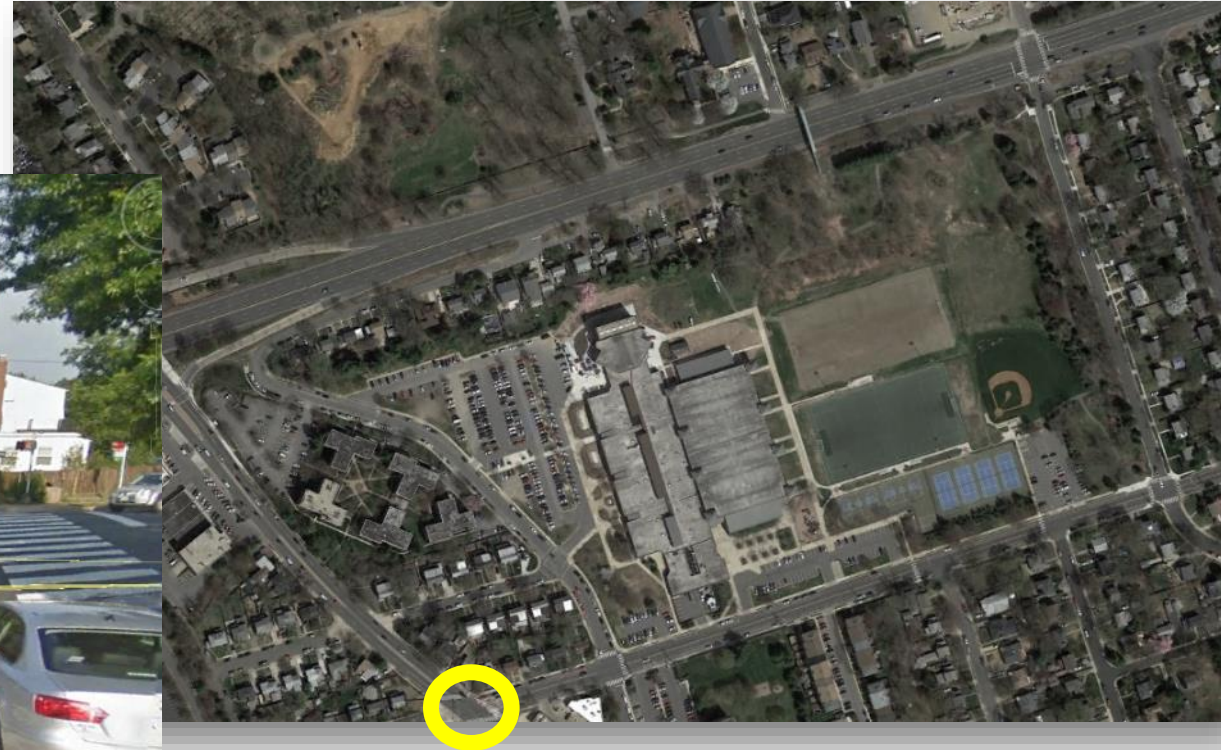
4b S Old Glebe and 1st Road S: Curb extensions to shorten crossing distance and encourage yielding to pedestrians



4. Pedestrian and Bicycle Access to Site



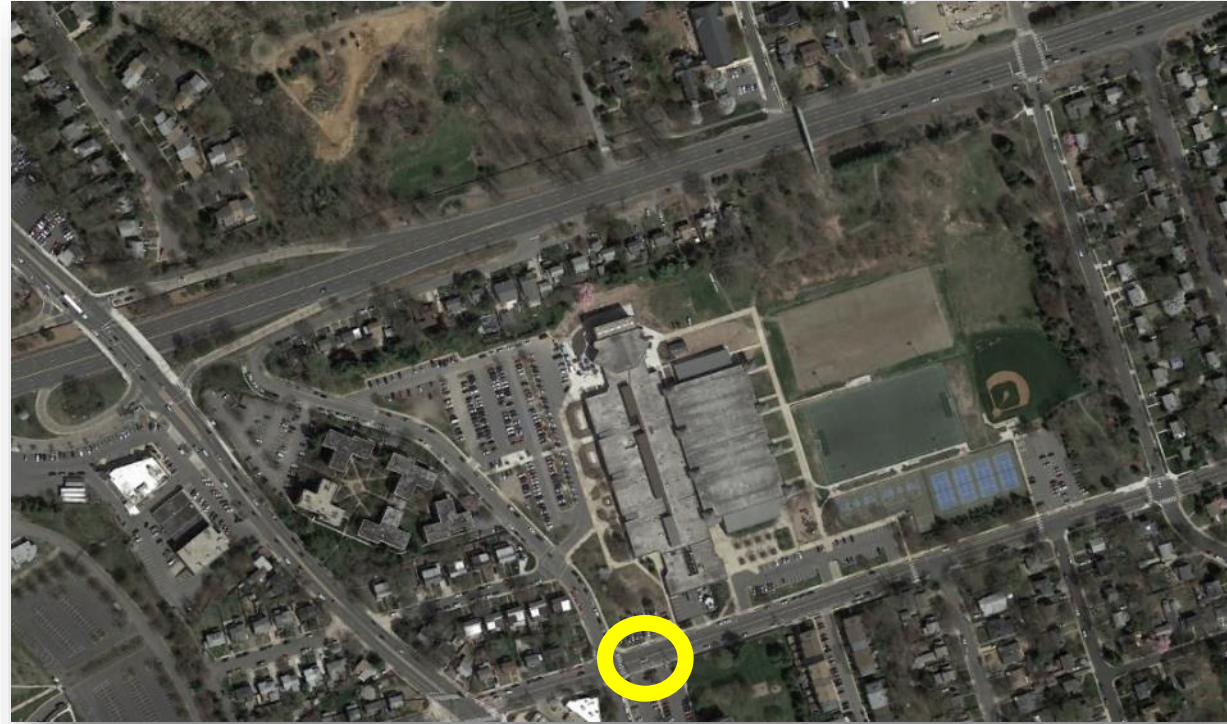
4c S Glebe Rd and 2nd St S: restripe crosswalk & consider signal timing adjustments



4. Pedestrian and Bicycle Access to Site



4d Consider closing western driveway of Dominion Arms parking lot



4. Pedestrian and Bicycle Access to Site



4e Replace/repair sidewalk on west side of S Old Glebe to provide 4' clear width, address heaves and provide ADA ramps



4. Pedestrian and Bicycle Access to Site



4f Install sidewalk and improve trail along Route 50 to provide improved connectivity along north side of site; improve bus stop access



↶ County project already planned for implementation summer 2016

4. Pedestrian and Bicycle Access to Site



4g Pedestrian Bridge over Route 50: Explore improving traction in cold or wet weather & add edge striping to trail at bridge entrance improve visibility in low light conditions



4. Pedestrian and Bicycle Access to Site



4h Stripe new crosswalk on Irving Street near Route 50 intersection





**Discussion /
Questions**