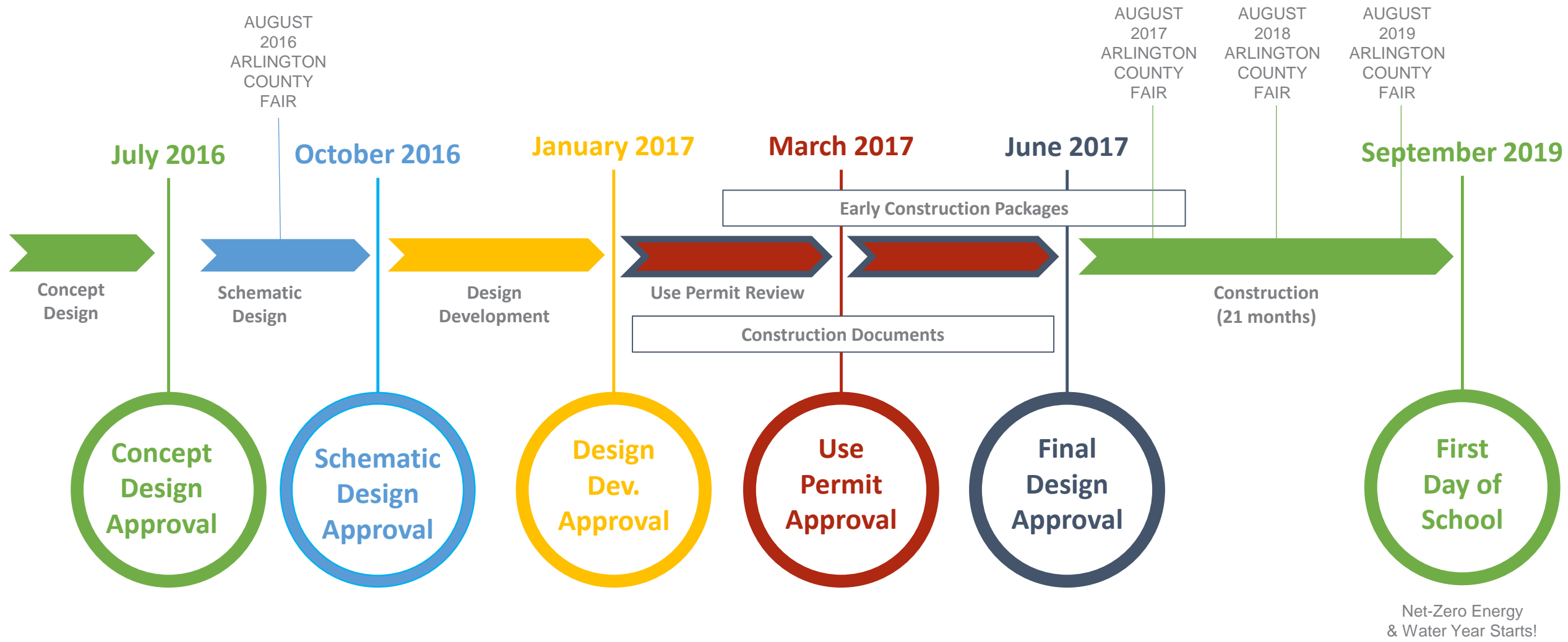


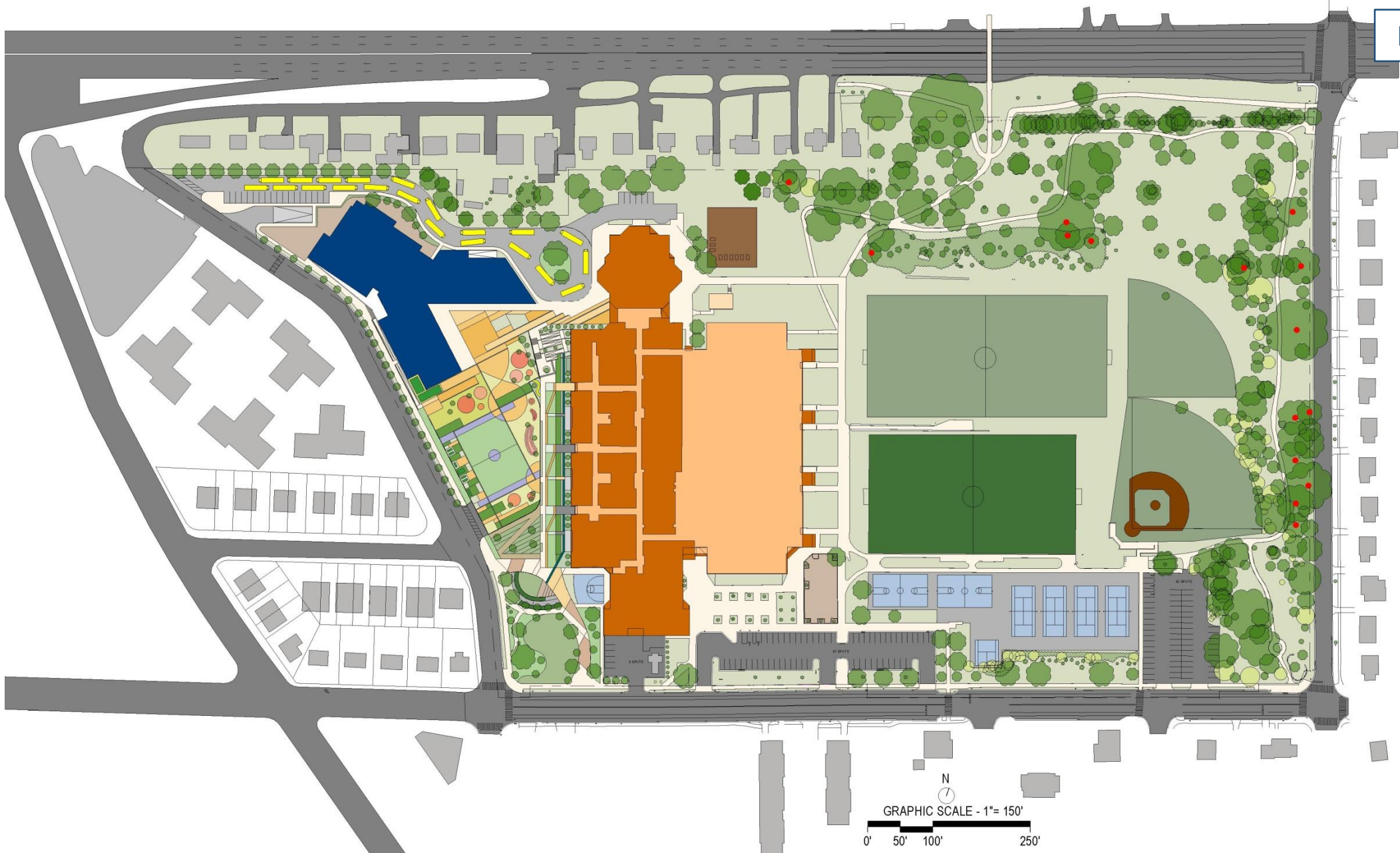
NEW ELEMENTARY SCHOOL AT THOMAS JEFFERSON MIDDLE SCHOOL

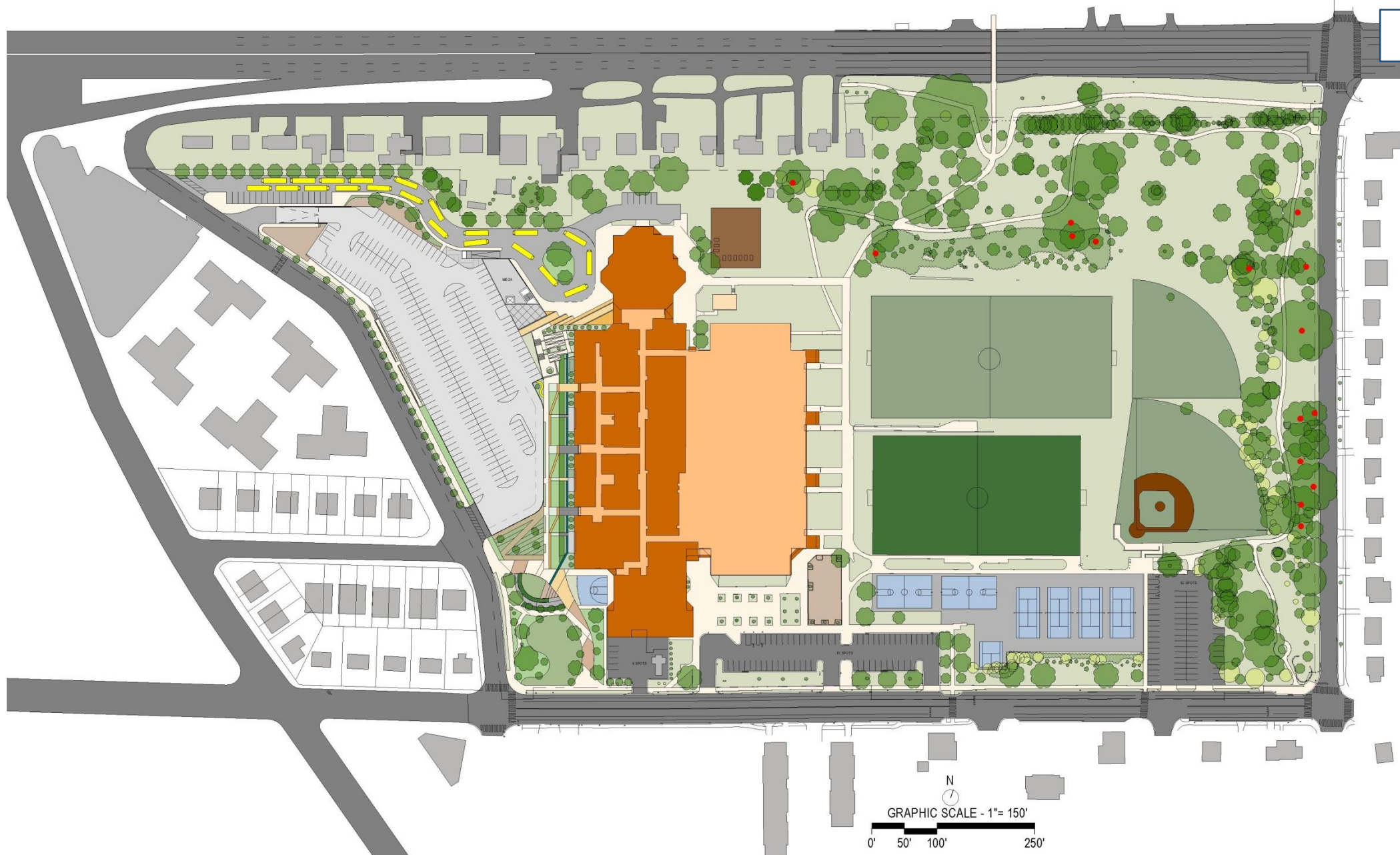


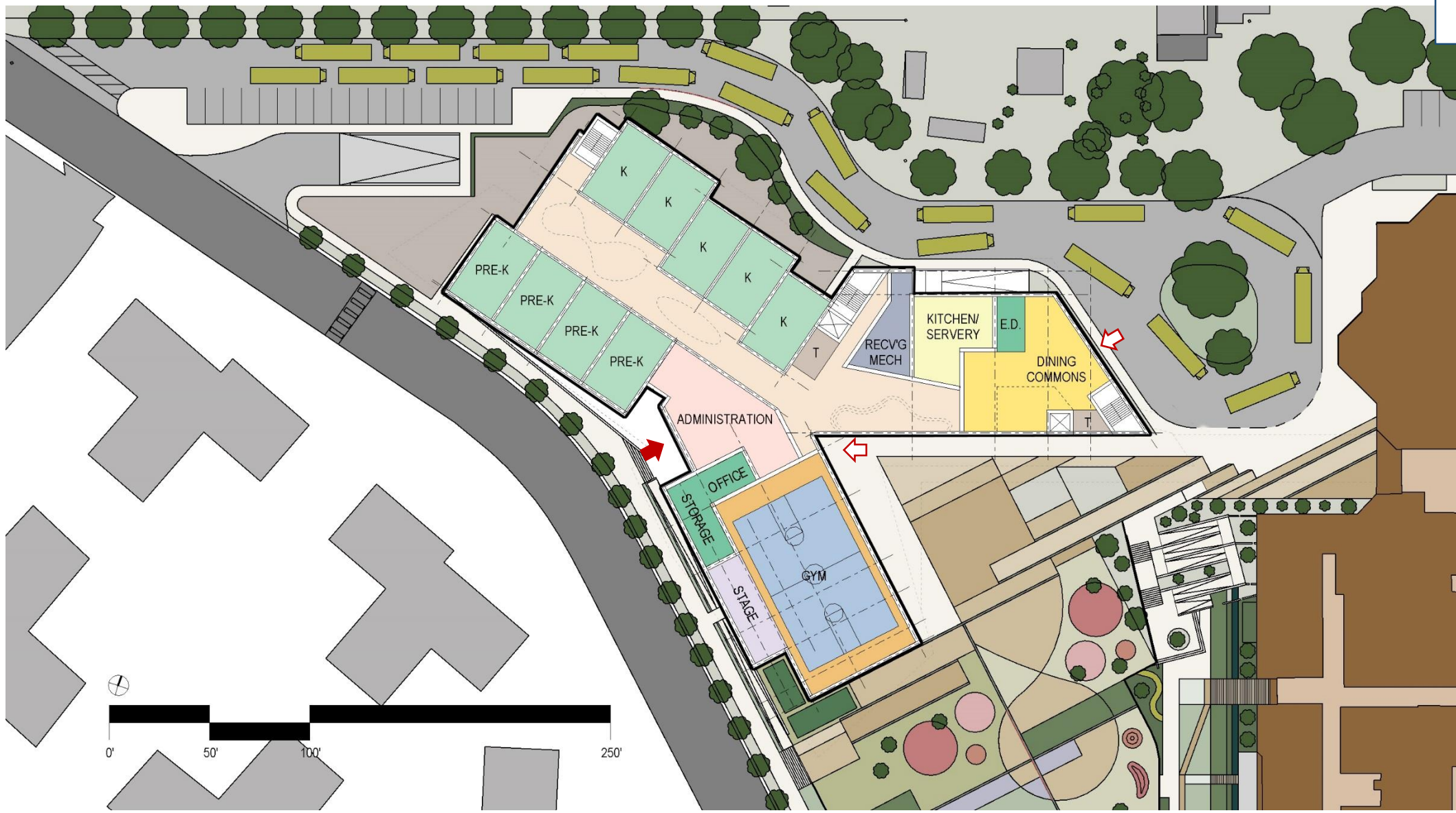
General Schedule | Timeline

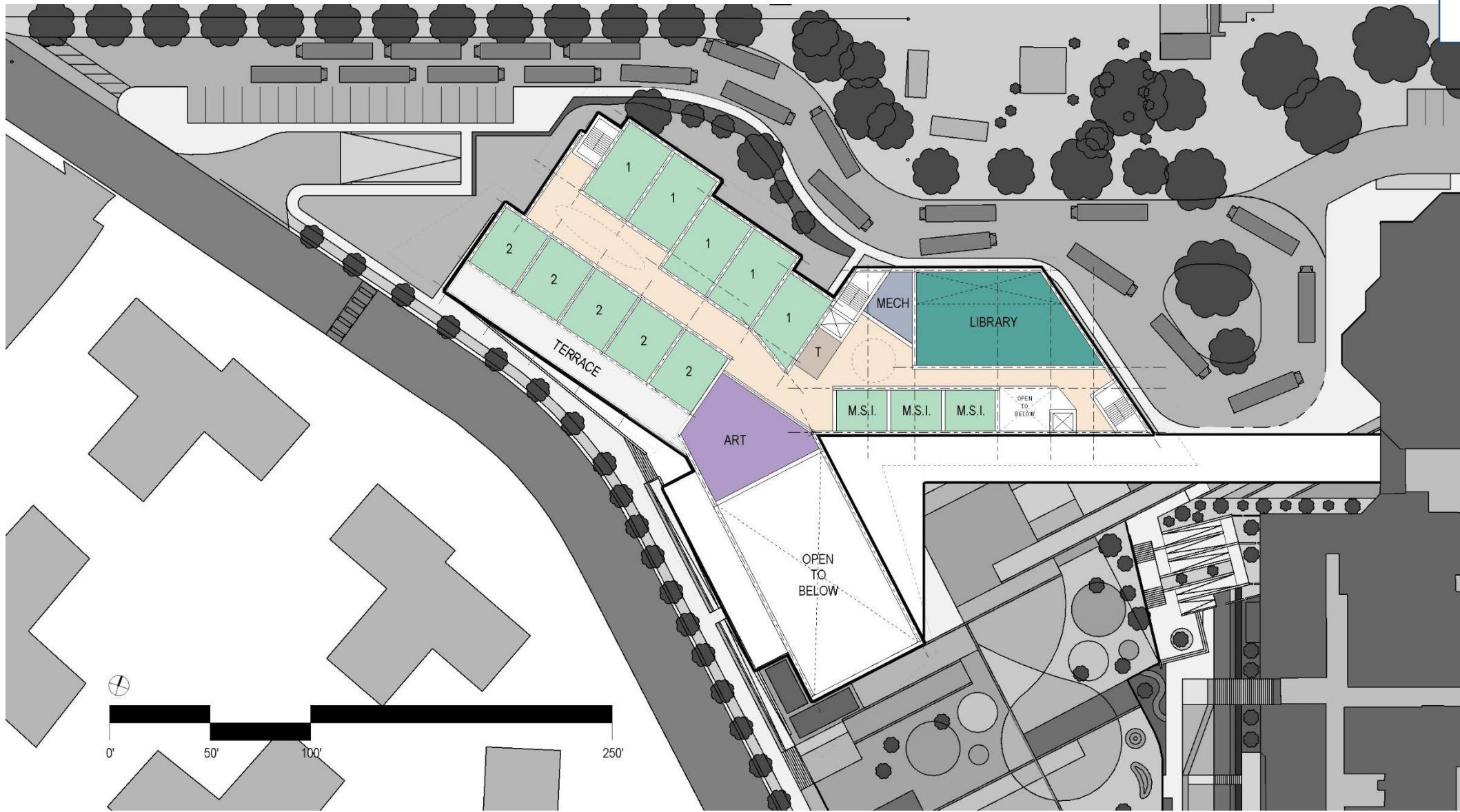


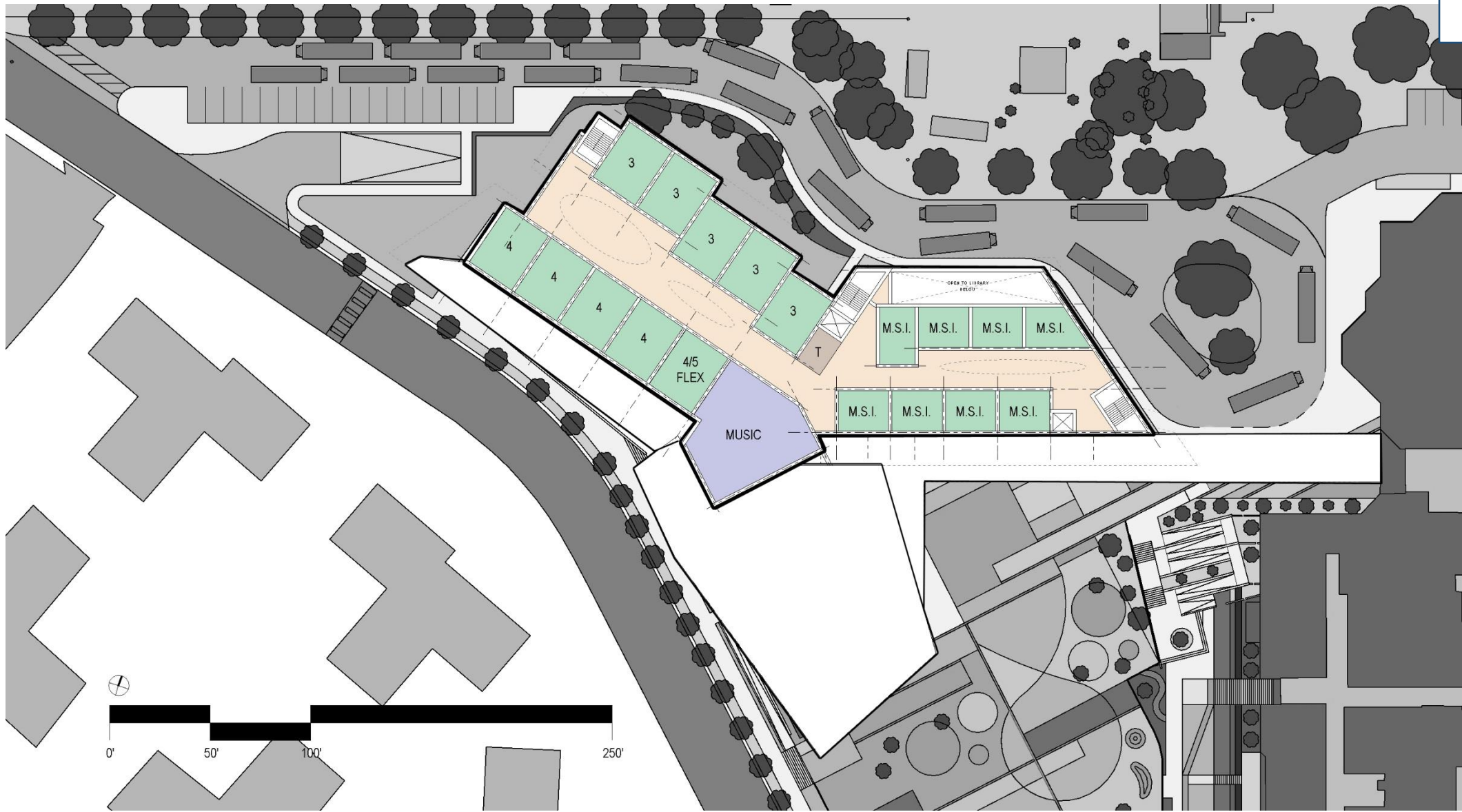
Net-Zero Energy & Water Year Starts!

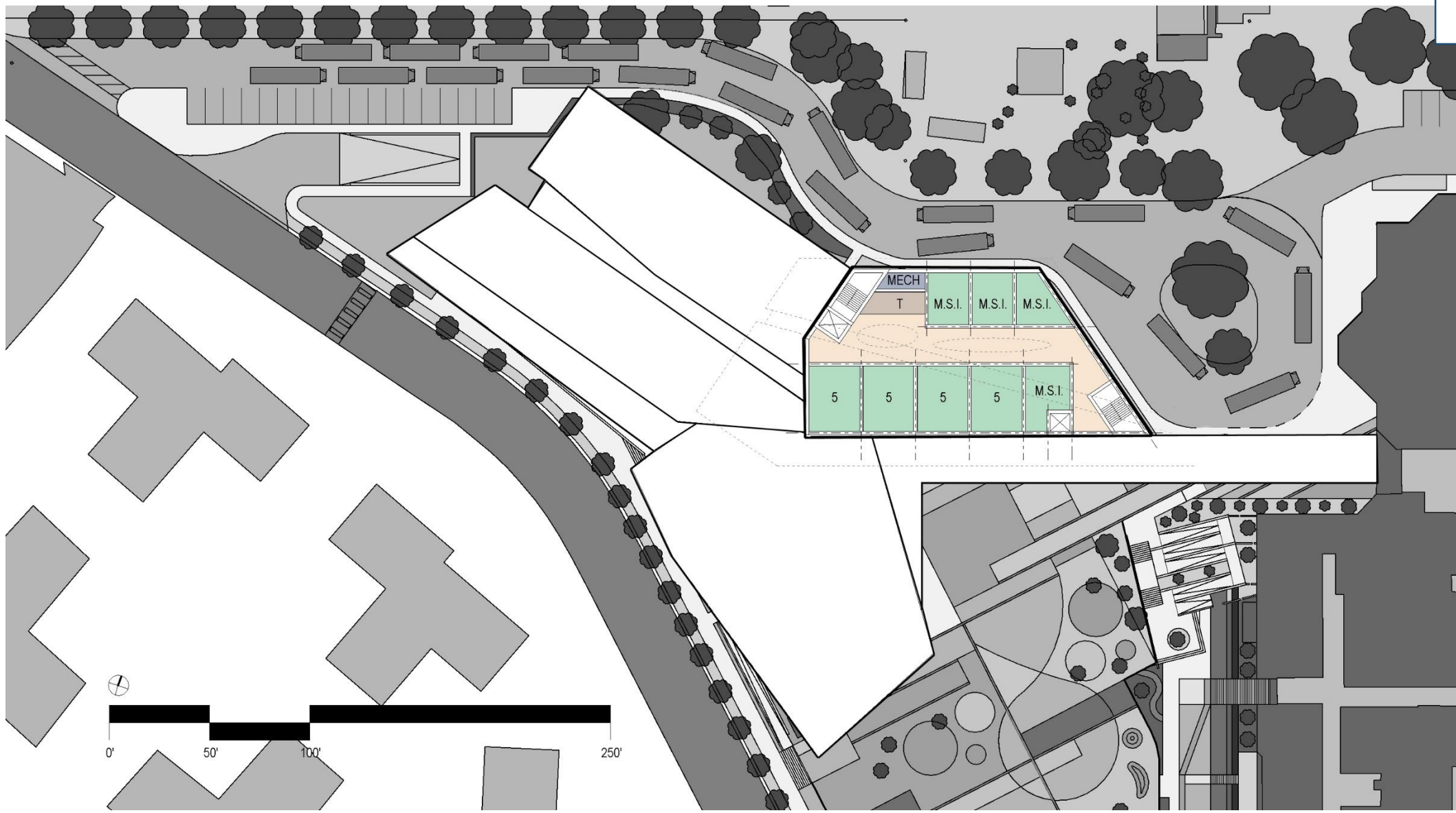


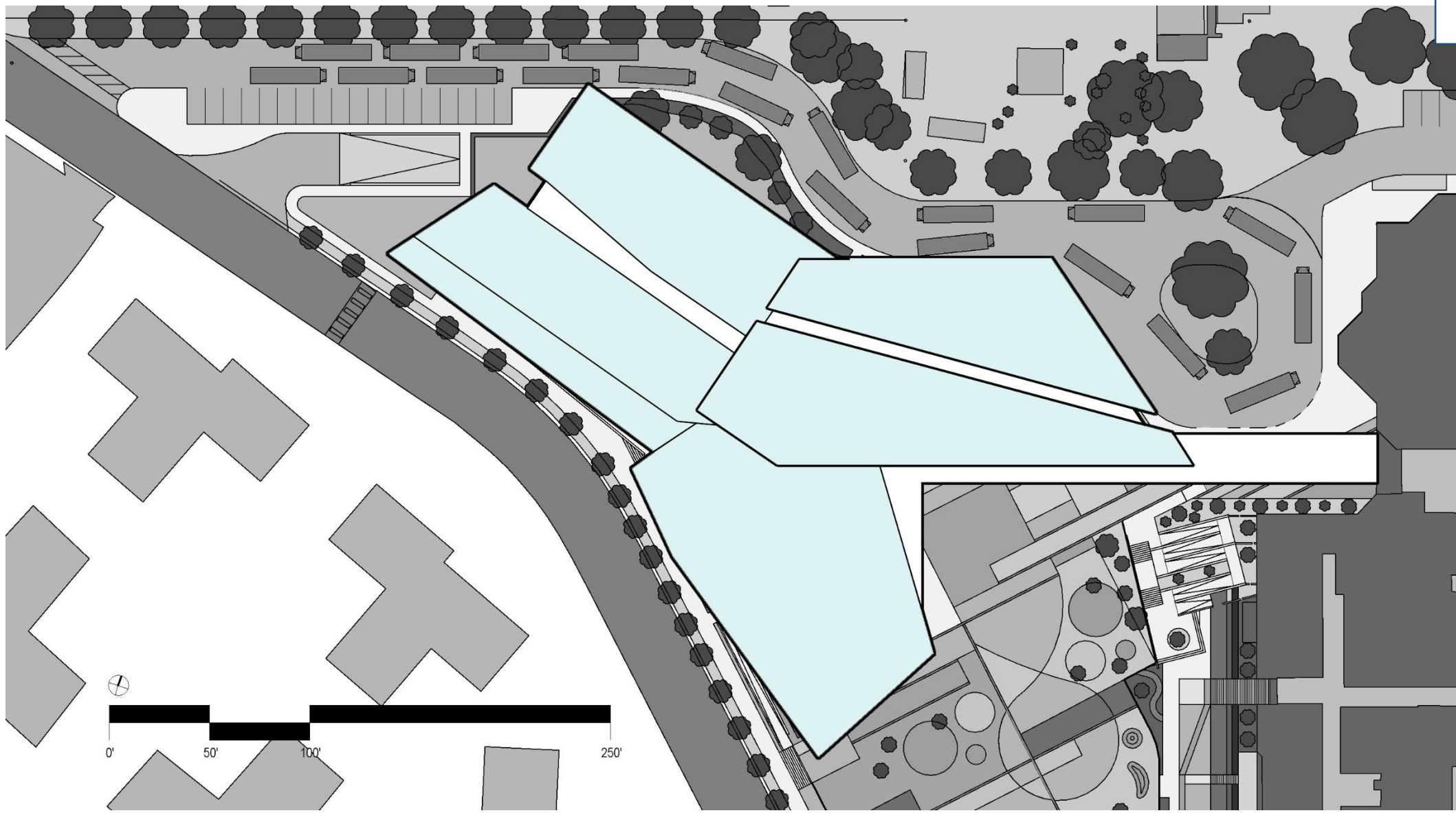












Space Program Summary

Pre K & Kindergarten:	9,200 nsf
First & Second Grades:	10,560 nsf
Third, Fourth & Fifth Grades:	12,700 nsf
Special Education + Specialty Programs:	9,080 nsf
Guidance + Administration + Teacher Support:	6,155 nsf
Art + Music:	6,305 nsf
Library:	4,340 nsf
Food Services:	5,390 nsf
Physical Education:	9,110 nsf

Capacity Generating Classrooms

8 classrooms =	156.6
10 classrooms =	233.3
14 classrooms =	326.6
2 classrooms =	12

Net Square Footage:	72,840 nsf
Support, Structure & Circulation:	37,148 sf

Gross Square Footage: 109,988 gsf

Total capacity: 729





Available Funding (\$ Millions)

Major Construction Bonds	\$40.30
Other ¹	\$0.80
<u>Subtotal</u>	<u>\$41.10</u>
County/School Board Joint Fund	
•APS Funding	\$8.95
•County Funding	\$8.95
<u>Subtotal Joint Fund</u>	<u>\$17.90</u>
<u>Grand Total Funding Available</u>	<u>\$59.00</u>

Notes:

1. Furniture and equipment that cannot be bond funded.

Proposed Design Project Cost (\$ Millions)¹

Construction Costs	\$45.67
Owner (Soft) Costs	\$13.33
<u>Total Project Costs</u>	<u>\$59.00</u>

Proposed Alternatives²

- Photovoltaic (PV) Panel System \$2.40
- TJMS Stair and Façade Modifications \$0.21
- TJMS Canopy and Window Enhancements \$0.16
- Increase Garage Height to 9'-0" \$0.22
- Rainwater Collection System \$0.38

Notes:

1. Based on two independent professional cost estimates
2. Possible scope additions pending outcomes of future estimate

Joint Fund Items¹

1.	Parking Structure	\$12.00
2.	Site Costs not Directly Associated with the New Elementary School	\$2.10
3.	Publically Accessible Restroom(s) at Play Area	\$0.09
4.	Utility Undergrounding	\$0.09
5.	Emergency Responder Network	\$0.18
6.	Allowance for Other Items	\$3.44
	<u>Total</u>	<u>\$17.90</u>

Notes:

1. Includes construction, soft, and contingency costs

NEW ELEMENTARY SCHOOL AT THOMAS JEFFERSON MIDDLE SCHOOL

