

JULY 31 2017

# ABINGDON ELEMENTARY SCHOOL

FCA LISTENING SESSION  
CONSTRUCTION UPDATE



# ≡ PROJECT UPDATE SUMMARY

- 1. Two four-plex relocatables removed, ten to stay in place; Temporary Parking lot in place and in use for summer work, signage installed in use till Summer 2017.**
- 2. Shared parking lot in use, staff should be using hang tags**
- 3. Construction Vehicle parking in use at Fairlington Presbyterian Church**
- 4. New gymnasium complete, new kitchen and cafeteria complete, North classrooms complete, three story and south classrooms; Auxiliary spaces gym to be complete in August 2017.**
- 5. Trade Center access in use, new bus loop in use. foundation work completed.**
- 6. Foundation Monitoring mid point survey completed, will be distributed shortly.**
- 7. Community Liaison: Renee Adams**

# PHASING OVERVIEW: MAJOR SCOPE

May 27<sup>th</sup> 2016: Anticipated Notice to Proceed (NTP) for the Project as a whole

Phase 1: Pre-mobilization by the Contractor, work to be completed by APS (Tree removal, Relocatables).

Phase 2A: Summer 2016

- *Temporary parking lot installed*
- *New Power / Water services*
- *Relocatables installed*
- *New bus loop installed*

• *5 Kindergarten rooms renovated: Now Phase 4*

Phase 2B: Winter 2016

- *New Kitchen & Cafeteria*
- *Classrooms & office space renovated*

Phase 2C: Spring 2017

- *New Gymnasium completed*
- *Classrooms & office space renovated*

Phase 2D: Summer 2017

- *New 3 story building completed*
- *Classrooms & office space renovated*

Phase 3: Summer 2017

- *New Administration area completed*
- *Classrooms & office space renovated*

Phase 4: Summer 2017

- *Media Center*
- *Classrooms & office space renovated*

Phase 5: Summer / Fall 2017

- *Classrooms & office space renovated*

Phase 6: Fall 2017

- *Relocatables / Temporary Parking removed*
- *New Track and field completed*
- *Site work completed*

*Note: Work will continue beyond start of school year*

# ≡ PROJECT UPDATE SUMMARY

- **SUMMER 2017:**

- The following will be completed for School Opening In September 2017:

- New three story addition.
- New school entry and administration area.
- Kindergarten classrooms
- New School blacktop and landscaped play areas
- Majority of the storm water management system

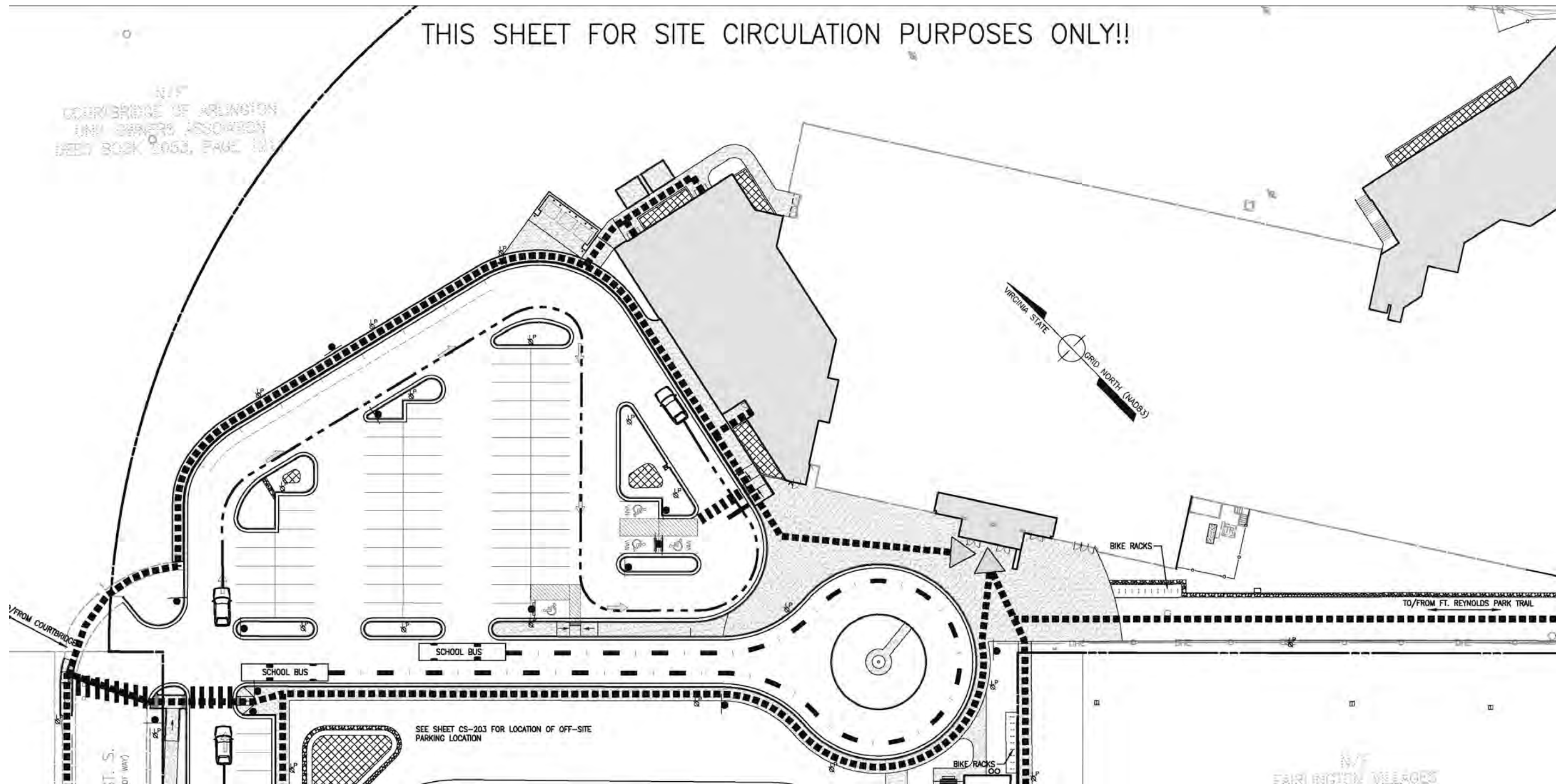
- The four singles and sixplex relocatables will be on site: mid - end of September

# ≡ PROJECT UPCOMING EVENTS

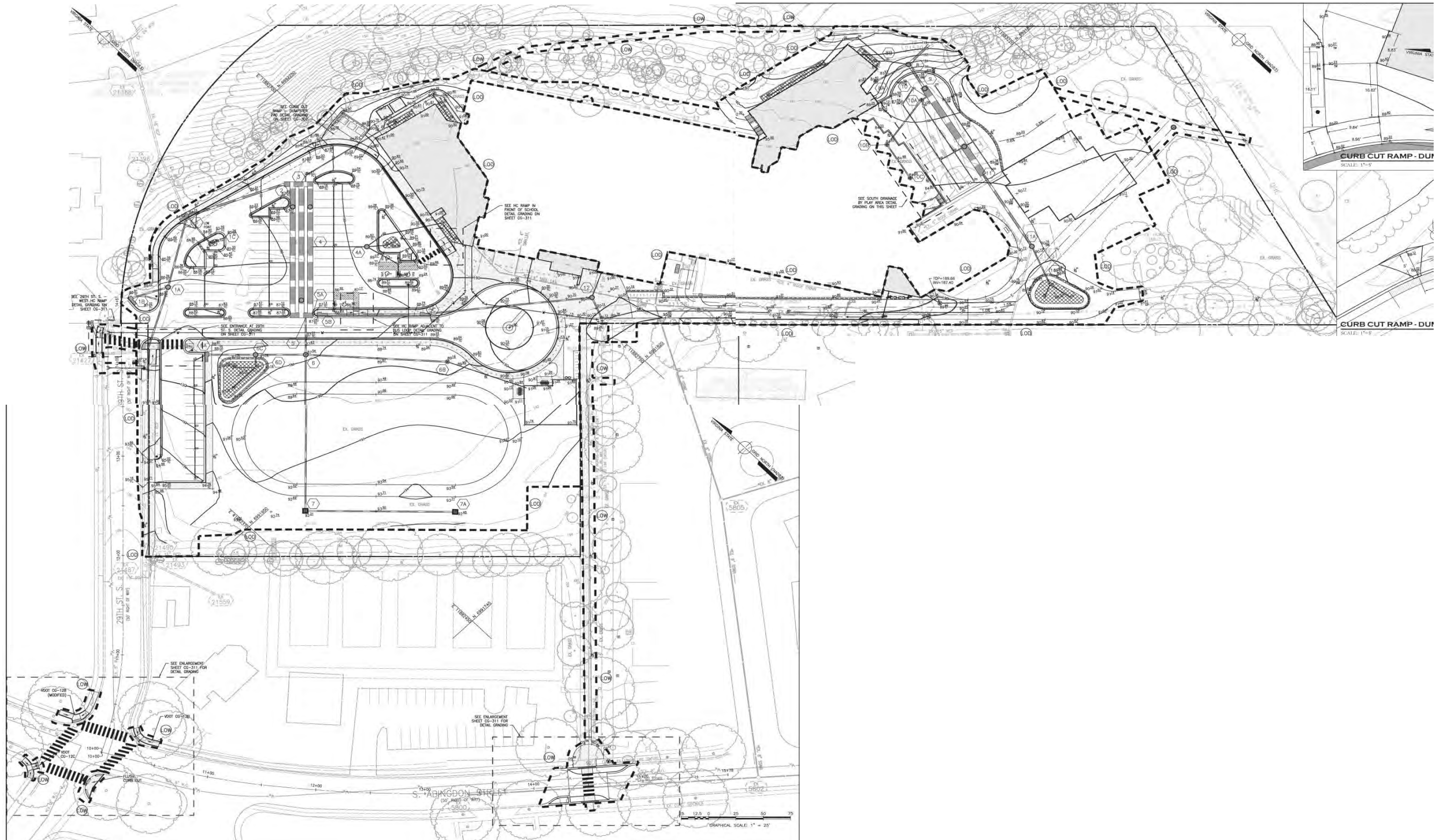
- **Roadwork improvements**
  - Handicap ramps and raised crosswalk at S. Abingdon Street
  - Handicap ramps and crosswalk at 29<sup>th</sup> and S. Abingdon Street
  - Handicap ramps and new sidewalk and street lights on 29<sup>th</sup> Street
  - New sidewalk and sidewalk lights at Paper Street (pedestrian access to the school).
  - New streetlights at 31<sup>st</sup> Street trail
- **New Streetlights on 29<sup>th</sup> street**
- **New school main parking lot.**
- **New School roofing work**
- **Gym relocatable will be removed**
- **Field work will start but will not be completed till the fall.**

# VEHICULAR & PEDESTRIAN CIRCULATION

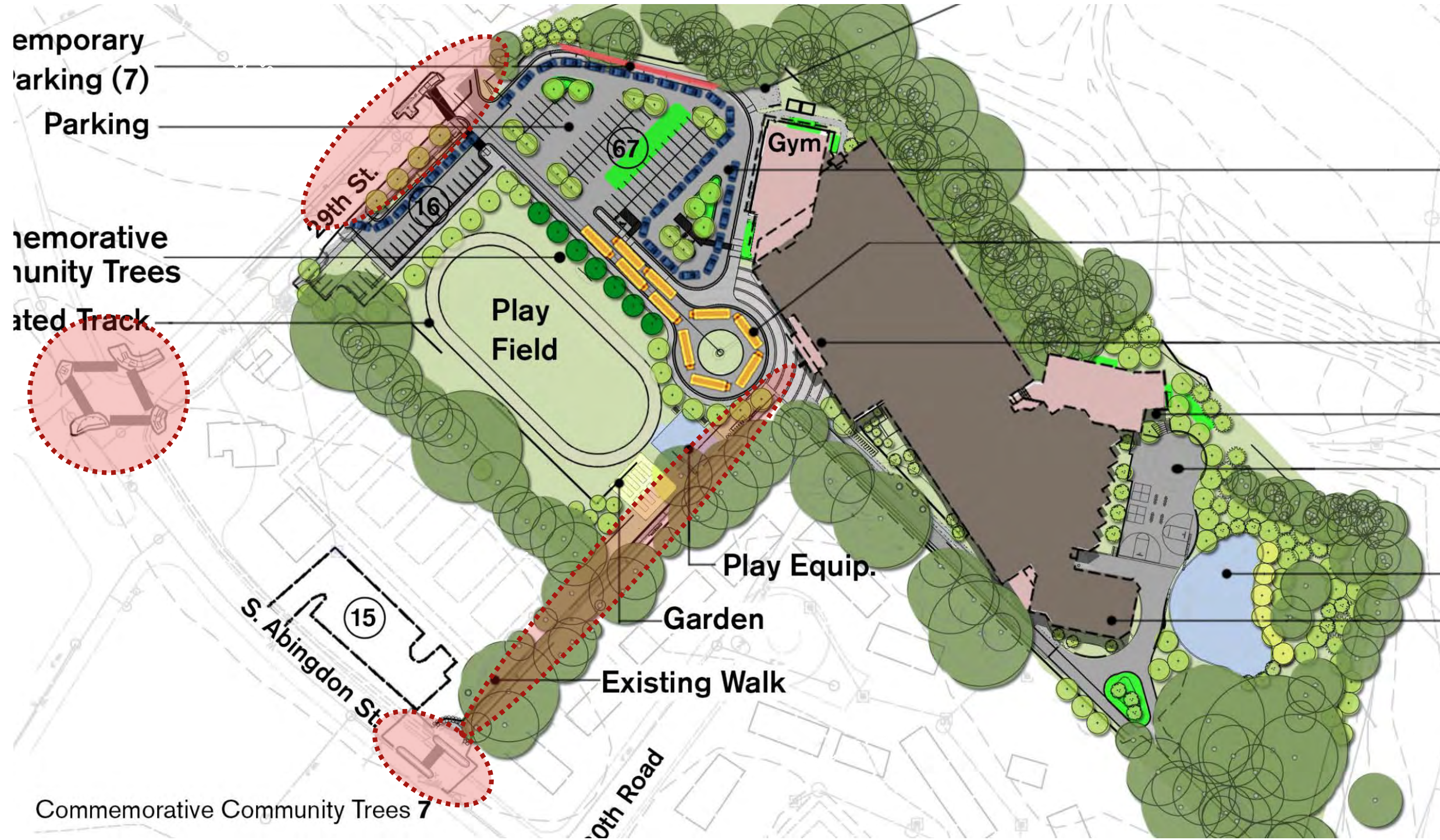
THIS SHEET FOR SITE CIRCULATION PURPOSES ONLY!!



# VEHICULAR & PEDESTRIAN SUMMER ROADWORK



# VEHICULAR & PEDESTRIAN SUMMER ROADWORK





# VEHICULAR & PEDESTRIAN SUMMER ROADWORK



Commemorative Community Trees 7



# STORMWATER MANAGEMENT STRATEGIES

- 1 IMPROVED GRADING
- 2 NEW STORMWATER PIPING AND INLETS, INCREASED PIPE SIZE
- 3 NEW UNDERGROUND DETENTION
- BIORETENTION IN PARKING ISLANDS + URBAN PLANTERS ALONG BUILDING FAÇADE
- 4 PERMEABLE PAVEMENT AT TRACK AND IN PARKING STALLS
- 5 NEW CURB AND GUTTER + SIDEWALK ALONG HILLSIDE
- 6A TREES TO BE REMOVED OUTSIDE L.O.D. - TREE STUMP TO REMAIN
- 6B TREES TO BE REMOVED
- 7 15' OF SOD AND STAKE FROM NEW SIDEWALK DOWN HILLSIDE



# SITE PICTURES



# NEW SCHOOL ENTRY



# SITE PICTURES



# SITE PICTURES



# SITE PICTURES



# SITE PICTURES:





# NEW GYMNASIUM & STAGE



# NEW CAFETARIA & KITCHEN



# NEW ADDITION



## CONSTRUCTION TEAM & COMMUNITY LIASON :

The logo for HESS, featuring the word "HESS" in a bold, grey, sans-serif font. A small green square is positioned between the "E" and "S".The logo for HEERY, consisting of the word "HEERY" in white, uppercase, sans-serif font centered within a solid purple square.The logo for hord | coplan | macht, featuring the words "hord | coplan | macht" in white, lowercase, sans-serif font centered within a solid red rectangle.

- **Architects: Hord Coplan Macht**
- **General Contractors: HESS Construction + Engineering Services**
- **Construction Manager: HEERY International**
- **Community Liaison:**
  - **Renee Adams: Project Manager HEERY International**
  - **Email: [radams@heery.com](mailto:radams@heery.com) Tel: 202.510.6213**
  - **Aji Robinson: Project Manager APS**
  - **Email: [ajibola.robinson@apsva.us](mailto:ajibola.robinson@apsva.us) Tel: 703.228.7738**



# SITE PLAN

Temporary  
Parking (7)  
Parking

Dumpsters

Commemorative  
Community Trees  
Relocated Track

Car Drop-Off  
Bus Drop-off/Service  
Building Entrance

29th St.

Gym

Play Field

Outdoor Classroom  
Paved Play Area /  
Fire turnaround



Play Equip.

Play Equip.  
Cafeteria/  
Loading Area

S. Abingdon St.

Garden

Existing Walk

- Additions
- Pedestrian Paving
- Parking/Drives/  
Paved Play Area
- Play Area
- Play Field
- Existing Garden
- Outdoor Learning
- Storm Water Management
- Drop - Off
- Existing trees
- Proposed trees
- Transplanted trees

- Commemorative Community Trees 7
- Buses Queuing On-Site 10
- Cars Queuing On-Site 32



30th Road

Existing Walk  
from 31st St.

83 parking spaces+15 shared = 98



# FLOOR PLAN



Lower Level

Main Level & Second Level





# EXTERIOR PERSPECTIVE





# EXTERIOR PERSPECTIVE



26 PROJECT SUMMARY

CAFETERIA + CLASSROOM ADDITION





# Thank You



# Questions

