

NEW ELEMENTARY SCHOOL AT THOMAS JEFFERSON MIDDLE SCHOOL



Project Parameters for

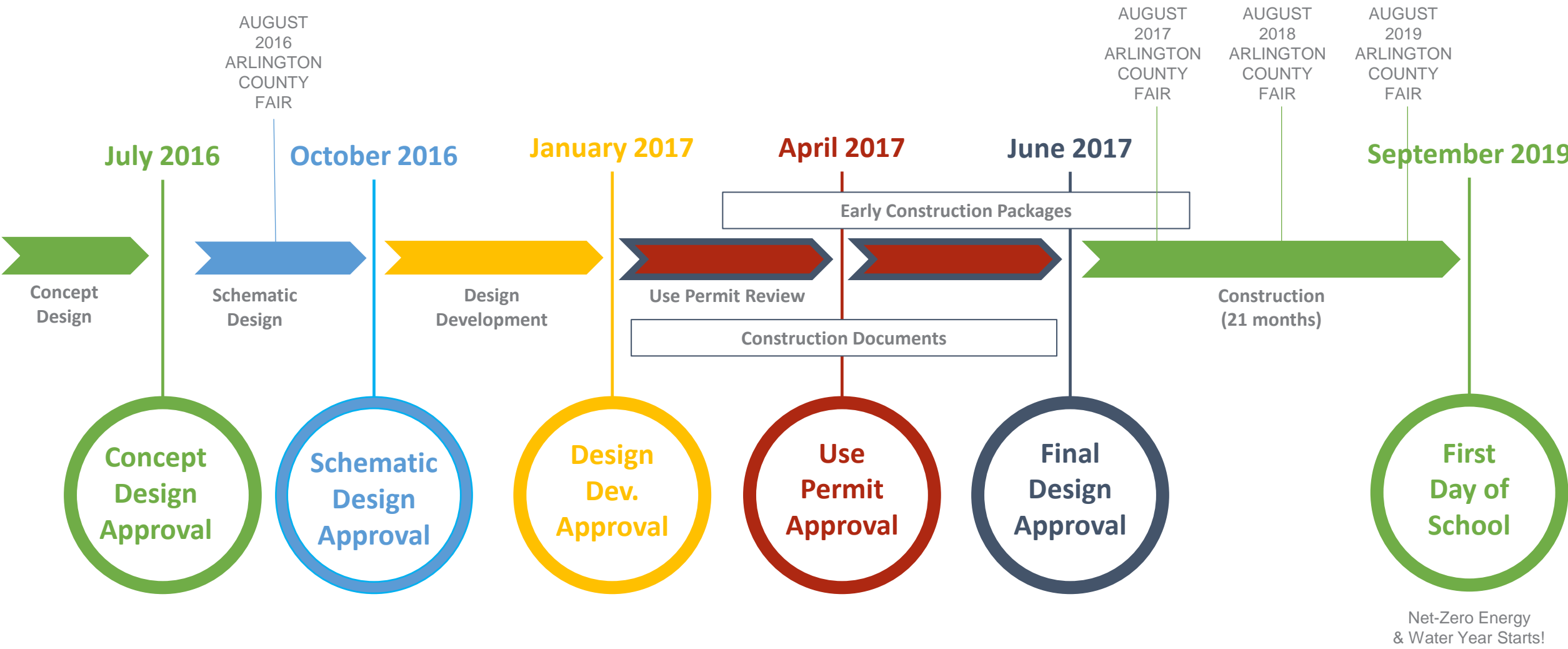
NEW ELEMENTARY SCHOOL AT THOMAS JEFFERSON MIDDLE SCHOOL

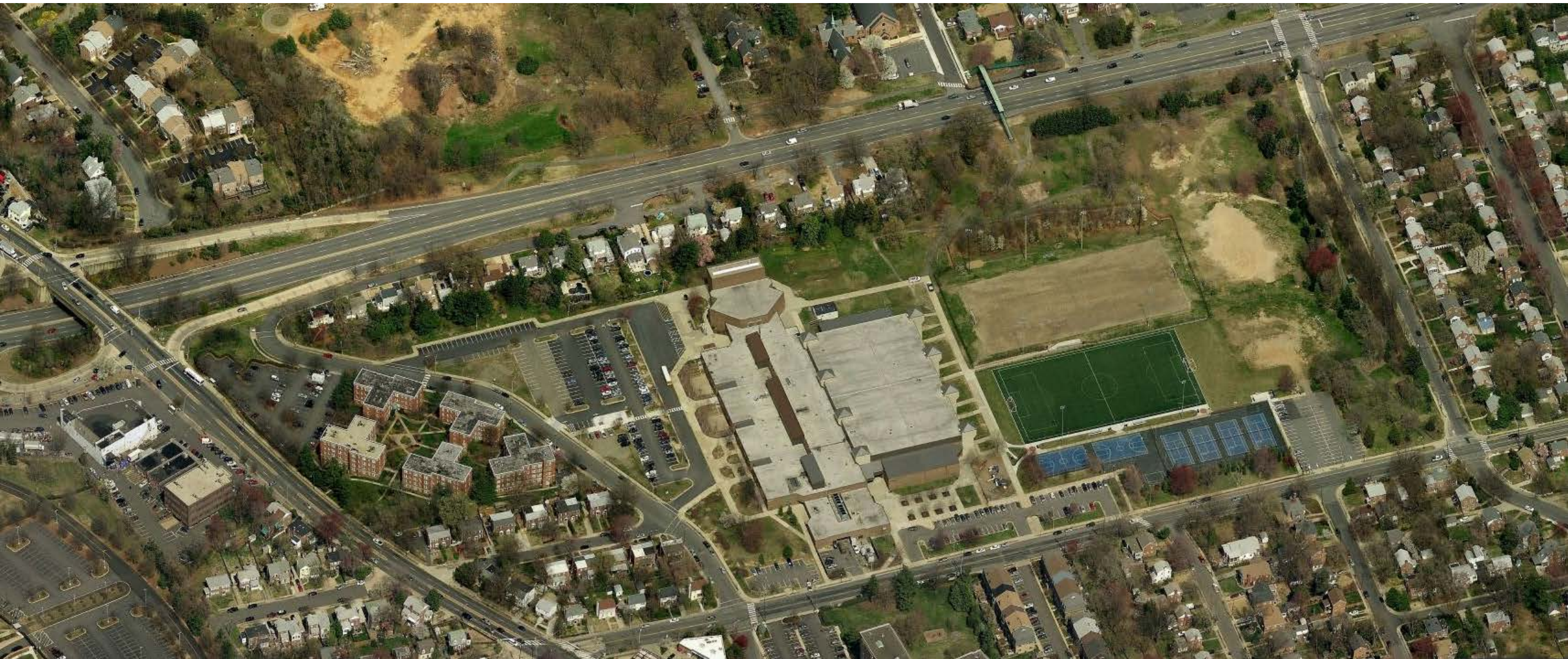
1. New Elementary School for the Henry Community
2. Support Strategic Plan Goal #4 – Provide Optimal Learning Environments
3. Address capacity by providing at least 725 seats
4. Open by start of school year 2019
5. Multi-story building in northwest corner of site
6. Structured parking
7. Project cost \$59 million

Project Chronology | Timeline

October 2012	FY 2013-2022 CIP identifies Kenmore site as the location of a new elementary school
June 2014	FY 2015-2024 CIP identifies Jefferson site as preferred location for a new elementary school
September 2014	County Board appointed TJWG begins
January 2015	TJWG issues Final Report and County Board decides “not now” to a new elementary at the Jefferson site
June 2015	School Board appointed SAWG begins
November 2015	SAWG issues Final Report including a preference to build a new elementary school for Henry at Jefferson
December 2015	School and County Board approves Jefferson as the site for a new elementary school
March 2016	School Board approves first three preferences of the SAWG
April to September 2016	BLPC & PFRC input during Concept and Schematic Design phases
November 2016	Use Permit submission
April 2017	Use Permit approval
July 2017	Estimated start of construction
September 2019	School Opening

General Schedule | Timeline









Overall existing site plan



Overall proposed site plan



SUPPLEMENTAL INFORMATION FOR USE PERMIT

SCALE:

VMDO

VMDO Architects
200 E. Market Street
Charlottesville, VA 22902
434.296.3684
vmdo.com

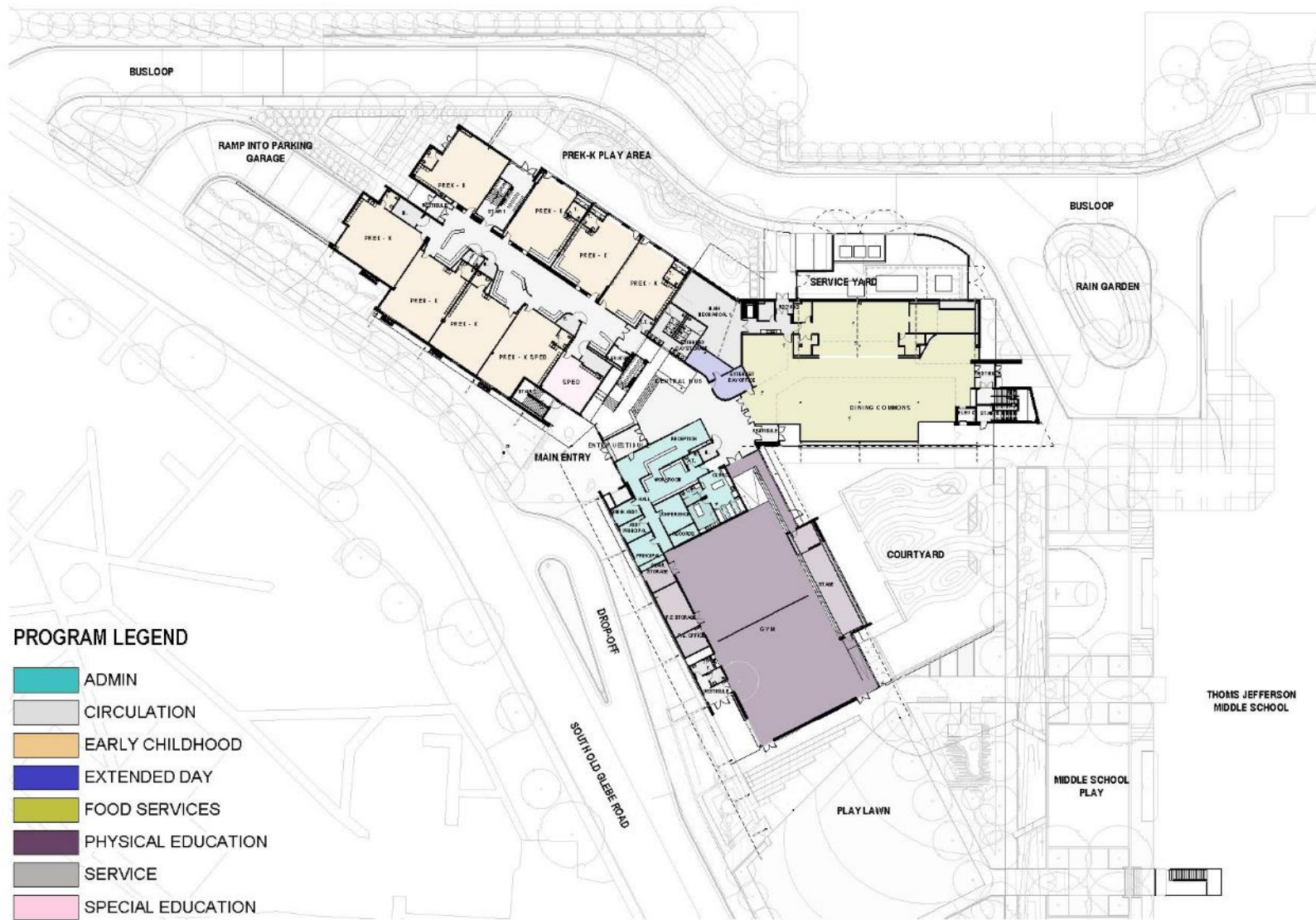
NEW ELEMENTARY SCHOOL AT THOMAS JEFFERSON MIDDLE SCHOOL

125 South Old Glebe Rd
Arlington, VA 22204

VMDO Proj. No.: 1152

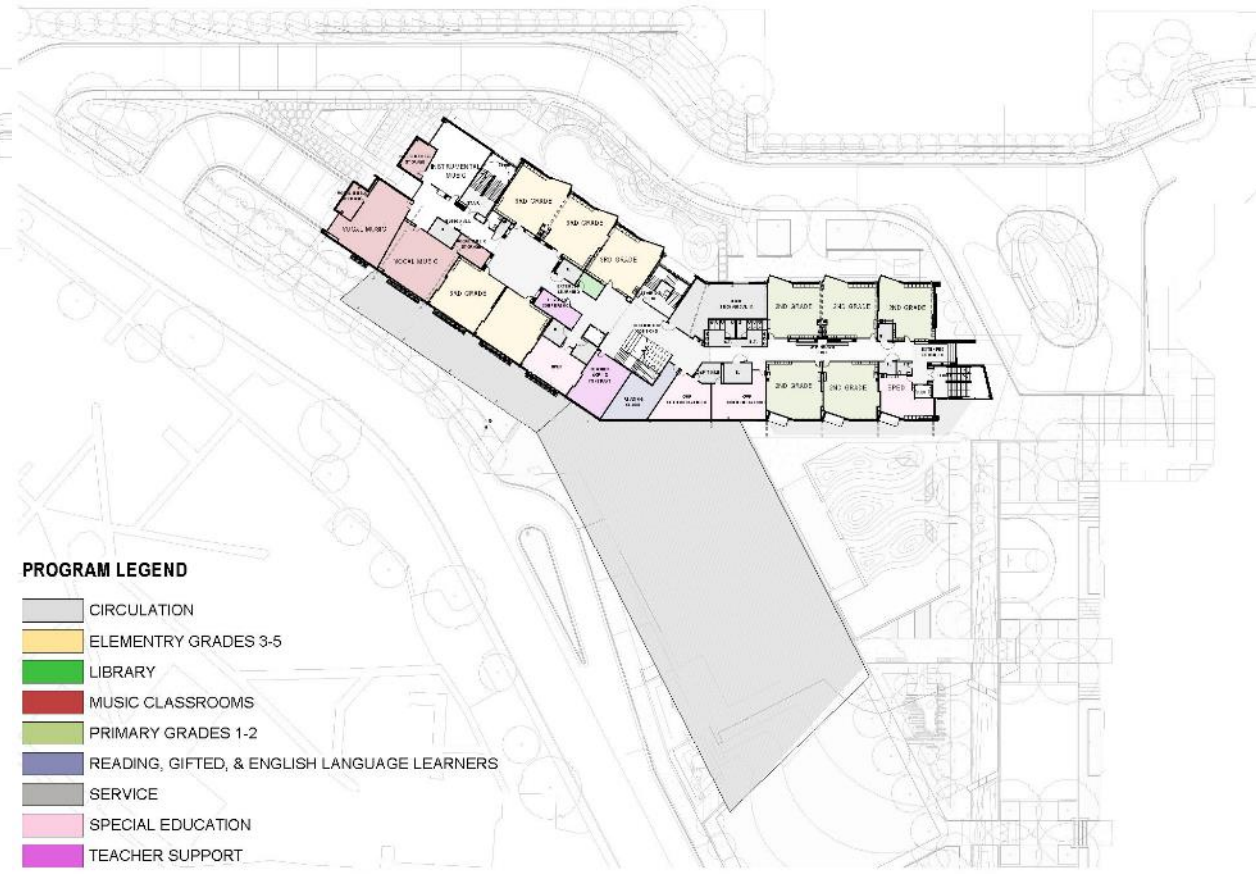
Drawn By:
Date:

2
Author
03/29/17

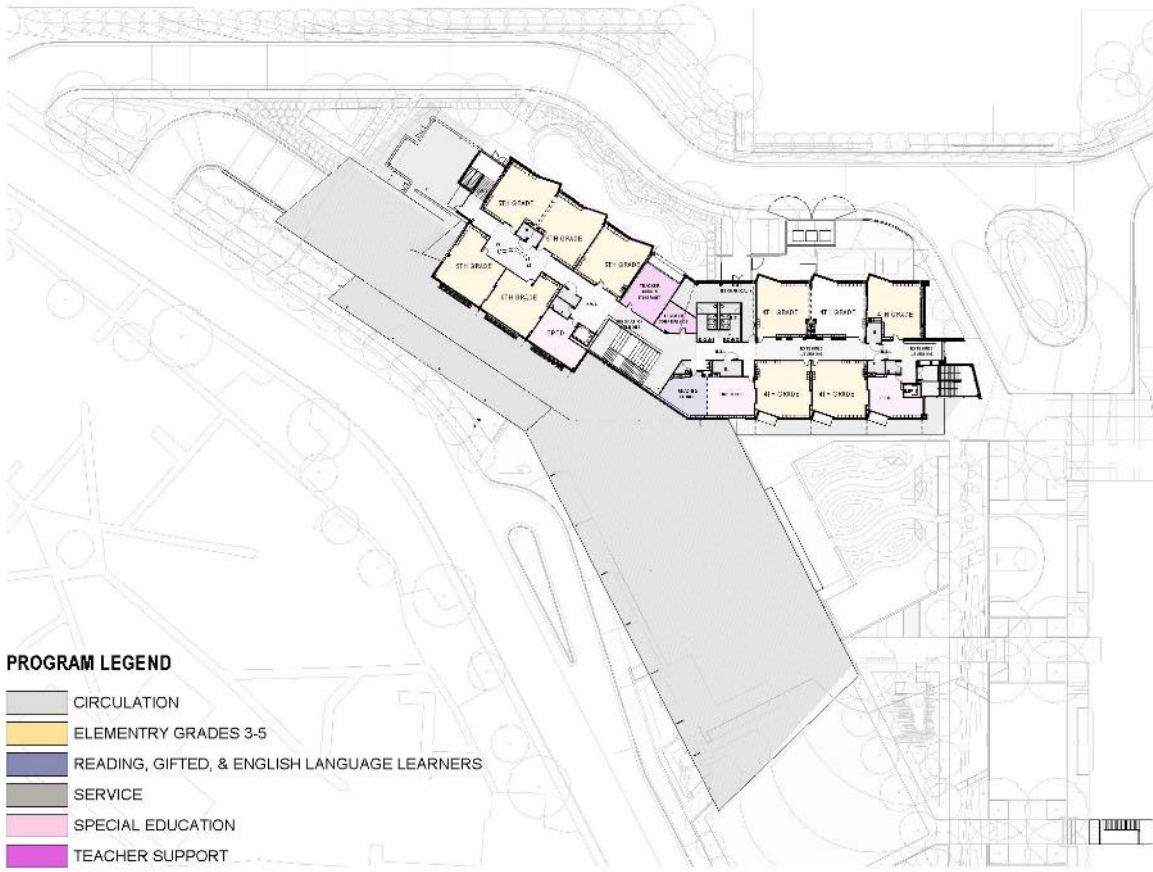




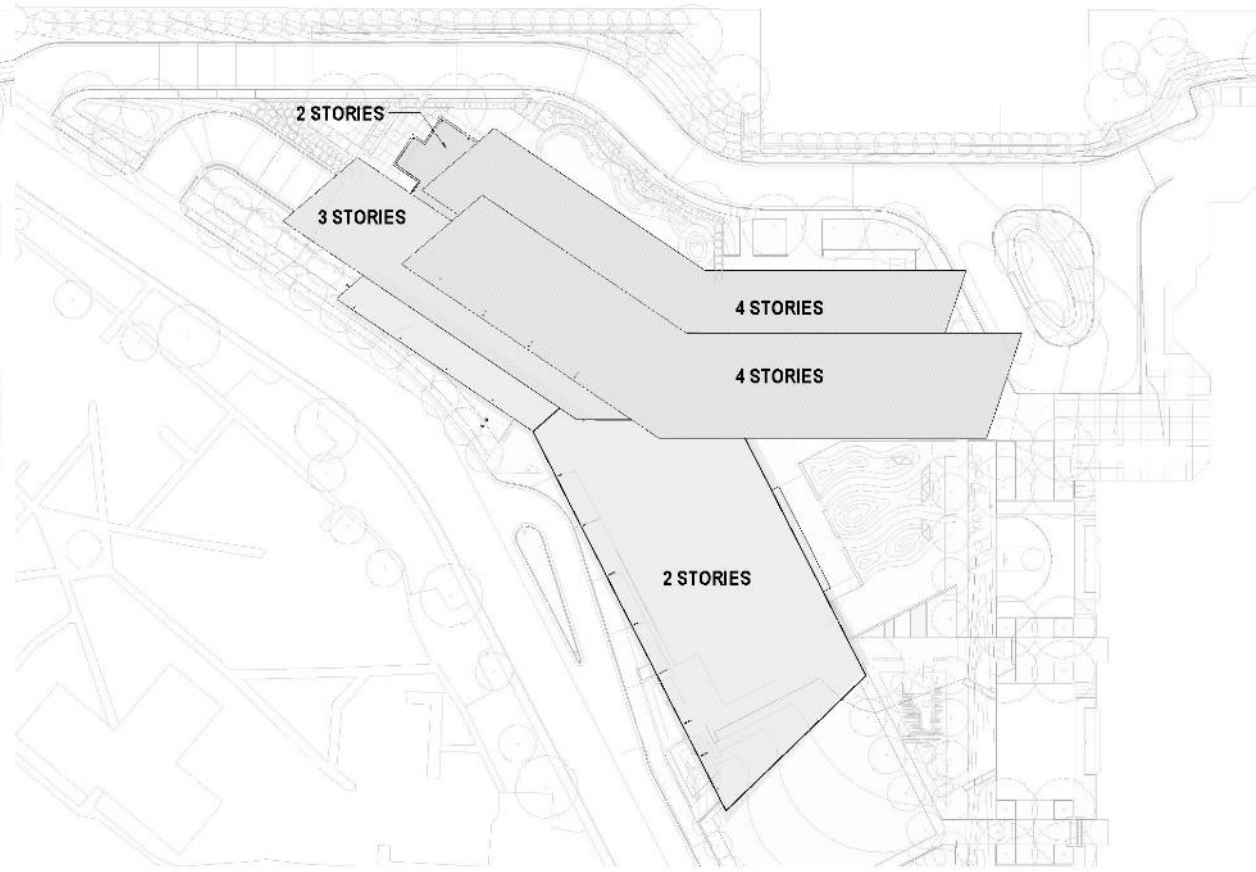
Second floor



Third floor



Fourth floor



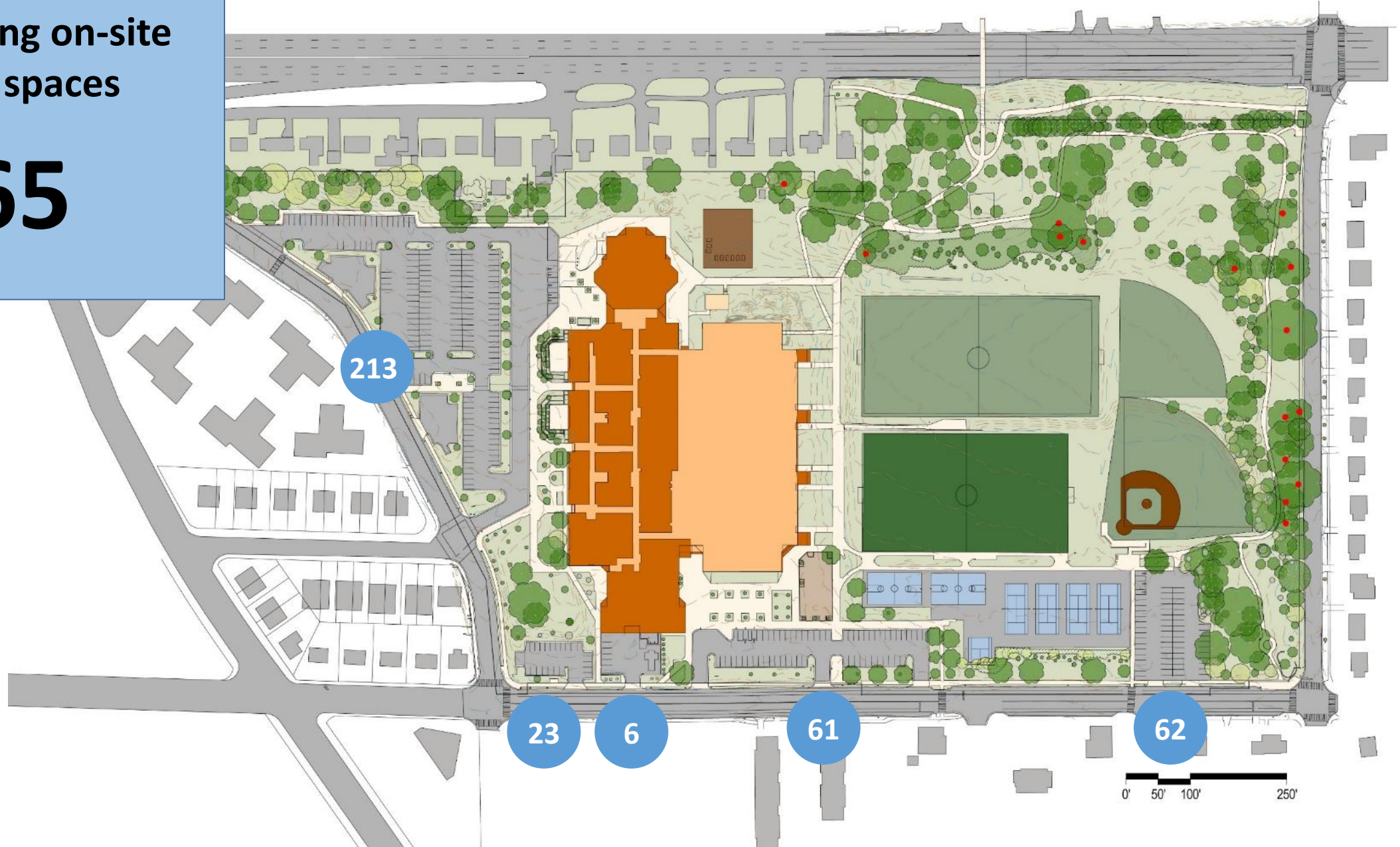
Roof

Transportation Analysis Summary

- Parent, student and staff travel surveys
- Estimated future parking demand
- Location of on-site transportation facilities (e.g., accessible walkways, bus and parent pick-up and drop-off)
- Traffic analysis, speed and crash study around school site
- Off-site infrastructure improvements to support safe access and circulation for all travel modes
- School programs that support more walking, biking, carpooling, bus and transit use

Total existing on-site
parking spaces

365



Parking Requirement, Arlington County Zoning Code

Parking Requirements (Zoning Code):	
Middle School	173
Elementary School	119
Total APS Requirement	292

Assumption: Peak parking demand for community uses on site (i.e. community center, theater) does not overlap with peak demand for school uses. Thus, separate zoning requirements for those uses are not included in this total.

Parking Demand

Based on User Surveys & Parking Lot Counts

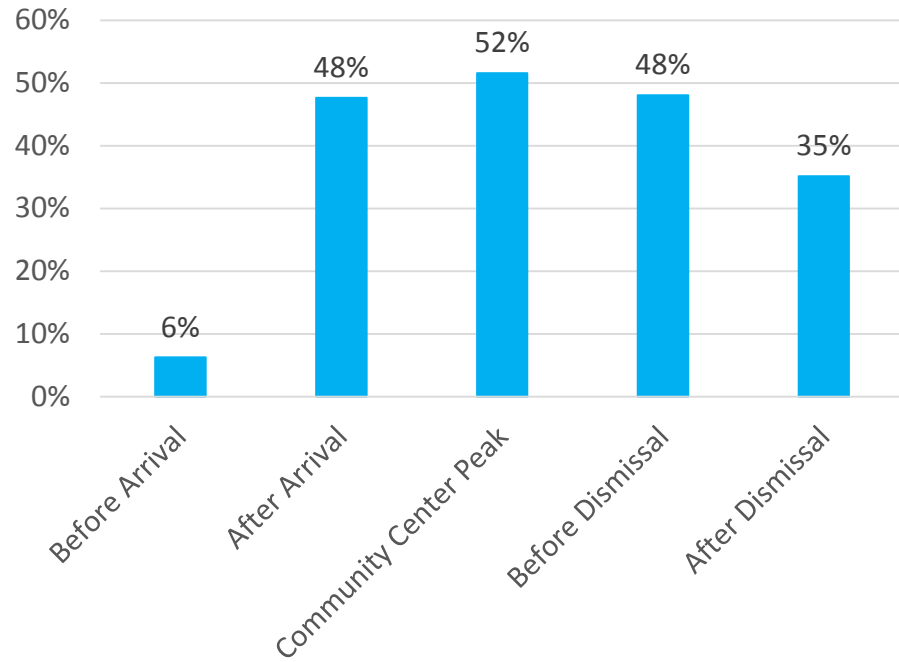
Parking Demand	
Middle School Staff & Visitors	139
Elementary School Staff & Visitors	129
Total APS Demand¹	268
Available on-street parking adjoining site ²	18
Parking Spaces Needed On Site	250

¹ Assumes some reduction in driving based on TDM measures already in place for staff.

² The Arlington County Zoning Code allows for reductions in parking based on TDM measures and available on-street parking, located on the block faces adjoining the site.

Existing Conditions-Parking Counts

Occupancy of Lots

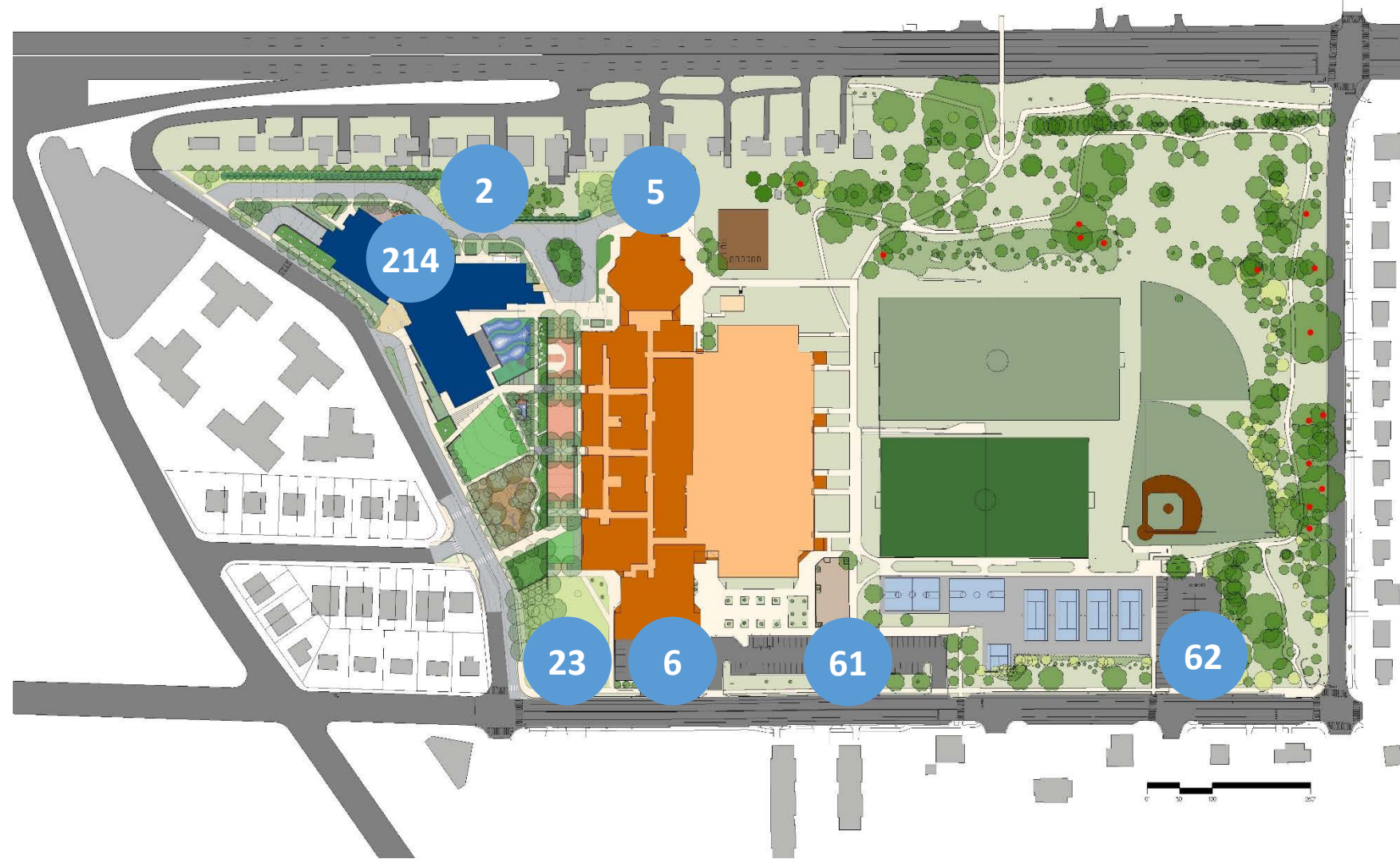


*Shows parking before dismissal (~1:10PM) on a typical day

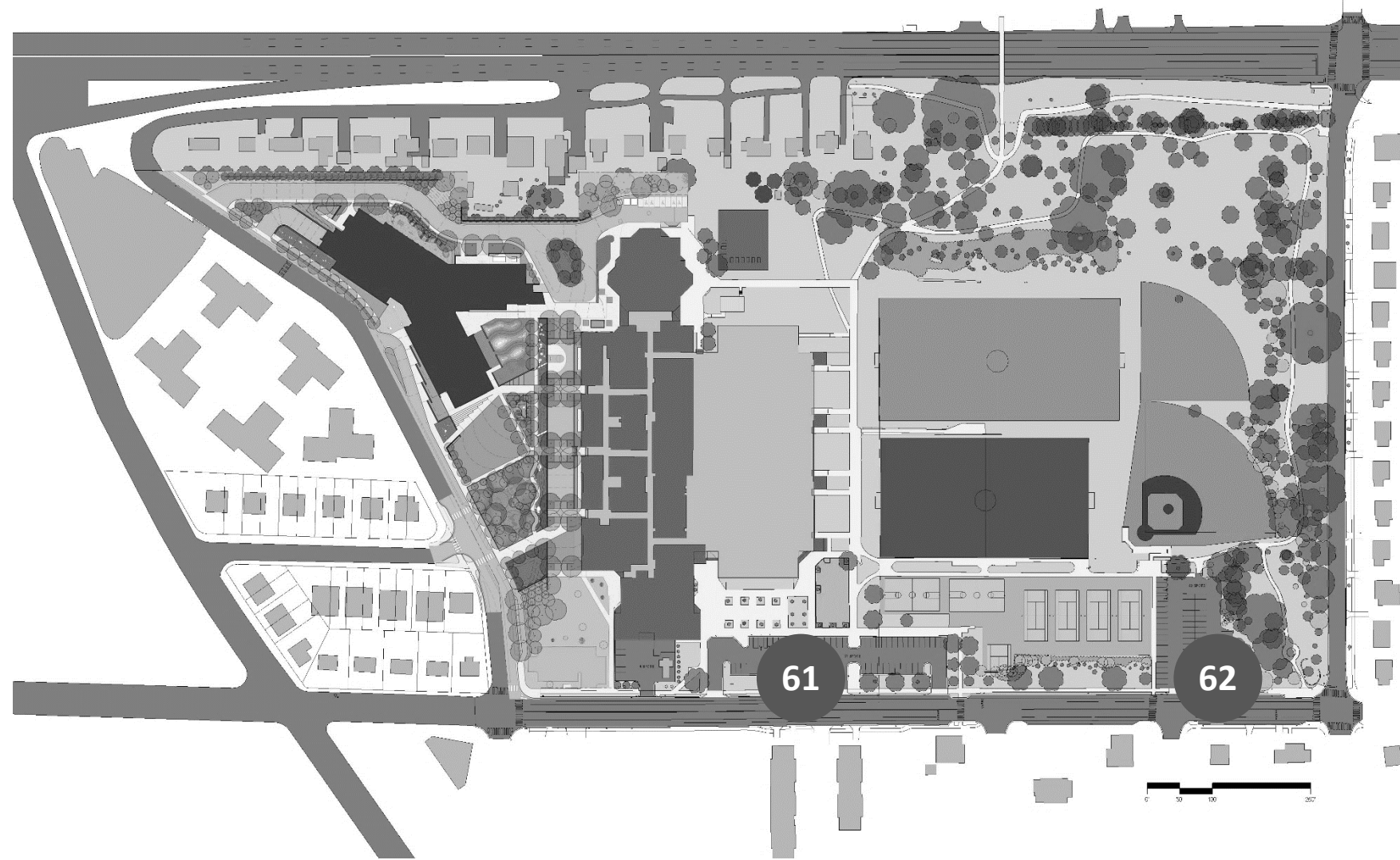


Total proposed on-site
parking spaces

373



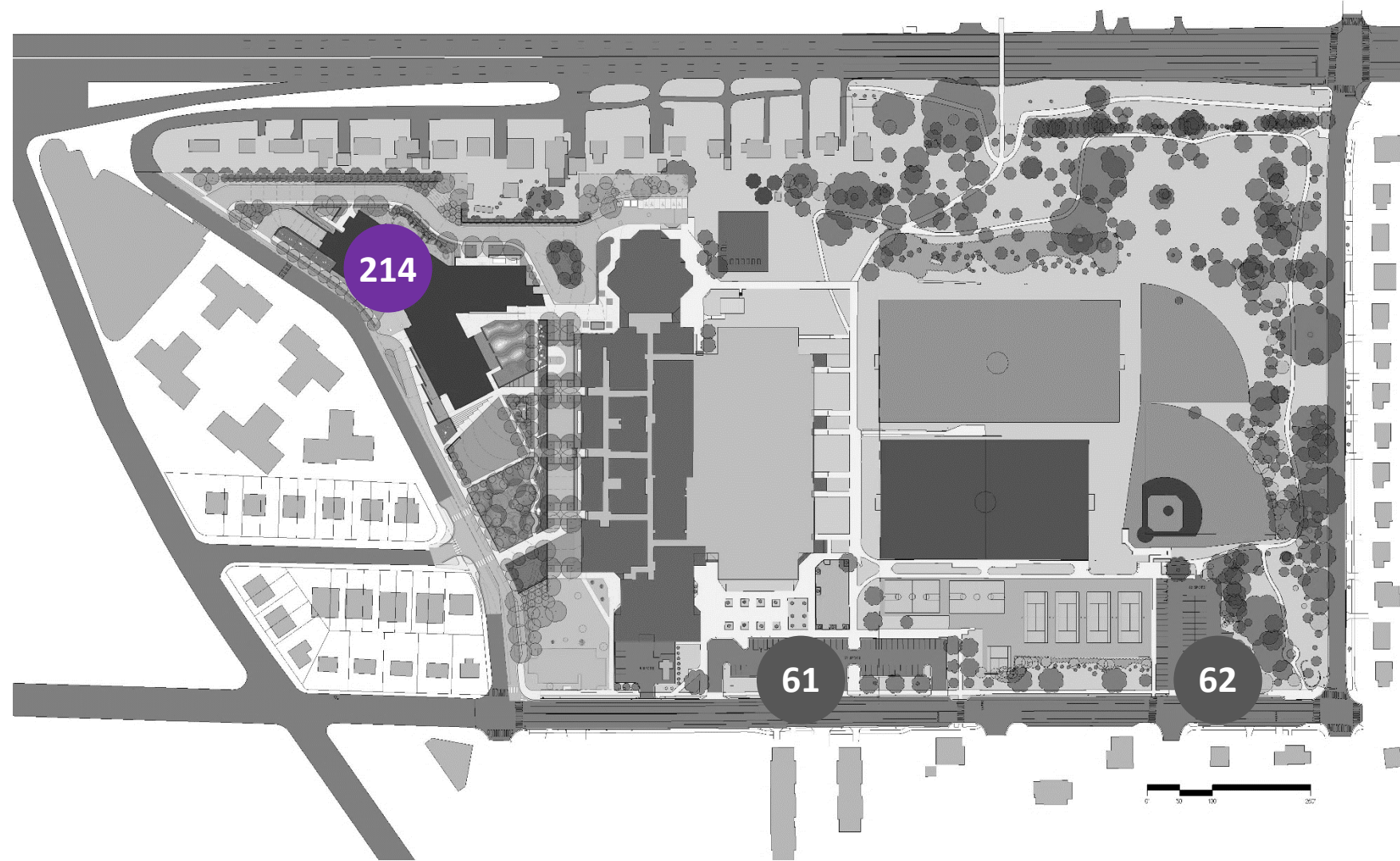
APS Parking Demand:
250 spaces



APS Parking Demand:
250 spaces

APS Proposed Parking
Supply & Occupancy:

214 garage



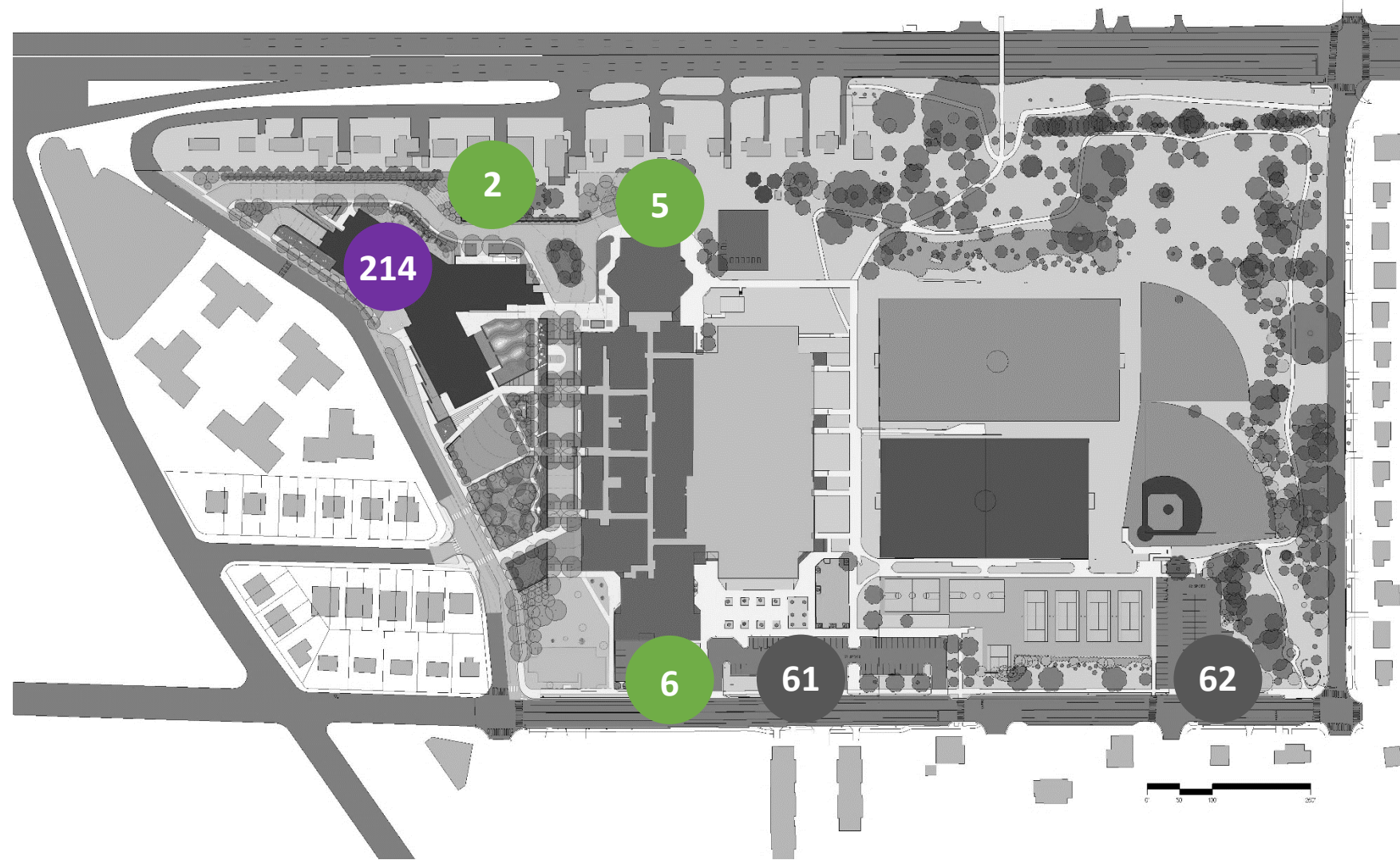
APS Parking Demand:
250 spaces

APS Proposed Parking
Supply & Occupancy:

214 garage

+

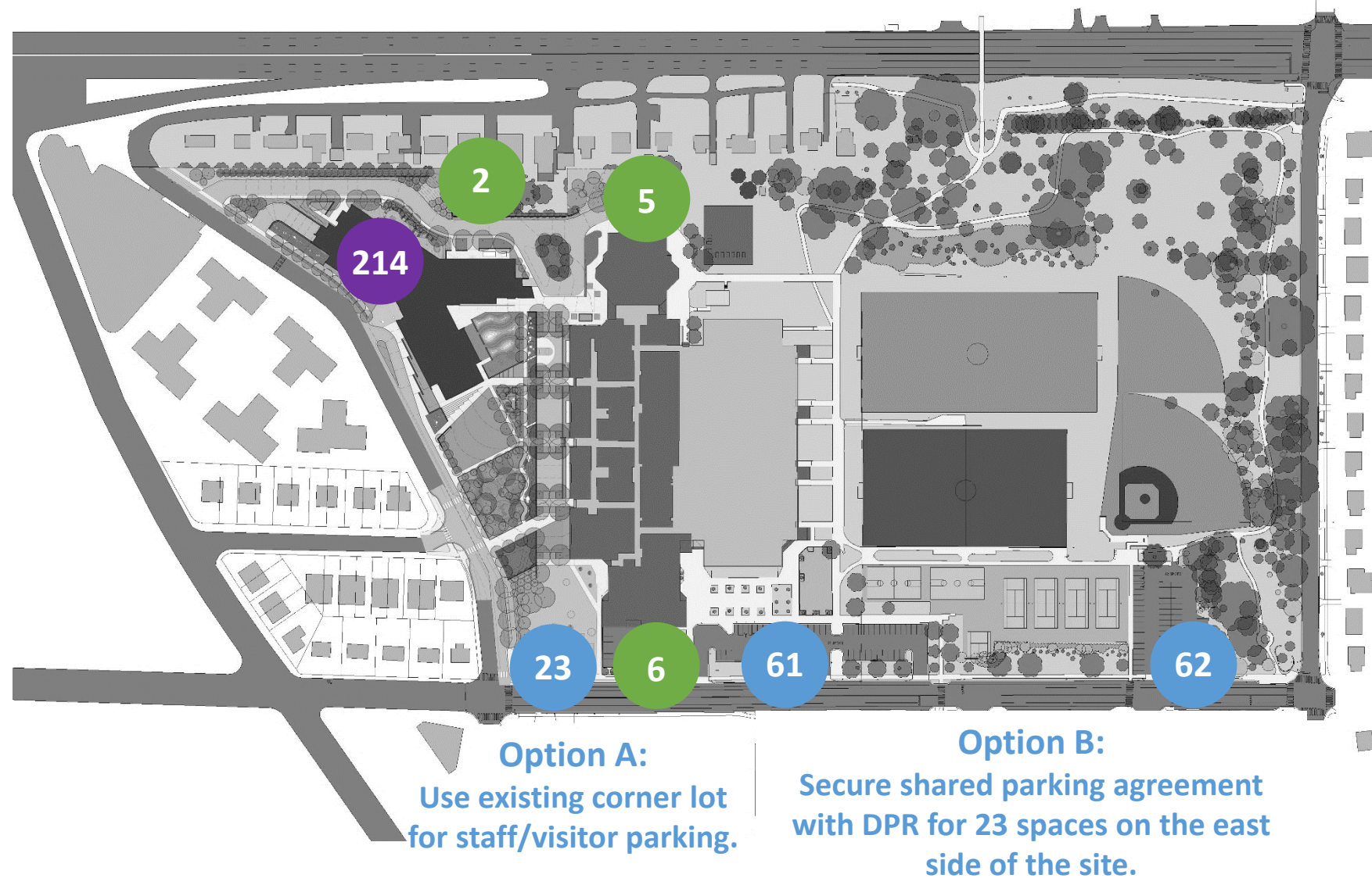
13 surface



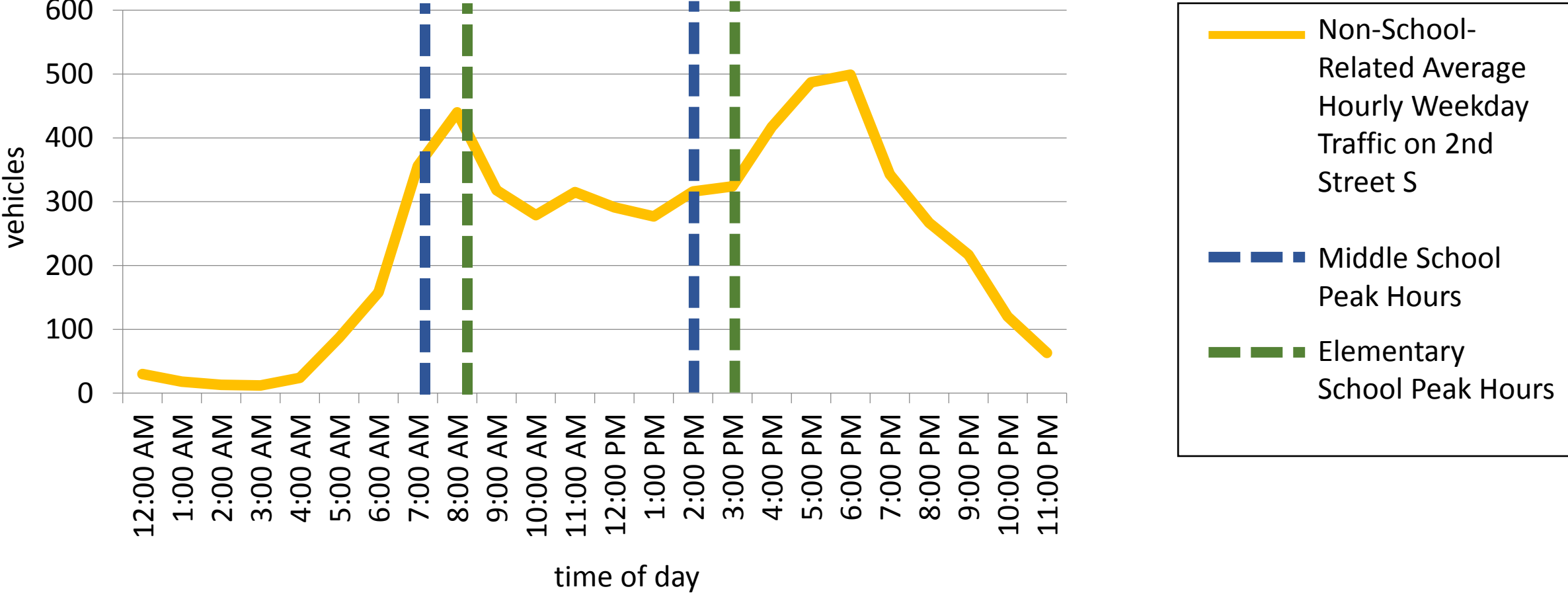
APS Parking Demand:
250 spaces

APS Proposed Parking
Supply & Occupancy:

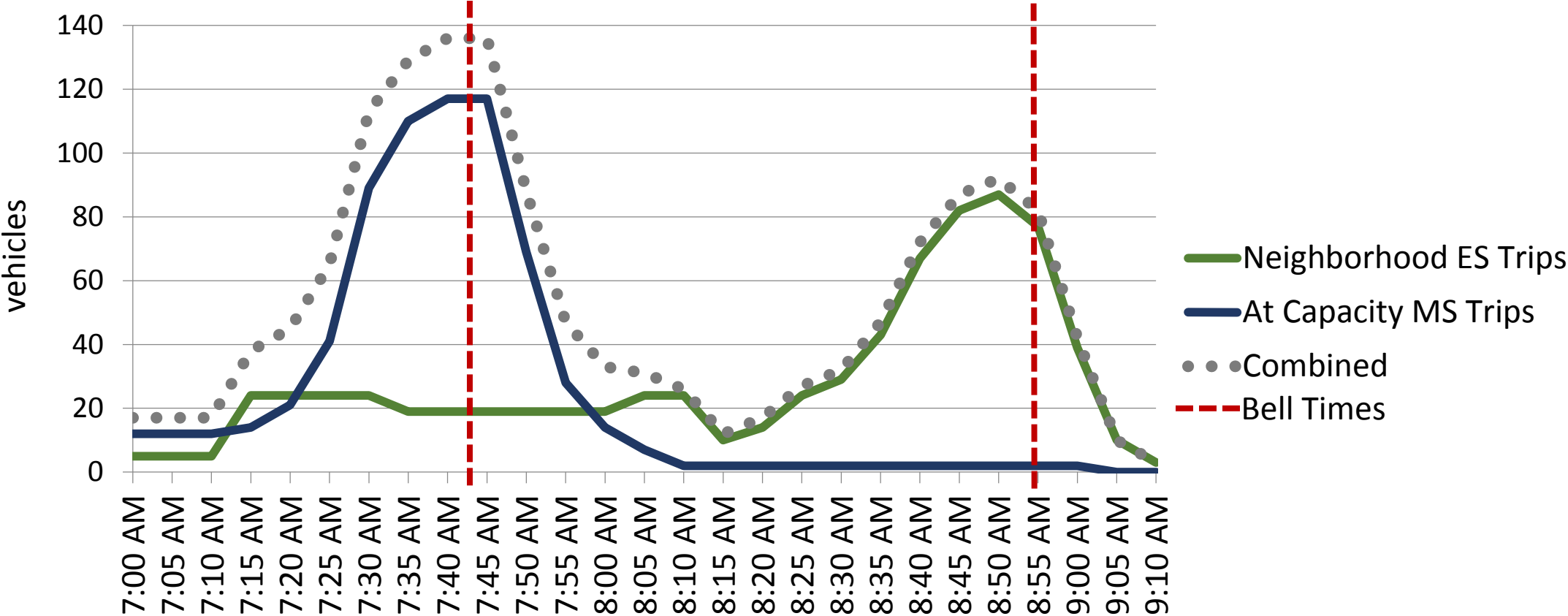
214 garage
+
13 surface
+
23 existing
(option A or B)
=
250 spaces



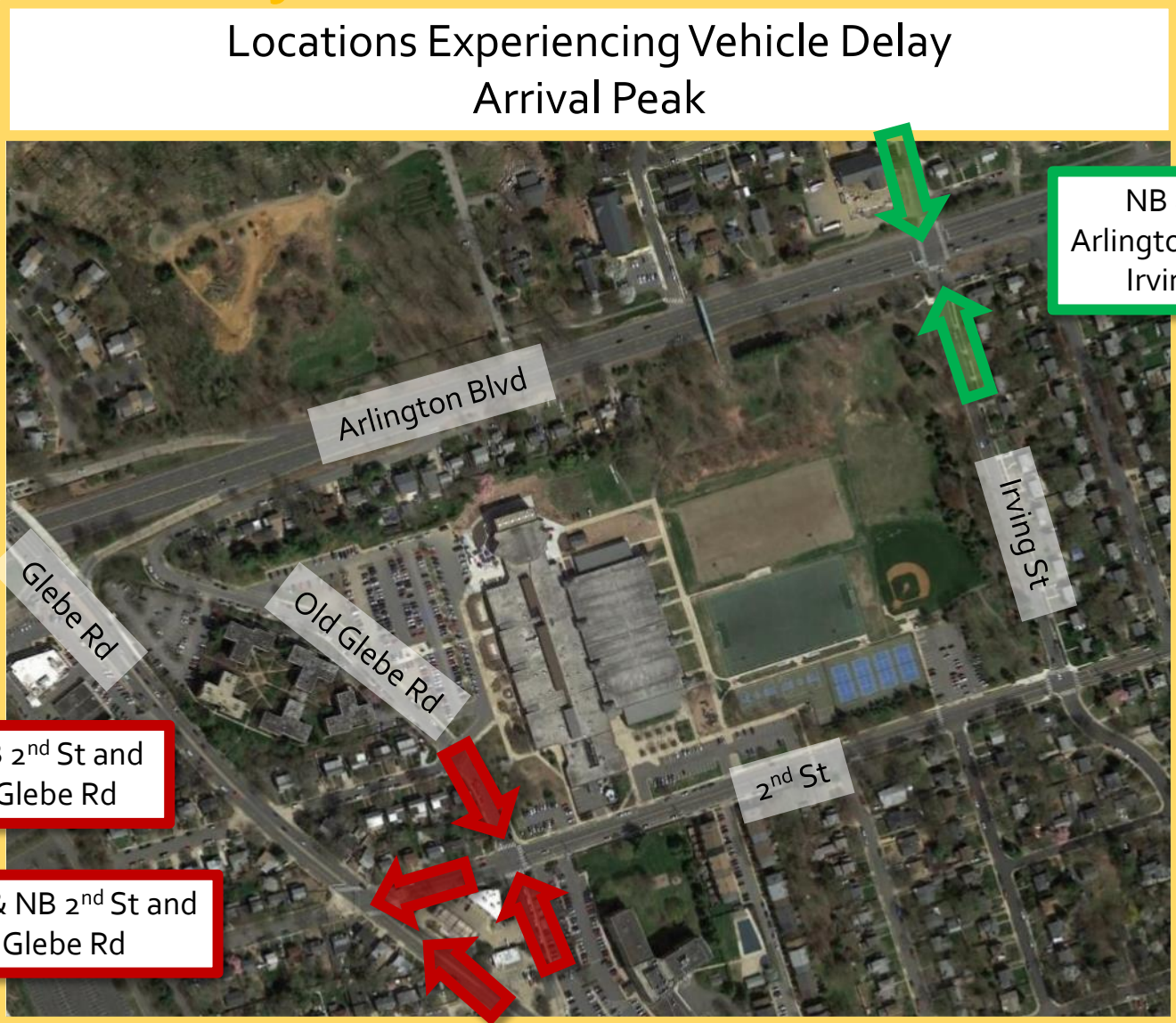
Non-School Related Traffic and School Peak Hours



Middle and Elementary School Traffic Volume: Arrival



Future Traffic Analysis for NES

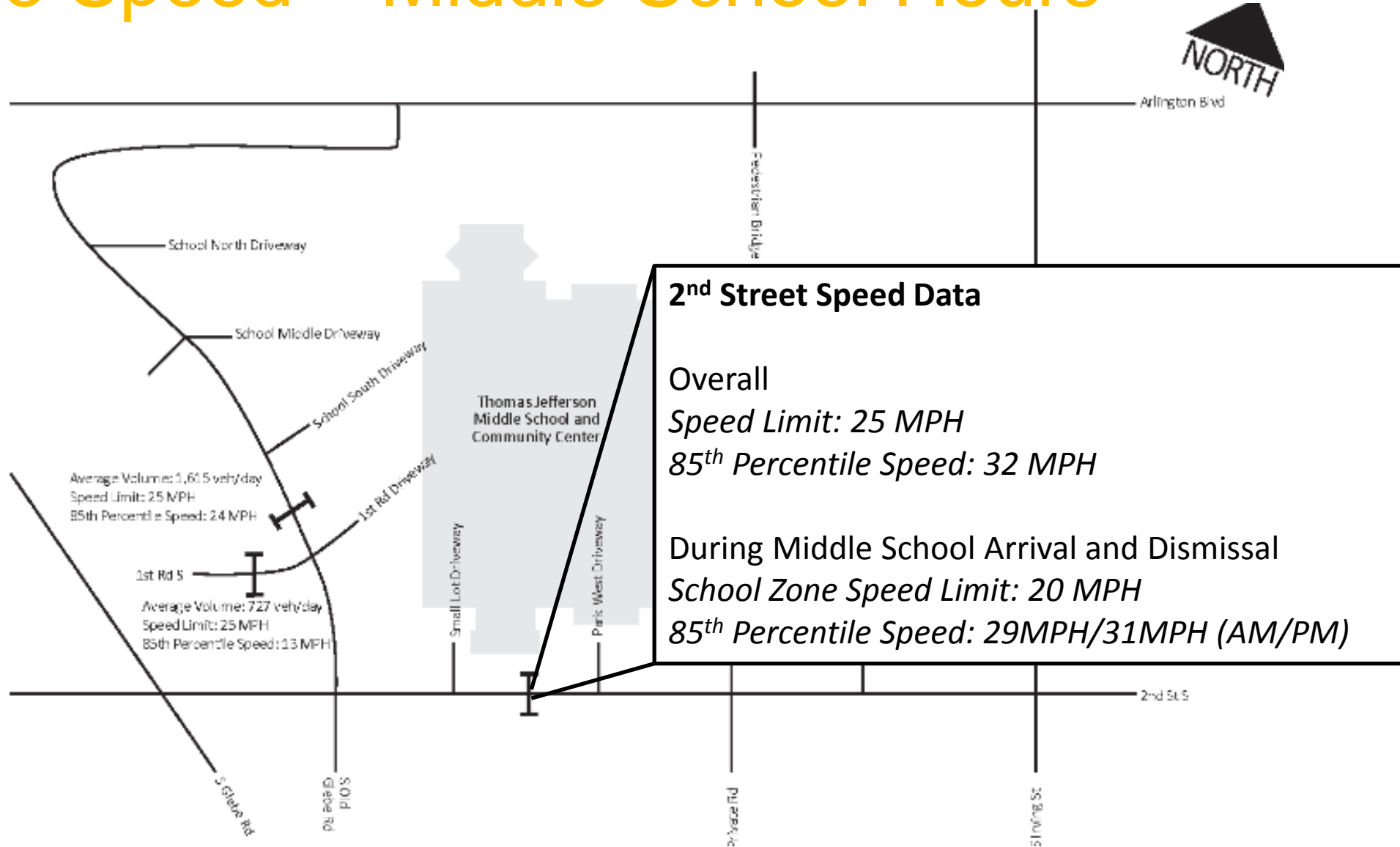


Traffic Crashes



- 3 years of crash data
- Crash data doesn't capture near misses or close calls
- Arlington Blvd and Glebe Road - most crashes typical of high-volume roads
- 7 crashes involved pedestrians
- 2 crashes involved bicycles

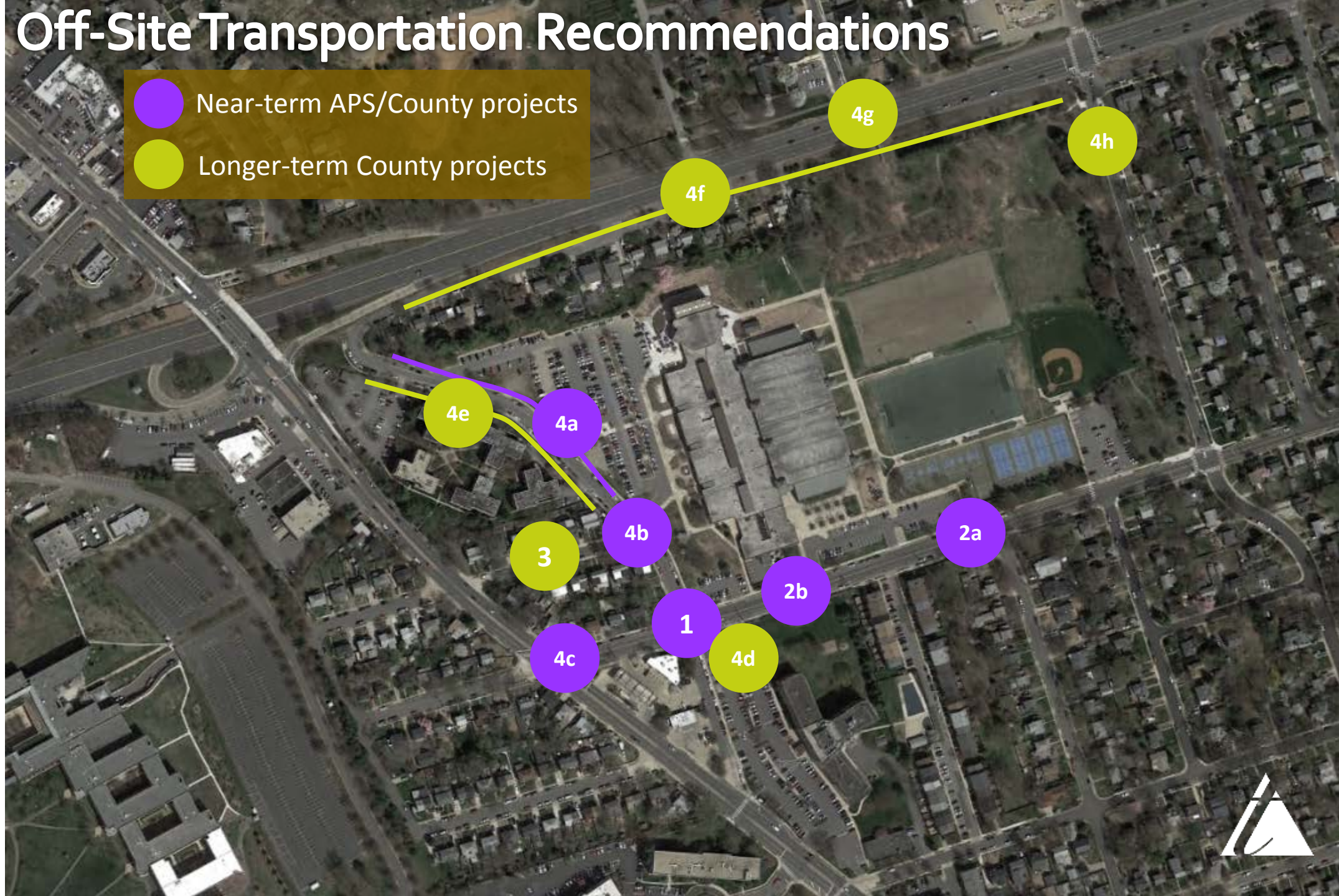


Vehicle Speed – Middle School Hours



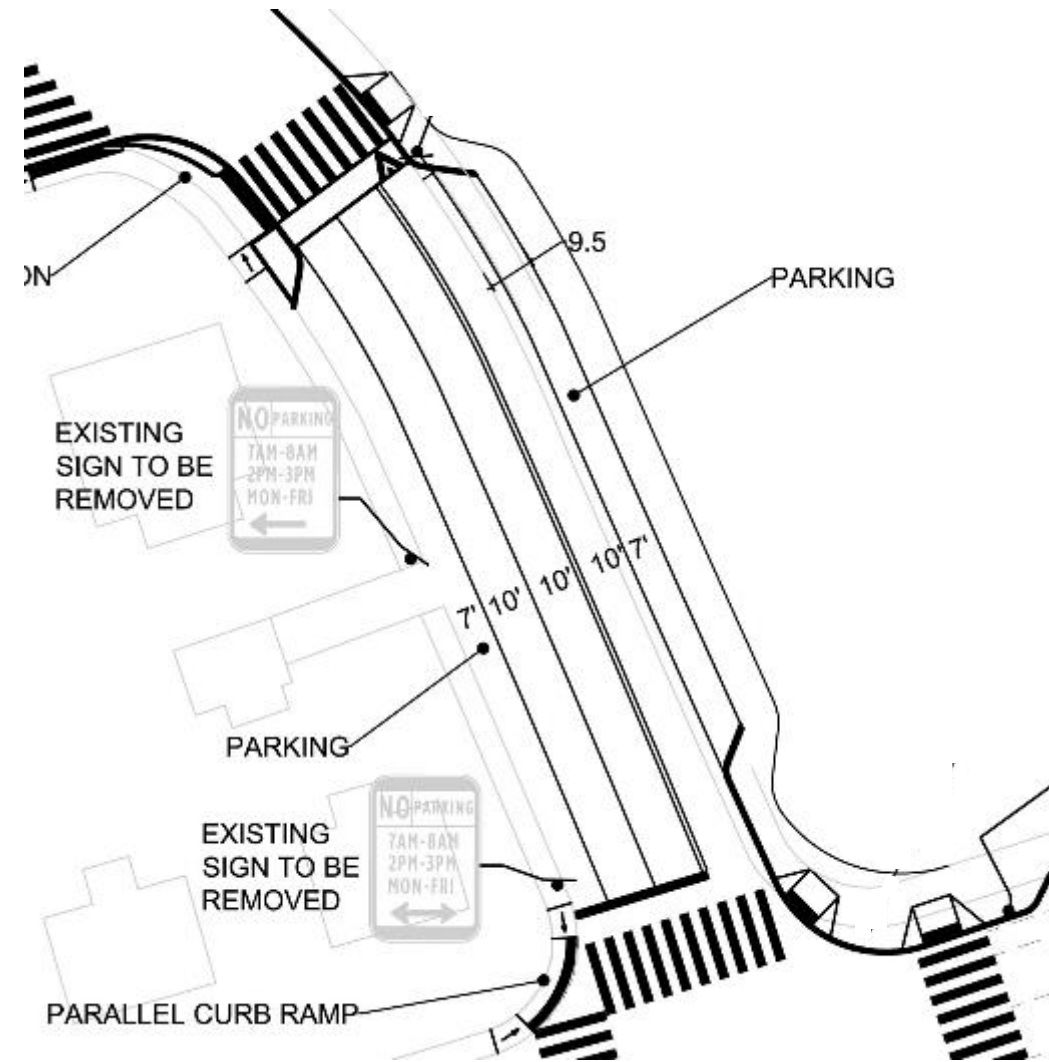
Off-Site Transportation Recommendations

-  Near-term APS/County projects
-  Longer-term County projects



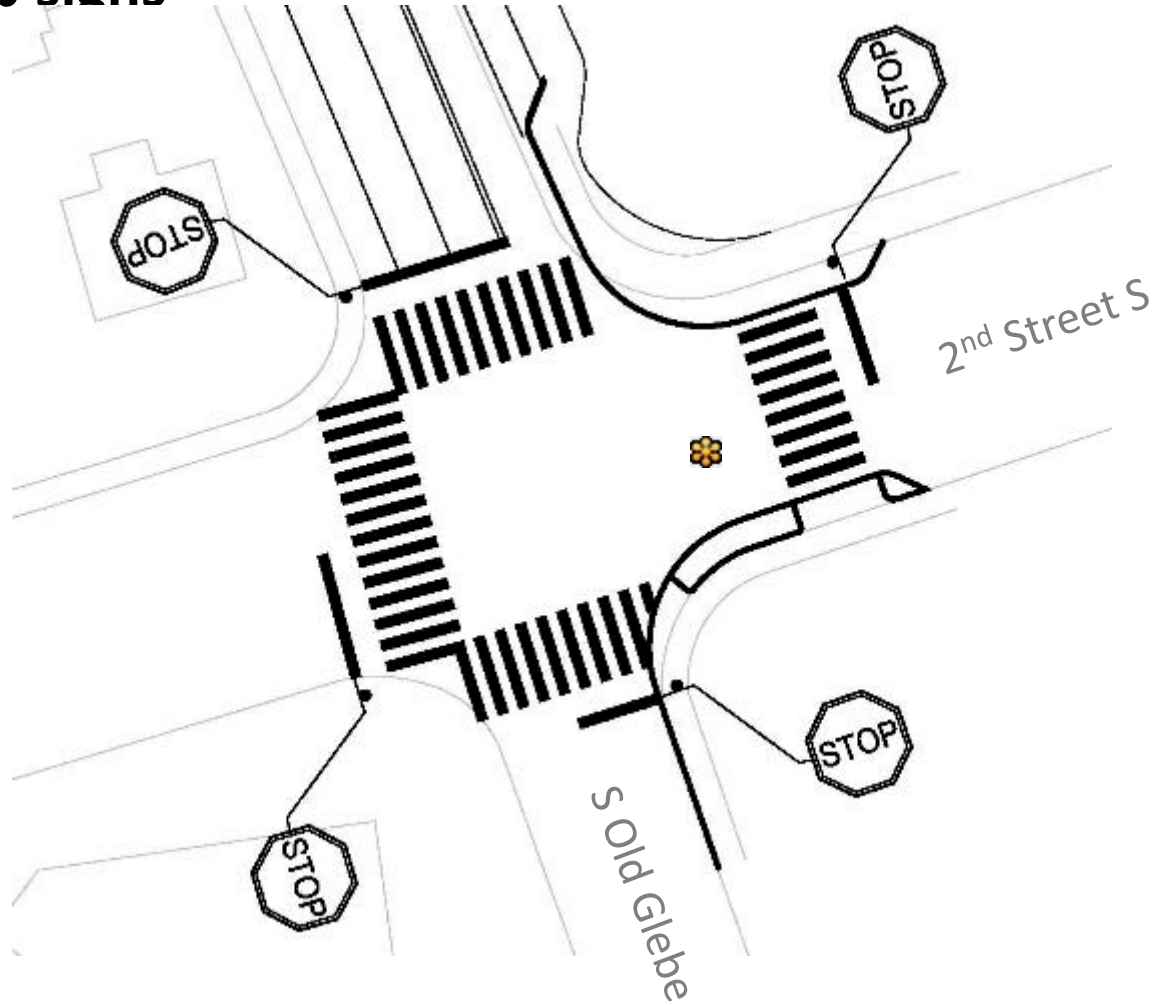
Congestion at 2nd Road S and S Old Glebe

1a Add dedicated southbound right turn lane on S Old Glebe



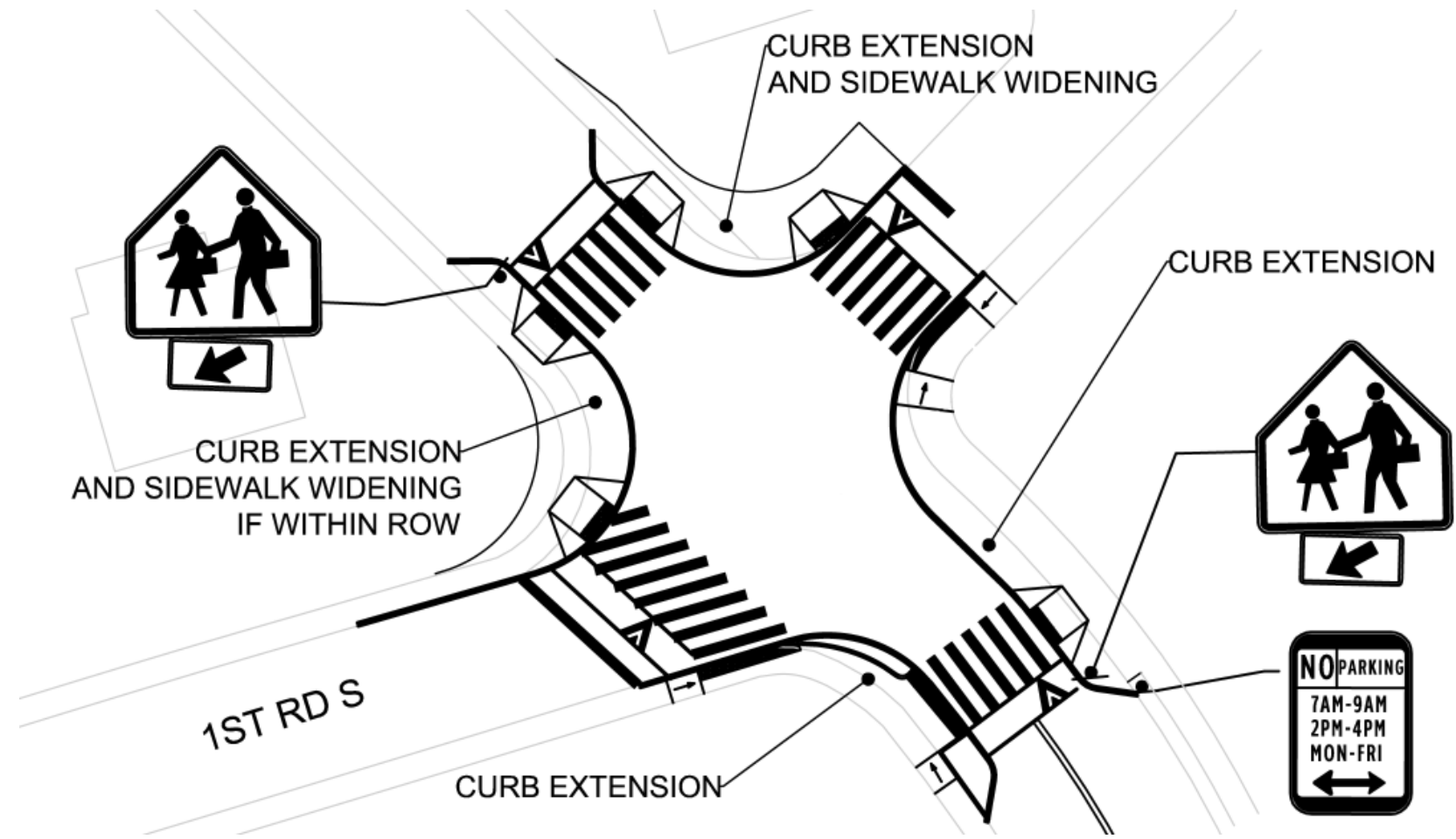
Congestion at 2nd Road S and S Old Glebe

1b Install 4-way stop signs



Yielding/Crossing at 1nd Road S and S Old Glebe

4b Crossing Improvements at 1st Road S & S Old Glebe Road



Congestion at 2nd Road S and S Old Glebe

1c Consider alternative drop off location on 2nd Street



Congestion at 2nd Road S and S Old Glebe

2a Install raised crosswalk & rapid flashing beacon in front of community center



Logistics Plan Legend

- ① Middle School/Theater Main Point of Entry
- ② Middle School Main Delivery Entrance
- ③ Theater Main Delivery Entrance
- ④ ADA Entrance for Middle School/Theater
- ⑤ Parent Dropoff/Pickup Zone

- 4' Pedestrian Lane for emergency egress from West side of TJMS
- Fire Department Access (16' wide)
- Construction Trailers
- Middle School Staff/Visitor Parking (# of spaces)

- Construction Site Fencing (6' chain link w/ privacy screening)
- Construction Haul/Delivery Routes
- Middle School/Theater Access Pathways
- Closed Parking Lot during Bus Dropoff/Pickup
- Bus Dropoff/Pickup Zone



Questions/Discussion