

NEW ELEMENTARY SCHOOL AT THOMAS JEFFERSON MIDDLE SCHOOL



Project Parameters for

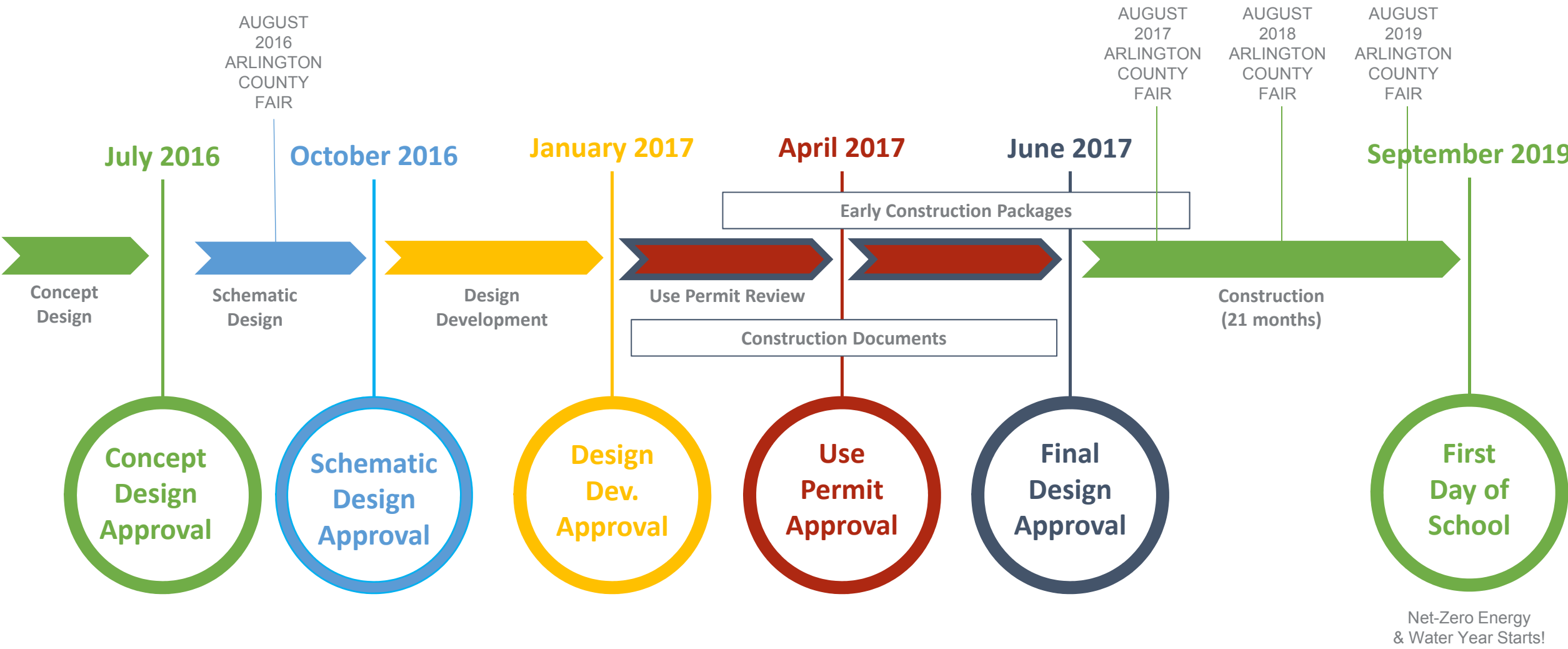
NEW ELEMENTARY SCHOOL AT THOMAS JEFFERSON MIDDLE SCHOOL

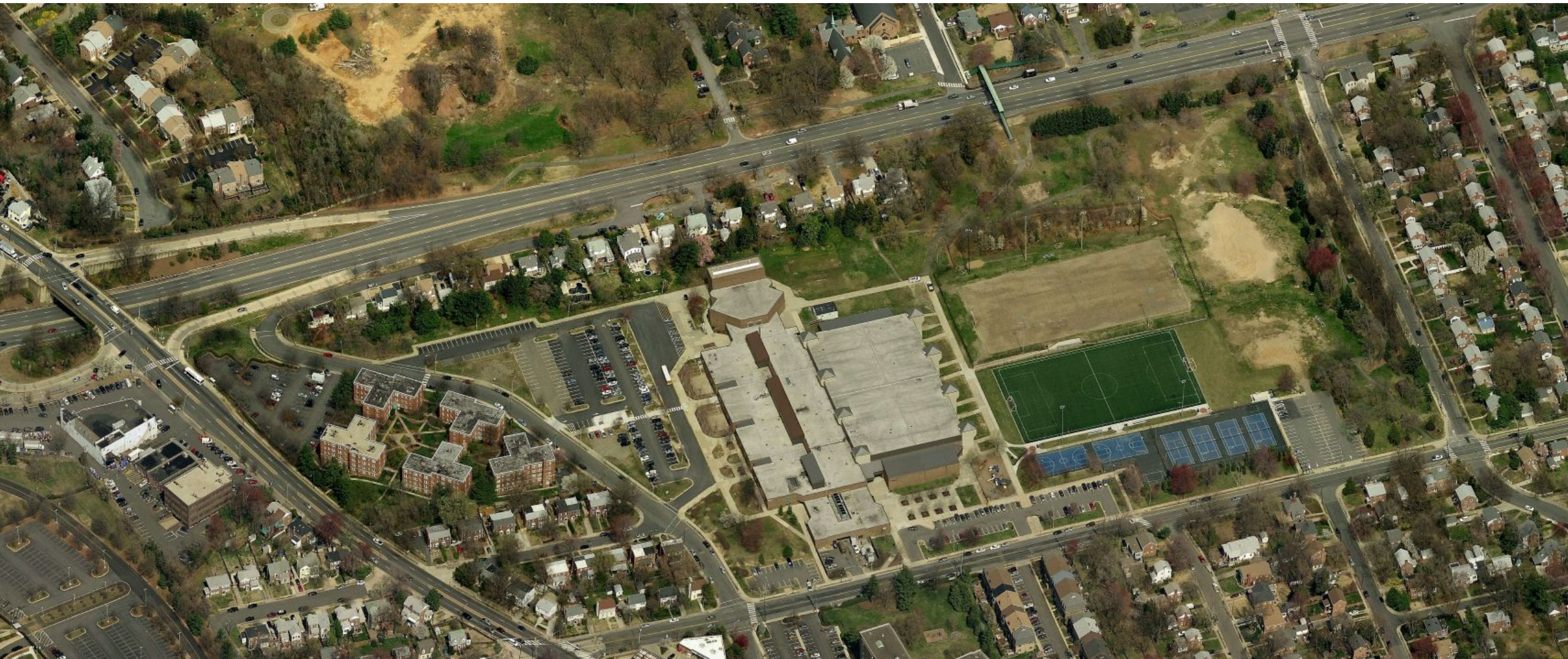
1. New Elementary School for the Henry Community
2. Support Strategic Plan Goal #4 – Provide Optimal Learning Environments
3. Address capacity by providing at least 725 seats
4. Open by start of school year 2019
5. Multi-story building in northwest corner of site
6. Structured parking
7. Project cost \$59 million

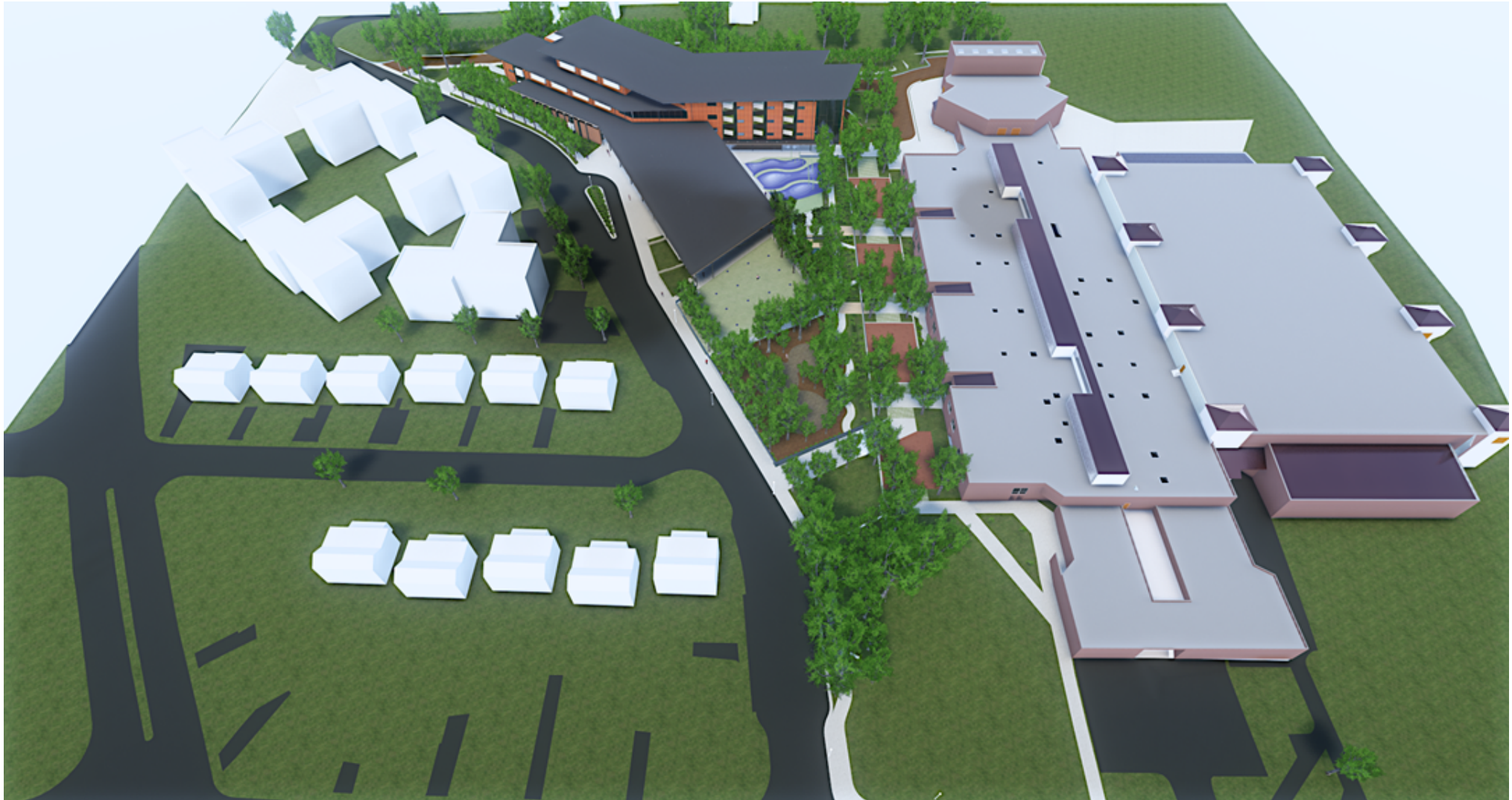
Project Chronology | Timeline

October 2012	FY 2013-2022 CIP identifies Kenmore site as the location of a new elementary school
June 2014	FY 2015-2024 CIP identifies Jefferson site as preferred location for a new elementary school
September 2014	County Board appointed TJWG begins
January 2015	TJWG issues Final Report and County Board decides “not now” to a new elementary at the Jefferson site
June 2015	School Board appointed SAWG begins
November 2015	SAWG issues Final Report including a preference to build a new elementary school for Henry at Jefferson
December 2015	School and County Board approves Jefferson as the site for a new elementary school
March 2016	School Board approves first three preferences of the SAWG
April to September 2016	BLPC & PFRC input during Concept and Schematic Design phases
November 2016	Use Permit submission
April 2017	Use Permit approval
July 2017	Estimated start of construction
September 2019	School Opening

General Schedule | Timeline









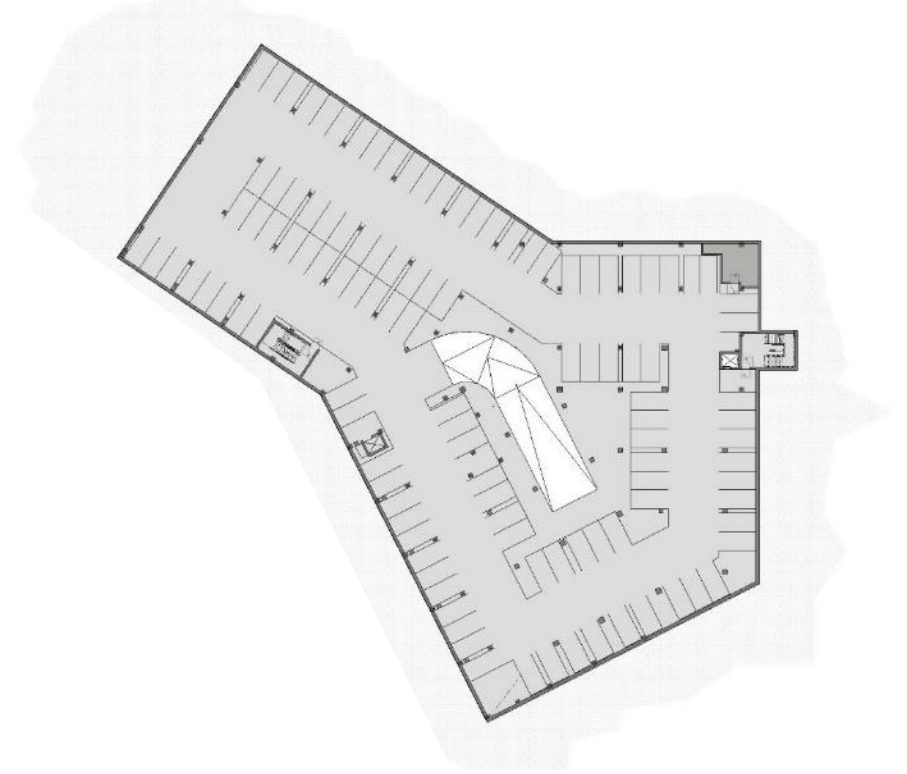
Overall existing site plan



Overall proposed site plan

Upper level = 113 spots

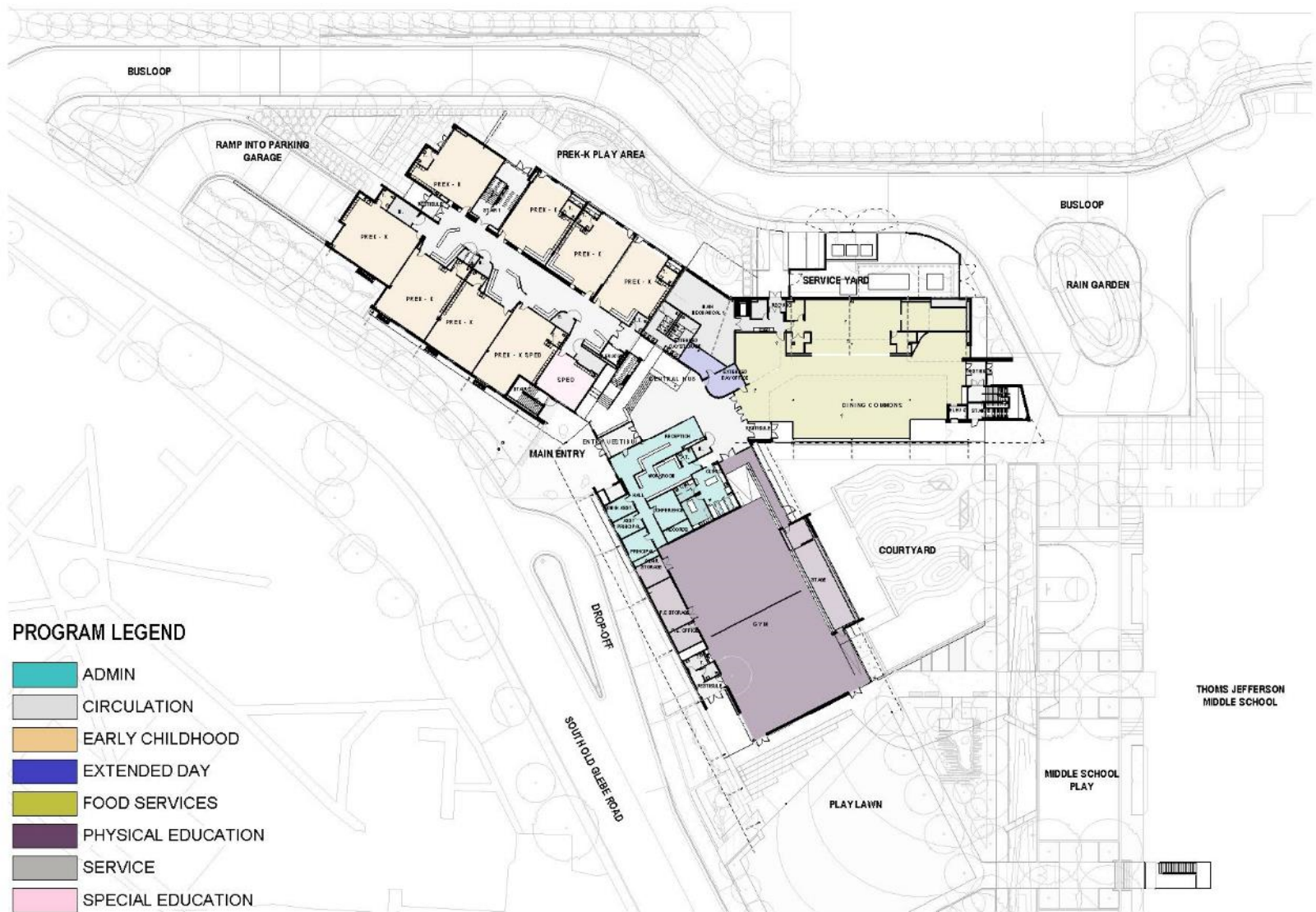
Lower level = 101 Spots

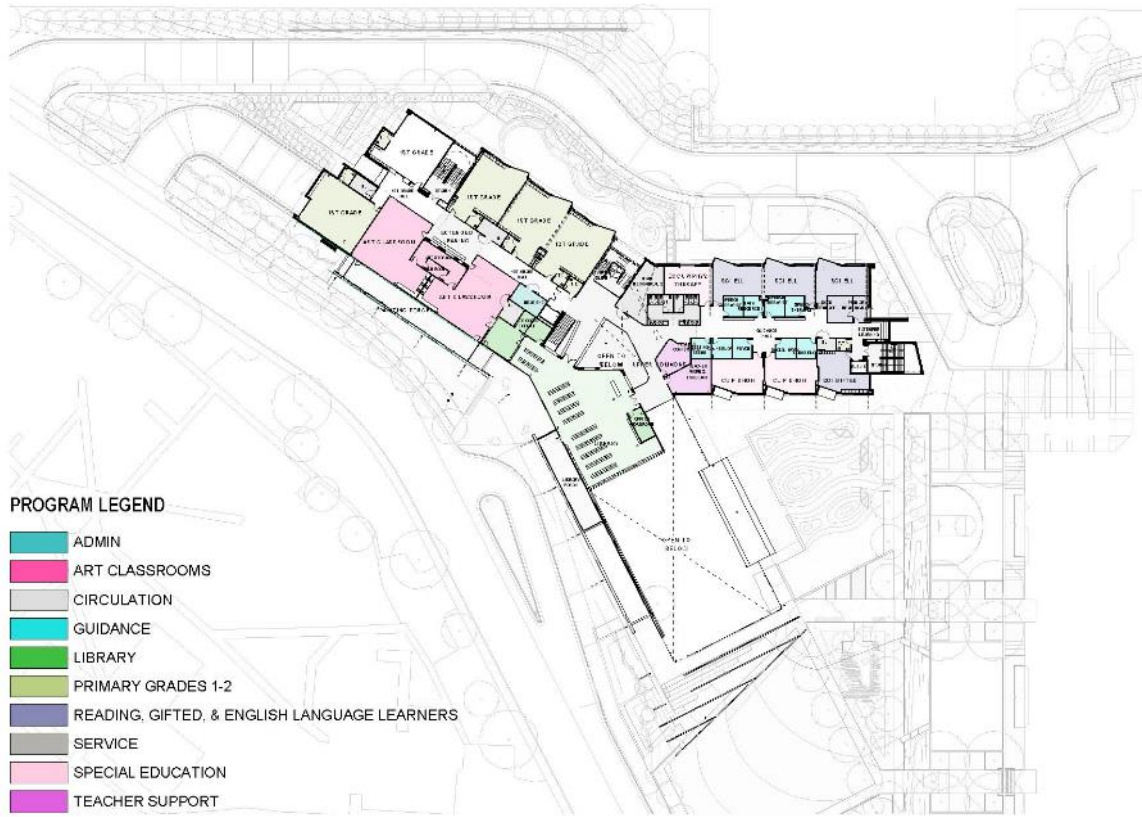


214 PARKING SPOTS TOTAL IN GARAGE

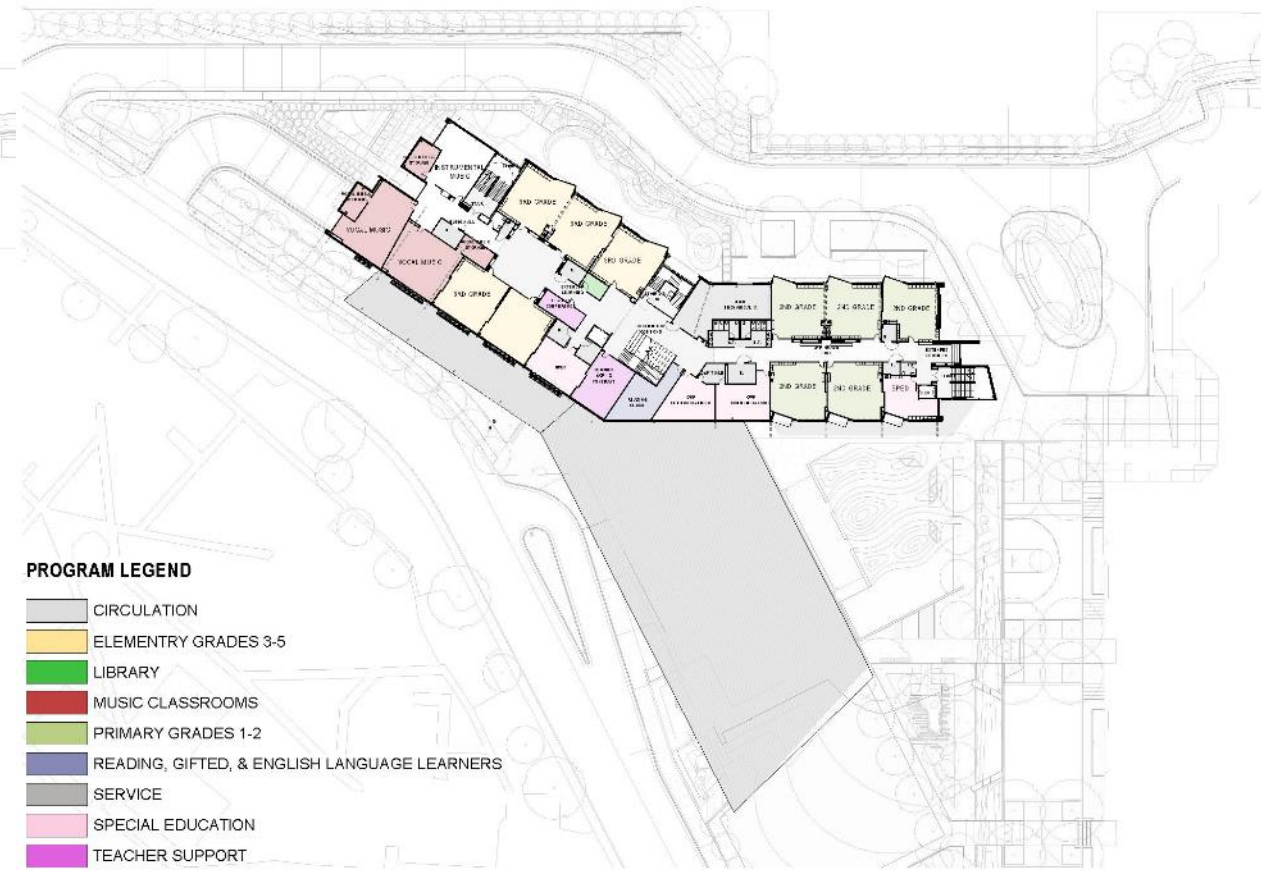


250 TOTAL PARKING SPOTS

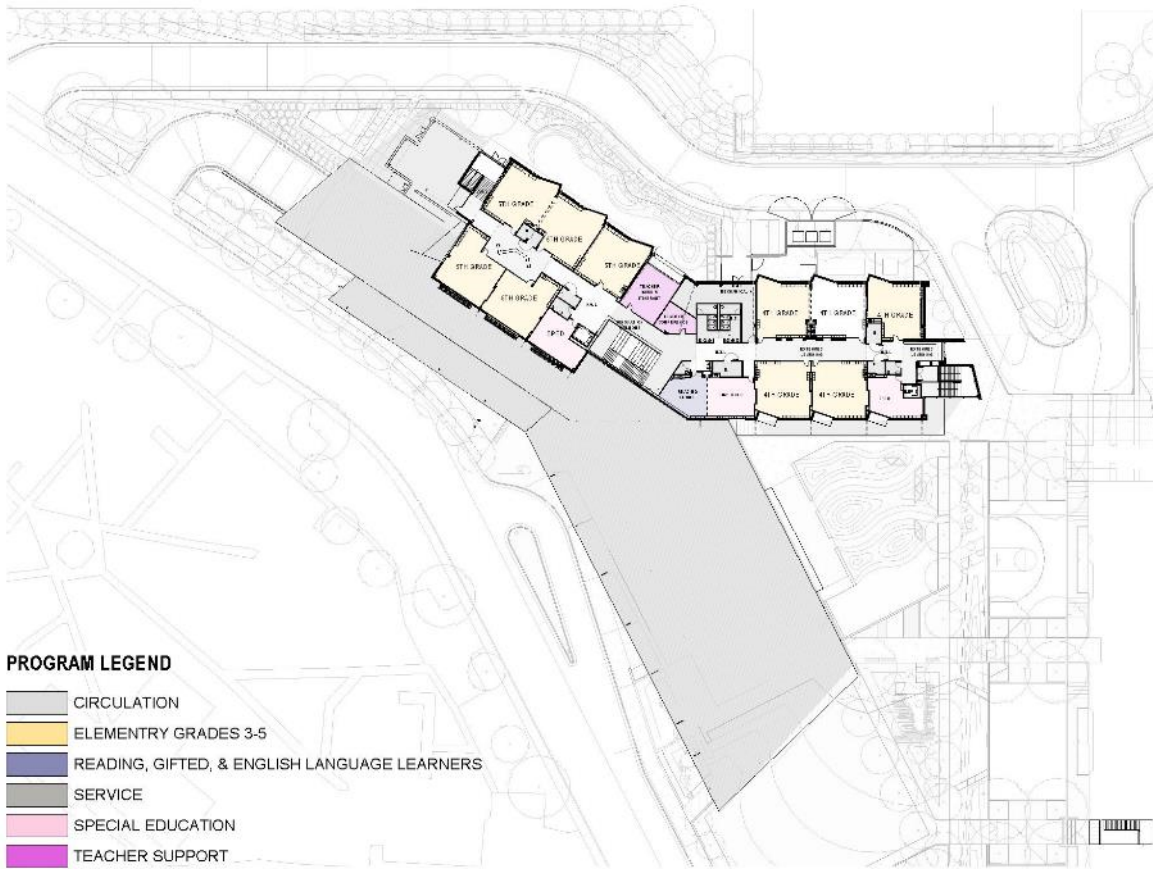




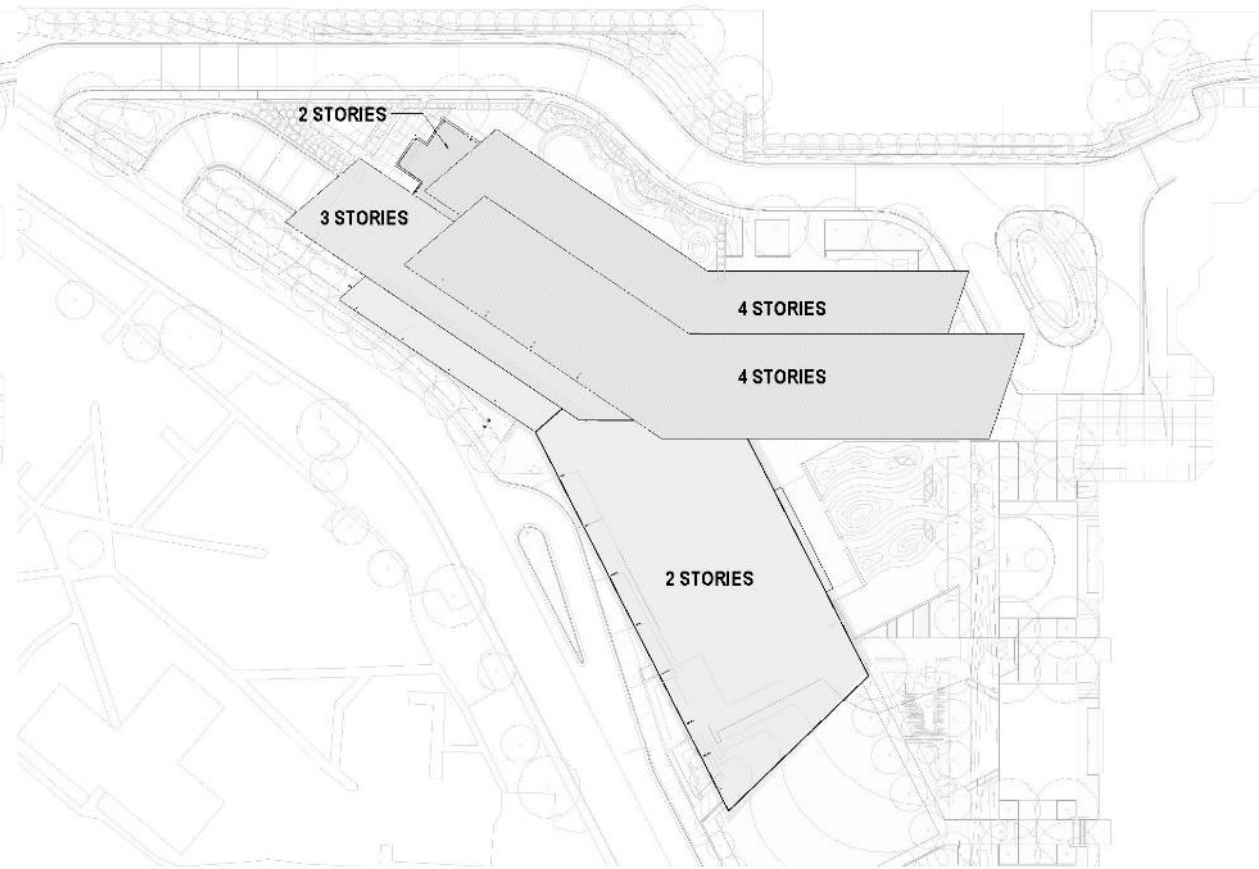
Second floor



Third floor



Fourth floor



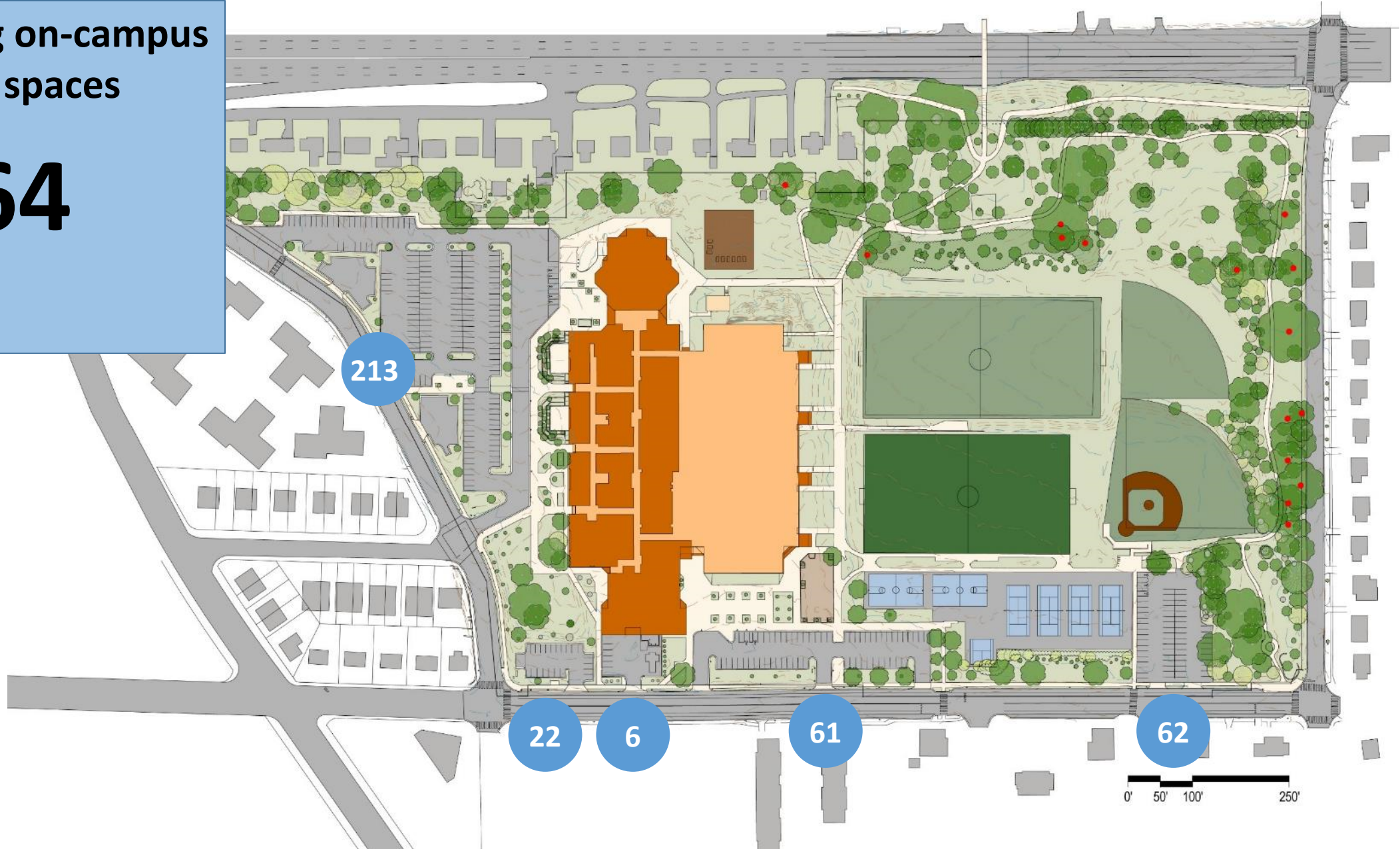
Roof

Transportation Analysis Summary

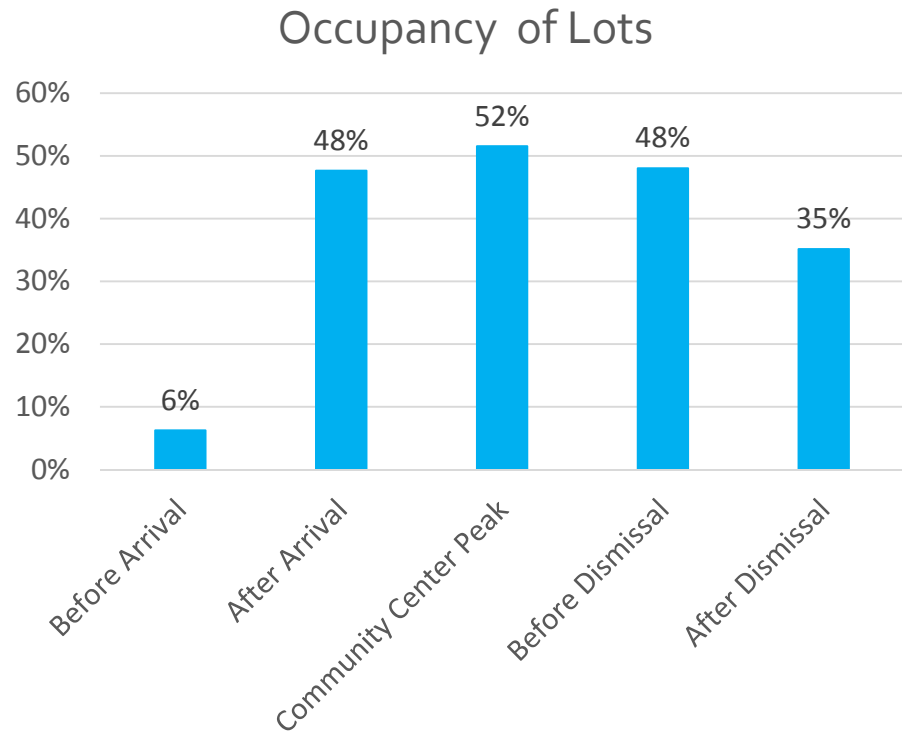
- Parent, student and staff travel surveys
- Estimated future parking demand
- Location of on-site transportation facilities (e.g., accessible walkways, bus and parent pick-up and drop-off)
- Traffic analysis, speed and crash study around school site
- Off-site infrastructure improvements to support safe access and circulation for all travel modes
- School programs that support more walking, biking, carpooling, bus and transit use

Total existing on-campus parking spaces

364



Existing Conditions-Parking Counts



*Shows parking before dismissal (~1:10PM) on a typical day



Parking Requirement, Arlington County Zoning Code

Parking Requirements (Zoning Code):	
Middle School	173
Elementary School	119
Total APS Requirement	292

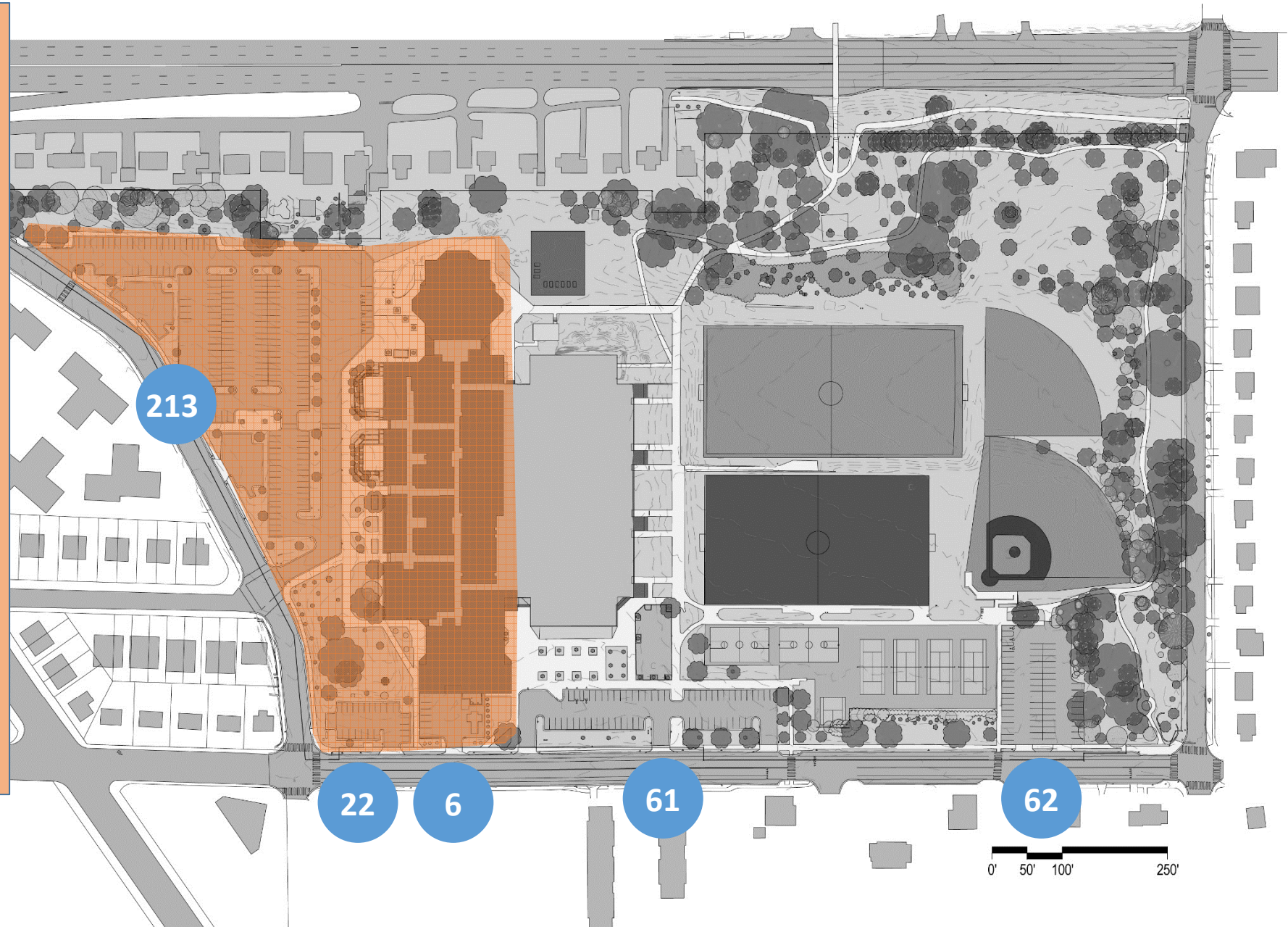
Assumption: Peak parking demand for community uses on site (i.e. community center, theater) does not overlap with peak demand for school uses. Thus, separate zoning requirements for those uses are not included in this total.

**Total estimated daytime
parking needs for APS
uses**

249

Includes estimated spaces for staff
and visitors for both the new
Elementary School and at-capacity
Middle School

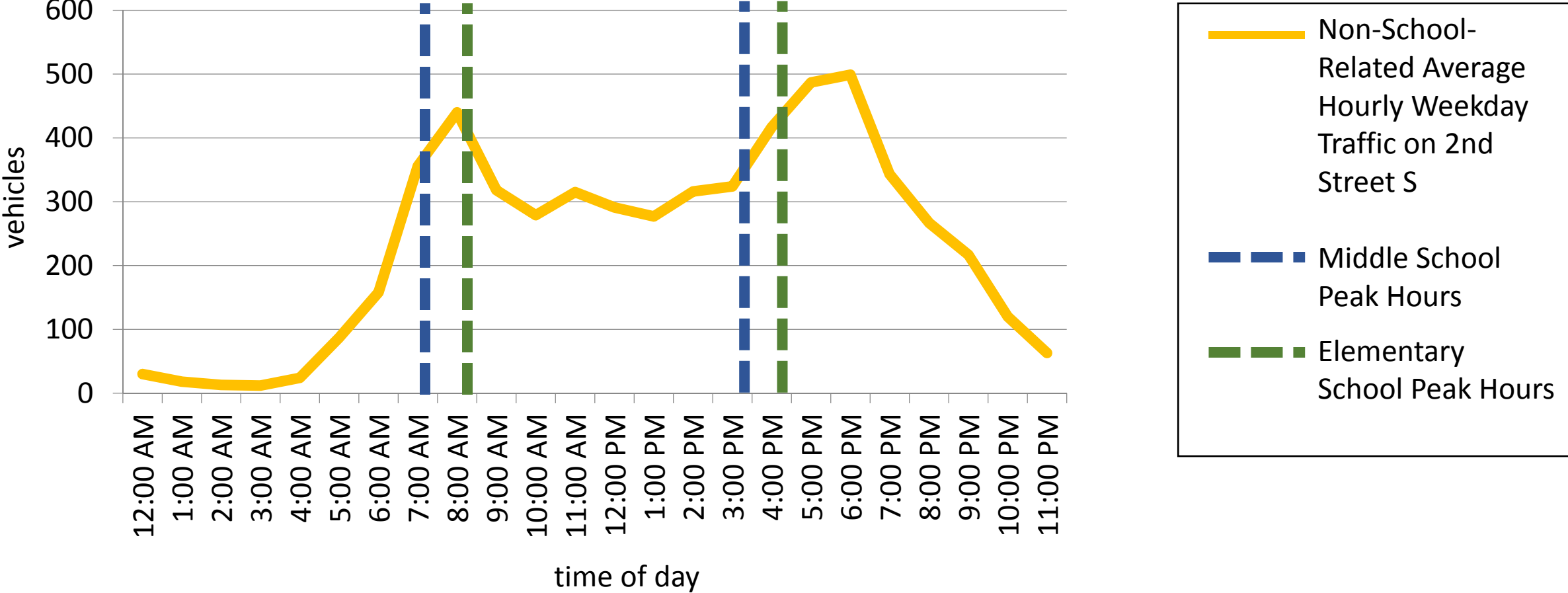
Includes some assumed reduction in
demand from TDM and conservative
use of available on-street parking



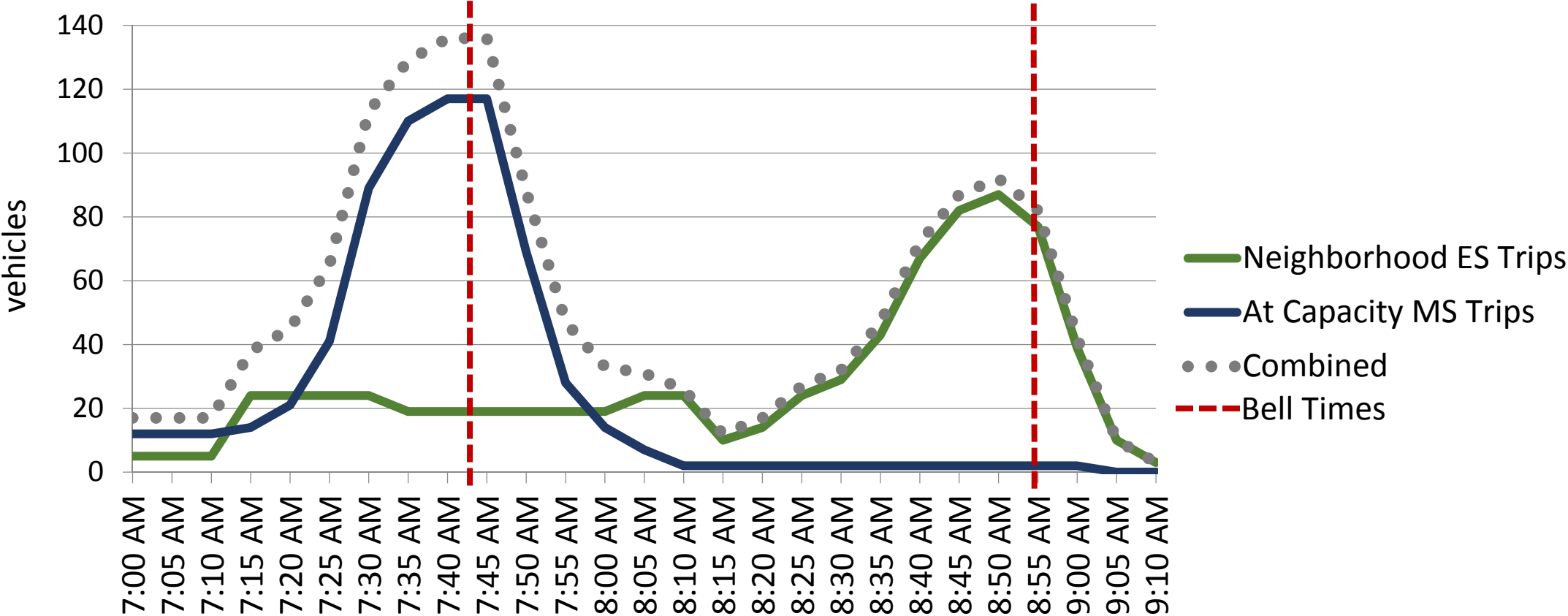
Strategies that could allow APS to provide less than 249 spaces include:

- Joint use of parking between the east- and west-side uses
- Increased use of on-street parking
- More aggressive TDM programs to support staff carpooling, transit, walking and biking

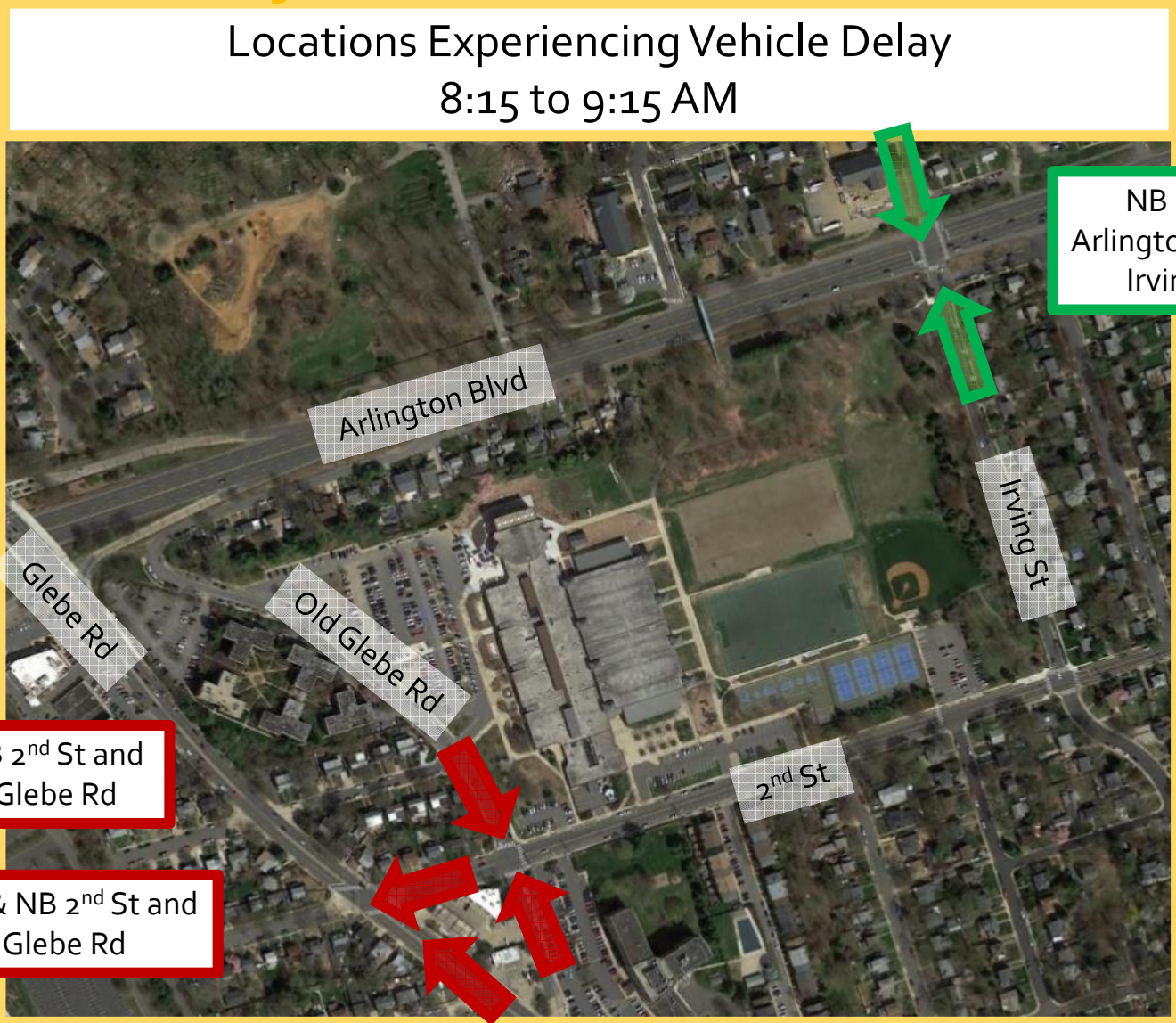
Non-School Related Traffic and School Peak Hours



Middle and Elementary School Traffic Volume: Arrival



Future Traffic Analysis for NES

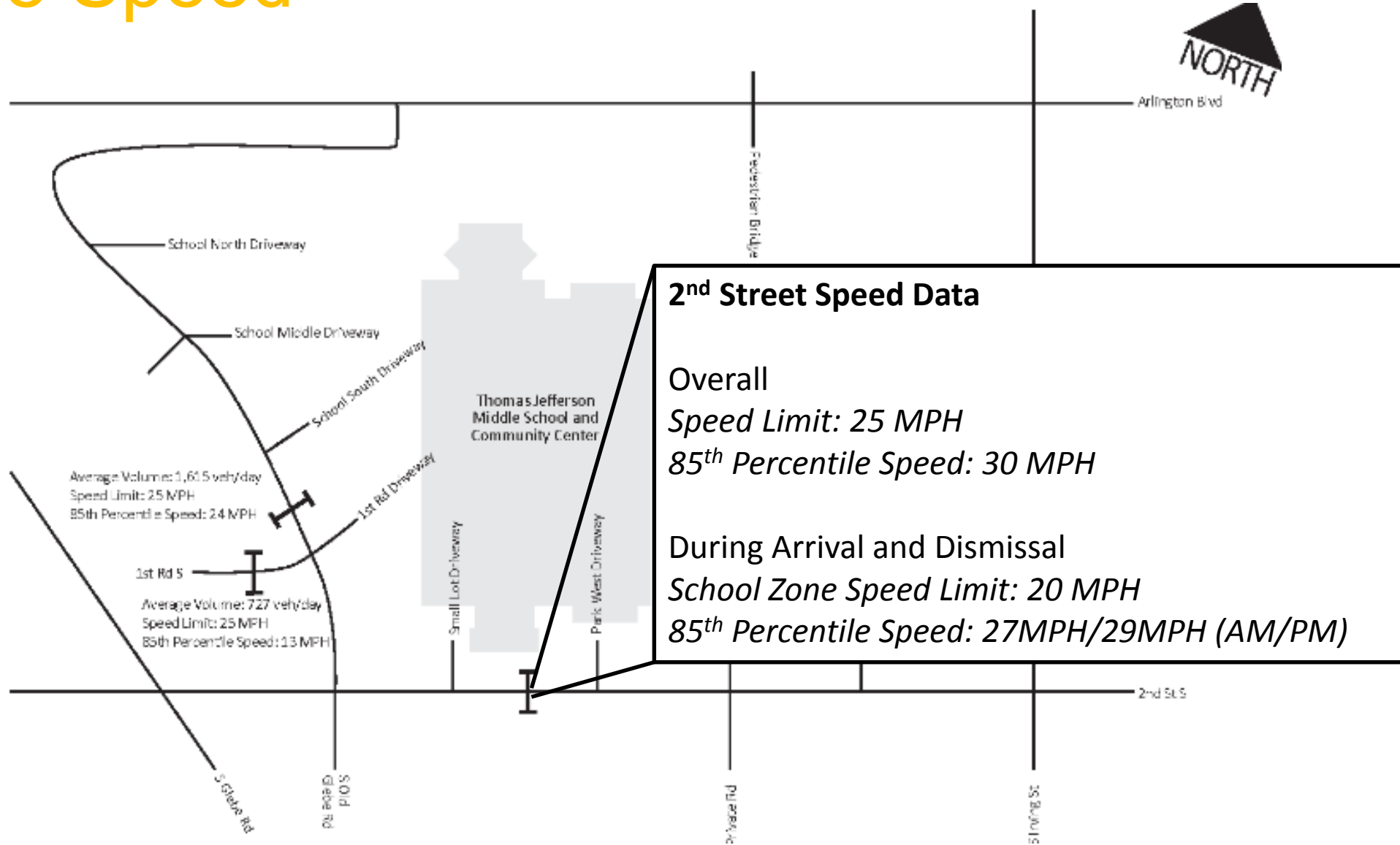


Traffic Crashes



- 3 years of crash data
- Crash data doesn't capture near misses or close calls
- Arlington Blvd and Glebe Road - most crashes typical of high-volume roads
- 7 crashes involved pedestrians
- 2 crashes involved bicycles

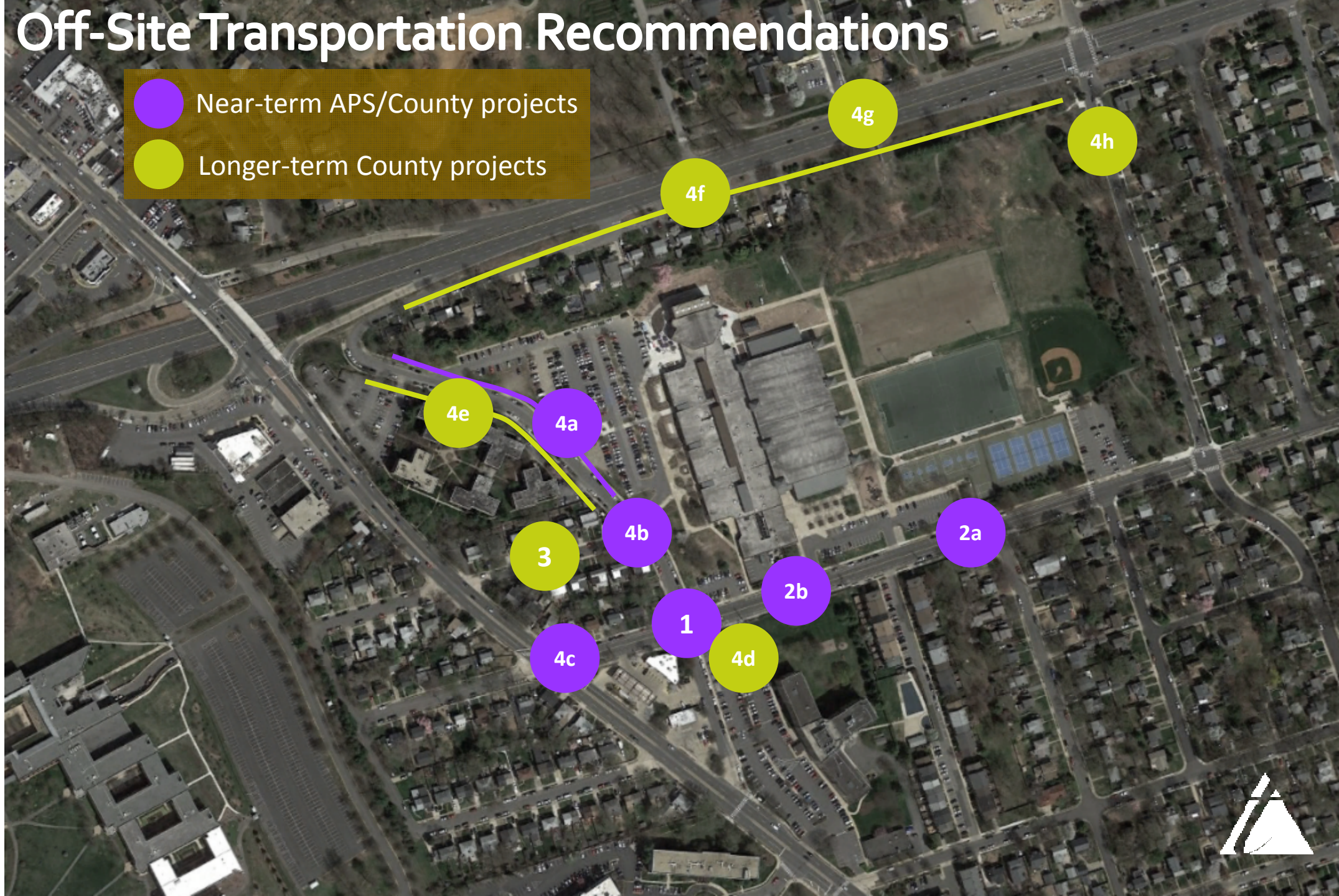


Vehicle Speed



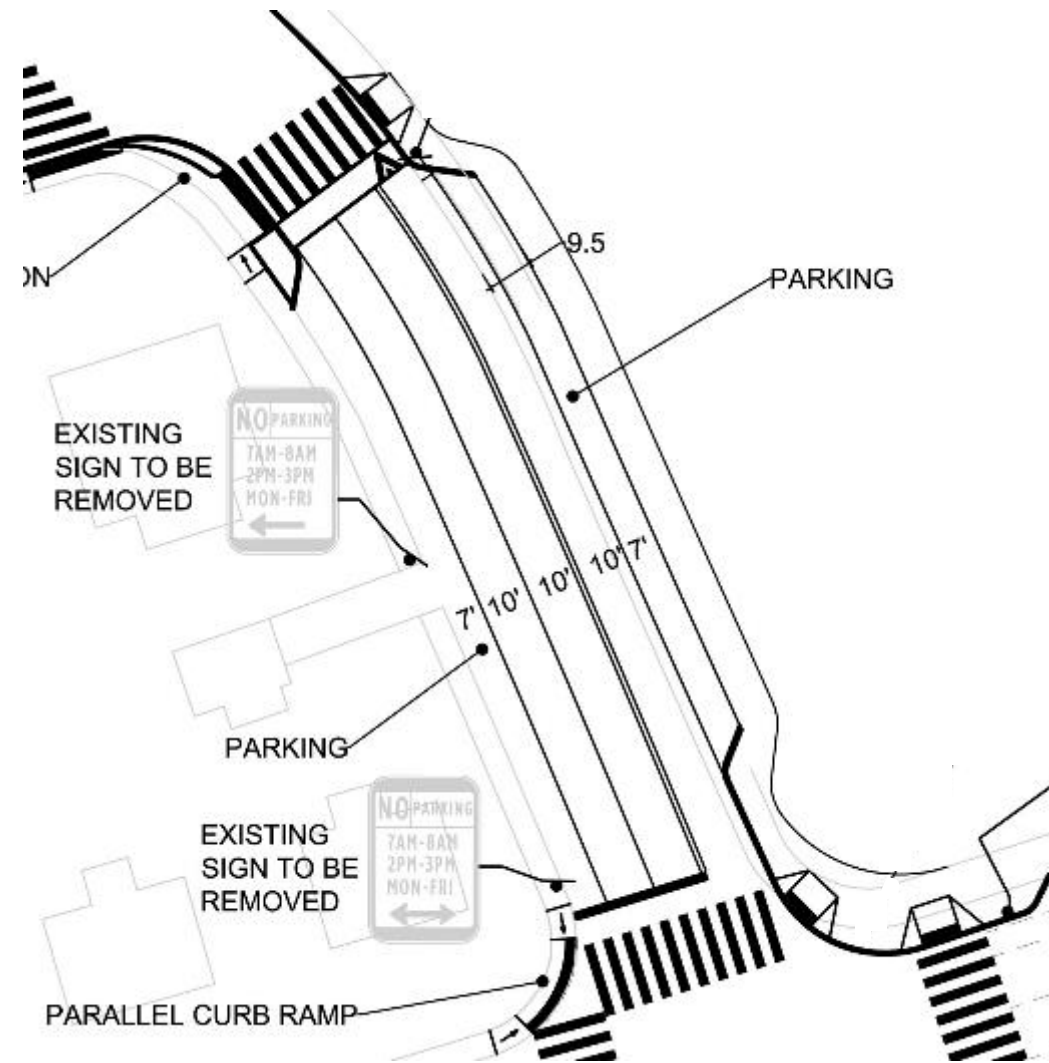
Off-Site Transportation Recommendations

-  Near-term APS/County projects
-  Longer-term County projects



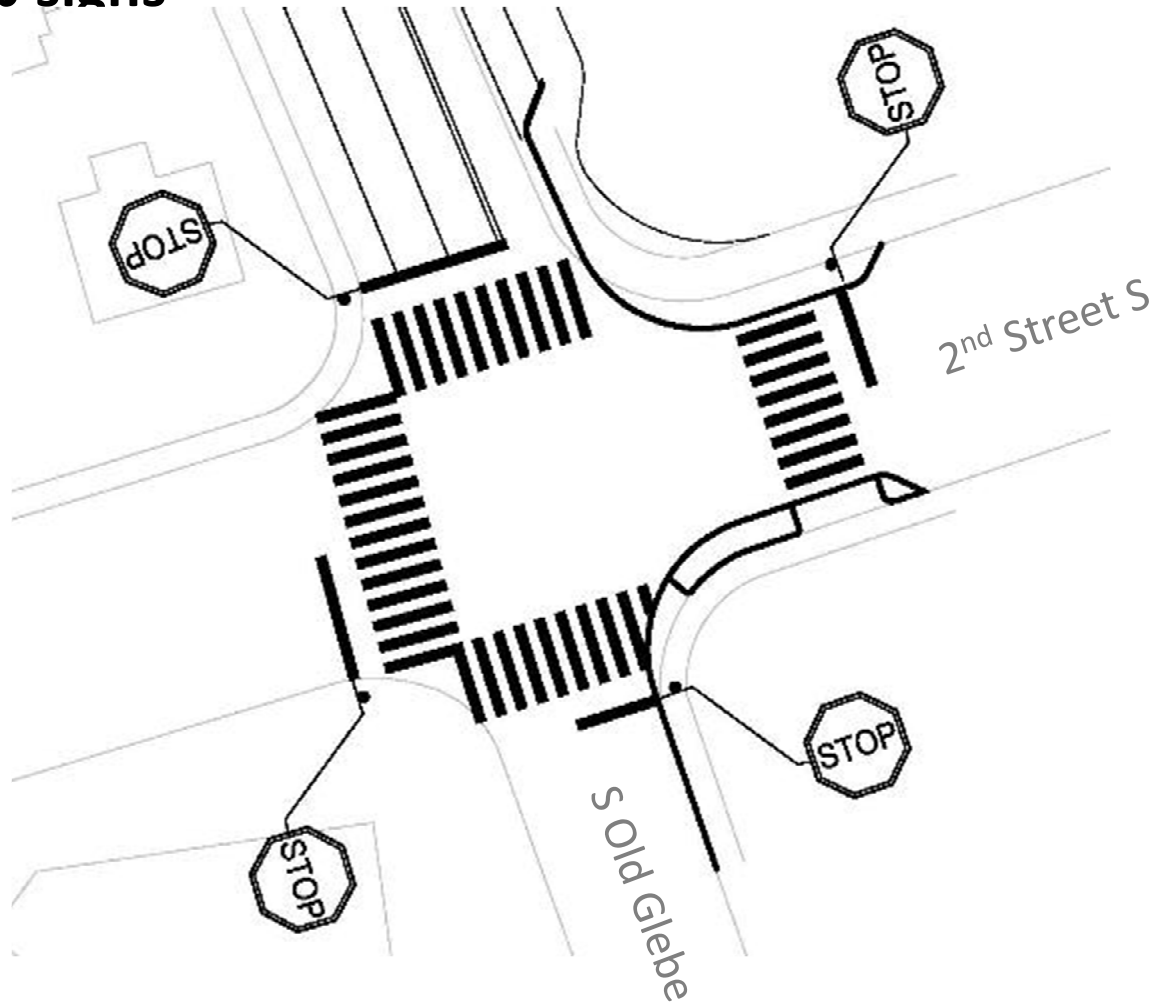
Congestion at 2nd Road S and S Old Glebe

1a Add dedicated southbound right turn lane on S Old Glebe



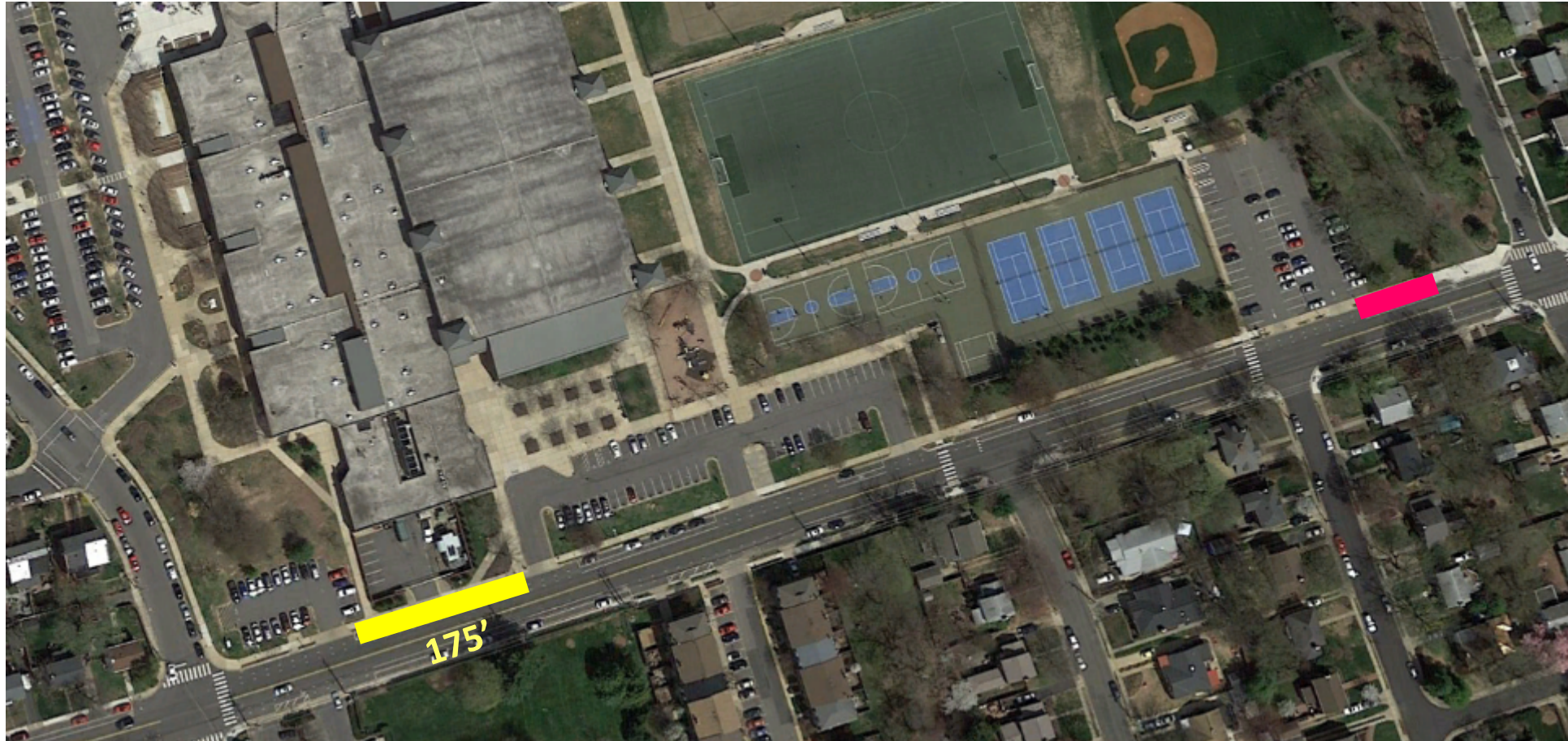
Congestion at 2nd Road S and S Old Glebe

1b Install 4-way stop signs



Congestion at 2nd Road S and S Old Glebe

1c Consider alternative drop off location on 2nd Street



Congestion at 2nd Road S and S Old Glebe

2a Install raised crosswalk & rapid flashing beacon in front of community center



Questions/Discussion