

# Stratford School: Historical Highlights

February 21, 2017

Special Committee on Historic Interpretation, Meeting #2

## Historical & Cultural Significance:

- Designated an Arlington Historic District (June 2016).
- Individually listed in the Virginia Landmarks Register (2003) & National Register of Historic Places (2004).
- Nationally significant as the first integrated public school in Virginia. Integration occurred on February 2, 1959, ending Virginia's policy of "massive resistance."

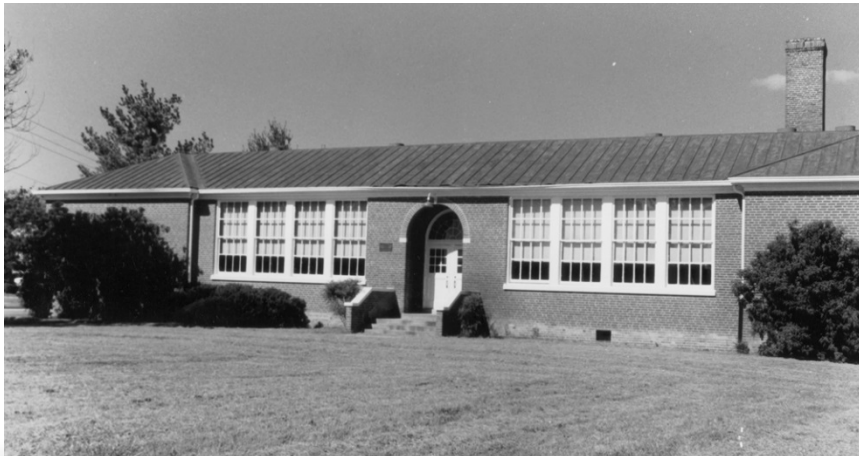
## Architectural Significance:

- Locally significant as the County's finest example of International Style architecture as applied to a school.
  - Built in 1950.
  - Designed by Architect Rhees Burket, Sr., architect for 4 schools in Arlington.
  - Burket was a highly regarded expert in modern school construction and was a prolific architect in our region. Stratford is the purest and best example of his work.

- 8 of 11 criteria met for Stratford Historic District Designation
  - Highlights local history, architecture, individuals, as well as broader historical and cultural events.

# Designation Criterion A

The property is listed in the National Register of Historic Places.

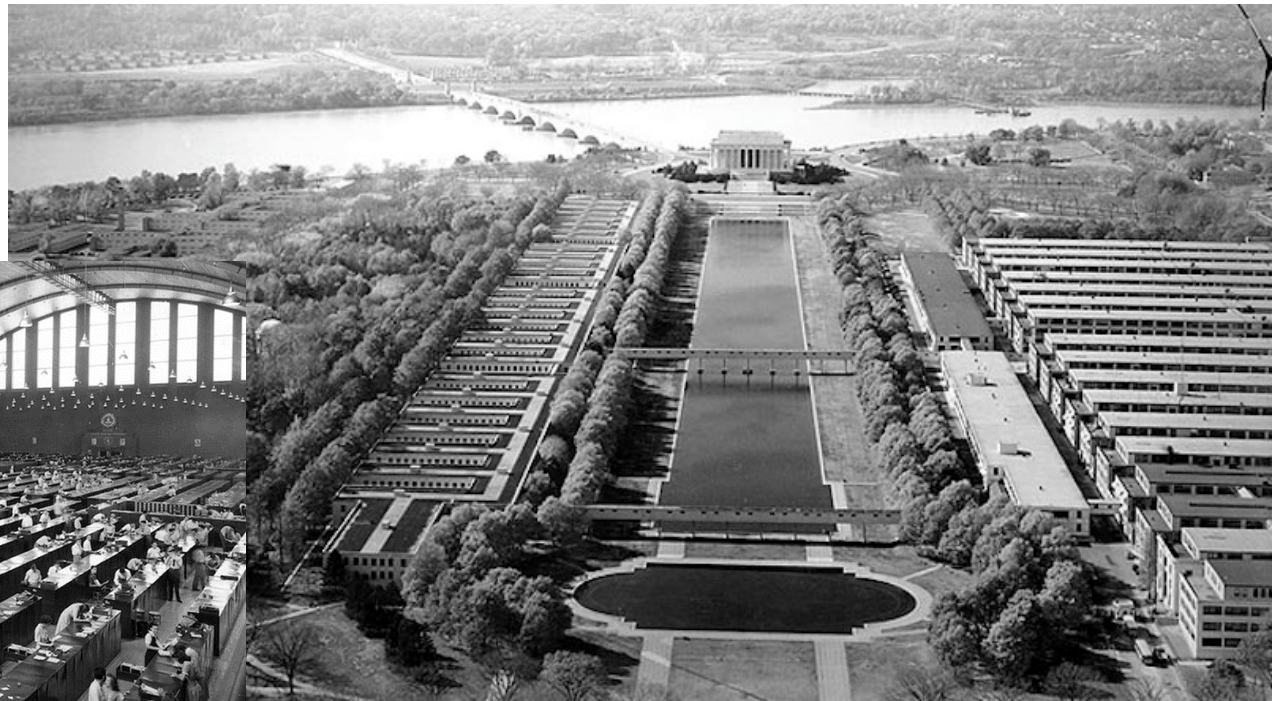


# Designation Criterion A



# Designation Criterion B

The property has character, interest, or value as part of the development, heritage, or cultural characteristics of the country, state, or nation.



## Designation Criterion B

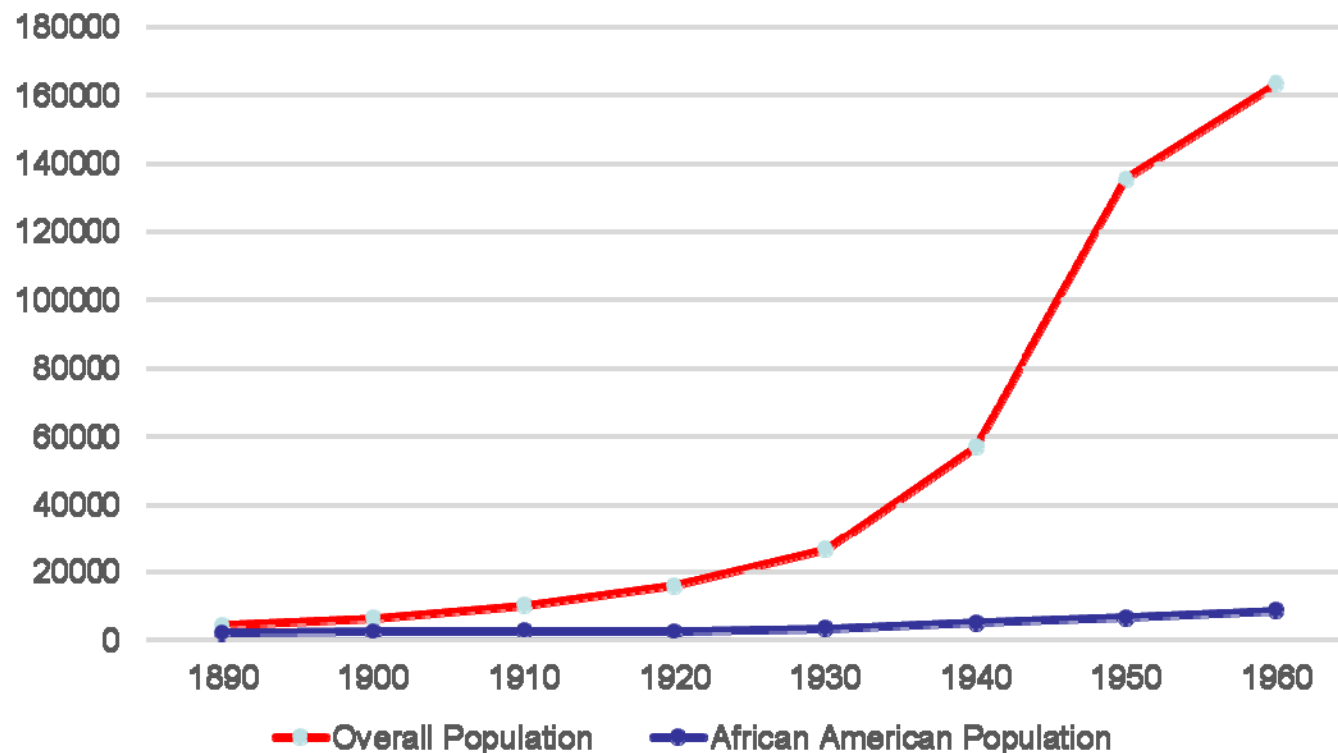
The property has character, interest, or value as part of the development, heritage, or cultural characteristics of the country, state, or nation.



## Designation Criterion B

The property has character, interest, or value as part of the development, heritage, or cultural characteristics of the country, state, or nation.

African American Population in comparison to Overall Population

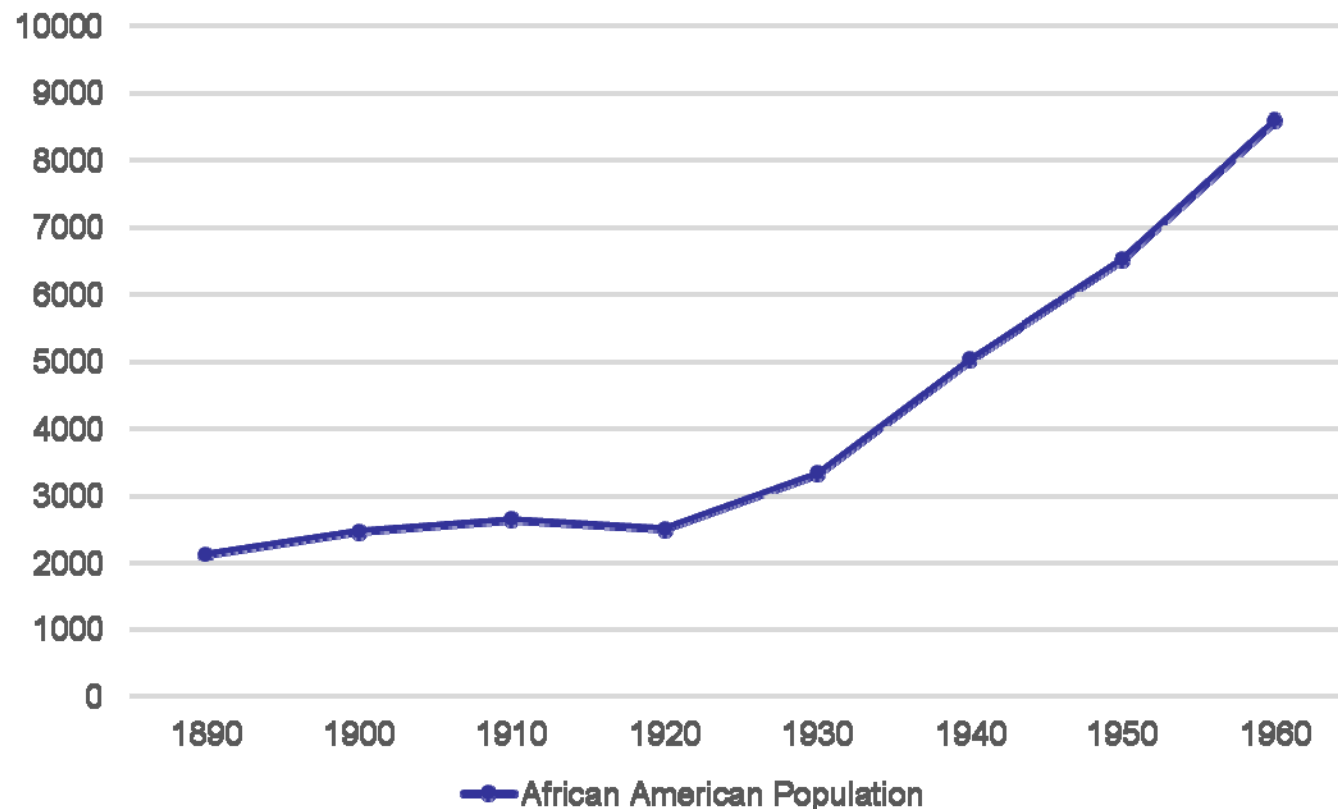




## Designation Criterion B

The property has character, interest, or value as part of the development, heritage, or cultural characteristics of the country, state, or nation.

African American Population



## Designation Criterion C

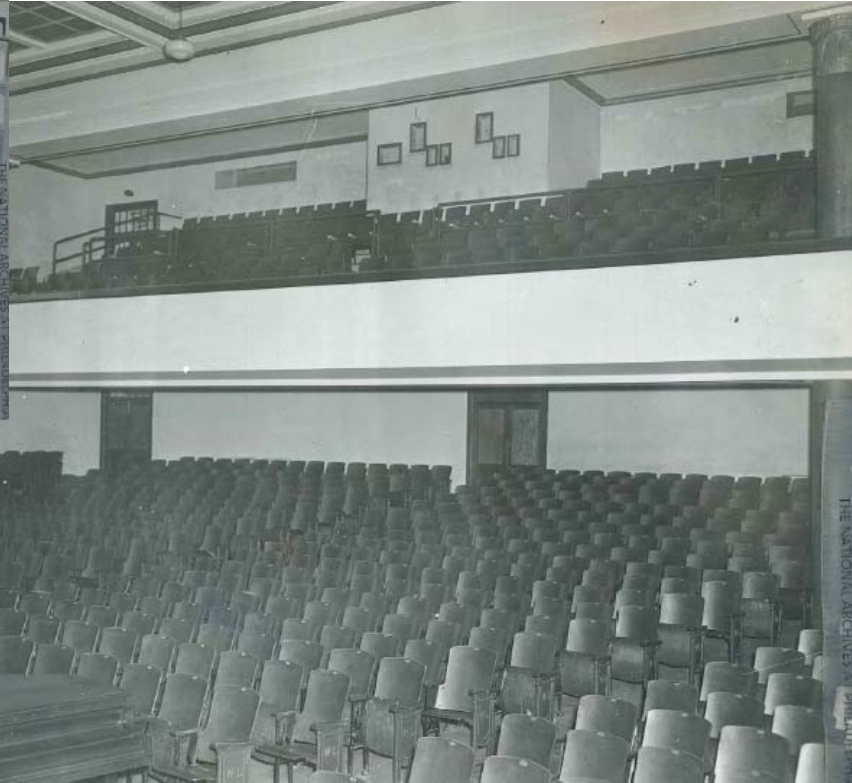
The property was the site of a significant local, state, or national event.



# Segregated School System



# Segregated School System



# 1957 Stratford Integration Attempt



# Little Rock - September 1957



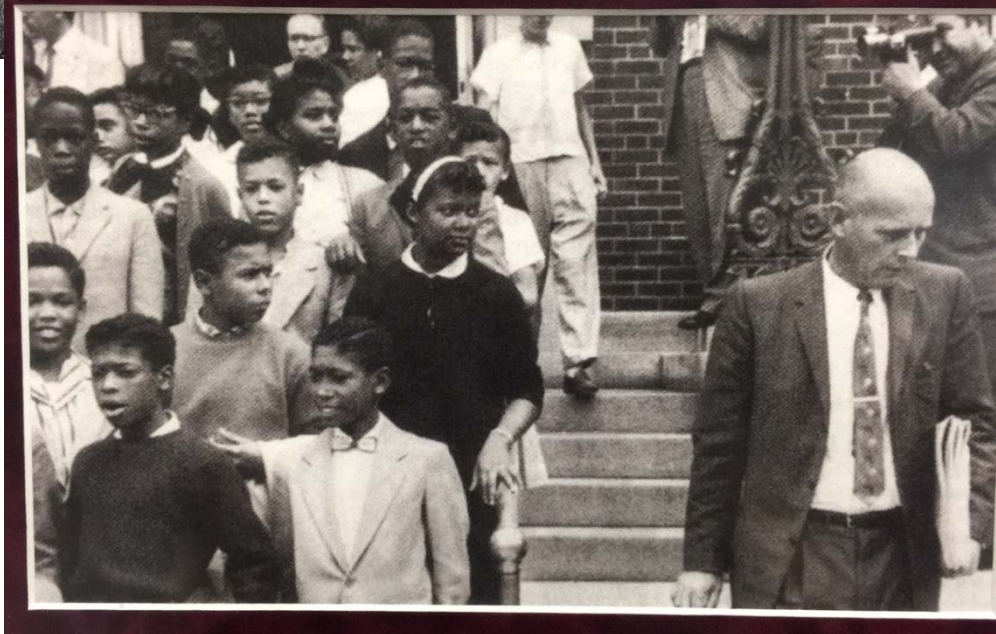
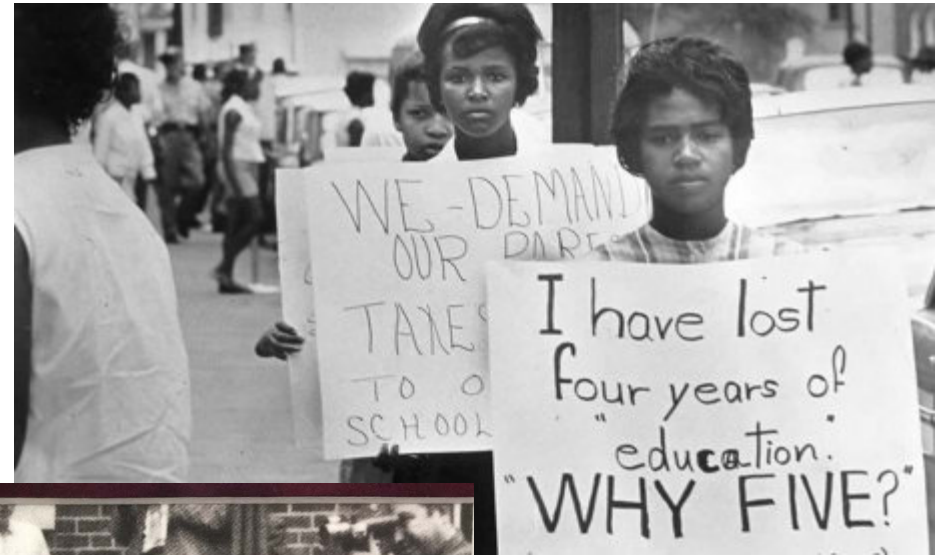


# 1959 Integration





# Massive Resistance & Integration



# 1959 Integration of Stratford



# Ruby Bridges, 1960



# Virginia Pupil Placement Board



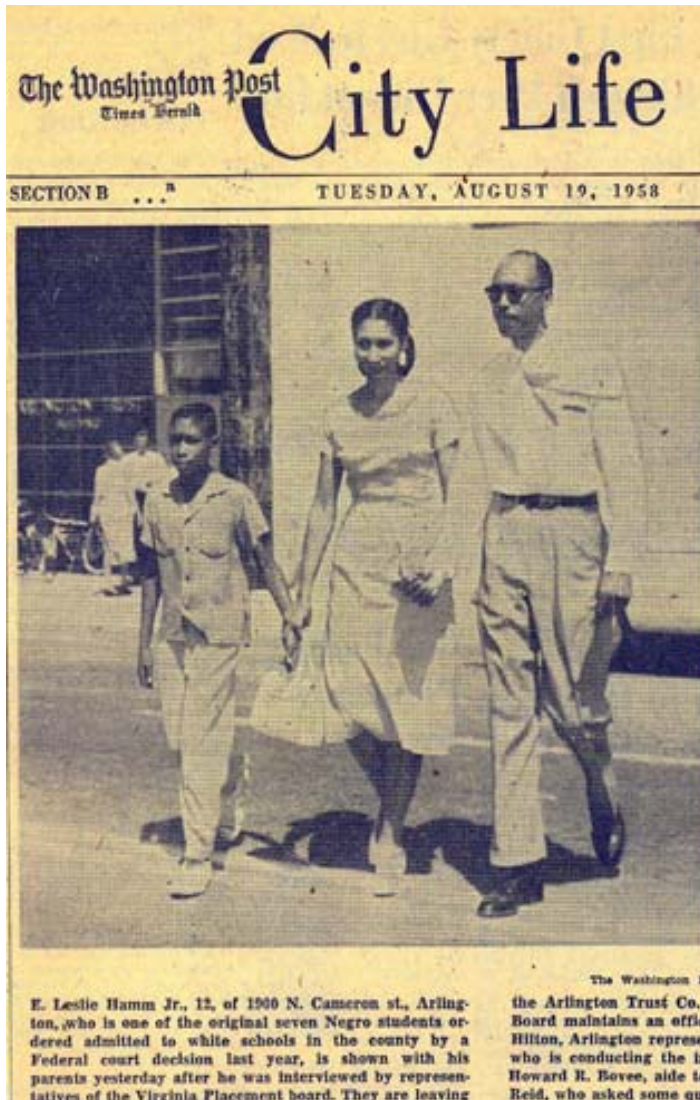
## Designation Criterion D

The property is associated with a person or persons who significantly contributed to the development of the county, state, or nation.



*To integrate . . . M. Jones, G. Thompson, L. Newman, R. Deskins.*

# Designation Criterion D

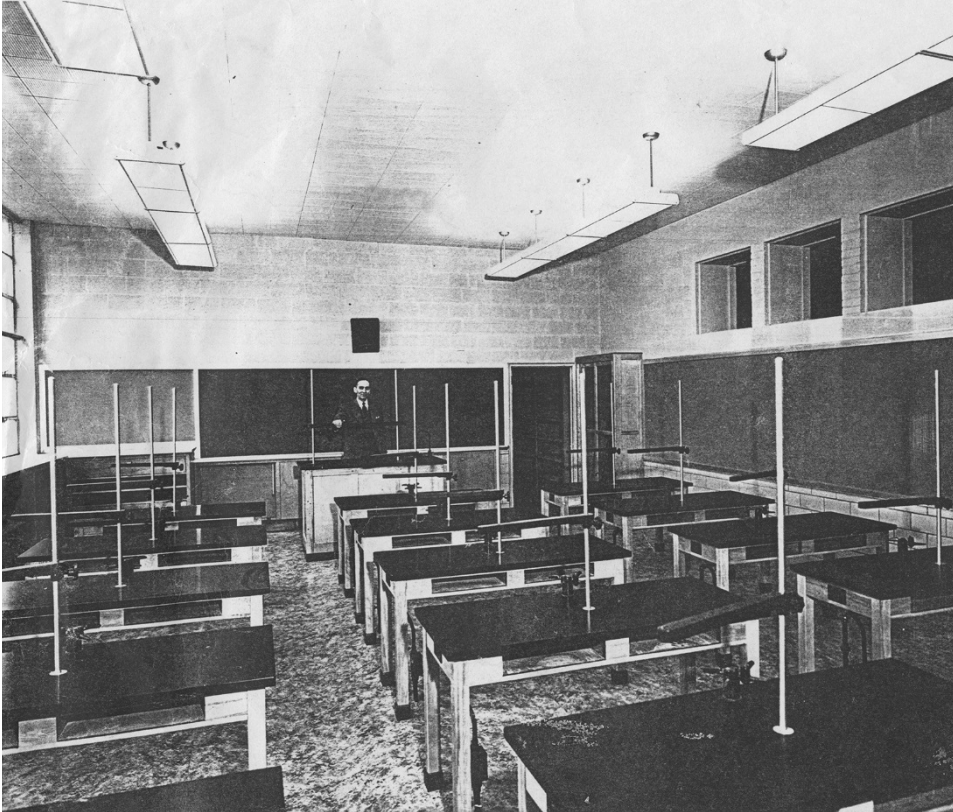


# Designation Criterion E

The property embodies distinguishing characteristics of an architectural style valuable for the study of a period, type, or method of construction.



# Designation Criterion E



New modern science labs,  
gymnasiums, and library facilities.





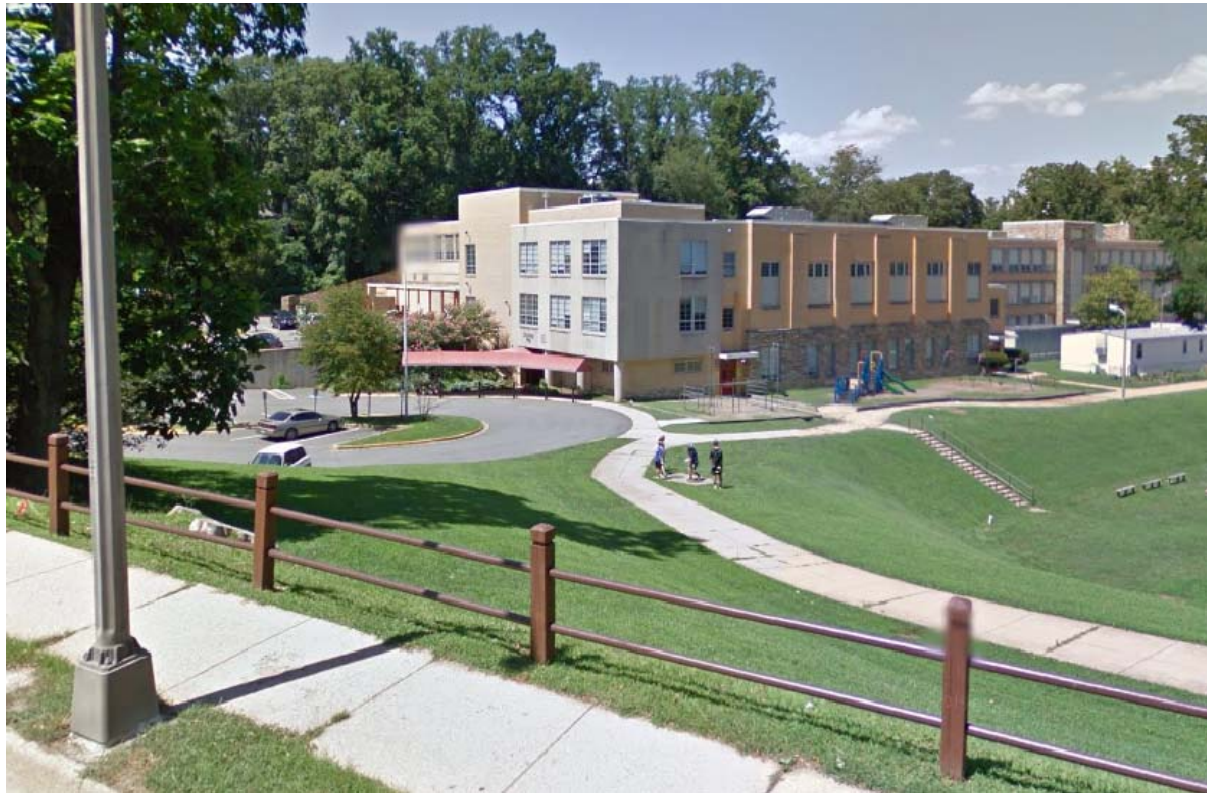
# Designation Criterion G

The property embodies the elements of design, detailing, materials, or craftsmanship that renders it structurally or architecturally significant.



# Designation Criterion H

The property has a distinctive location, or singular physical characteristic that makes it an established or familiar visual feature.



# Designation Criterion K

The property is suitable for preservation or restoration.



# Discussion

