



# TRANSPORTATION COMMISSION

Stratford and H-B Woodlawn  
Wilson Site

Multi-Modal Transportation Recommendations  
February 9, 2017

# Transportation-related characteristics of each school



## Stratford

All students with a physical or developmental disability

Nearly all travel to and from school in wheel-chair equipped buses

Arrival and dismissal ritual integrated into students' educational atmosphere



# Transportation-related characteristics of each school

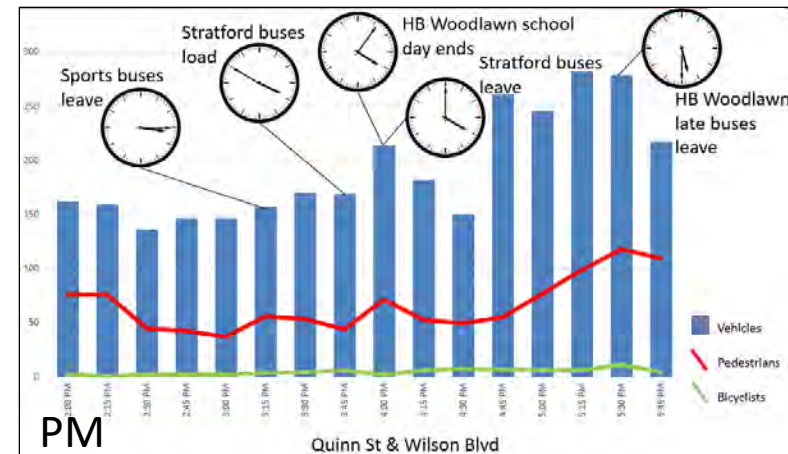
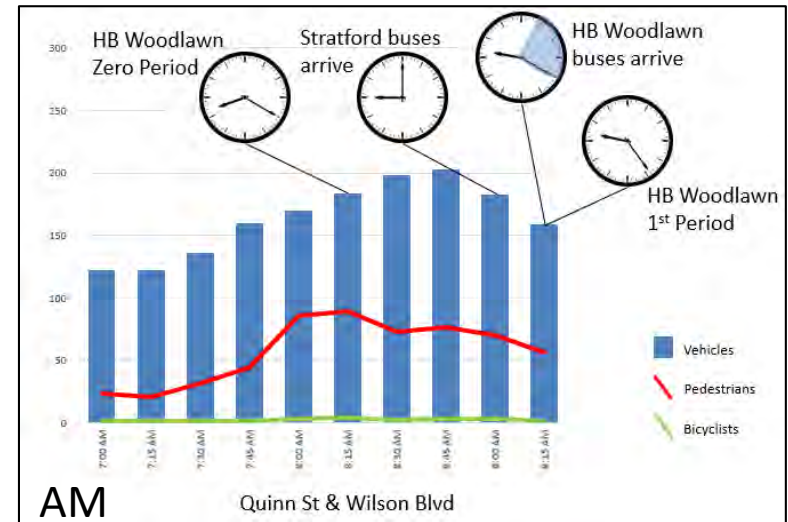


## H-B Woodlawn

School-related arrival and departure activity does not overlap with peak commute times on Wilson Boulevard.

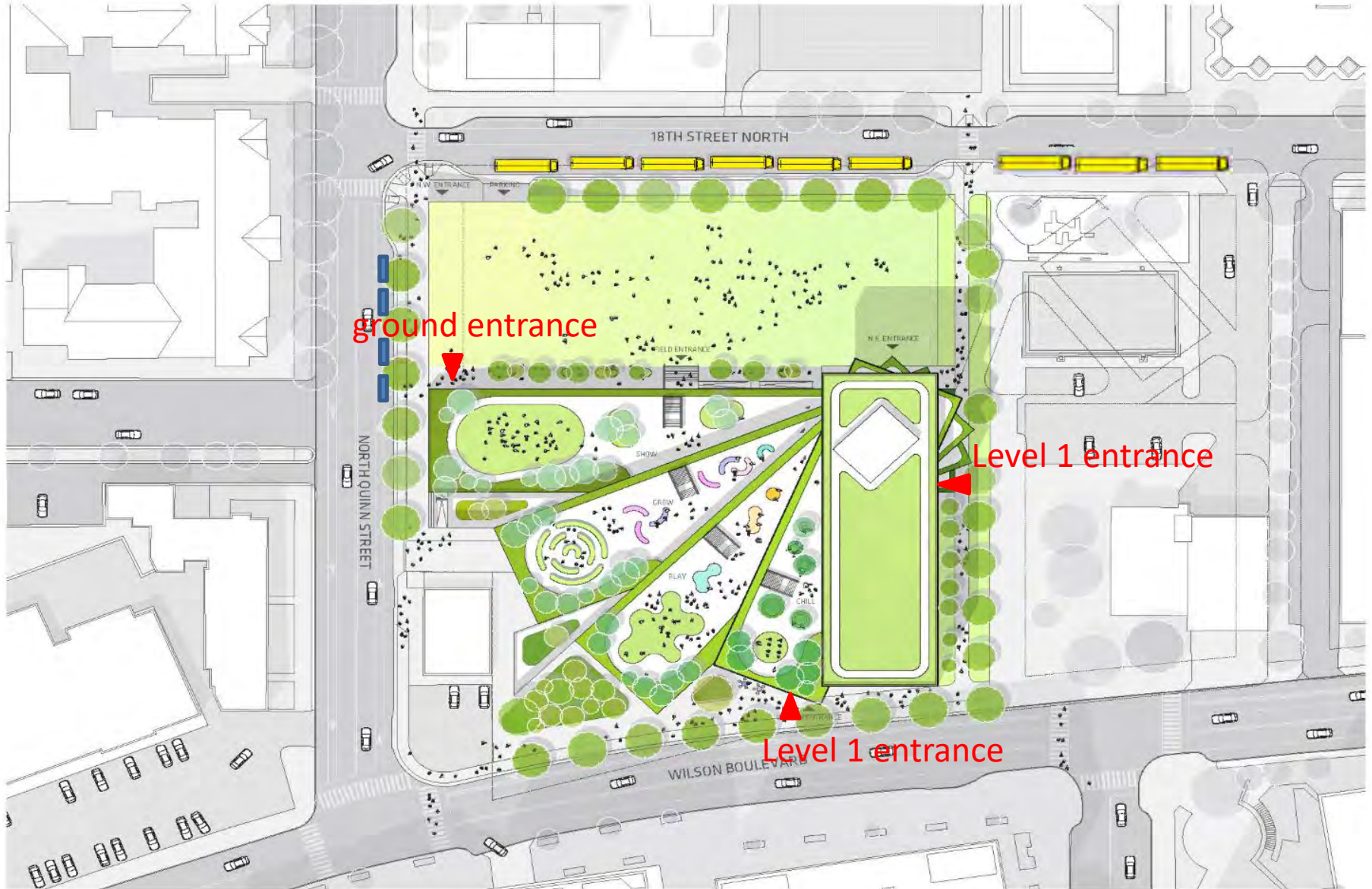
Factors include:

- Bell times
- Morning 'zero' period (no APS-provided bus service)
- Afternoon sports and late buses





# THE FINAL SITE PLAN

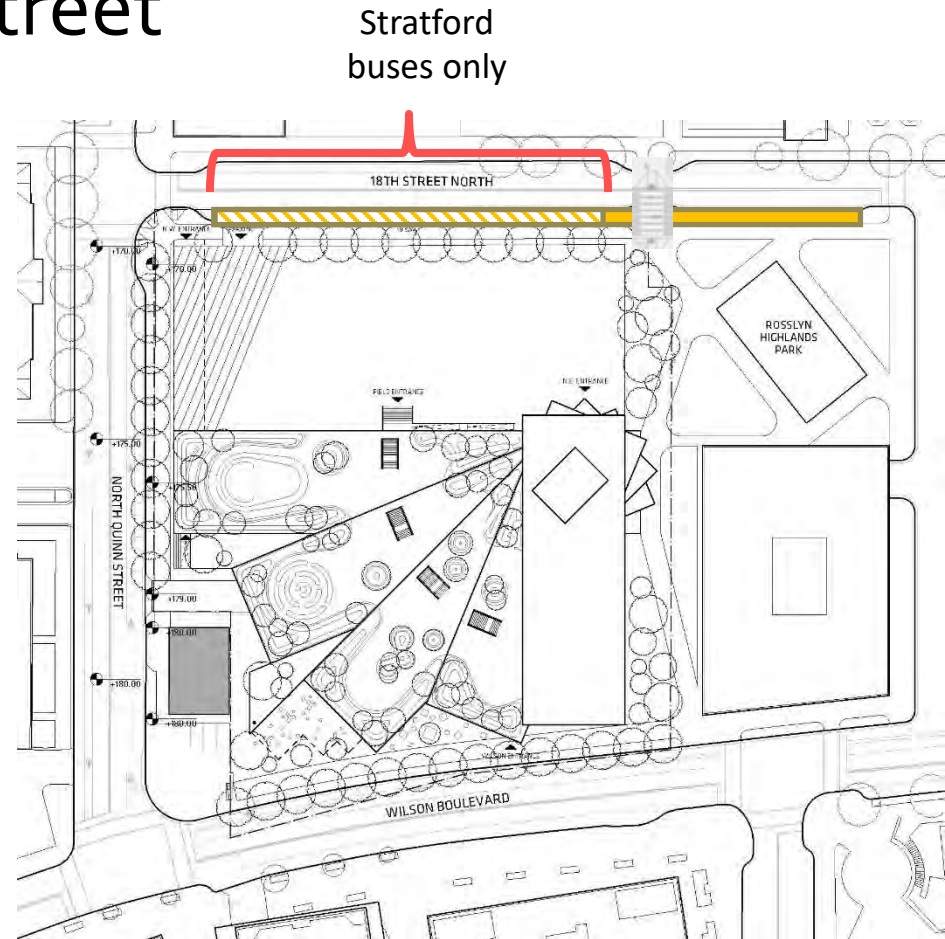


# Arrival and Dismissal



## School buses on 18<sup>th</sup> Street

- 30 minute earlier start for Stratford
- No other traffic between New Street and Quinn



# Stratford Arrival and Dismissal Curbside Needs



- Space for all buses to dwell, unload and load students at the same time for both arrival and dismissal
- Maneuvering space for staff to unload and load students, including for wheelchair lifts
- Minimal travel distance between bus and school door



# Recommendations for Stratford Arrival and Dismissal



- Recreate the current environment for Stratford students at Wilson site
  - Limited access to 18<sup>th</sup> Street and parking restrictions
  - All buses staged at one time on 18<sup>th</sup> Street
  - Build a flush curb






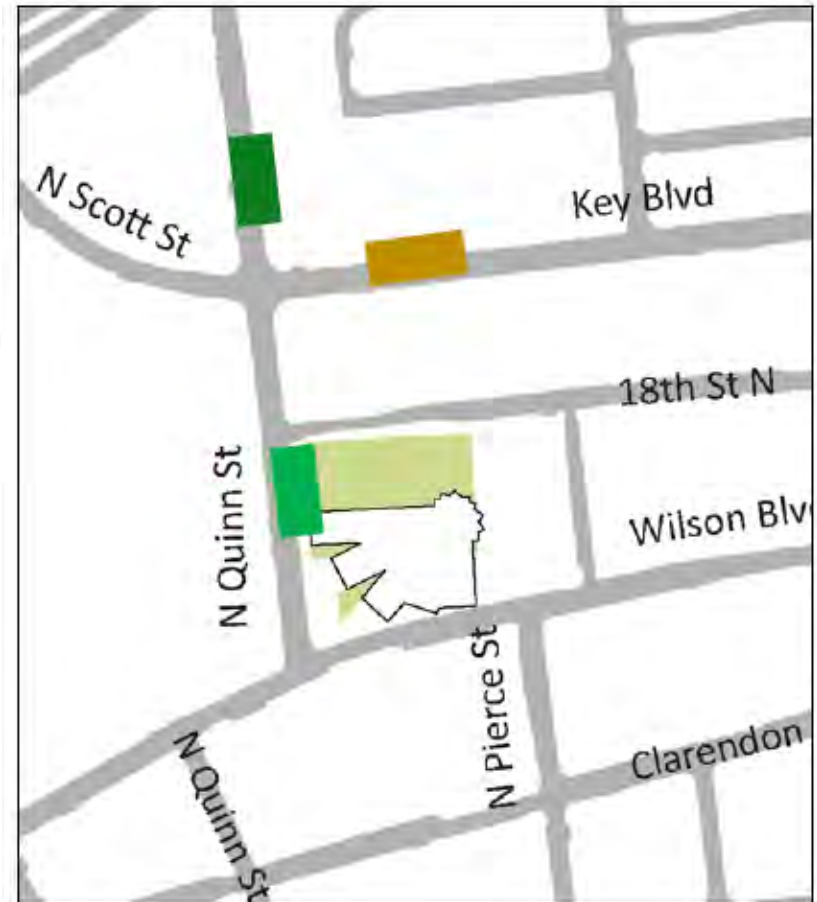


# Arrival and Dismissal



## Parent drop-off and pick-up

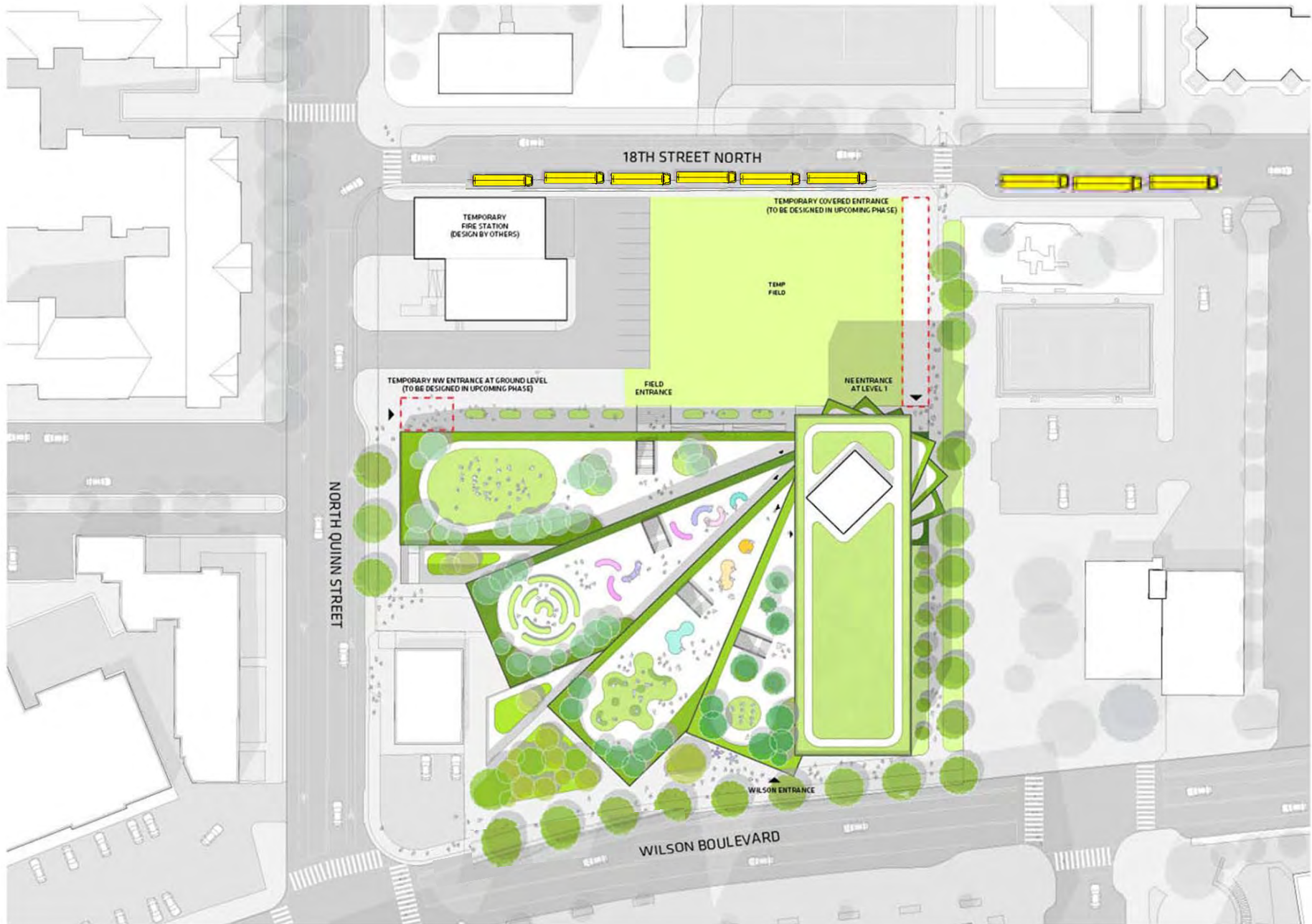
- Various locations:
  -  East side of N. Quinn
  -  Both sides of Key, east of N. Quinn
  -  Both sides of N. Quinn, north of Key
- May refine signage or locations, if needed, after several months' observation





# INTERIM SITE PLAN AND OPERATION

# INTERIM SITE PLAN WITH TEMPORARY FIRE STATION AND TEMPORARY ENTRANCES



# Arrival and Dismissal



Compared to final site plan and operation:

**SAME:** All school buses on 18<sup>th</sup> Streets

*DIFFERENT:* All bussed students enter at east end of school

*DIFFERENT:* ADA parking on east side of Quinn Street

*DIFFERENT:* Quinn Street parent drop-off option shifted to Wilson Boulevard






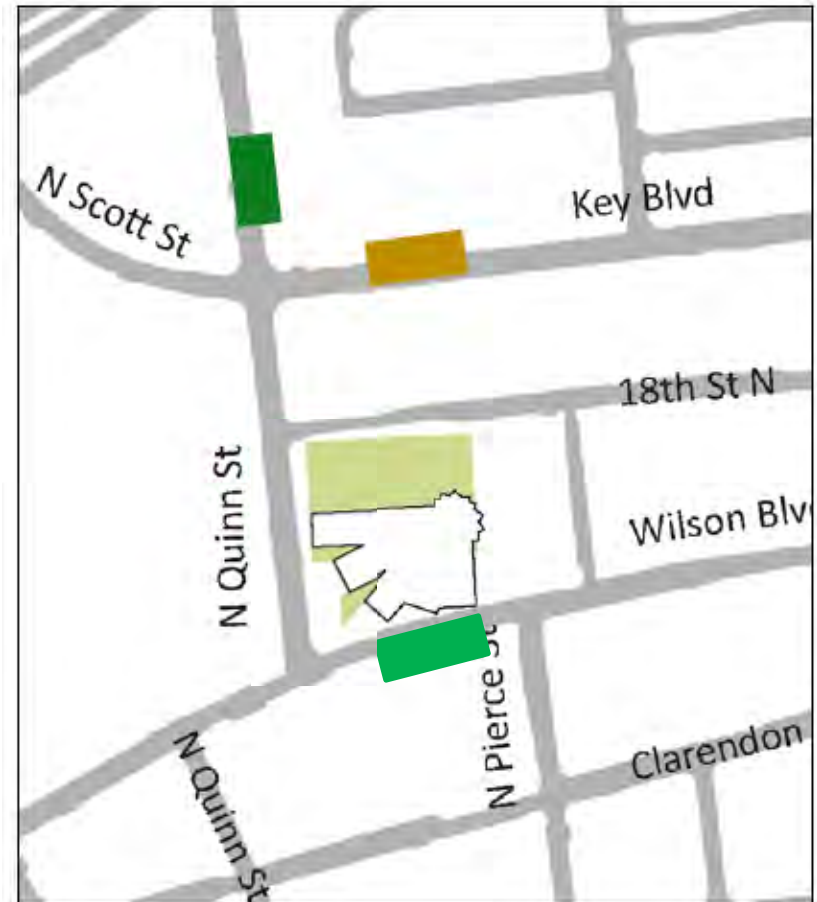
# Arrival and Dismissal



## Parent drop-off and pick-up options

- Wilson replaces east side of N. Quinn

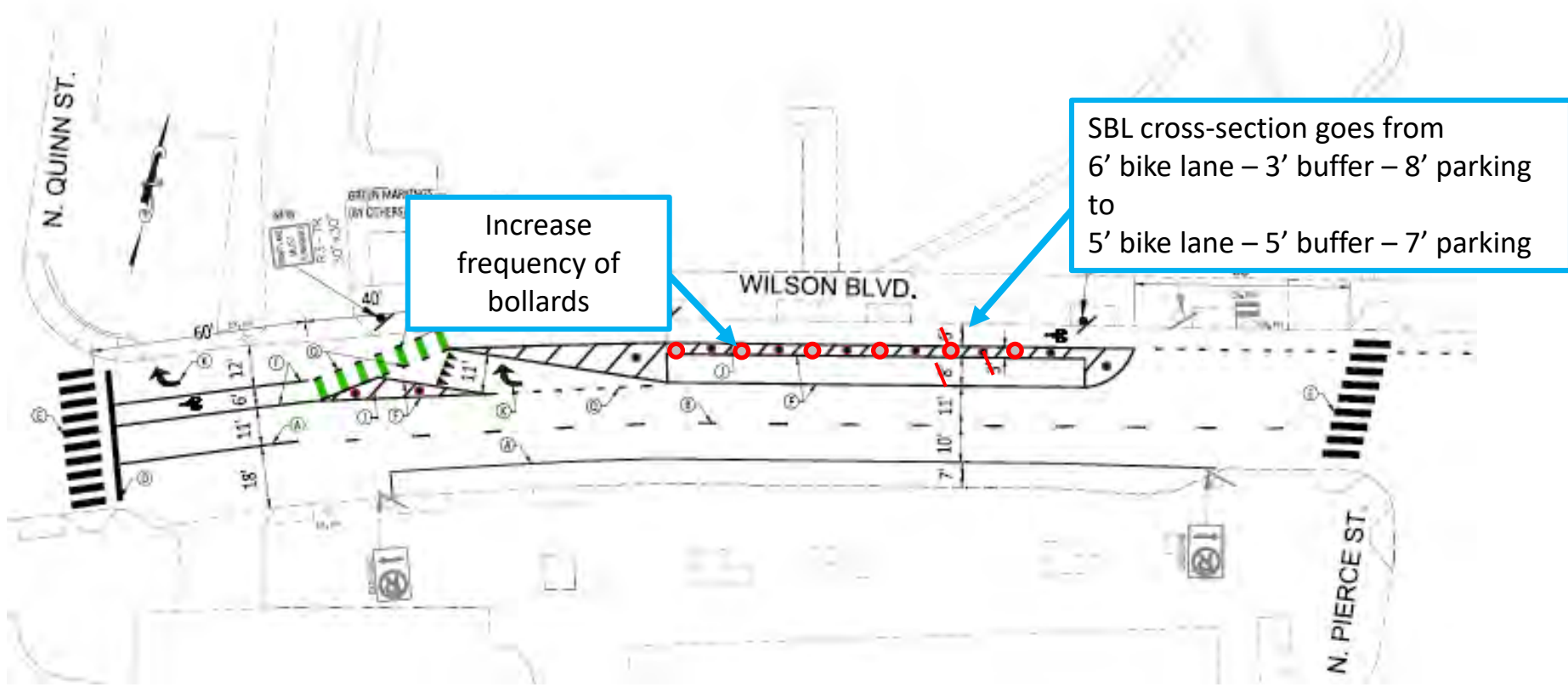
-  North side of Wilson
-  Both sides of Key east of N. Quinn
-  Both sides of N. Quinn, north of Key





# Wilson Boulevard Separate Bike Lane

Interim Parent Drop-off: Crossing Separated Bike Lane





# PARKING



## School Day

- Staff – all day
- Visitors – short duration
- Students – not provided

## Evenings and Weekends

- Events – up to six hours





# Calculating Parking Demand



## Two Methods

1. Arlington County Zoning Ordinance
2. Site-specific Information

## Core Assumptions

- There will be a significant change to the travel mode share for both staff and visitors
- This site will not include parking for students

# Staff and Visitors: Arlington County Zoning



Parking for...	Based on...	Ratio	Number of spaces
Middle School	275 Students	1 space per 7.5 students	37
High School	500 Students	1 space per 10 students	50
Visitors*	275 Students	1 space per 40 students	7
<b>TOTAL</b>			<b>94</b>

\*Zoning ordinance does not include a requirement for visitors for high schools

# Events: Arlington County Zoning



## Increases for public assembly spaces:

Main Gymnasium	8,000 sq. ft., 1 space per 50 sq. ft.	160
Auditorium Theater	400 seats, 1 space per 10 seats	40
Black Box Arena	1,200 sq. ft., 1 space for 50 sq. ft.	24
Gym/Multipurpose Room	3,000 sq. ft., 1 space per 50 sq. ft.	60
<b>TOTAL FOR PUBLIC ASSEMBLY</b>		<b>284</b>

# Method 2: Site-Specific Information



## Staff and visitor travel mode share assumptions

	Personal vehicle	Carpool
Staff	55%	8%
Visitors	75%	0%

Employee travel mode shares elsewhere in the County							
	Walk	Bike	Personal Vehicle	APS Vehicle	Carpool	Transit	Other
Woodlawn/Stratford	3%	5%	<b>88%</b>	0%	<b>3%</b>	0%	1%
Key Elementary	6%	3%	<b>81%</b>	2%	2%	6%	2%
Washington and Lee	8%	7%	<b>71%</b>	0%	<b>5%</b>	8%	1%
Arlington County Workers	3-5%		<b>53-55%</b>	N/A	<b>11-15%</b>	26-27%	0%
Rosslyn commuters	10%		<b>43%</b>	N/A	<b>6%</b>	41%	0%

# Method 2: Site-Specific Information based on drive rates



Parking for...	Based on...	Mode share	Number of spaces
Staff in personal vehicle	141 Staff	55% in personal vehicle	78
Staff in carpool	141 Staff*	8% in carpool	6
Visitors in personal vehicle	8 Visitors**	75% in personal vehicle	6
<b>TOTAL</b>			<b>90</b>

\*Assumes each carpool has two staff

\*\*Based on current visitors, factored up for 775 target enrollment

# Capturing Multimodal Benefits



- TDG analysis indicates that 90-94 spaces are needed for daily school uses
- Site is a first for the County and APS
- Expect mode shift over time as:
  - Students, staff and parents become comfortable using transit
  - Staff lives closer to school through natural staff changes
  - TDM programs continue to take hold

# APS Go! Program Goals



Smart Routes, Smart Choices

MEASURE	2014 DATA	2021 TARGET
Student Walk/Bike Rate	22%	30%
Staff Drive Rate	88%	75%
Percentage of schools with active TDM programs*	21%	100%

\*Schools with "active TDM programs" are defined as those with an existing site-specific TDM plan and some related programs underway.

# Outreach to parents, students & staff



## Wilson's Transportation Options

**Ride Sharing**  
Ride sharing helps the environment by reducing vehicle emissions and traffic congestion. Sign up now to find ride sharing buddies!

**SchoolPool Matching** (helps parents connect to form carpools, walking groups or biking groups to and from school):  
[www.commuterconnections.org/schoolpool](http://www.commuterconnections.org/schoolpool)

**Bus & Metro Services**  
Rosslyn is the closest Metrorail Station and serves the Orange, Blue and Silver Lines.

Arlington Transit (ART) and Metrobus routes:

- ART 43: Rosslyn/Crystal City
- ART 45: Rosslyn/Columbia Pk
- ART 61: Courthouse
- ART 62: Ballston
- ART 77: Shirlington
- Metrobus 3Y: McPherson Sq
- Metrobus 4BE: Seven Corners
- Metrobus 5A: Dulles Airport
- Metrobus 10R: Alexandria
- Metrobus 38B: Ballston/Farragut Square
- Circulator: Rosslyn, Georgetown, Dupont Circle

**Additional Information:**

- ❖ [arlingtontransit.com](http://arlingtontransit.com)
- ❖ [wmata.com](http://wmata.com)

**Transit Apps**  
Download these apps to make your commute easier:

- ❖ [Citymapper](#)  
The ultimate transit app (subway, train, bus, metro, bikes)
- ❖ [Ridescout](#)  
All transit, bus, bike, taxi, rides-on-demand, etc in one view
- ❖ [Transit](#)  
Displaying nearby options and departure times

**Biking and Walking**  
Biking and walking to school creates healthy minds and bodies for everyone!

- Walk ¼ or ½ mile from a parking spot, the bus stop, or a drop-off point.
- Wilson is near the shared-use Custis Trail.
- Capital Bikeshare: join, take a bike, ride and return. Closest stations:
  - Key Blvd & N Quinn St
  - Wilson Blvd & Ft. Myer Dr
  - Lynn St & 19<sup>th</sup> St N
  - Clarendon Blvd & Pierce St

**Additional Information:**

- ❖ [capitalbikeshare.com](http://capitalbikeshare.com)
- ❖ [BikeArlington.com](http://BikeArlington.com)
- ❖ [WalkArlington.com](http://WalkArlington.com)

**Real-Time Rider Tools**  
Real-time information at your finger tips:

- ❖ [Metro Nextbus](#)  
For GPS-based arrival times for Metrobus
- ❖ [ART Realtime Arrivals](#)  
Find out when the next ART bus will arrive at your stop
- ❖ [Car Free Near Me](#)  
Web app to make it easier to get around without a car
- ❖ [spotcycle.net](#)  
App for Capital Bikeshare with real-time bike availability

**Arlington Public Schools**



# Student iRide Program, Staff Incentives



# TDM and the Wilson site



- Begin the transition next year so the school community is ready when the new building opens
  - Can learn from Boston's Riding the T program
- Build on APS Go! and the Use Permit Requirements
- Expect mode shift for staff over time





# OFF-SITE RECOMMENDATIONS

# Off-site infrastructure: ADA



Ensure all sidewalks within 2 blocks of schools meet PROWAG\*:

- Uneven surfaces on sidewalks and crosswalks
- Missing and non-compliant curb ramps
- Non-compliant cross-slopes at driveway crossings

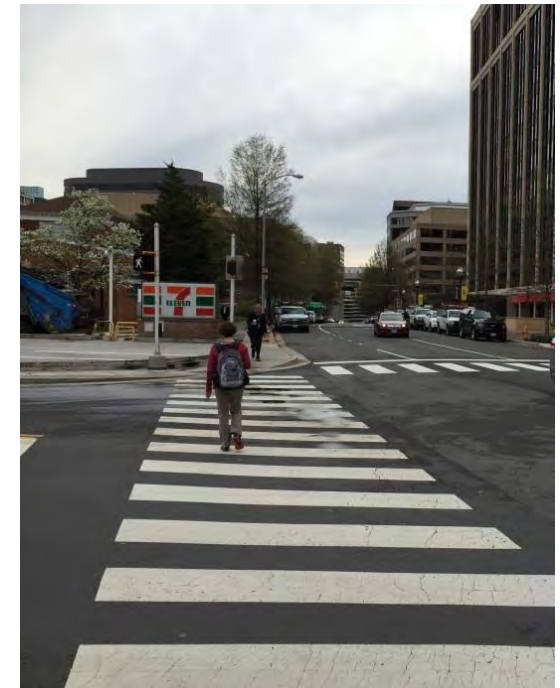


\*Public Rights of Way Accessibility Guidelines

# Off-site infrastructure: ADA



- Align curb ramps with crosswalks and widen curb ramps to increase capacity
- Widen corner at Wilson and North Quinn to increase pedestrian capacity



# Off-site infrastructure: Other



- Covered bicycle parking convenient to school entrances
- Continued work towards lower stress bicycle network, especially at intersections
- Additional changes may be needed based on recommendations from Penzance development traffic study