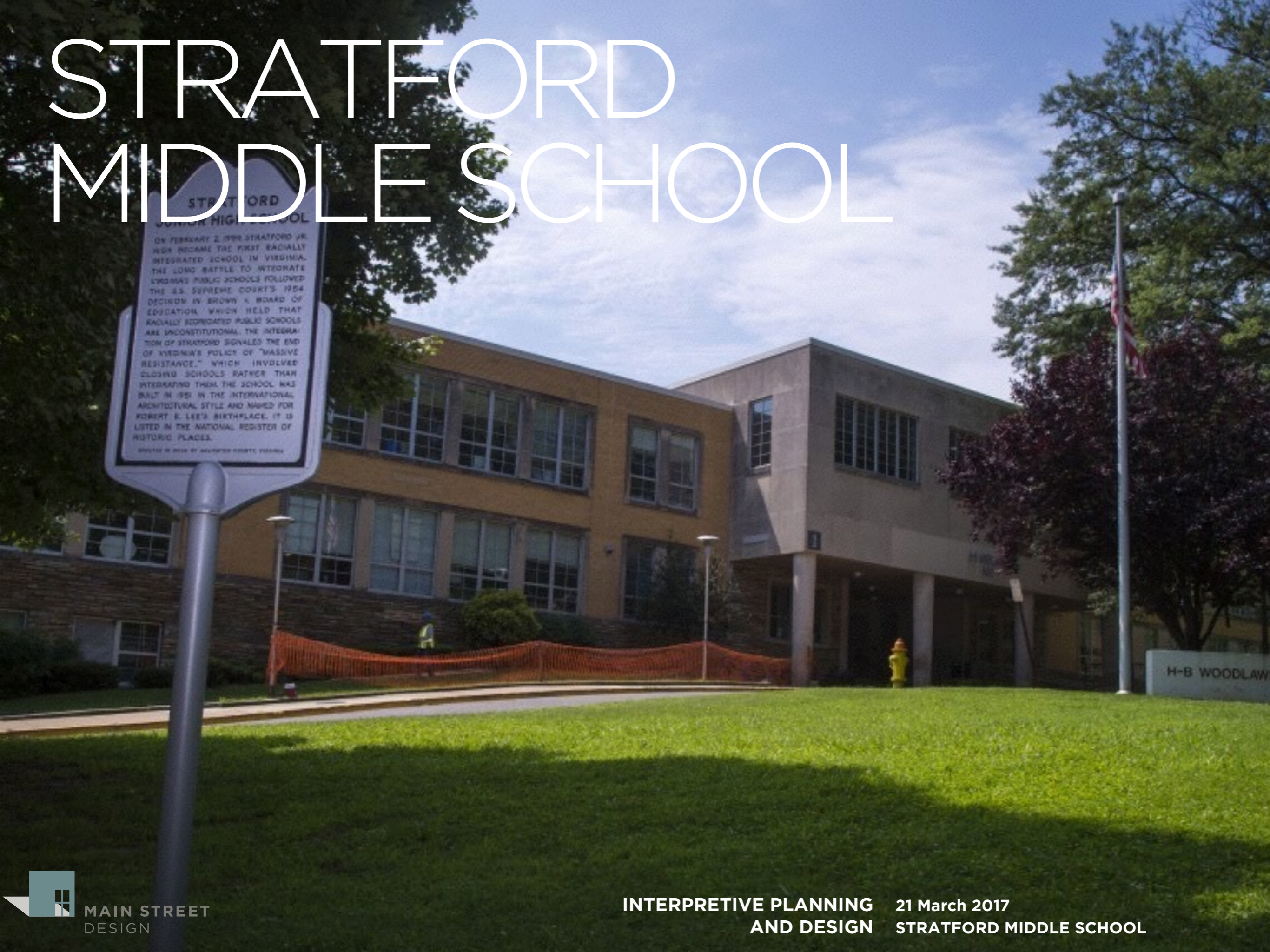


STRATFORD MIDDLE SCHOOL

STRATFORD
JUNIOR HIGH SCHOOL

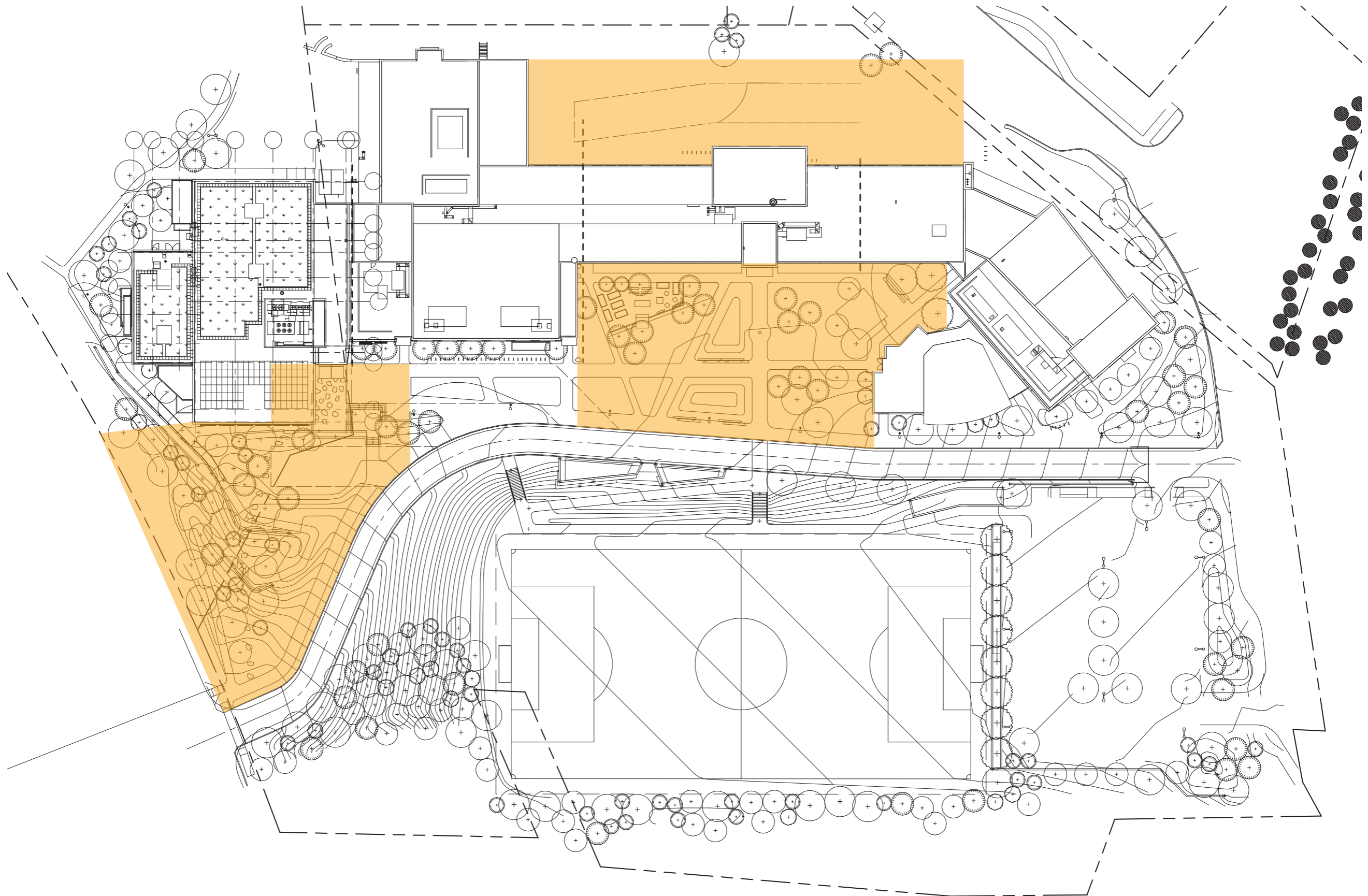
ON FEBRUARY 2, 1956, STRATFORD JR. HIGH BECAME THE FIRST RACIALLY INTEGRATED SCHOOL IN VIRGINIA. THE LONG BATTLE TO INTEGRATE VIRGINIA'S PUBLIC SCHOOLS FOLLOWED THE U.S. SUPREME COURT'S 1954 DECISION IN BROWN V. BOARD OF EDUCATION, WHICH HELD THAT RACIALLY SEGREGATED PUBLIC SCHOOLS ARE UNCONSTITUTIONAL. THE INTEGRATION OF STRATFORD SIGNALED THE END OF VIRGINIA'S POLICY OF "MASSIVE RESISTANCE," WHICH INVOLVED CLOSING SCHOOLS RATHER THAN INTEGRATING THEM. THE SCHOOL WAS BUILT IN 1951 IN THE INTERNATIONAL ARCHITECTURAL STYLE AND NAMED FOR ROBERT E. LEE'S BIRTHPLACE. IT IS LISTED IN THE NATIONAL REGISTER OF HISTORIC PLACES.

SHOWN AS BUILT BY ALLIANCE COURT, VIRGINIA

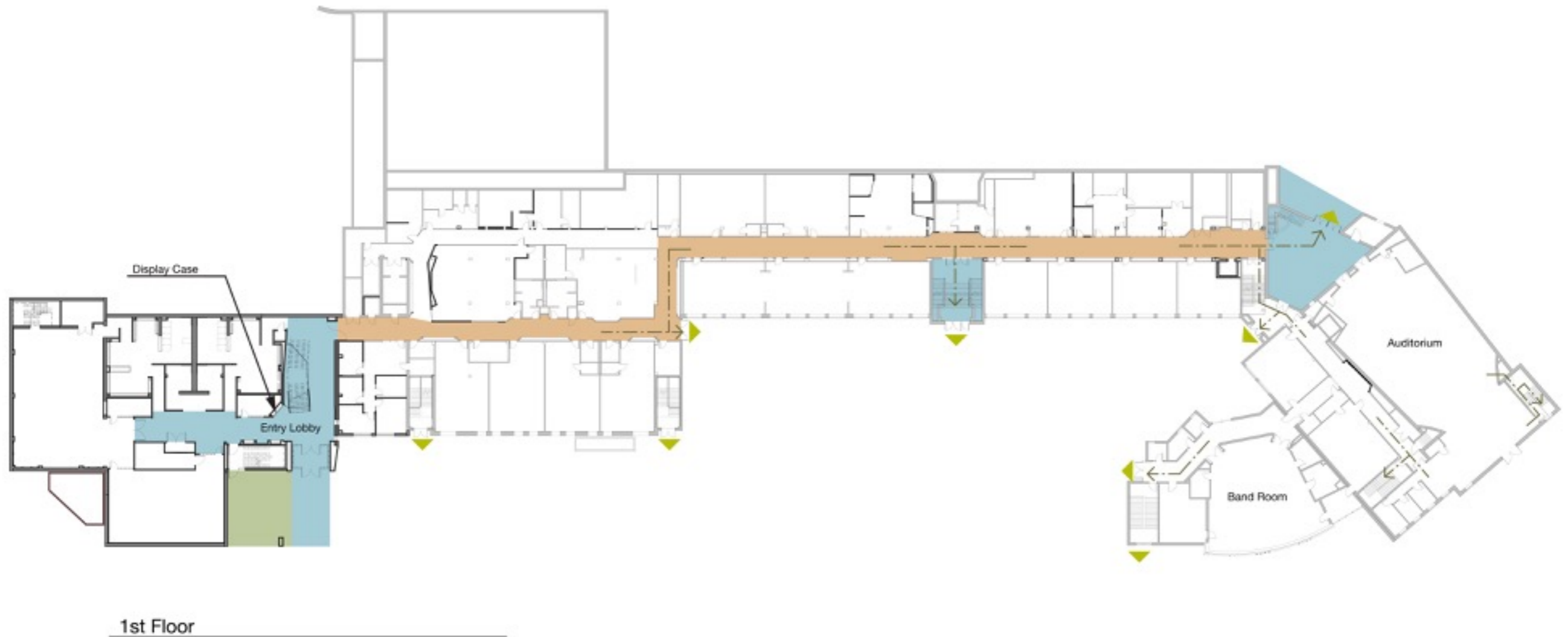
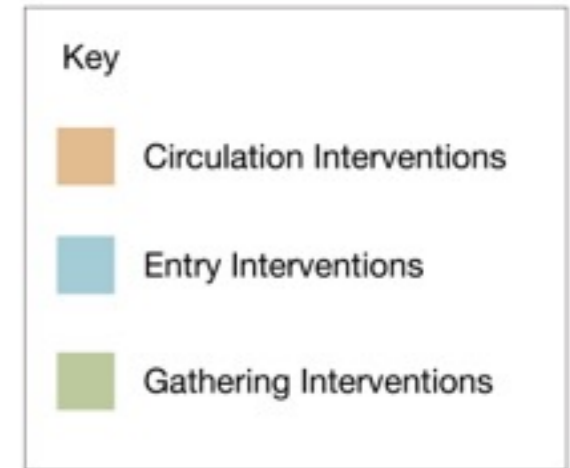


H-B WOODLAW

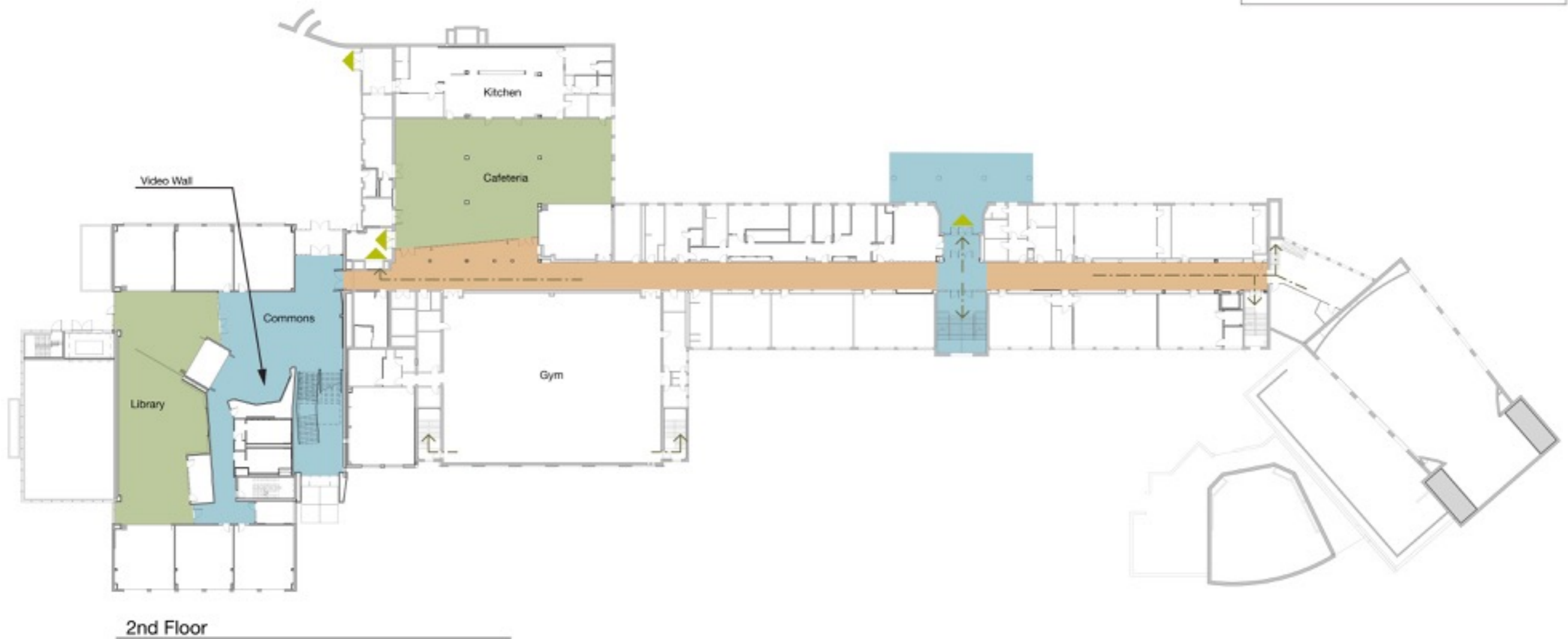
INTERPRETATION OPPORTUNITIES - EXTERIOR



INTERPRETATION OPPORTUNITIES



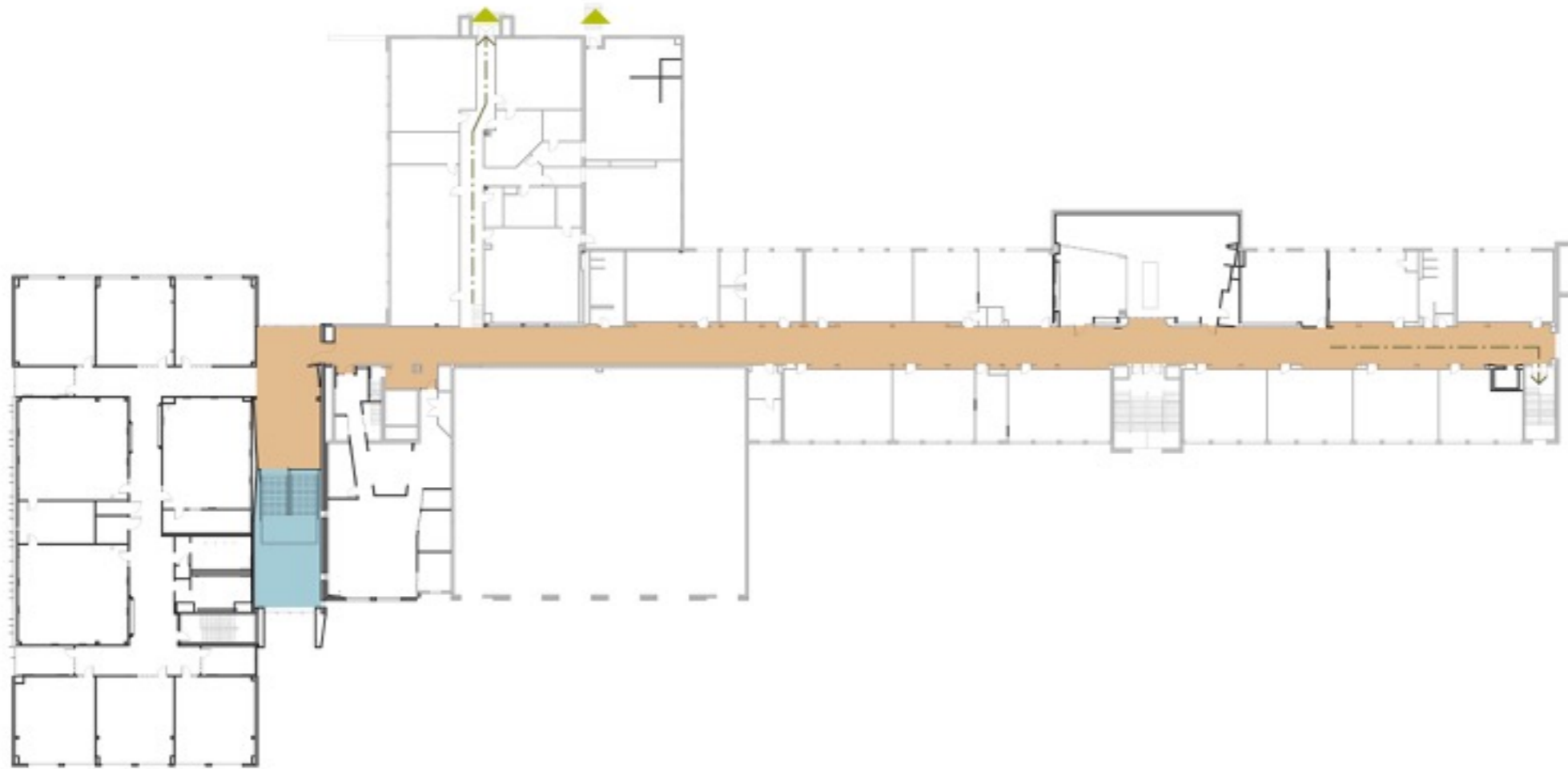
INTERPRETATION OPPORTUNITIES



INTERPRETATION OPPORTUNITIES

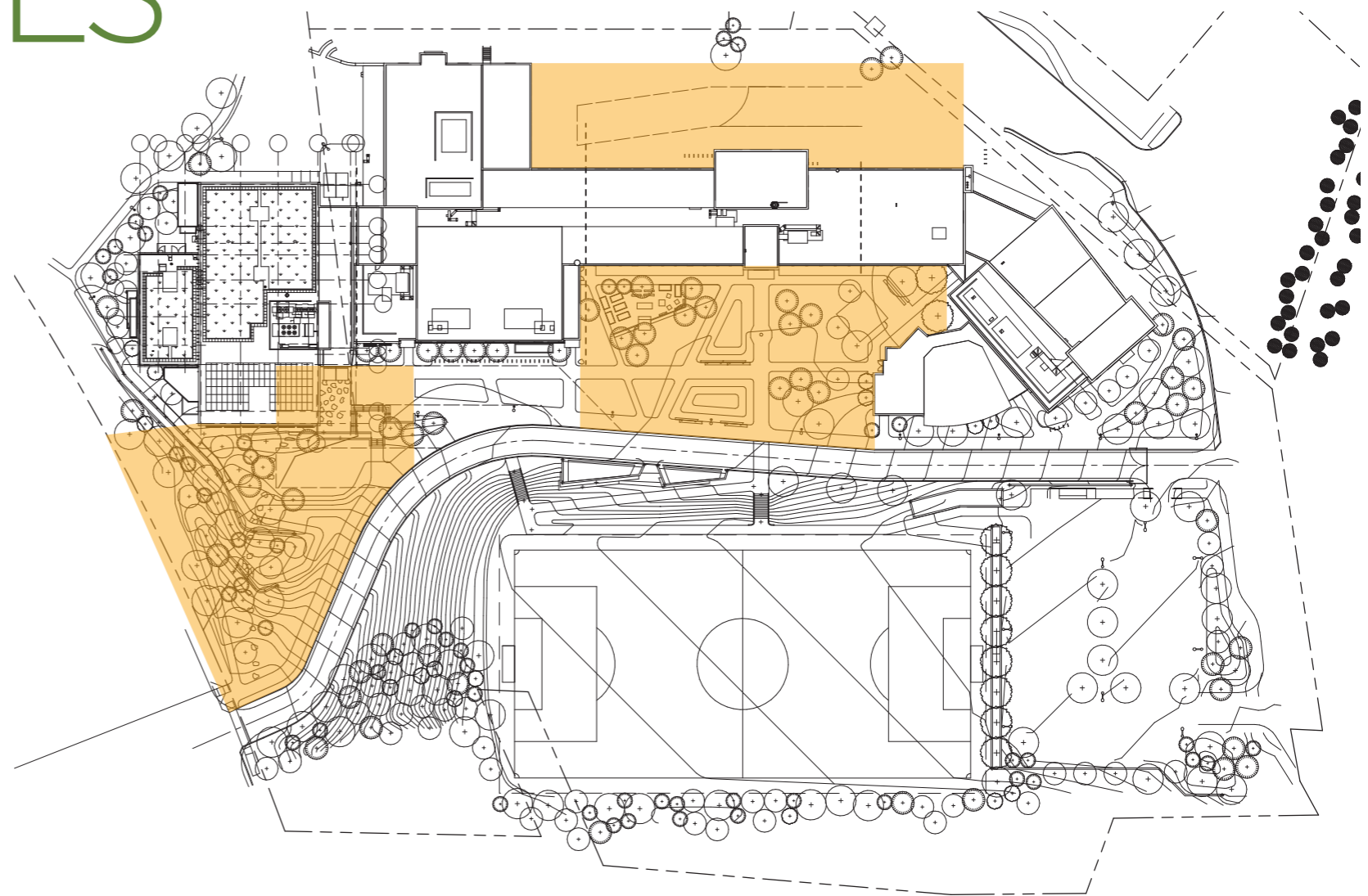
Key

- Circulation Interventions
- Entry Interventions
- Gathering Interventions



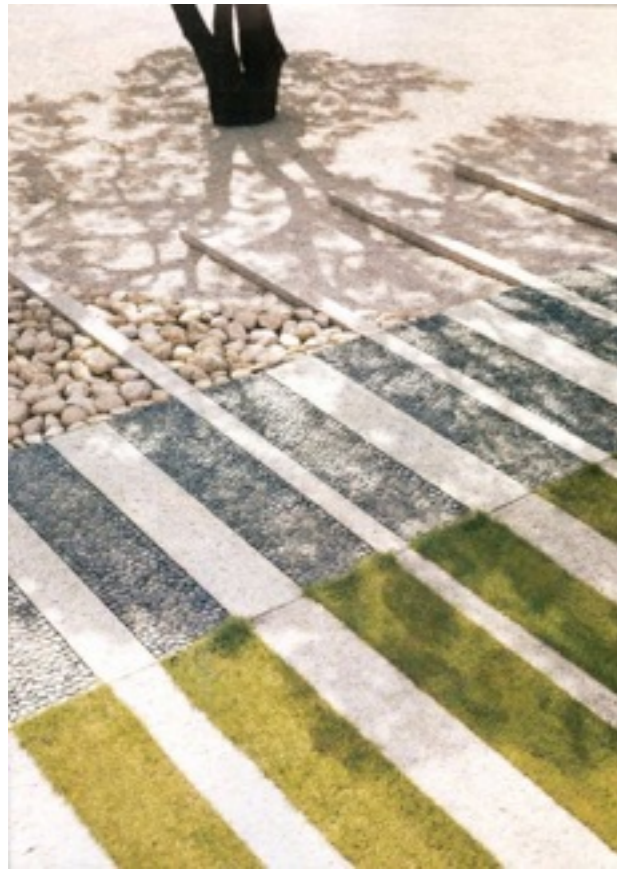
3rd Floor

EXTERIOR INTERPRETIVE EXPERIENCE SPIRIT IMAGES

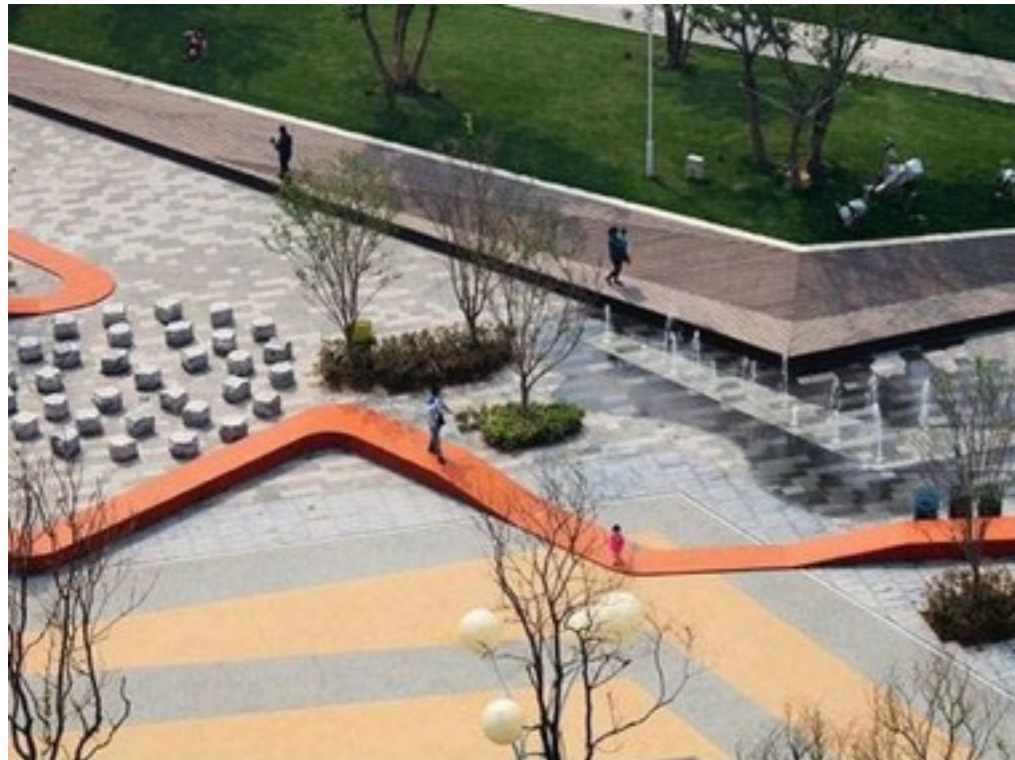






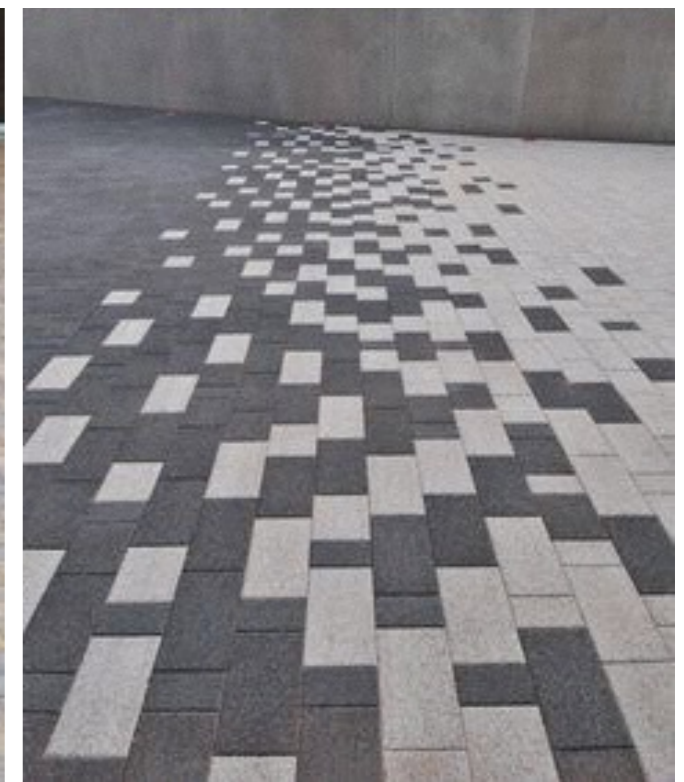








INSPIRATION IMAGES - EXTERIOR

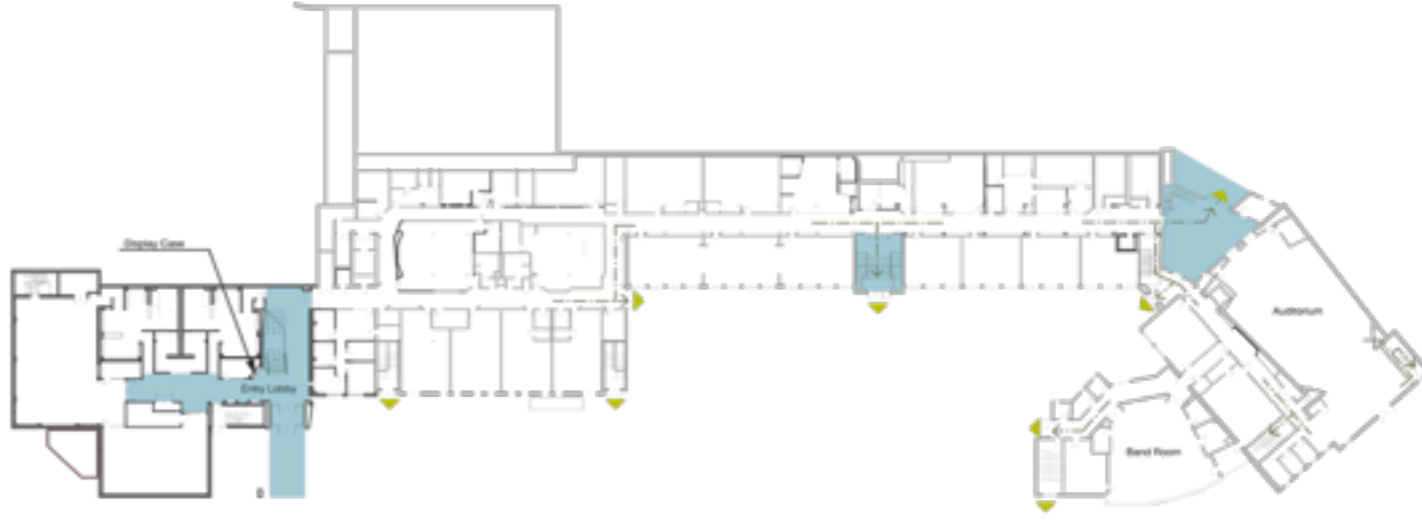
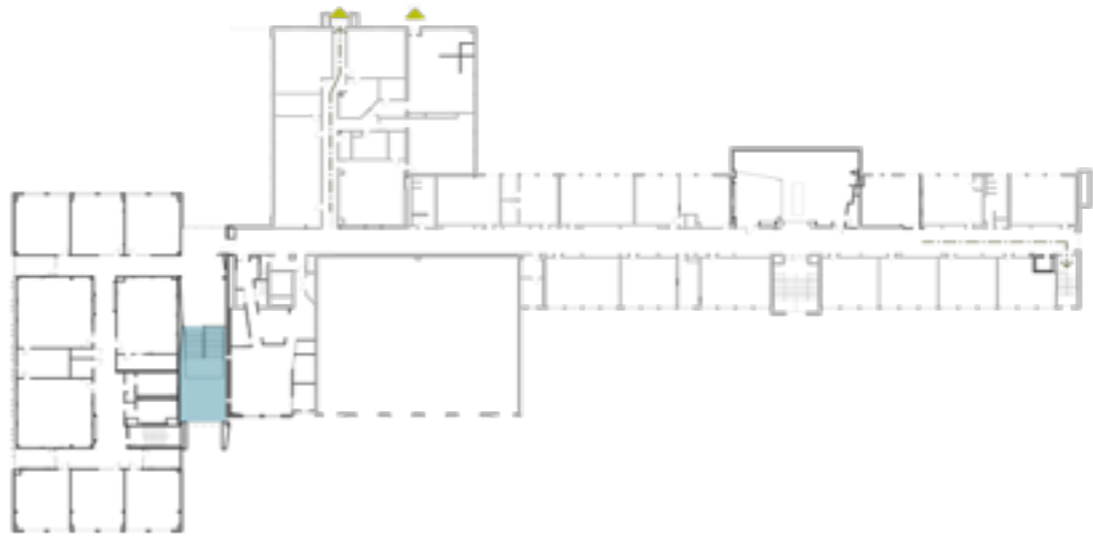


INSPIRATION IMAGES - EXTERIOR

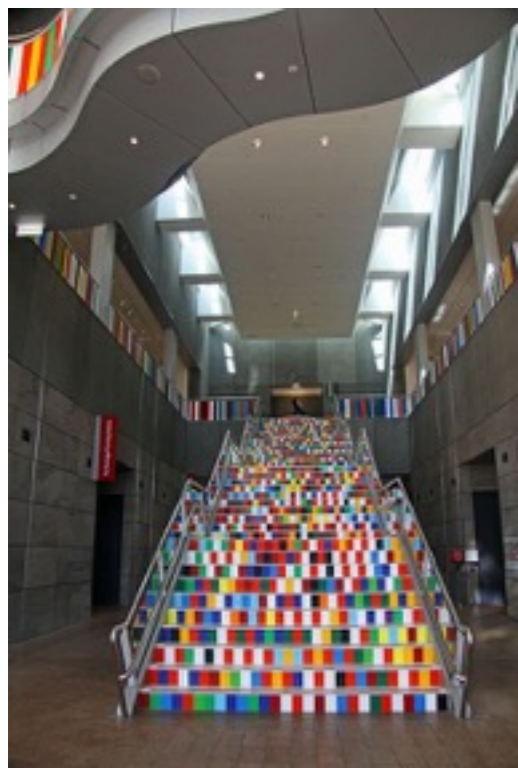
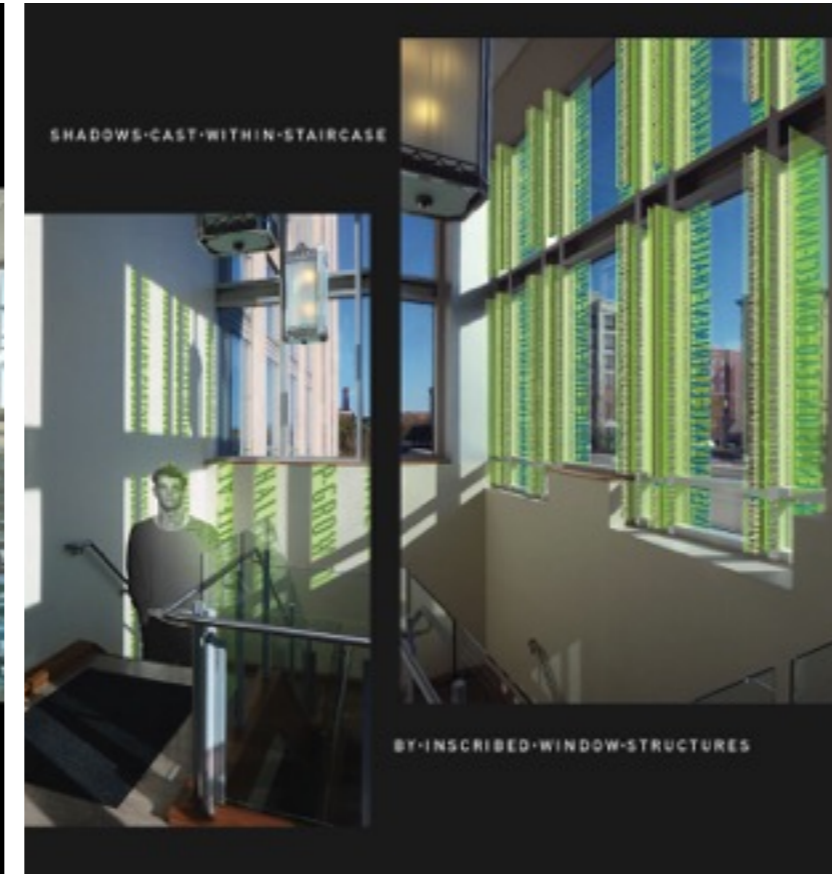


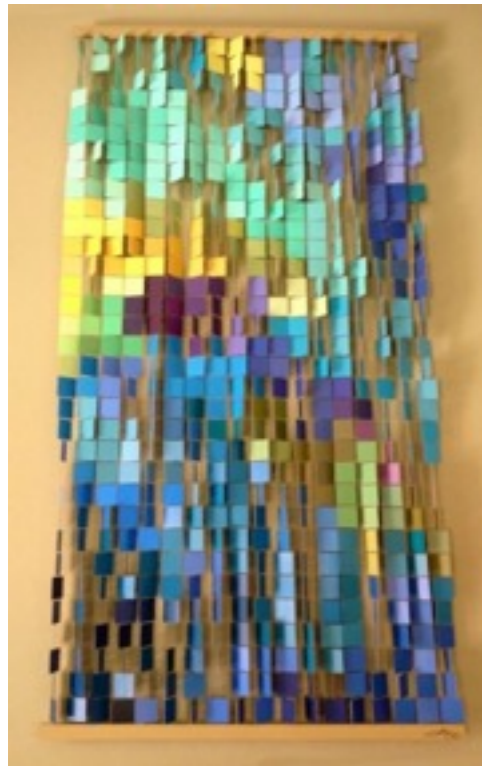


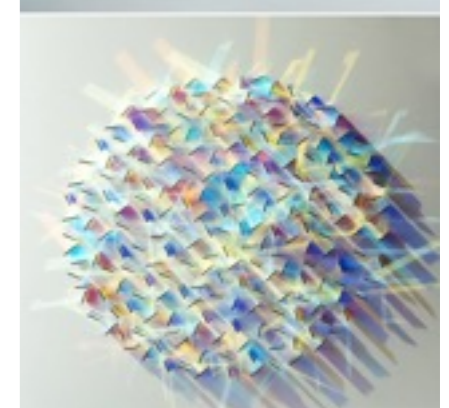
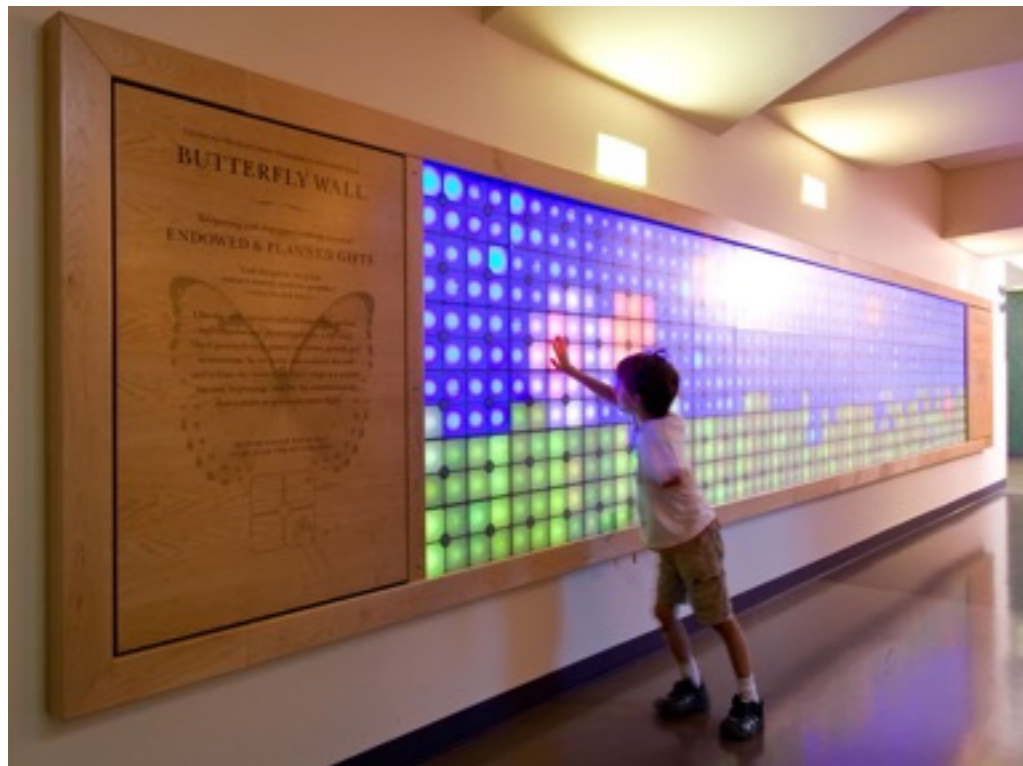
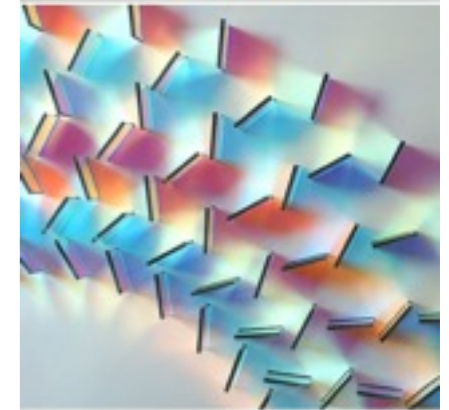
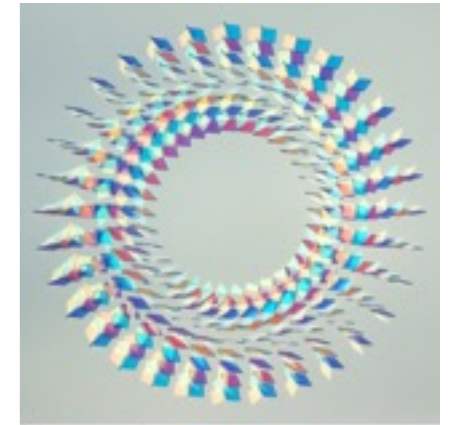
ENTRY INTERPRETIVE EXPERIENCE SPIRIT IMAGES







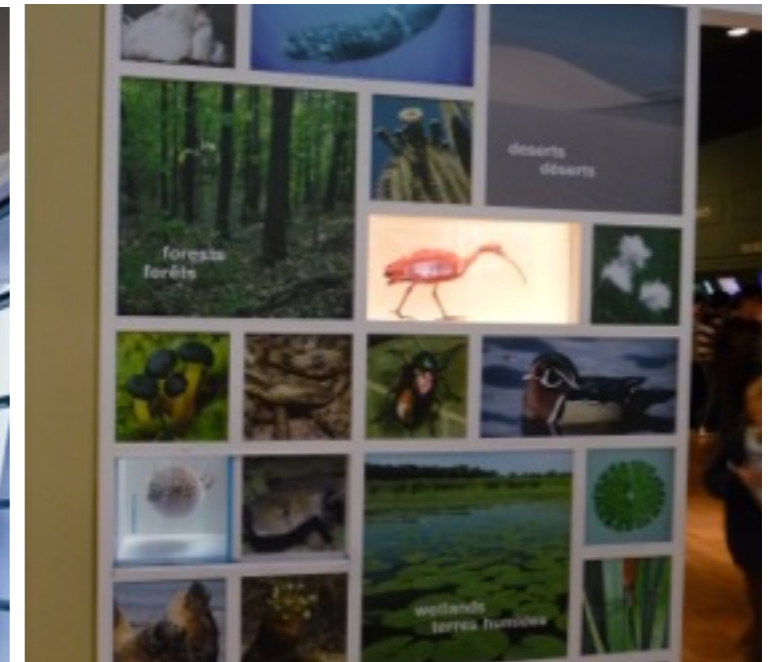




INSPIRATION IMAGES - ENTRY



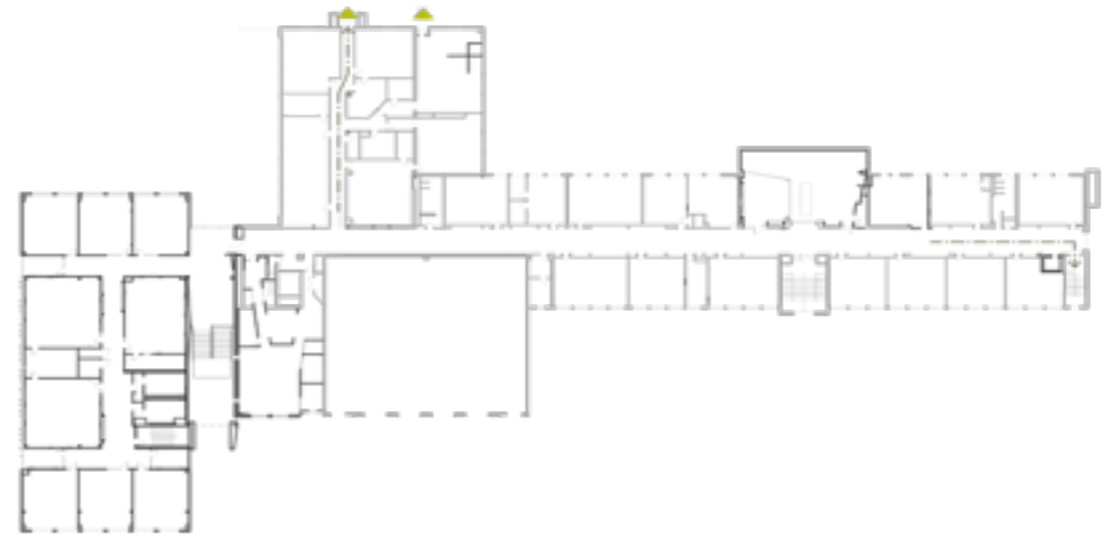
INSPIRATION IMAGES - ENTRY



INSPIRATION IMAGES - ENTRY



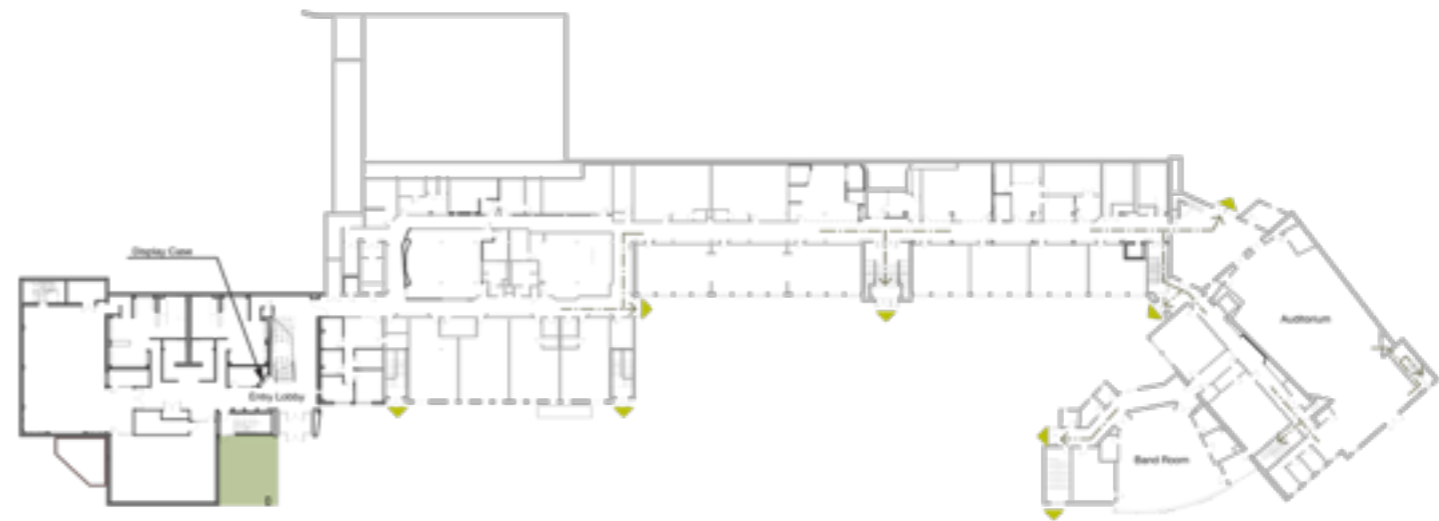
GATHERING INTERPRETIVE EXPERIENCE SPIRIT IMAGES



3rd Floor



2nd Floor



1st Floor

INSPIRATION IMAGES - GATHERING



CIRCULATION INTERPRETIVE EXPERIENCE SPIRIT IMAGES

