

# STRATFORD MIDDLE SCHOOL RENOVATION AND ADDITION

ARLINGTON PUBLIC SCHOOLS

COUNTY BOARD  
18 MARCH 2017



QUINN EVANS  
ARCHITECTS

# OVERVIEW | 1

# ARLINGTON PUBLIC SCHOOLS

## 2015-16 ACADEMIC HIGHLIGHTS

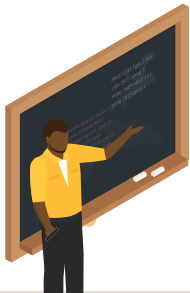


A YEAR OF PROGRESS ACHIEVEMENT & EXCELLENCE

APS Graduates were awarded  
**\$32M**  
IN SCHOLARSHIPS



**79%** COMPLETED ONE OR MORE college level courses



- ✓ Advanced Placement
- ✓ Dual-Enrollment Course
- ✓ International Baccalaureate



**1,351**

GRADUATES IN THE CLASS OF 2016

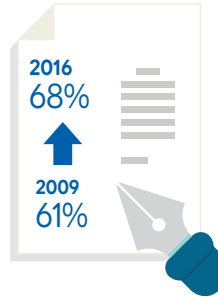
**97%**  
GRADUATION RATE

for students in the three comprehensive high schools for all of their APS high school career

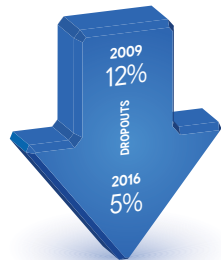


**67.9%**  
OF APS GRADS

earned an Advanced Studies Diploma\* resulting in a 12% increase since 2009



\* Advanced Studies Diploma is Virginia's most rigorous diploma & paves the way for admission to a two- or four-year college

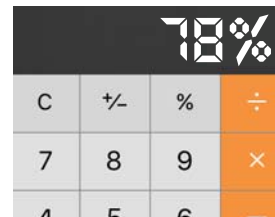


APS DROPOUT RATE REDUCED BY  
**52%**  
since 2009

**93%** PLAN TO ATTEND\* a 2 or 4 year college



MORE THAN **3/4** OF STUDENTS take Algebra I or Geometry by 8th grade



### APS AMONG TOP SCHOOL SYSTEMS IN THE U.S.

<p>APS ranked in <b>TOP 3%</b> in the Nation</p>	<p>APS ranked <b>#59</b> in the U.S.</p>	<p>APS ranked in <b>TOP 6%</b> in the Nation</p>
--	--	--

### APS STUDENTS SURPASS THEIR PEERS

#### SAT Average Scores

APS	1661
VA	1535
U.S.	1484

#### ACT Composite Scores

APS	25.4
VA	23.1
U.S.	20.8

#### IB Pass Rates

APS	97%
VA	72%
WORLD	79%

### VIRGINIA STANDARDS OF LEARNING (SOL) RESULTS



**ALL APS SCHOOLS**  
are Fully Accredited by VA

# OVERVIEW

## PROJECT APPROVED BY THE SCHOOL BOARD

- 1,000-seat  
Neighborhood Middle  
School
- School opening in  
September 2019
- 40,000 sf addition
- \$36.55M in funding  
available with \$250K  
dedicated to historic  
commemoration



## SUCCESS FACTORS

- **Support Strategy Plan Goal #4 - Provide Optimal Learning Environments**
- **Respect neighborhood context**
- **Improve accessibility and circulation for regular users and emergency services**
- **Safe and functional support for all modes of transportation**
- **Sensitivity to cultural and architectural historic significance**
- **Minimize impacts on open space and environmental resources**
- **Cohesion with adjacent Stratford Park**

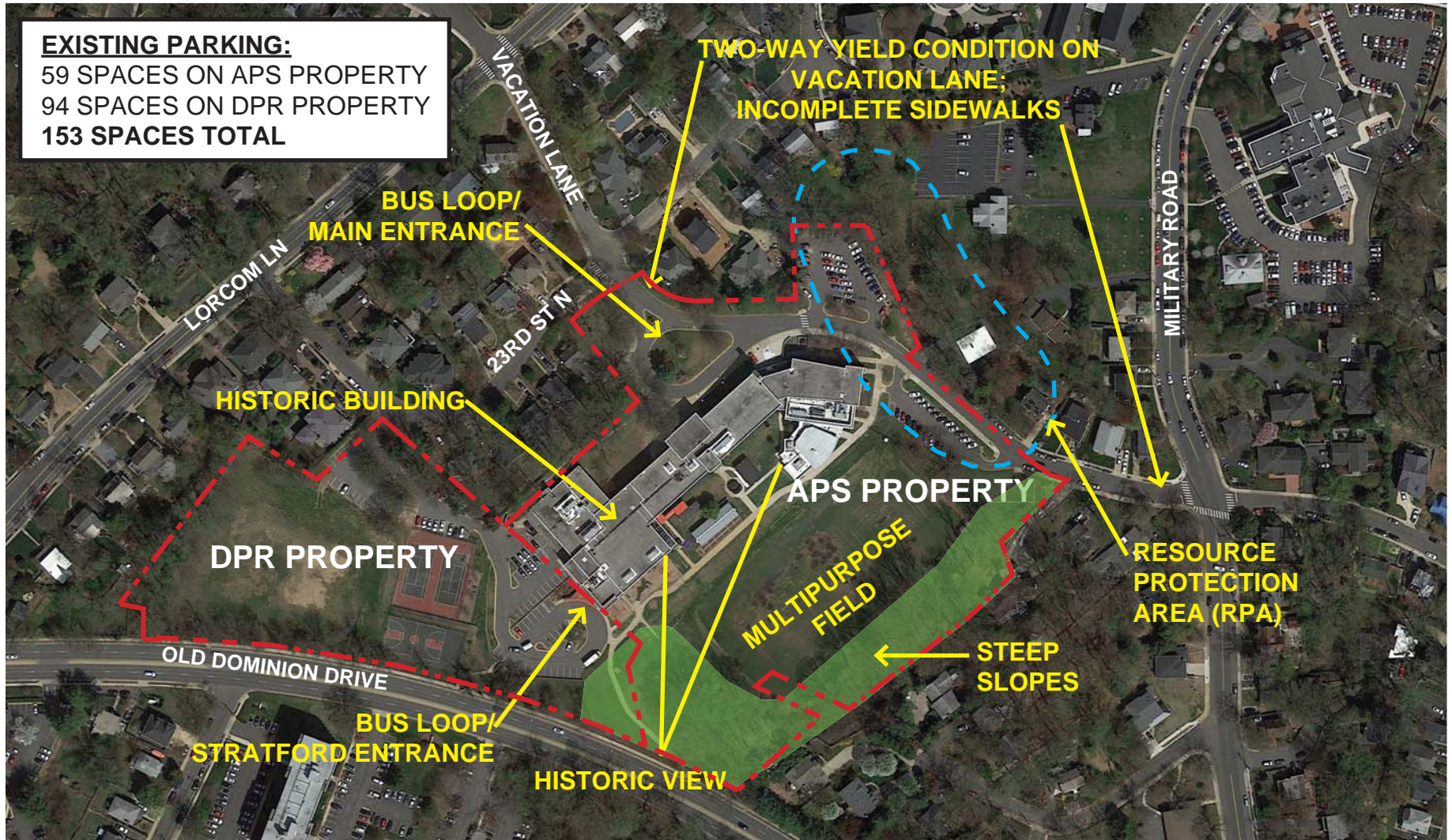
# STAKEHOLDER INVOLVEMENT

- 23 BLPC meetings
- 13 PFRC meetings
- 7 HALRB/DRC meetings/work sessions
- 2 Gallery Walks / Open Houses
- Additional meetings with:
  - Community leaders
  - Department of Parks and Recreation
  - VDOT
  - Arlington County Staff and Commissions
  - School Board Members



# SITE DESIGN | 2

# EXISTING SITE

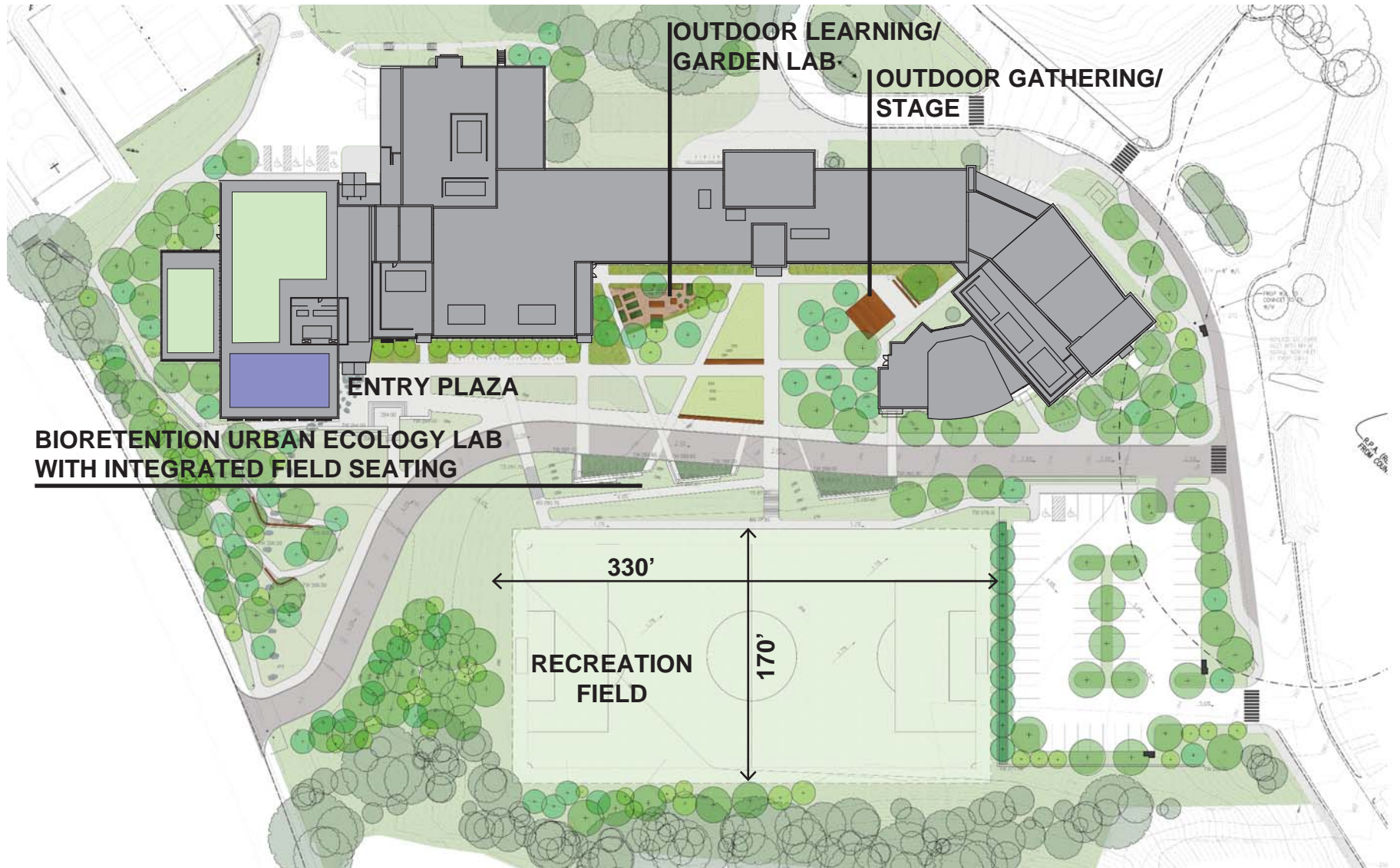




# SITE IMPROVEMENTS



# SITE PLAN



# SITE PLAN

## PARKING

PARKING ANALYSIS		
EXISTING ON-SITE (APS PROPERTY)	59	
EXISTING OFF-SITE (DPR PROPERTY)	94	
EXISTING PARKING (APS + DPR)	153	
ZONING REQUIREMENT (1000 SEAT MS)	159	
ACTUAL APS NEED CALCULATED (TDM/DATA-BASED)	148	
DEDICATED DPR SPACES	10	
<b>TOTAL PARKING REQUIRED</b>	<b>158</b>	
PARKING PROVIDED		
	<i>APS USE</i>	<i>DPR USE</i>
ON-SITE (APS PROPERTY)	106	0
OFF-SITE (DPR PROPERTY)	28	10
<b>SUBTOTAL (BY USE; APS + DPR PROPERTY)</b>	<b>134</b>	<b>10</b>
<b>SUBTOTAL (APS + DPR PROPERTY)</b>	<b>144</b>	
OFF-SITE (STREET NETWORK)	14	0
<b>TOTAL PARKING PROVIDED (BY USE)</b>	<b>148</b>	<b>10</b>
<b>TOTAL PARKING PROVIDED</b>	<b>158</b>	

# SITE PLAN

## PARKING

**OFF-SITE (DPR PROPERTY):  
28 SPACES + 10 SPACES  
FOR DPR USE**

**6 SPACES**

**OFF-SITE (STREET):  
14 SPACES**

**NORTH LOT  
38 SPACES**

**VACATION  
LANE LOT  
62 SPACES**

**TOTALS:  
144 SPACES ON APS  
+ DPR PROPERTIES**

**14 SPACES ON  
STREET**

# EXISTING SITE PEDESTRIAN NETWORK

## PEDESTRIAN CIRCULATION



# SITE PEDESTRIAN NETWORK

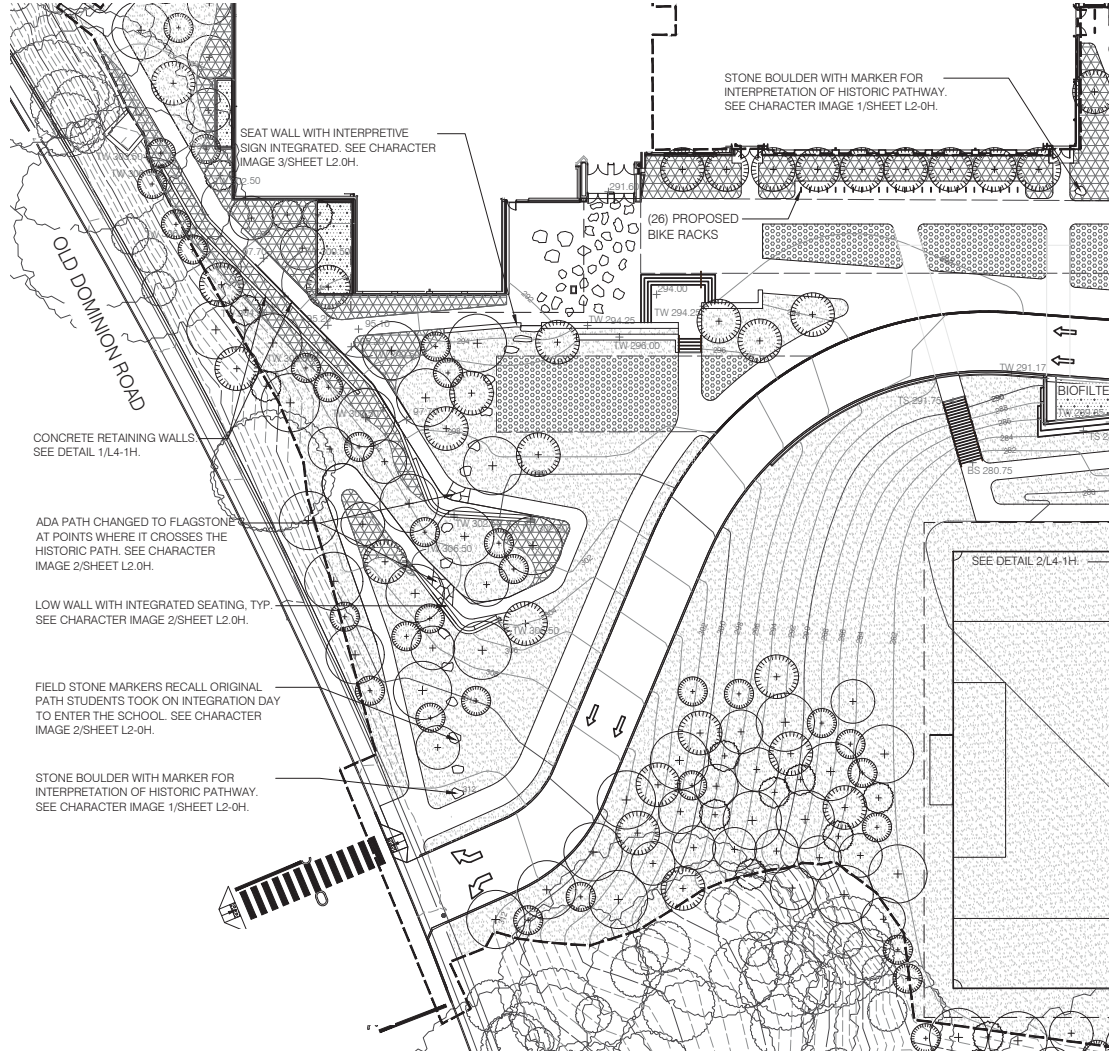
## PEDESTRIAN CIRCULATION

### LEGEND

- LESS THAN 5% (ADA ACCESSIBLE)
- 5.01% - 8.33% W/ HANDRAILS (ADA ACCESSIBLE)
- 5.01% - 8.33% W/O HANDRAILS
- GREATER THAN 8.33%



# HISTORIC PATH



Peirce Mill, Quinn Evans Architects

BUILDING DESIGN | 3



# HISTORIC SIGNIFICANCE

## STRATFORD JUNIOR HIGH



**PERIOD OF SIGNIFICANCE:**  
1950 (original design & construction)  
1959 (integration)

Virginia Landmarks Register (2003)  
National Register of Historic Places (2004)  
Local Historic District Designation (2016)

# EXISTING BUILDING



1995 North Addition  
1995 South Addition  
2005 Music Addition

# SITE AERIAL VIEW



# VIEW FROM OLD DOMINION



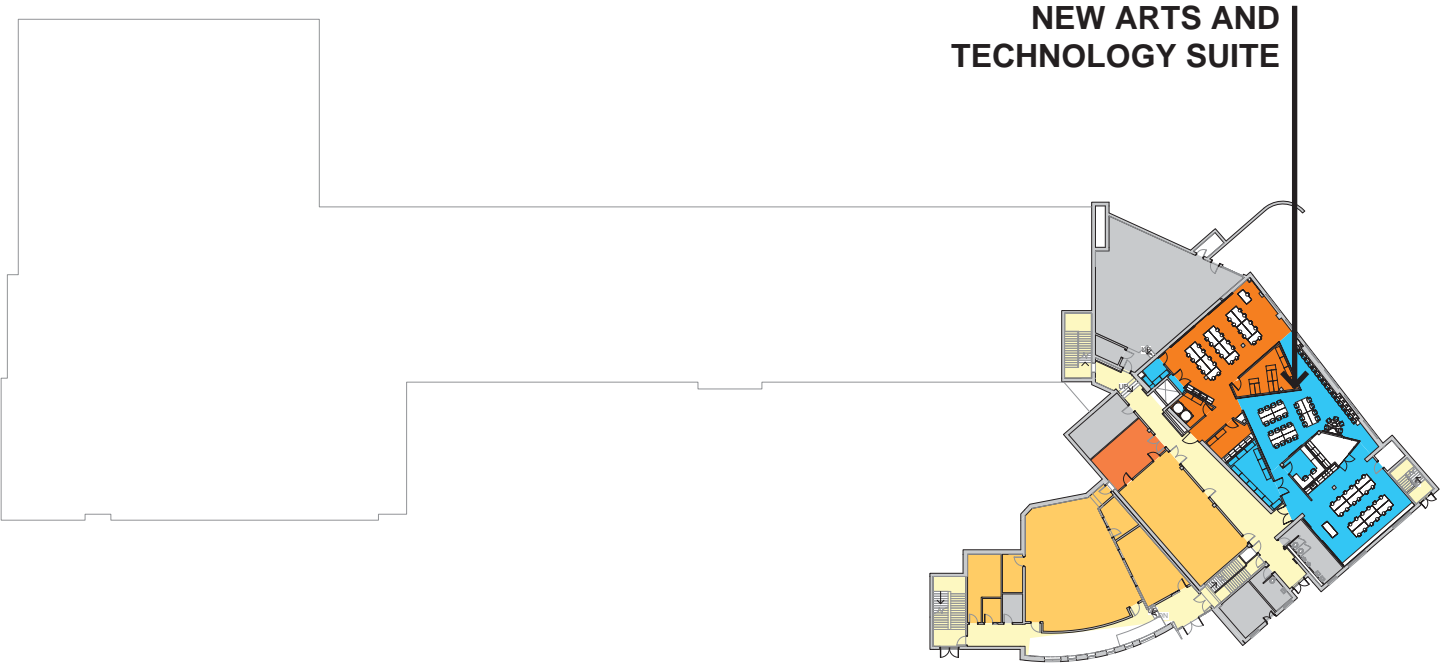
# NEW ADDITION



# NEW ADDITION



# BASEMENT PLAN



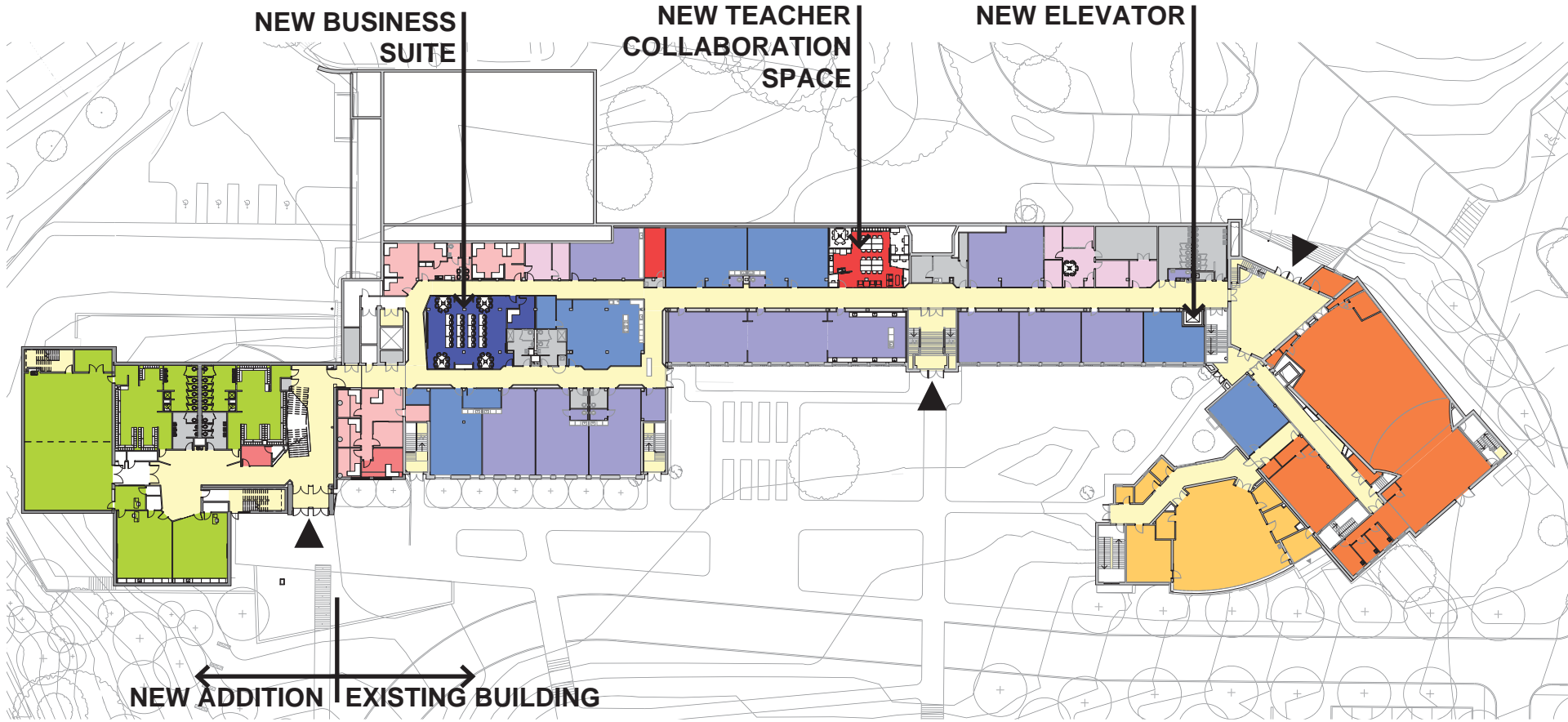
- LIBRARY
- FOOD SERVICE
- PHYSICAL EDUCATION
- THEATER/ARTS
- MUSIC
- TECHNOLOGY
- WORK & FAMILY STUDY
- BUILDING SUPPORT
- TEACHER & STORAGE
- ADMIN
- COUNSELING/CLINIC
- CORE CLASSROOMS
- SPECIAL EDUCATION
- ELECTIVE CLASSROOMS
- CIRCULATION
- ENTRANCE

# ARTS AND TECHNOLOGY





# FIRST FLOOR PLAN



- |   |  |
|---|--|
| <span style="display: inline-block; width: 15px; height: 15px; background-color: purple; border: 1px solid black;"></span> LIBRARY                | <span style="display: inline-block; width: 15px; height: 15px; background-color: red; border: 1px solid black;"></span> TEACHER & STORAGE  |
| <span style="display: inline-block; width: 15px; height: 15px; background-color: brown; border: 1px solid black;"></span> FOOD SERVICE            | <span style="display: inline-block; width: 15px; height: 15px; background-color: pink; border: 1px solid black;"></span> ADMIN   |
| <span style="display: inline-block; width: 15px; height: 15px; background-color: green; border: 1px solid black;"></span> PHYSICAL EDUCATION      | <span style="display: inline-block; width: 15px; height: 15px; background-color: lightpink; border: 1px solid black;"></span> COUNSELING/CLINIC                                      |
| <span style="display: inline-block; width: 15px; height: 15px; background-color: orange; border: 1px solid black;"></span> THEATER/ARTS           | <span style="display: inline-block; width: 15px; height: 15px; background-color: purple; border: 1px solid black;"></span> CORE CLASSROOMS   |
| <span style="display: inline-block; width: 15px; height: 15px; background-color: yellow; border: 1px solid black;"></span> MUSIC                  | <span style="display: inline-block; width: 15px; height: 15px; background-color: blue; border: 1px solid black;"></span> SPECIAL EDUCATION   |
| <span style="display: inline-block; width: 15px; height: 15px; background-color: cyan; border: 1px solid black;"></span> TECHNOLOGY               | <span style="display: inline-block; width: 15px; height: 15px; background-color: darkblue; border: 1px solid black;"></span> ELECTIVE CLASSROOMS                                     |
| <span style="display: inline-block; width: 15px; height: 15px; background-color: lightblue; border: 1px solid black;"></span> WORK & FAMILY STUDY | <span style="display: inline-block; width: 15px; height: 15px; background-color: yellow; border: 1px solid black;"></span> CIRCULATION   |
| <span style="display: inline-block; width: 15px; height: 15px; background-color: gray; border: 1px solid black;"></span> BUILDING SUPPORT         | <span style="display: inline-block; width: 0; height: 0; border-left: 5px solid transparent; border-right: 5px solid transparent; border-bottom: 10px solid black;"></span> ENTRANCE |



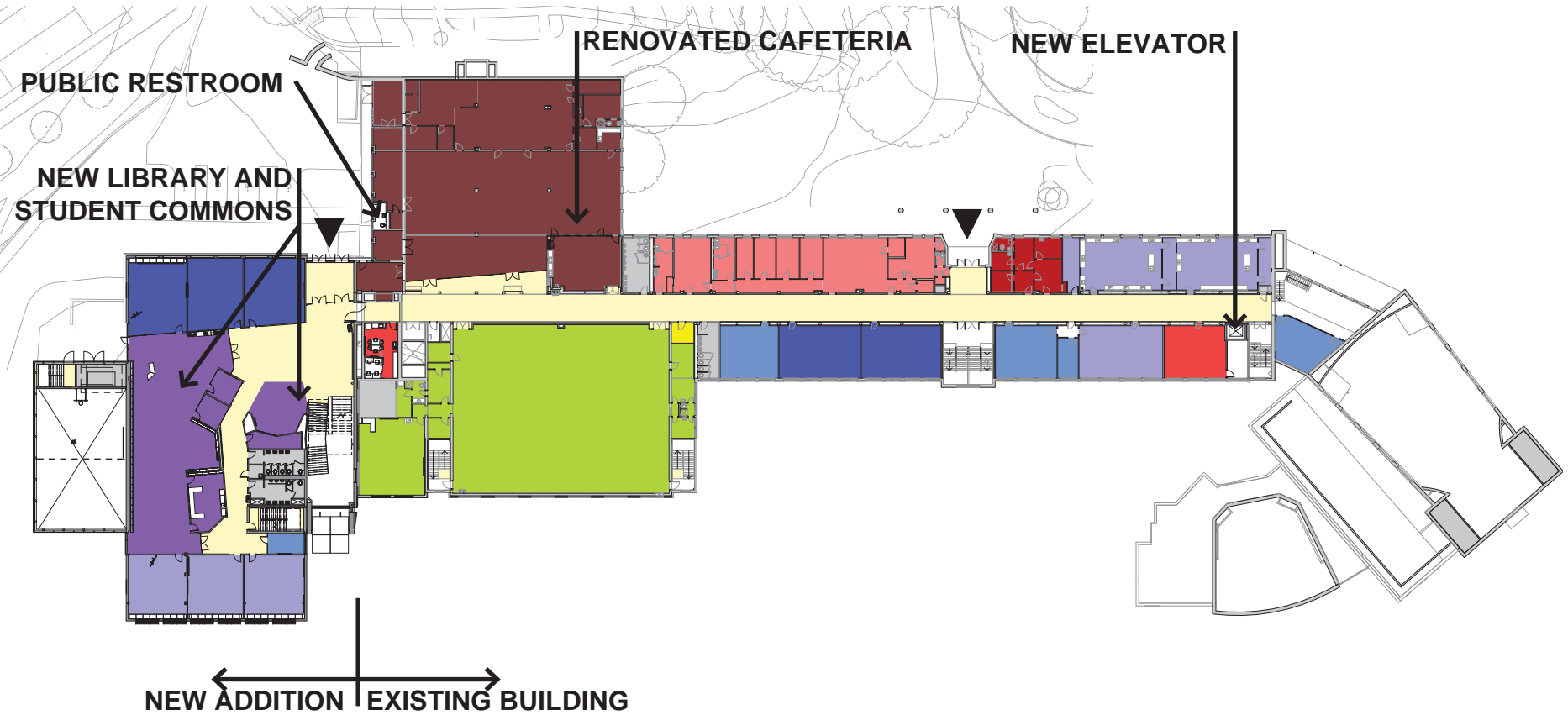
20' 0' 40'



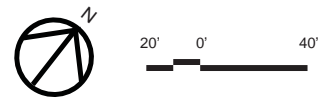
QUINN EVANS ARCHITECTS

Arlington Public Schools  
Stratford Middle School - 25

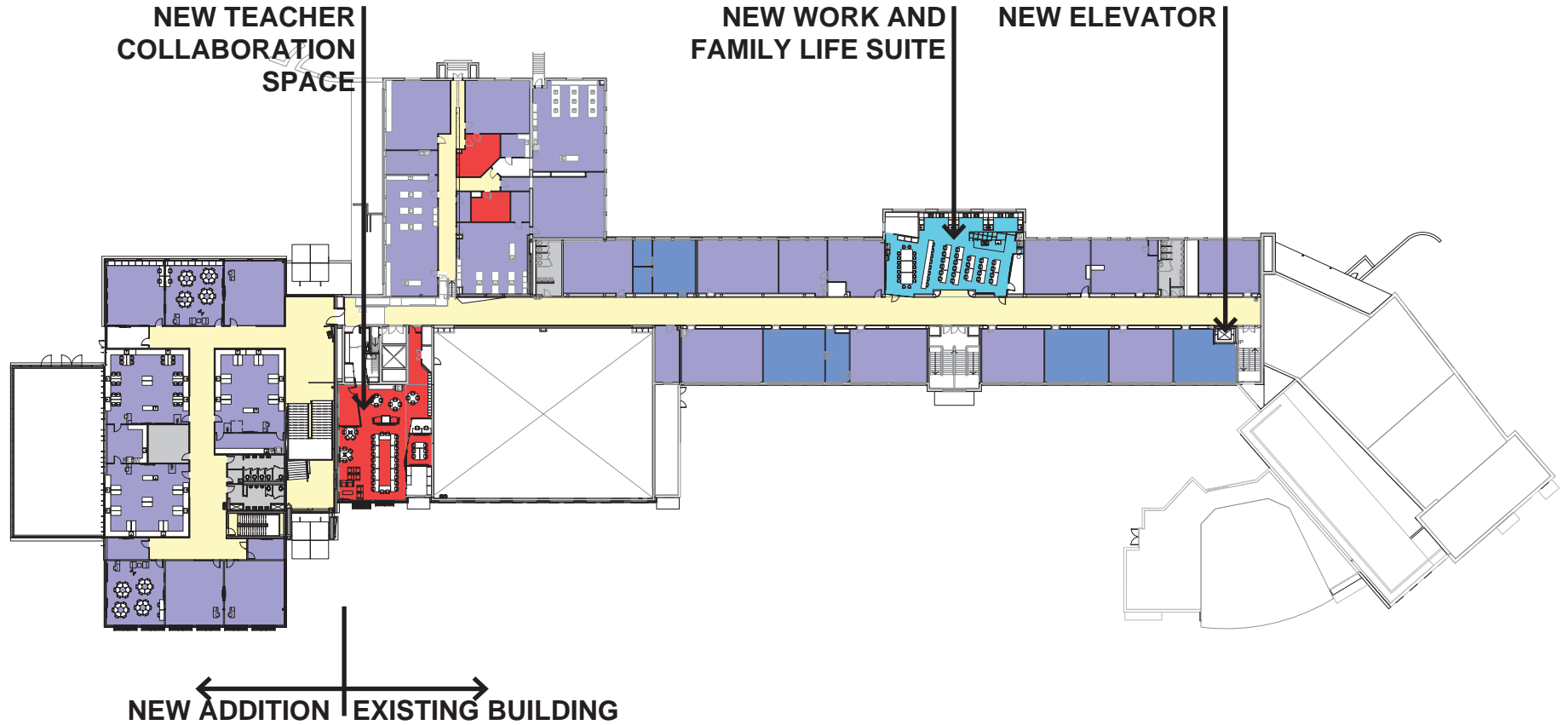
# SECOND FLOOR PLAN



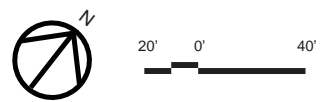
- |   |  |
|---|--|
| <span style="display: inline-block; width: 15px; height: 15px; background-color: purple; border: 1px solid black;"></span> LIBRARY                | <span style="display: inline-block; width: 15px; height: 15px; background-color: red; border: 1px solid black;"></span> TEACHER & STORAGE  |
| <span style="display: inline-block; width: 15px; height: 15px; background-color: darkred; border: 1px solid black;"></span> FOOD SERVICE          | <span style="display: inline-block; width: 15px; height: 15px; background-color: lightcoral; border: 1px solid black;"></span> ADMIN   |
| <span style="display: inline-block; width: 15px; height: 15px; background-color: limegreen; border: 1px solid black;"></span> PHYSICAL EDUCATION  | <span style="display: inline-block; width: 15px; height: 15px; background-color: pink; border: 1px solid black;"></span> COUNSELING/CLINIC   |
| <span style="display: inline-block; width: 15px; height: 15px; background-color: orange; border: 1px solid black;"></span> THEATER/ARTS           | <span style="display: inline-block; width: 15px; height: 15px; background-color: lightblue; border: 1px solid black;"></span> CORE CLASSROOMS  |
| <span style="display: inline-block; width: 15px; height: 15px; background-color: yellow; border: 1px solid black;"></span> MUSIC                  | <span style="display: inline-block; width: 15px; height: 15px; background-color: blue; border: 1px solid black;"></span> SPECIAL EDUCATION   |
| <span style="display: inline-block; width: 15px; height: 15px; background-color: cyan; border: 1px solid black;"></span> TECHNOLOGY               | <span style="display: inline-block; width: 15px; height: 15px; background-color: darkblue; border: 1px solid black;"></span> ELECTIVE CLASSROOMS                                     |
| <span style="display: inline-block; width: 15px; height: 15px; background-color: lightblue; border: 1px solid black;"></span> WORK & FAMILY STUDY | <span style="display: inline-block; width: 15px; height: 15px; background-color: yellow; border: 1px solid black;"></span> CIRCULATION   |
| <span style="display: inline-block; width: 15px; height: 15px; background-color: gray; border: 1px solid black;"></span> BUILDING SUPPORT         | <span style="display: inline-block; width: 0; height: 0; border-left: 5px solid transparent; border-right: 5px solid transparent; border-bottom: 10px solid black;"></span> ENTRANCE |



# THIRD FLOOR PLAN



- |  |  |
|--|--|
| <ul style="list-style-type: none"> <li><span style="display: inline-block; width: 15px; height: 15px; background-color: purple; margin-right: 5px;"></span> LIBRARY</li> <li><span style="display: inline-block; width: 15px; height: 15px; background-color: brown; margin-right: 5px;"></span> FOOD SERVICE</li> <li><span style="display: inline-block; width: 15px; height: 15px; background-color: green; margin-right: 5px;"></span> PHYSICAL EDUCATION</li> <li><span style="display: inline-block; width: 15px; height: 15px; background-color: orange; margin-right: 5px;"></span> THEATER/ARTS</li> <li><span style="display: inline-block; width: 15px; height: 15px; background-color: yellow; margin-right: 5px;"></span> MUSIC</li> <li><span style="display: inline-block; width: 15px; height: 15px; background-color: cyan; margin-right: 5px;"></span> TECHNOLOGY</li> <li><span style="display: inline-block; width: 15px; height: 15px; background-color: lightblue; margin-right: 5px;"></span> WORK &amp; FAMILY STUDY</li> <li><span style="display: inline-block; width: 15px; height: 15px; background-color: grey; margin-right: 5px;"></span> BUILDING SUPPORT</li> </ul> | <ul style="list-style-type: none"> <li><span style="display: inline-block; width: 15px; height: 15px; background-color: red; margin-right: 5px;"></span> TEACHER &amp; STORAGE</li> <li><span style="display: inline-block; width: 15px; height: 15px; background-color: pink; margin-right: 5px;"></span> ADMIN</li> <li><span style="display: inline-block; width: 15px; height: 15px; background-color: lightpink; margin-right: 5px;"></span> COUNSELING/CLINIC</li> <li><span style="display: inline-block; width: 15px; height: 15px; background-color: lightpurple; margin-right: 5px;"></span> CORE CLASSROOMS</li> <li><span style="display: inline-block; width: 15px; height: 15px; background-color: darkpurple; margin-right: 5px;"></span> SPECIAL EDUCATION</li> <li><span style="display: inline-block; width: 15px; height: 15px; background-color: darkblue; margin-right: 5px;"></span> ELECTIVE CLASSROOMS</li> <li><span style="display: inline-block; width: 15px; height: 15px; background-color: yellow; margin-right: 5px;"></span> CIRCULATION</li> <li><span style="display: inline-block; width: 0; height: 0; border-left: 5px solid transparent; border-right: 5px solid transparent; border-bottom: 10px solid black; margin-right: 5px;"></span> ENTRANCE</li> </ul> |
|--|--|



# HEART OF SCHOOL



# PROJECT SCHEDULE | 4

# PROJECT SCHEDULE

	2016	2017	2018	2019
USE PERMIT		3/2017		
CERT. OF APPROP.		3/2017		
DESIGN DEV.				
CONST. DOCS.				
HISTORIC COMMIT.				
BUILDING PERMIT			Fall 2017	
CONSTRUCTION				
SCHOOL OPEN				

EARLY PHASE → SUMMER BLITZ → STEADY WORK → SUMMER BLITZ

THANK YOU

