

STRATFORD MIDDLE SCHOOL RENOVATION AND ADDITION

ARLINGTON PUBLIC SCHOOLS

PLANNING COMMISSION
06 MARCH 2017



QUINN EVANS
ARCHITECTS

OVERVIEW | 1

ARLINGTON PUBLIC SCHOOLS

2015-16 ACADEMIC HIGHLIGHTS



A YEAR OF PROGRESS ACHIEVEMENT & EXCELLENCE

APS Graduates were awarded

\$32M
IN SCHOLARSHIPS



1,351

GRADUATES IN THE CLASS OF 2016

97%
GRADUATION RATE

for students in the three comprehensive high schools for all of their APS high school career



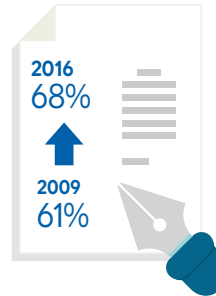
79% COMPLETED ONE OR MORE college level courses



- ✓ Advanced Placement
- ✓ Dual-Enrollment Course
- ✓ International Baccalaureate

67.9%
OF APS GRADS

earned an Advanced Studies Diploma* resulting in a 12% increase since 2009



* Advanced Studies Diploma is Virginia's most rigorous diploma & paves the way for admission to a two- or four-year college

APS AMONG TOP SCHOOL SYSTEMS IN THE U.S.

APS ranked in **TOP 3%** in the Nation

APS ranked **#59** in the U.S.

APS ranked in **TOP 6%** in the Nation

APS STUDENTS SURPASS THEIR PEERS

SAT Average Scores

APS	1661
VA	1535
U.S.	1484

ACT Composite Scores

APS	25.4
VA	23.1
U.S.	20.8

IB Pass Rates

APS	97%
VA	72%
WORLD	79%

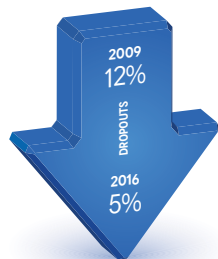
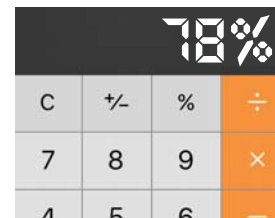
VIRGINIA STANDARDS OF LEARNING (SOL) RESULTS



ALL APS SCHOOLS
are Fully Accredited by VA

MORE THAN 3/4 OF STUDENTS

take Algebra I or Geometry by 8th grade



APS DROPOUT RATE REDUCED BY **52%** since 2009

93% PLAN TO ATTEND* a 2 or 4 year college



OVERVIEW

PROJECT APPROVED BY THE SCHOOL BOARD

- 1,000- seat
Neighborhood Middle
School
- School opening in
September 2019
- 40,000 sf addition
- \$36.55M in funding
available with \$250K
dedicated to historic
commemoration



OVERVIEW

SUCCESS FACTORS

- **Support Strategy Plan Goal #4 - Provide Optimal Learning Environments**
- **Respect neighborhood context**
- **Improve accessibility and circulation for regular users and emergency services**
- **Safe and functional support for all modes of transportation**
- **Sensitivity to cultural and architectural historic significance**
- **Cohesion with adjacent Stratford Park**
- **Minimize impacts on open space and environmental services**

STAKEHOLDER INVOLVEMENT

- 23 BLPC meetings
- 13 PFRC meetings
- 7 HALRB/DRC meetings/work sessions
- 2 Gallery Walks / Open Houses
- Additional meetings with:
 - Community leaders
 - Department of Parks and Recreation
 - VDOT
 - Arlington County
 - School Board Members



SITE DESIGN | 2

EXISTING SITE

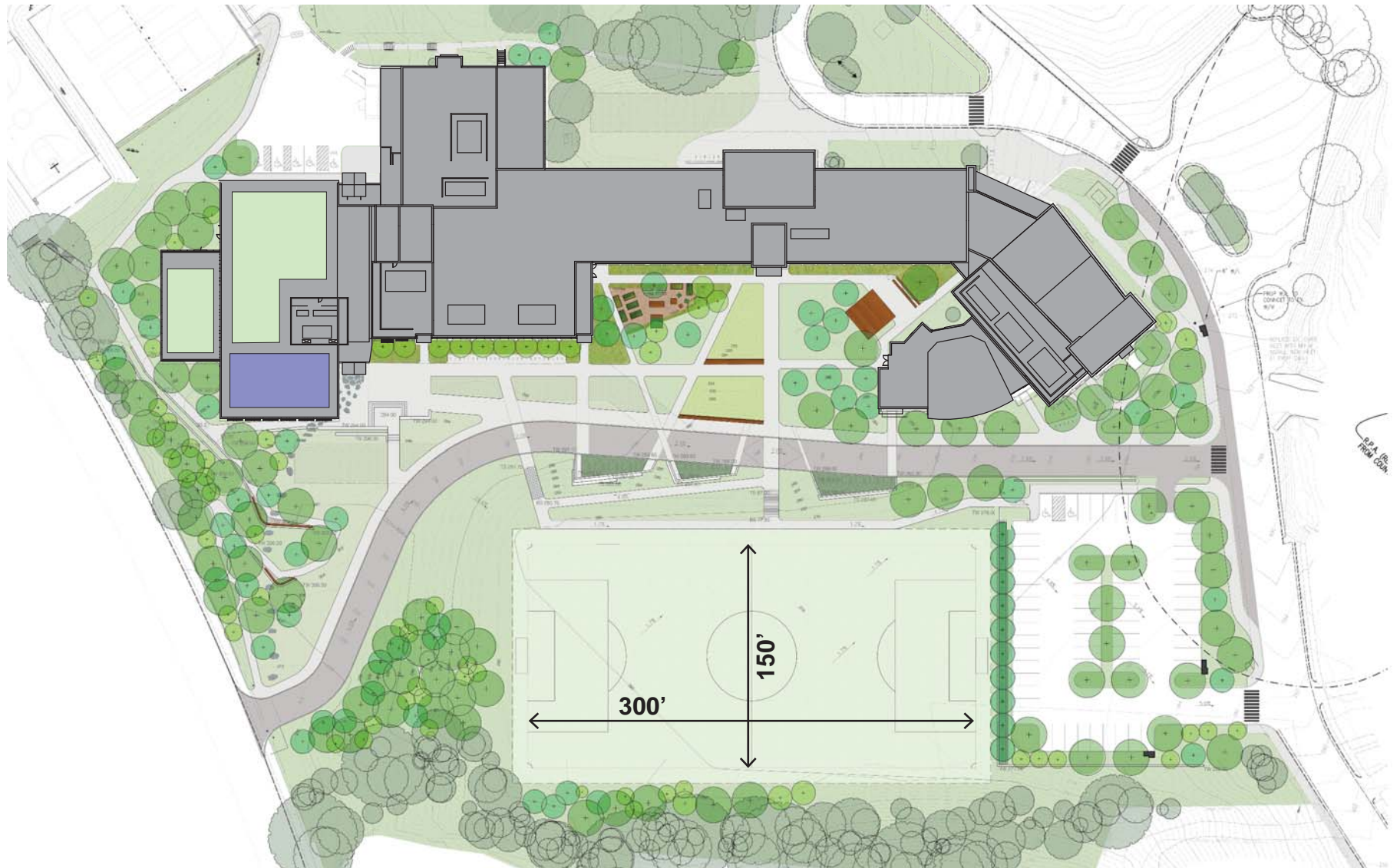
- Existing Historic School Building
- Bus Loop and Entrance
- Multipurpose Field
- Parking
- DPR Stratford Park property



SITE IMPROVEMENTS

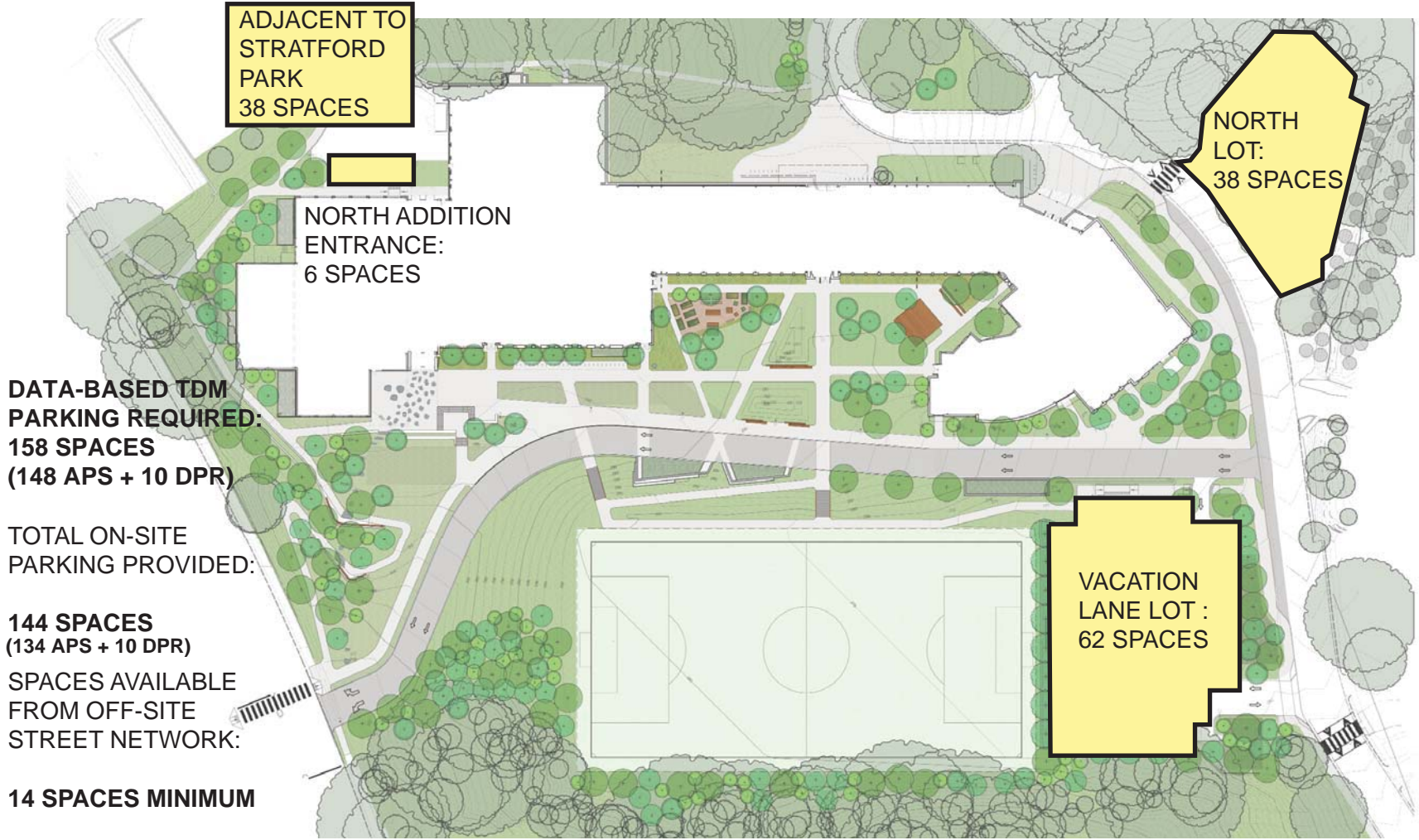


SITE PLAN



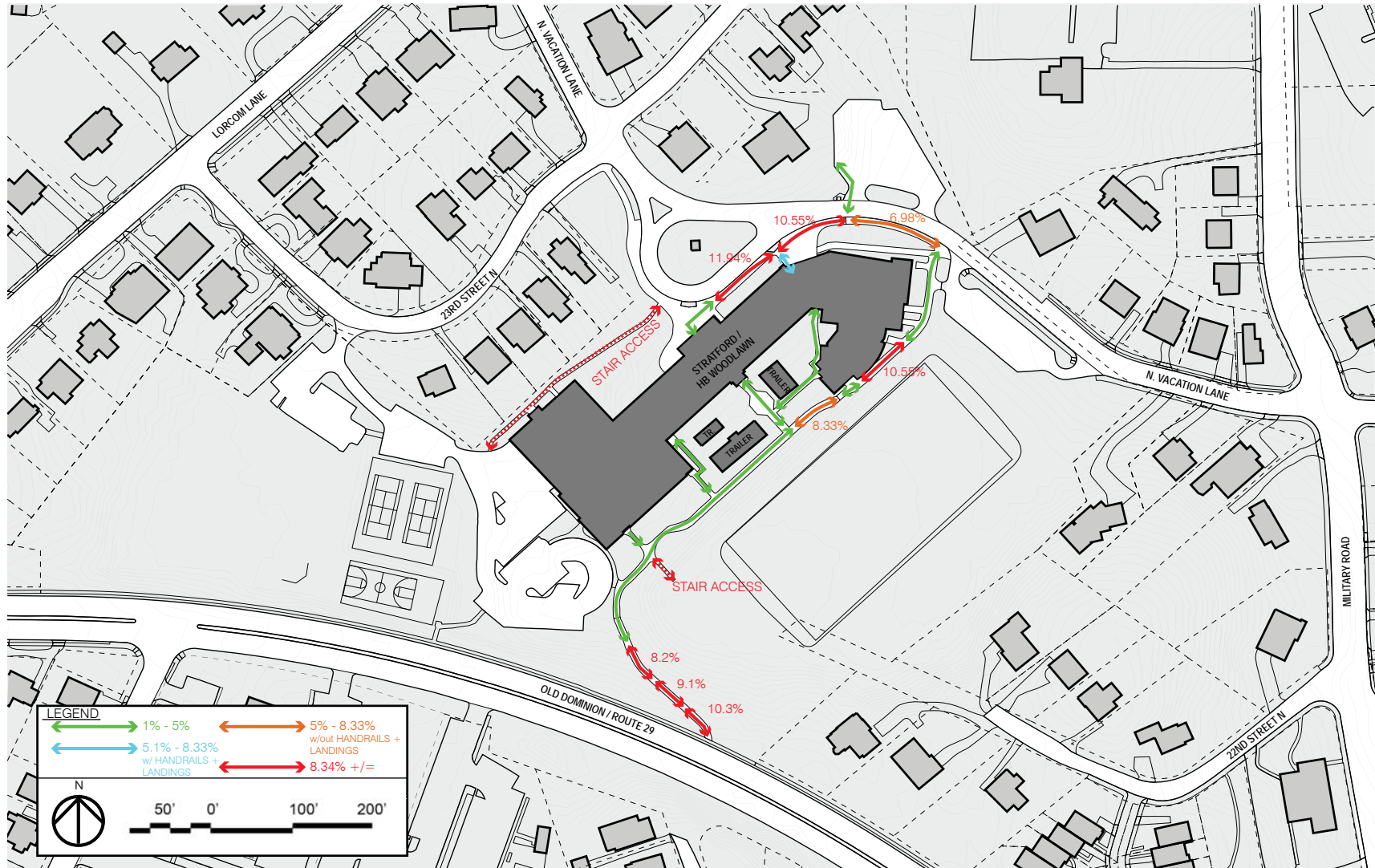
SITE PLAN

PARKING



EXISTING SITE PEDESTRIAN NETWORK

PEDESTRIAN CIRCULATION

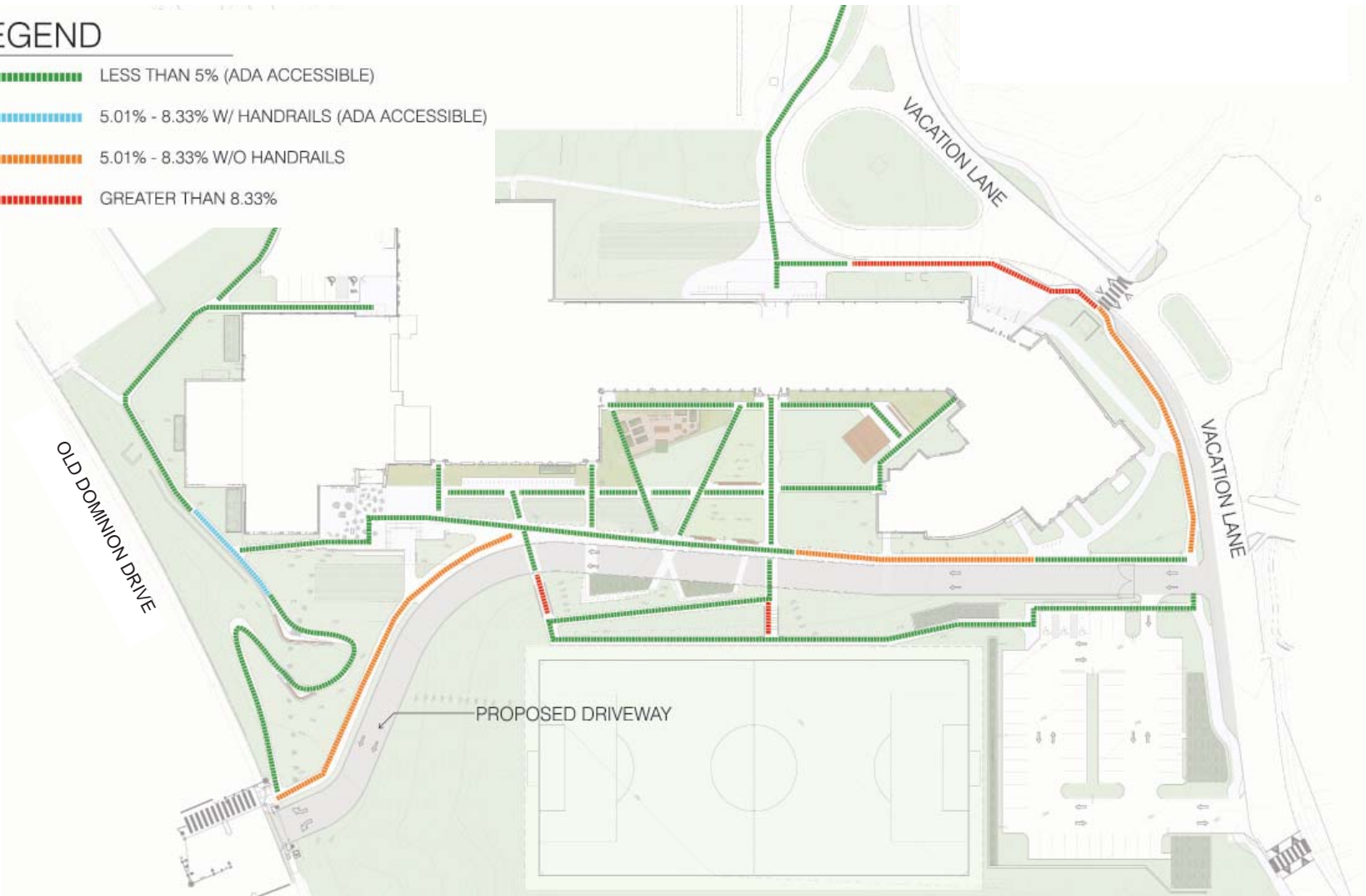


SITE PEDESTRIAN NETWORK

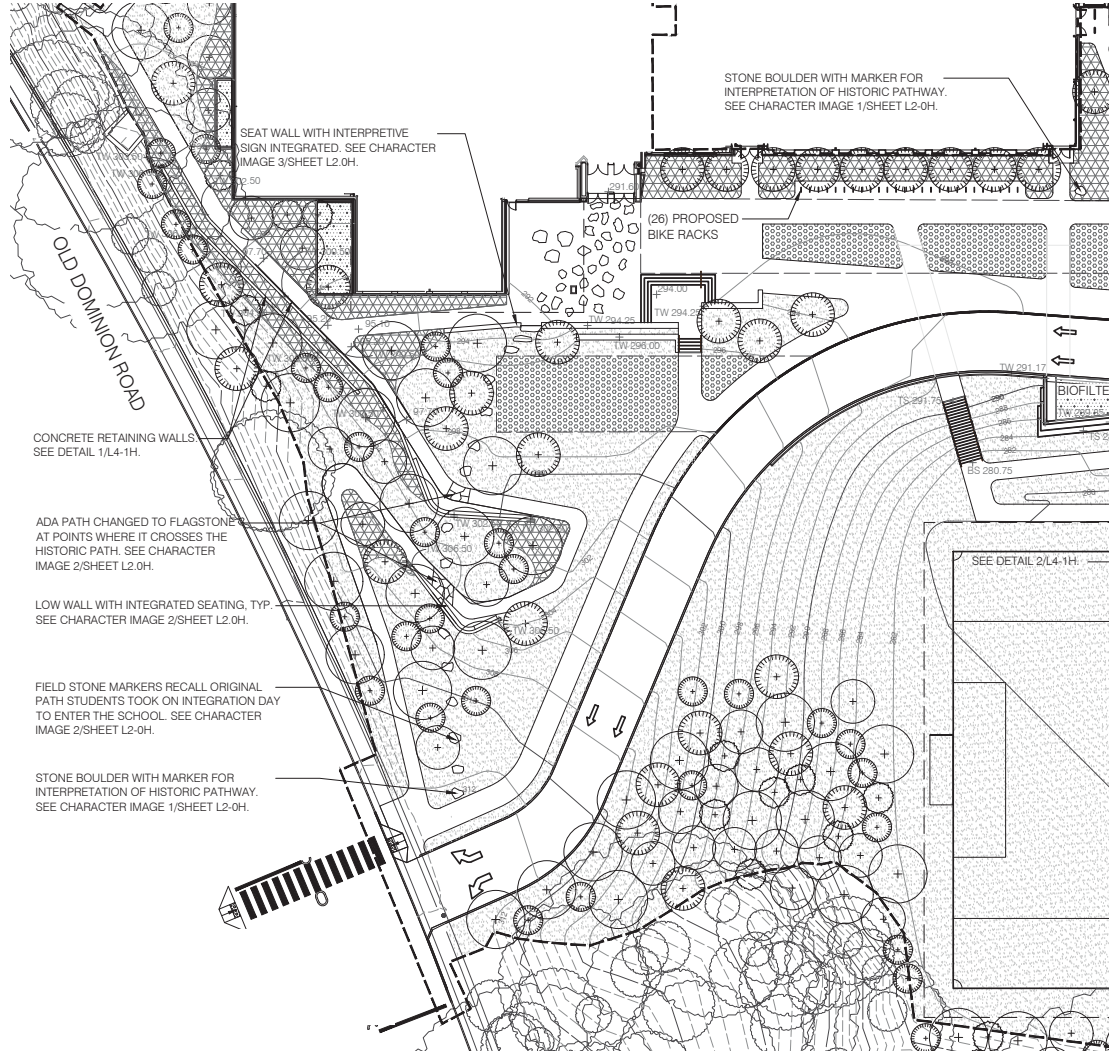
PEDESTRIAN CIRCULATION

LEGEND

- LESS THAN 5% (ADA ACCESSIBLE)
- 5.01% - 8.33% W/ HANDRAILS (ADA ACCESSIBLE)
- 5.01% - 8.33% W/O HANDRAILS
- GREATER THAN 8.33%







HISTORIC PATH






Peirce Mill, Quinn Evans Architects

ARLINGTON BIKE NETWORK

Existing Facilities

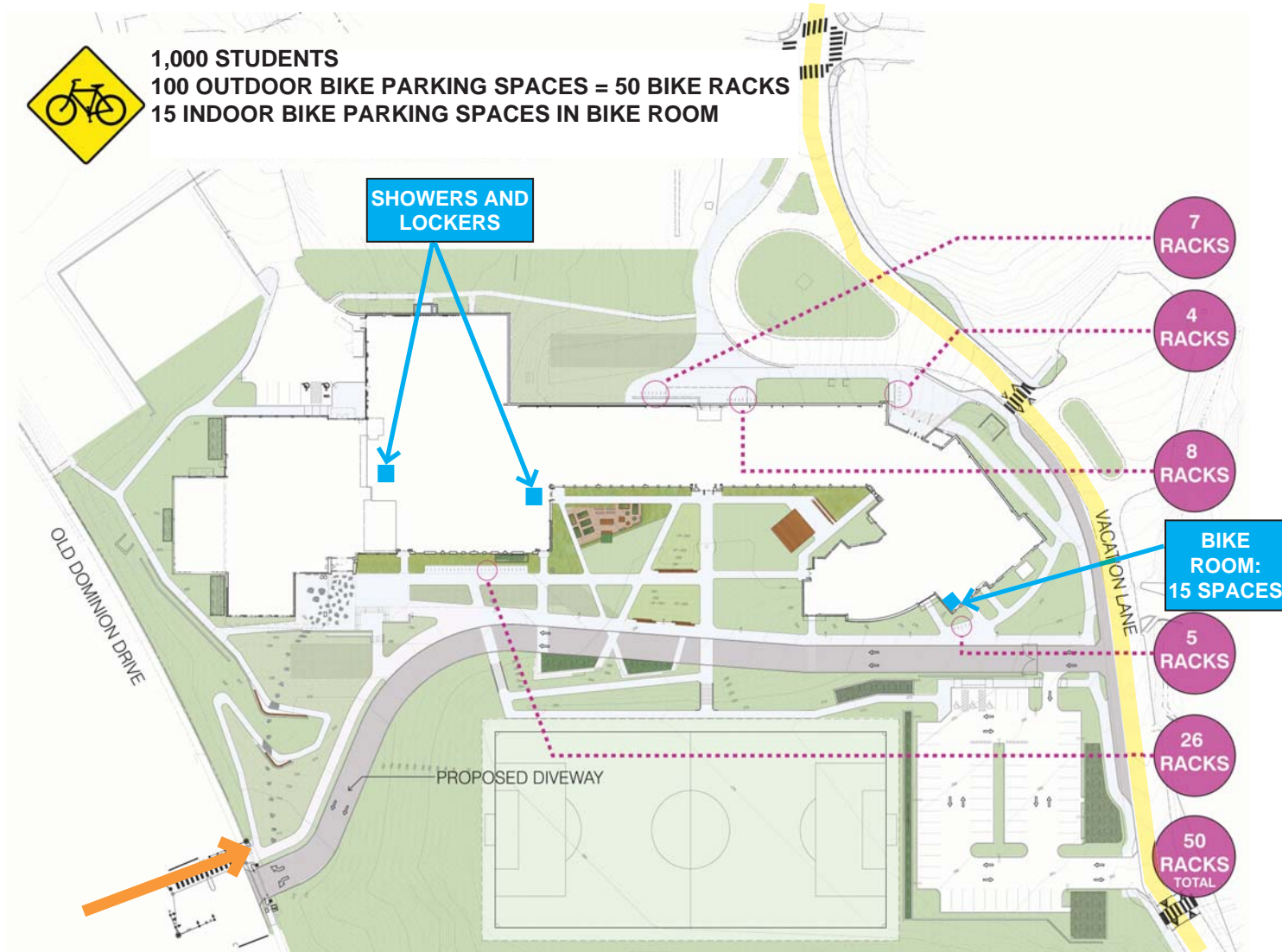
-  Off-Street Trail
-  Bike Lane
-  Bike Lane: One Side
-  Sharrow

 Recommended Crossing Guard Locations

-  Suggested Bike Route
-  Capital Bike Share Stations



BICYCLE ACCESS AND STORAGE



BUILDING DESIGN | 3

EXISTING BUILDING



1995 North Addition
1995 South Addition
2005 Music Addition



SITE AERIAL VIEW



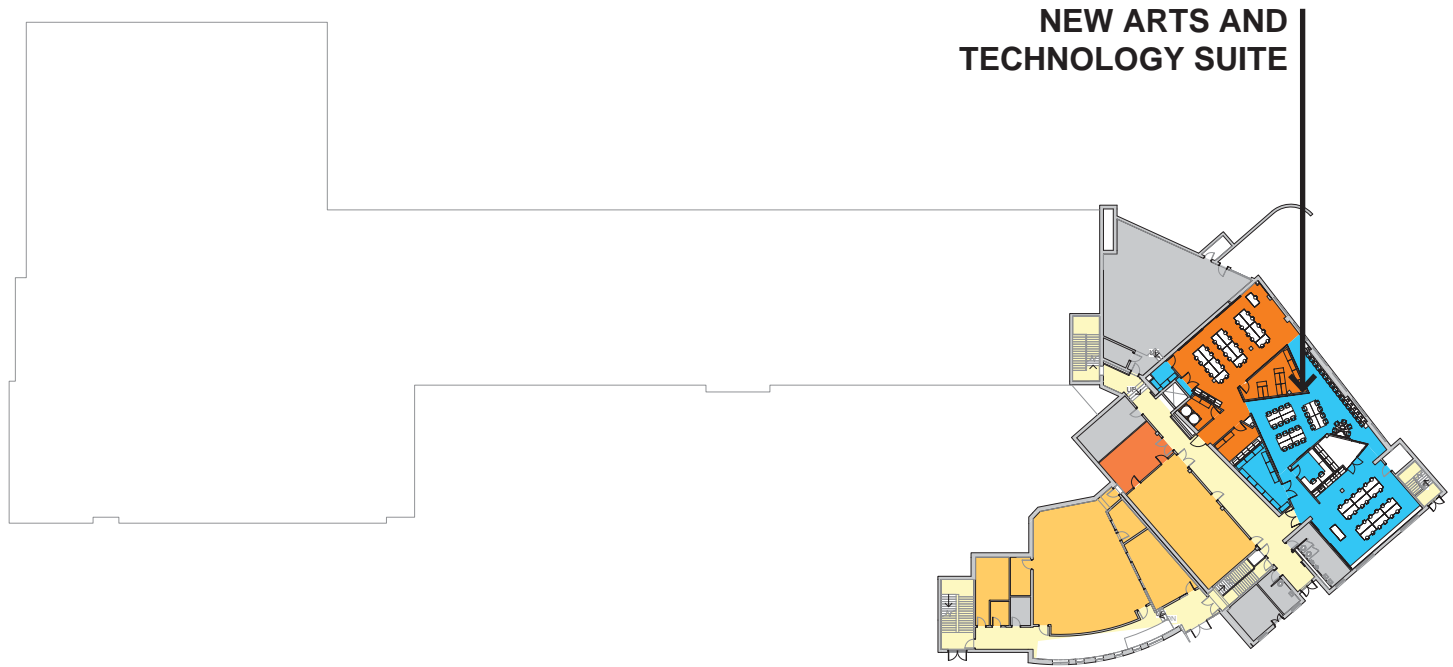
NEW ADDITION



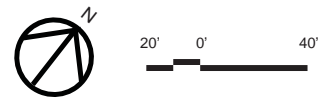
VIEW FROM OLD DOMINION



BASEMENT PLAN



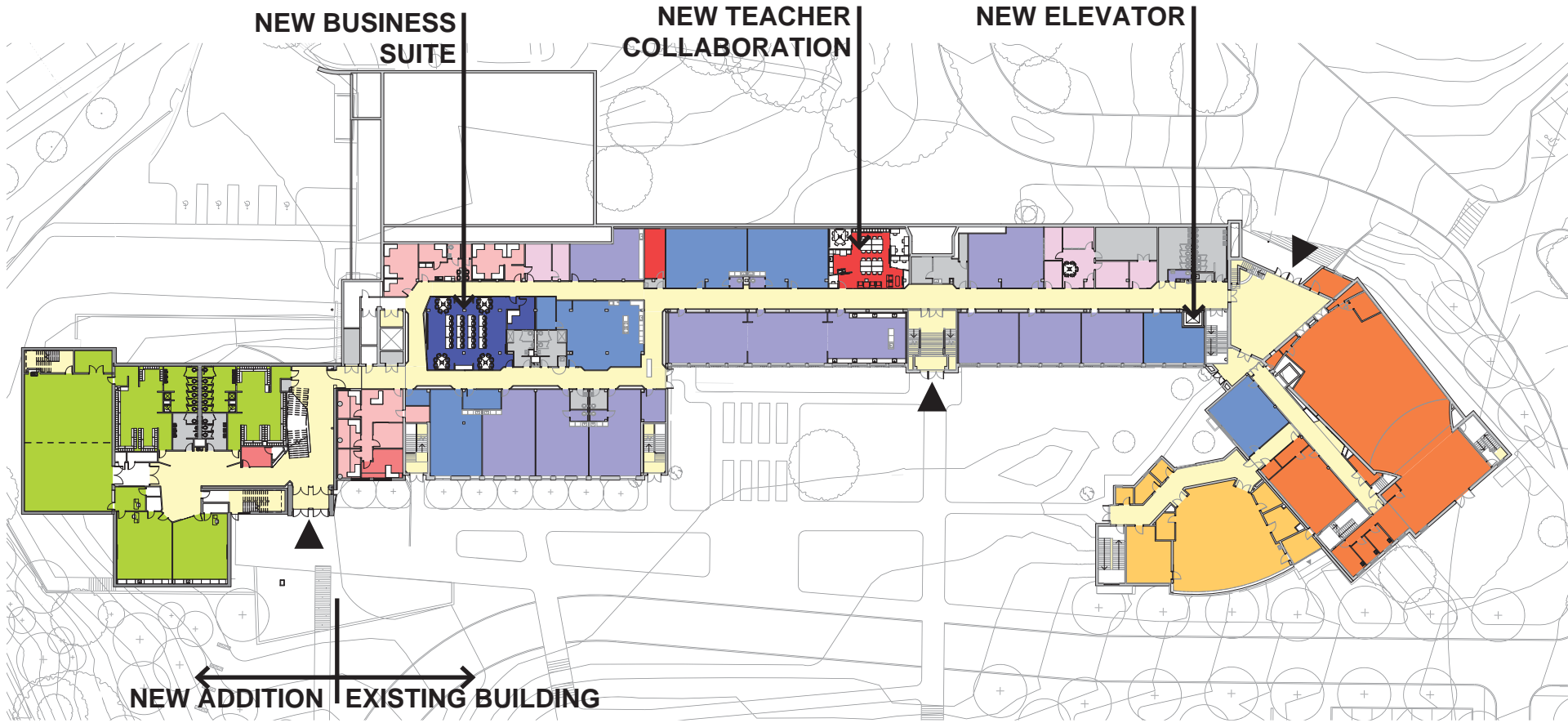
- | | |
|---------------------|---------------------|
| LIBRARY | TEACHER & STORAGE |
| FOOD SERVICE | ADMIN |
| PHYSICAL EDUCATION | COUNSELING/CLINIC |
| THEATER/ARTS | CORE CLASSROOMS |
| MUSIC | SPECIAL EDUCATION |
| TECHNOLOGY | ELECTIVE CLASSROOMS |
| WORK & FAMILY STUDY | CIRCULATION |
| BUILDING SUPPORT | ENTRANCE |



ARTS AND TECHNOLOGY



FIRST FLOOR PLAN



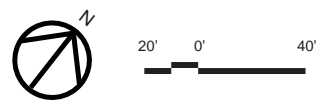
NEW BUSINESS SUITE

NEW TEACHER COLLABORATION

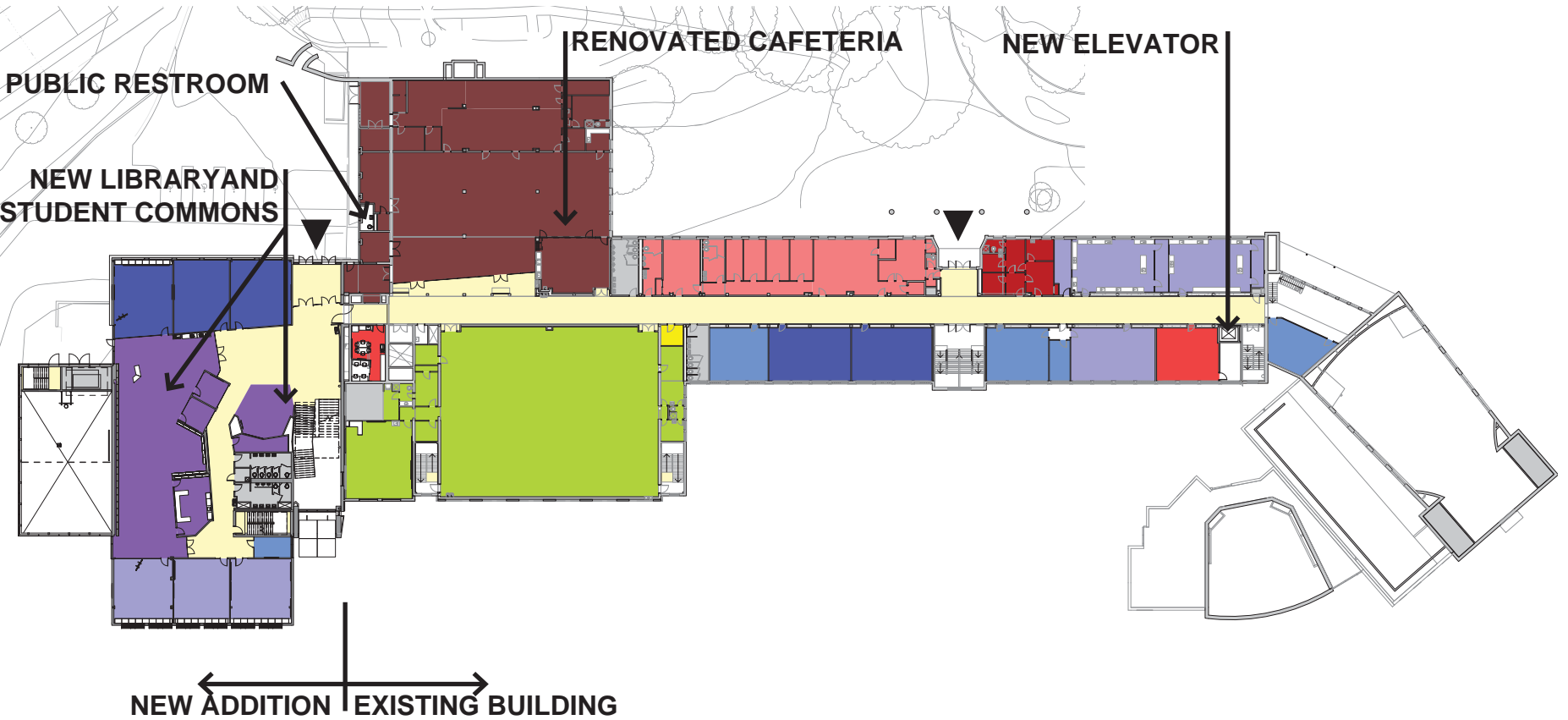
NEW ELEVATOR

NEW ADDITION | **EXISTING BUILDING**

- | | |
|--|---|
| LIBRARY | TEACHER & STORAGE |
| FOOD SERVICE | ADMIN |
| PHYSICAL EDUCATION | COUNSELING/CLINIC |
| THEATER/ARTS | CORE CLASSROOMS |
| MUSIC | SPECIAL EDUCATION |
| TECHNOLOGY | ELECTIVE CLASSROOMS |
| WORK & FAMILY STUDY | CIRCULATION |
| BUILDING SUPPORT | ENTRANCE |

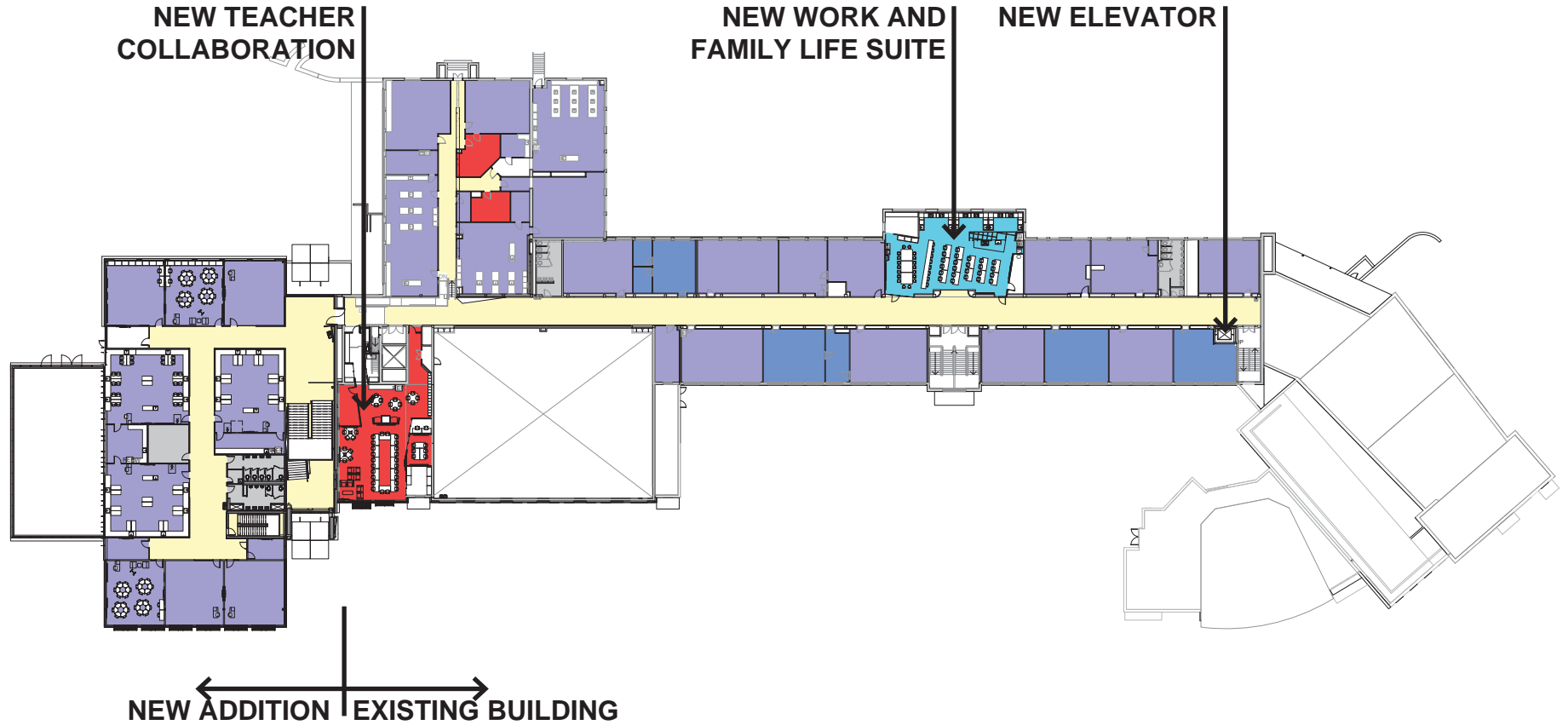


SECOND FLOOR PLAN

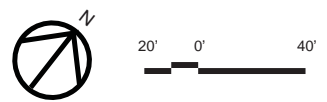


- LIBRARY
- FOOD SERVICE
- PHYSICAL EDUCATION
- THEATER/ARTS
- MUSIC
- TECHNOLOGY
- WORK & FAMILY STUDY
- BUILDING SUPPORT
- TEACHER & STORAGE
- ADMIN
- COUNSELING/CLINIC
- CORE CLASSROOMS
- SPECIAL EDUCATION
- ELECTIVE CLASSROOMS
- CIRCULATION
- ENTRANCE

THIRD FLOOR PLAN



- | | |
|--|--|
| LIBRARY | TEACHER & STORAGE |
| FOOD SERVICE | ADMIN |
| PHYSICAL EDUCATION | COUNSELING/CLINIC |
| THEATER/ARTS | CORE CLASSROOMS |
| MUSIC | SPECIAL EDUCATION |
| TECHNOLOGY | ELECTIVE CLASSROOMS |
| WORK & FAMILY STUDY | CIRCULATION |
| BUILDING SUPPORT | ENTRANCE |



HEART OF SCHOOL



PROJECT SCHEDULE | 4

PROJECT SCHEDULE

	2016	2017	2018	2019
USE PERMIT		3/2017		
CERT. OF APPROP.		3/2017		
DESIGN DEV.				
CONST. DOCS.				
HISTORIC COMMIT.				
BUILDING PERMIT			Fall 2017	
CONSTRUCTION				
SCHOOL OPEN				

EARLY PHASE → SUMMER BLITZ → STEADY WORK → SUMMER BLITZ

THANK YOU

