

# STRATFORD MIDDLE SCHOOL RENOVATION AND ADDITION

ARLINGTON PUBLIC SCHOOLS

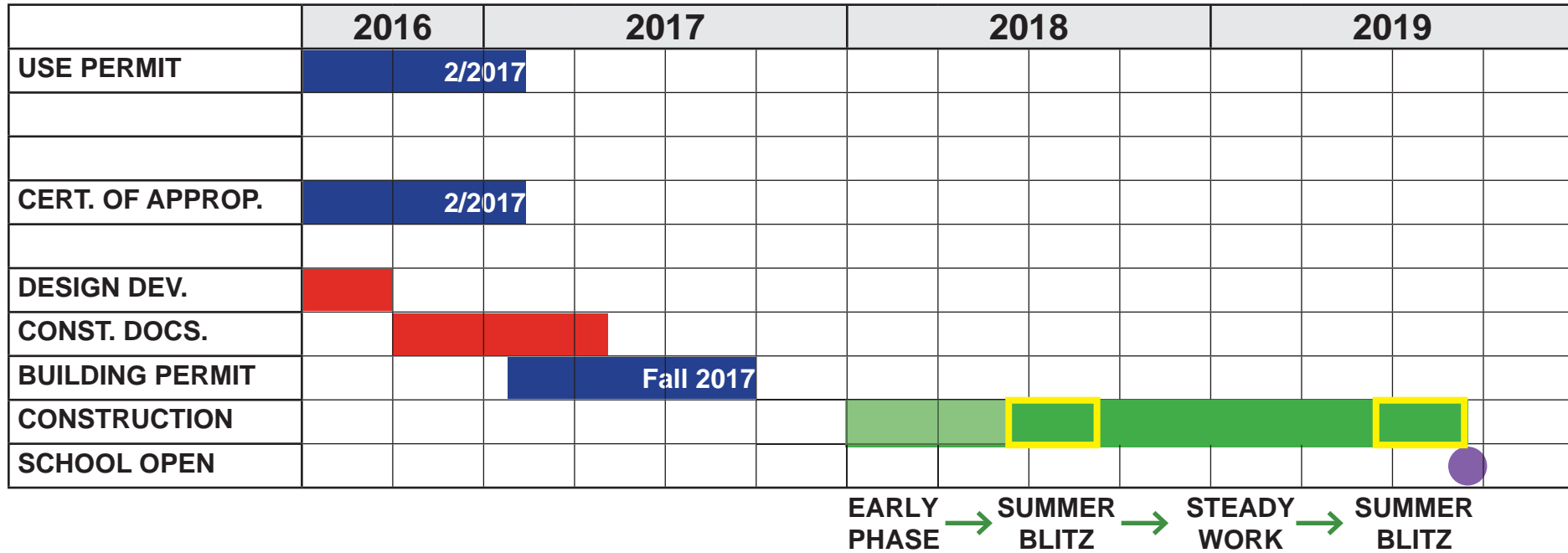
TRANSPORTATION COMMISSION  
02 MARCH 2017



QUINN EVANS  
ARCHITECTS

# PROJECT UPDATE AND SCHEDULE | 1

# PROJECT SCHEDULE



# PROJECT MILESTONES

- **Concept Design approved November 2015**
- **Schematic Design approved June 2016**
- **Use Permit submitted: September 8, 2016**
  - **EA submitted: September 8, 2016**
  - **Water Quality Impact Assessment submitted: September 15, 2016**
  - **Certificate of Appropriateness submitted: September 22, 2016**
- **Presenting to Commissions: (Fall/Winter 2016/2017)**
- **Resubmission of Use Permit / COA: December 21, 2016**
- **County Board (projected): March 18, 2017**
- **Building Permit (projected): Fall 2017**

# STAKEHOLDER INVOLVEMENT

- 23 BLPC meetings
- 13 PFRC meetings
- 7 HALRB/DRC meetings/work sessions
- 2 Gallery Walks / Open Houses
- Additional meetings with:
  - Community leaders
  - Department of Parks and Recreation
  - VDOT
  - Arlington County
  - School Board Members



# TRANSPORTATION UPDATE | 1



## ***APS Stratford Project Transportation Update***

Transportation Commission  
*March 2, 2017*



- Parking
- Driveway
- Ped/Bike Access







# PARKING



# Parking—Spaces Needed Based on Arlington County Zoning

## Q. How many spaces?

<b>Employees</b>	134	1 staff parking space per 7.5 students
<b>Visitors</b>	25	1 visitor parking space per 40 students
<b>Park Users</b>	10	Agreement with County Staff to use DPR feedback
<b>TOTAL</b>	<b>169</b>	

## Q. Where are the spaces located?

<b>Off-Site</b>	0
<b>On-Site</b>	169

# Parking—Spaces Needed based on Existing Drive Rates and TDM



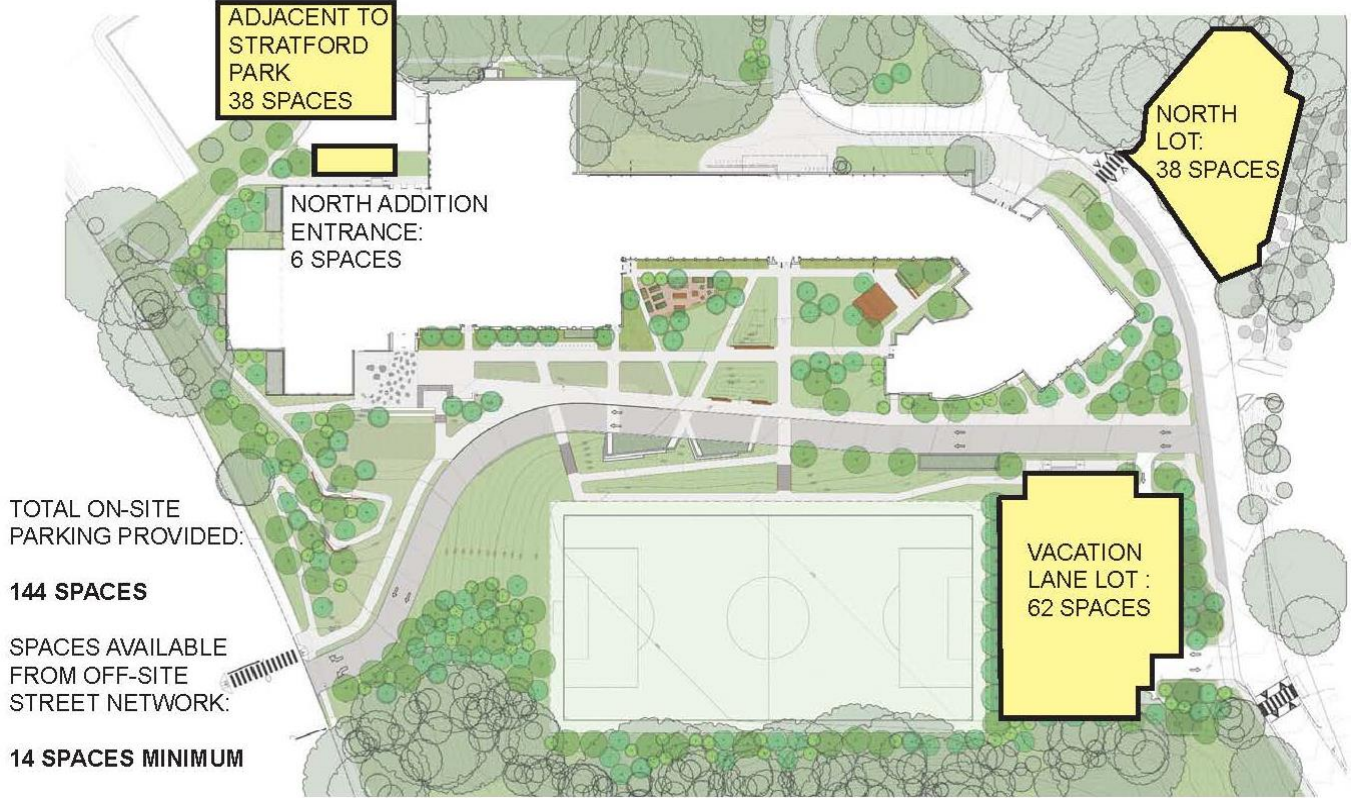
## Q. How many spaces?

<b>Employees</b>	<b>134</b>	Total estimated employees = 153 (124 F/T + 29 P/T based on existing MS staffing levels) Average MS staff drive rate from 2013 survey = 92% (141) Additional 5% reduction for TDM = 134
<b>Visitors</b>	<b>14</b>	Based on maximum number of visitors recorded at Swanson MS at any hour during 2015 APS Neighborhood MS Visitor Survey. Swanson provided most reliable data set of the survey
<b>Park Users</b>	<b>10</b>	Based on feedback from DPR
<b>TOTAL</b>	<b>158</b>	

## Q. Where are the spaces located?

<b>Off-Site</b>	<b>14</b>
<b>On-Site</b>	<b>144</b>

# Parking Locations

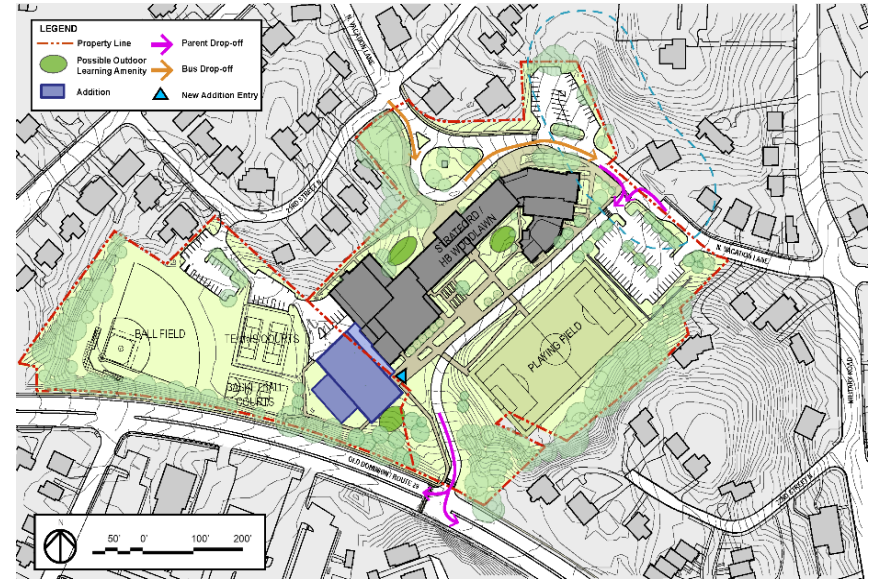




# DRIVEWAY



- Site plan (driveway option) accepted by APS; County Board indicated support
- TIS report accepted by VDOT and County Staff
- Initial driveway and signal design submitted to County for use permit



Site Plan



# Driveway—History

- Several site plan options were considered during an extensive public review process.
- Community concerns:
  - Traffic on neighborhood streets (Vacation Lane and 23<sup>rd</sup>)
  - Traffic at key intersections (Five Points, Old Dominion/Lorcom)
  - Pedestrian and bicycle safety
- TDG concluded that both site plan and alternate site plan were viable from a transportation perspective.
- County Board indicated support for the driveway at a May 2016 work session.



Site Plan

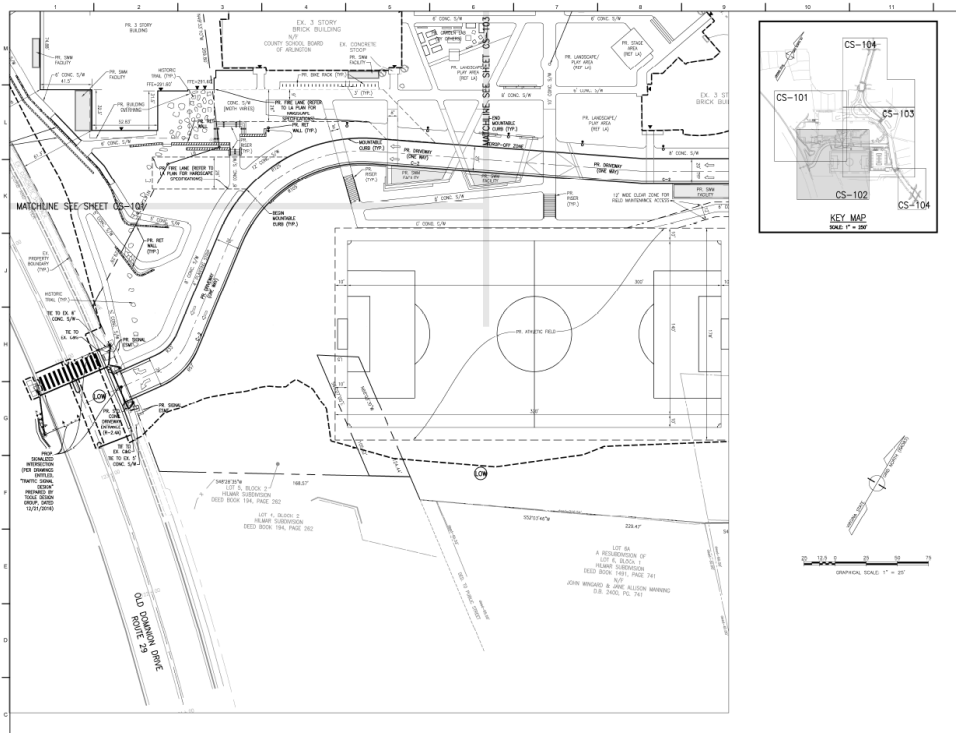


Alternate Site Plan



# Driveway—Future Steps

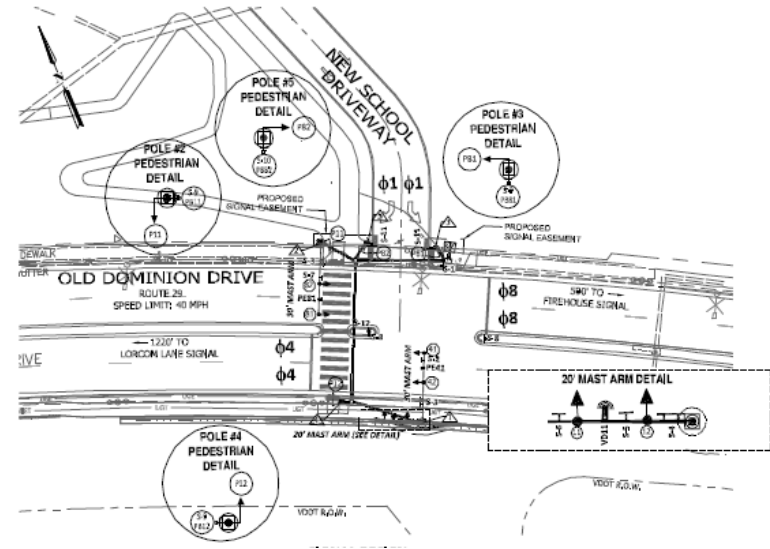
- Will continue to refine driveway and signal design based on feedback from County and VDOT
- Final signal design must be approved by County and VDOT







- Two new traffic poles
  - North side of Old Dominion Drive, west of new driveway
    - Single mast arm
  - South side of Old Dominion Drive, across from new driveway
    - Dual mast arms
    - May require some adjustment of retaining wall design
- Four new pedestrian push buttons
  - Recommend high-visibility crosswalks





# **PED/BIKE ACCESS**

# Ped/Bike Access—Principles



- Routes are safe, comfortable, convenient, and accessible.
- Sidewalks are wide enough to accommodate expected pedestrian flows.
- Pathways and crossings are well-lit.
- Design indicates pedestrians priority at driveways and crossings.
- Secure, convenient bicycle parking.





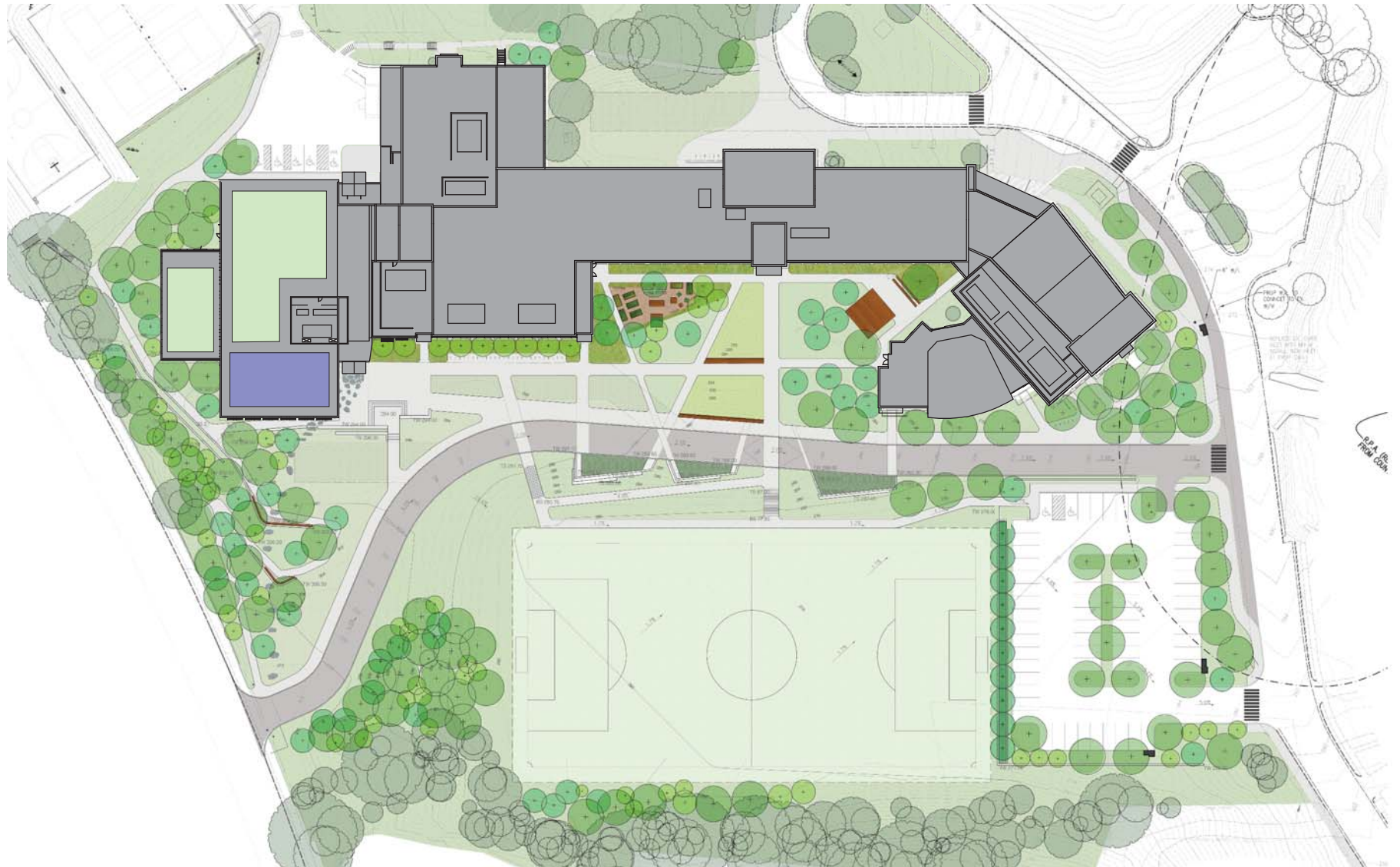
- Signalized crossing on Old Dominion
- Crossing improvements at Vacation Lane/Lorcom and Vacation Lane/Military
- New sidewalk and traffic calming on Vacation Lane
- Parking restrictions at arrival/dismissal times to enable two-way travel on Vacation Lane
- On-campus pathways that accommodate expected pedestrian volumes and desire lines
- Class I (15 spaces), Class II (10 spaces), and Class III (90 spaces) bicycle parking
- Shower and locker facilities for staff

# Questions?



DESIGN UPDATE | 2

# SITE PLAN



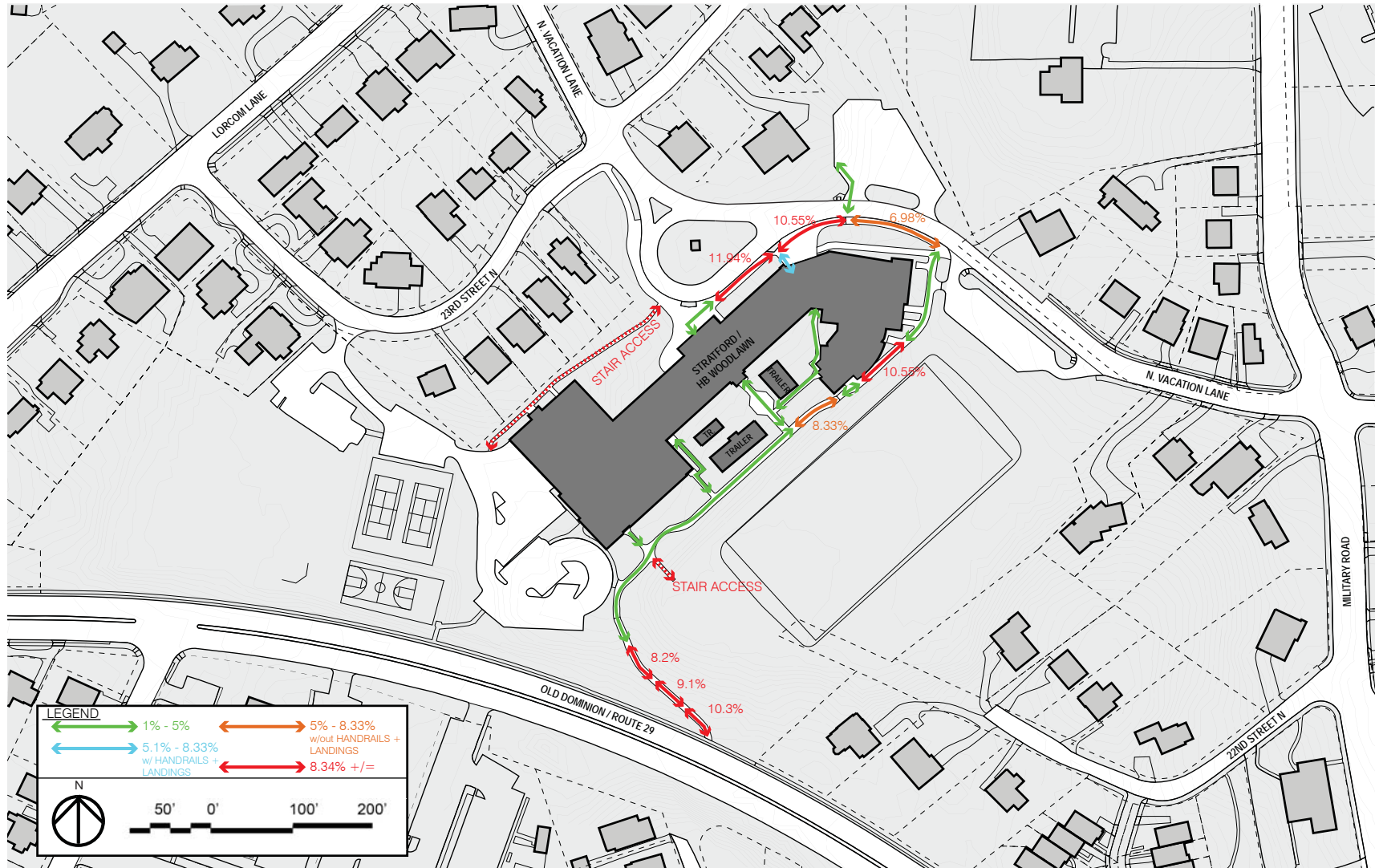
# NEW ADDITION





# EXISTING SITE PEDESTRIAN NETWORK

## PEDESTRIAN CIRCULATION

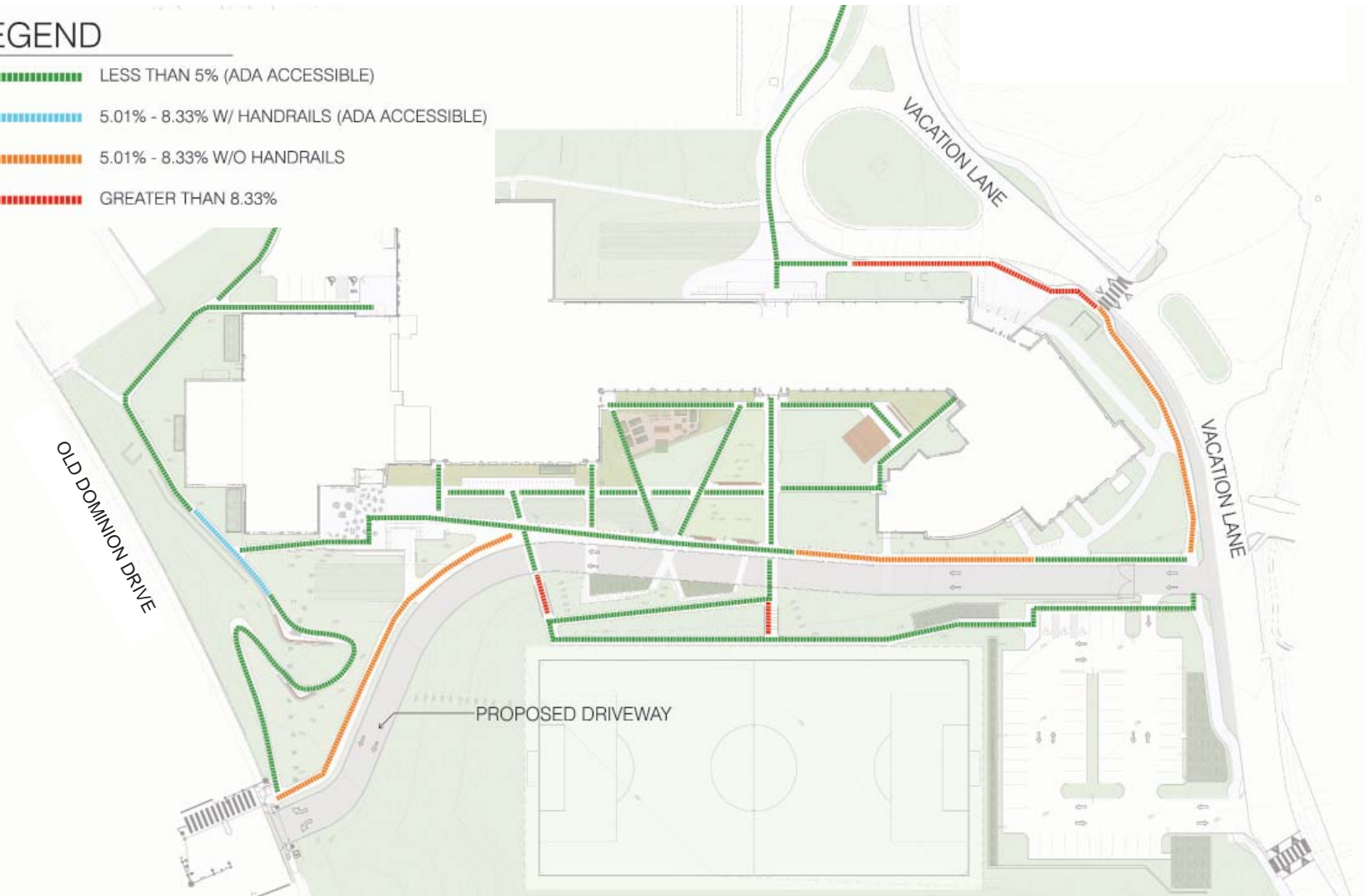


# SITE PEDESTRIAN NETWORK

## PEDESTRIAN CIRCULATION





### LEGEND


- LESS THAN 5% (ADA ACCESSIBLE)
- 5.01% - 8.33% W/ HANDRAILS (ADA ACCESSIBLE)
- 5.01% - 8.33% W/O HANDRAILS
- GREATER THAN 8.33%





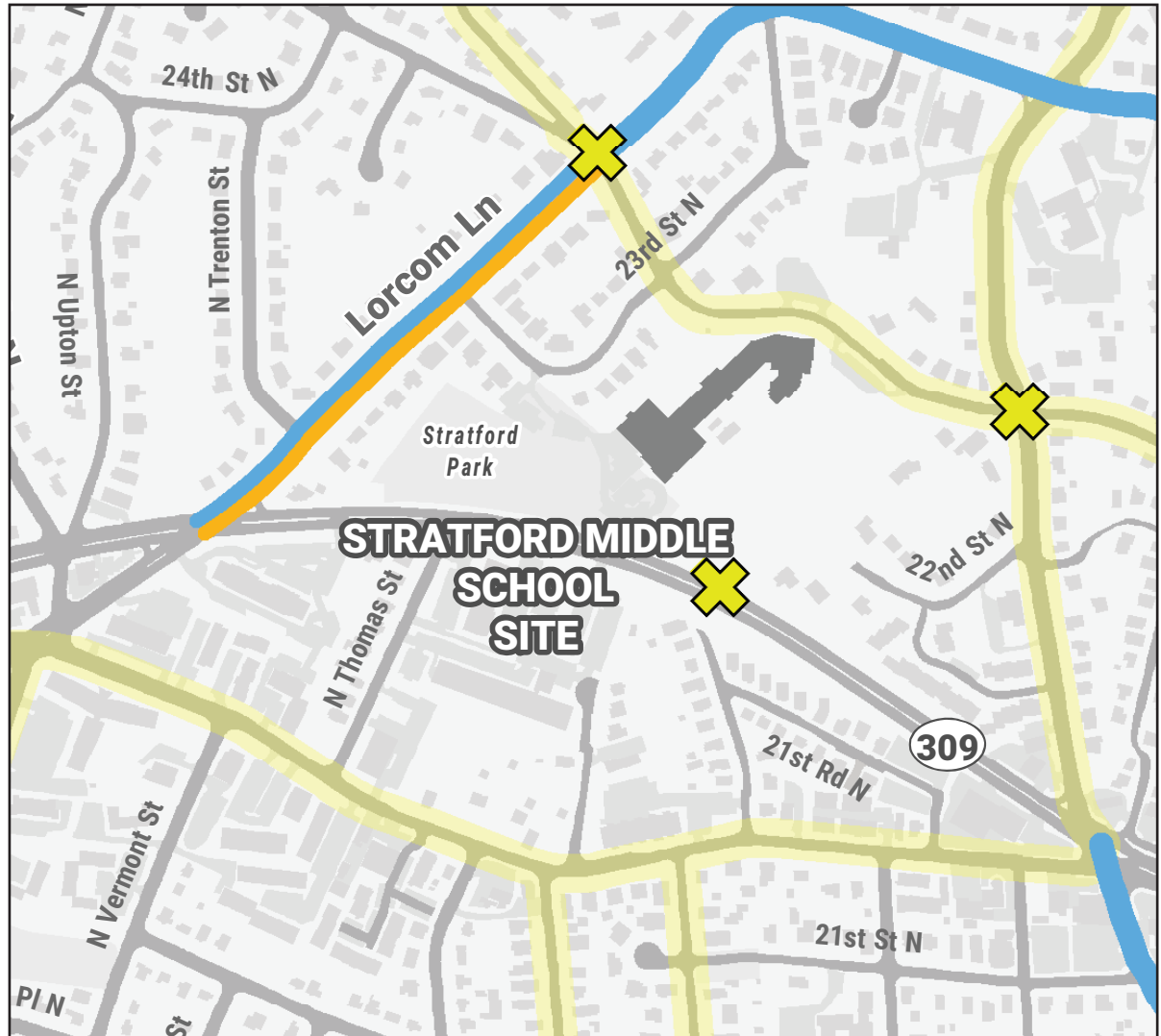
# ARLINGTON BIKE NETWORK

## Existing Facilities

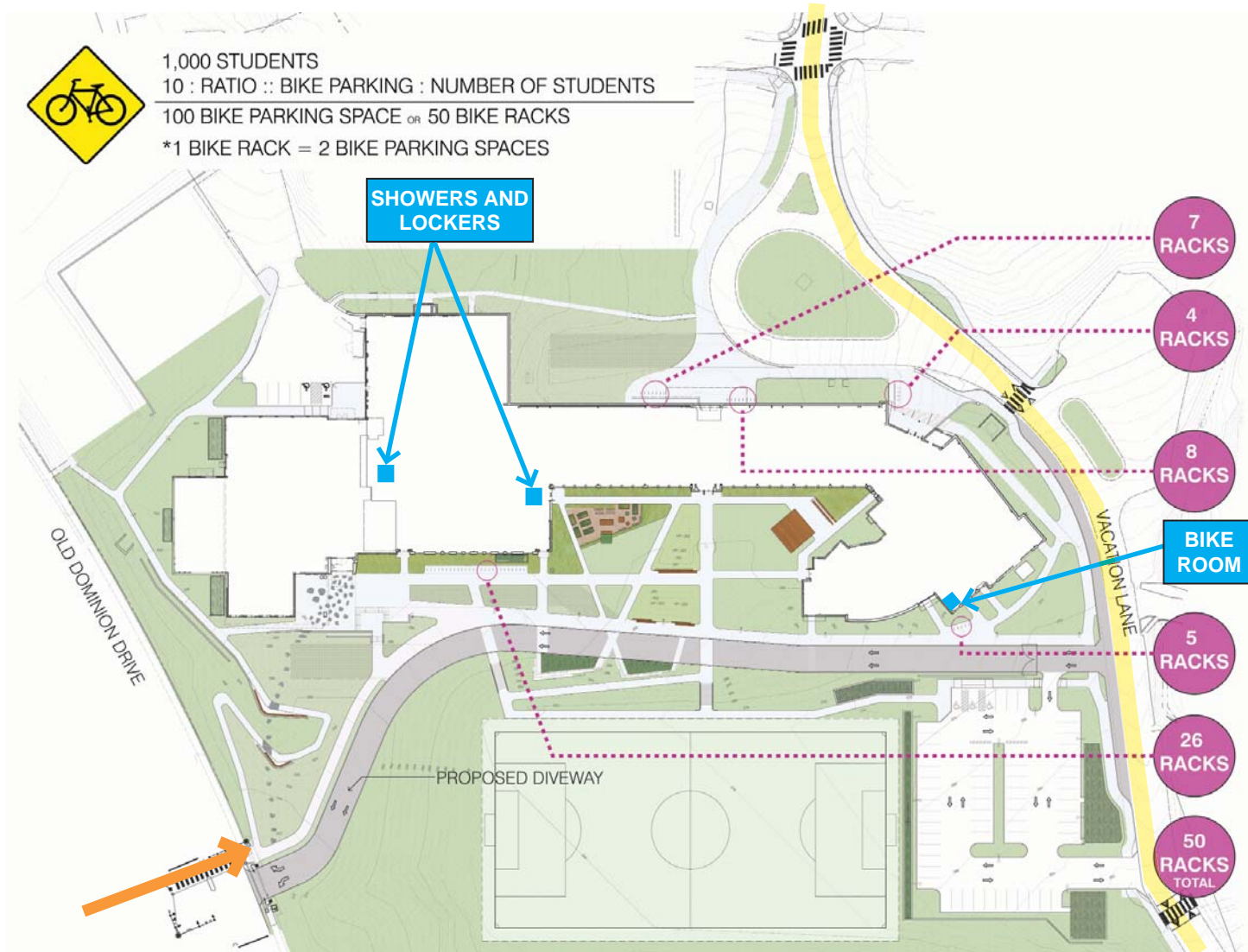
-  Off-Street Trail
-  Bike Lane
-  Bike Lane: One Side
-  Sharrow

 Recommended Crossing Guard Locations

-  Suggested Bike Route
-  Capital Bike Share Stations

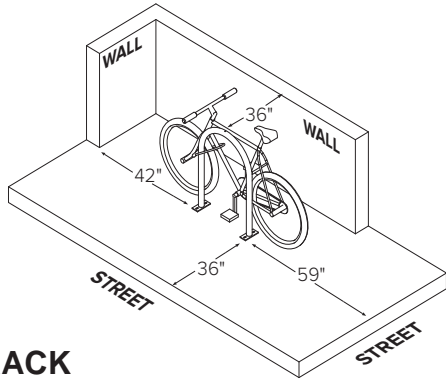


# BICYCLE ACCESS AND STORAGE

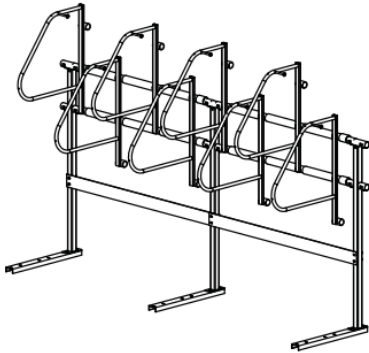


# BICYCLE ACCESS AND STORAGE

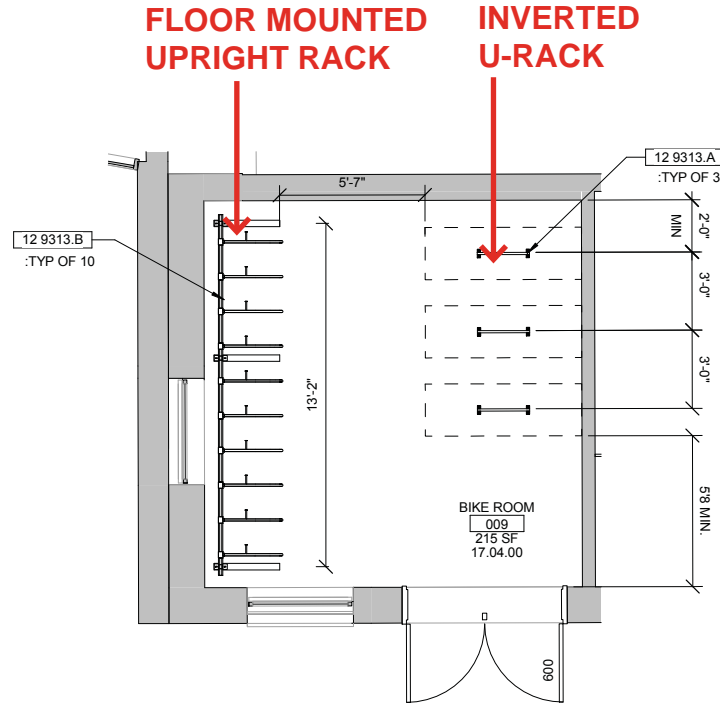
## BIKE ROOM PLAN



INVERTED U-RACK



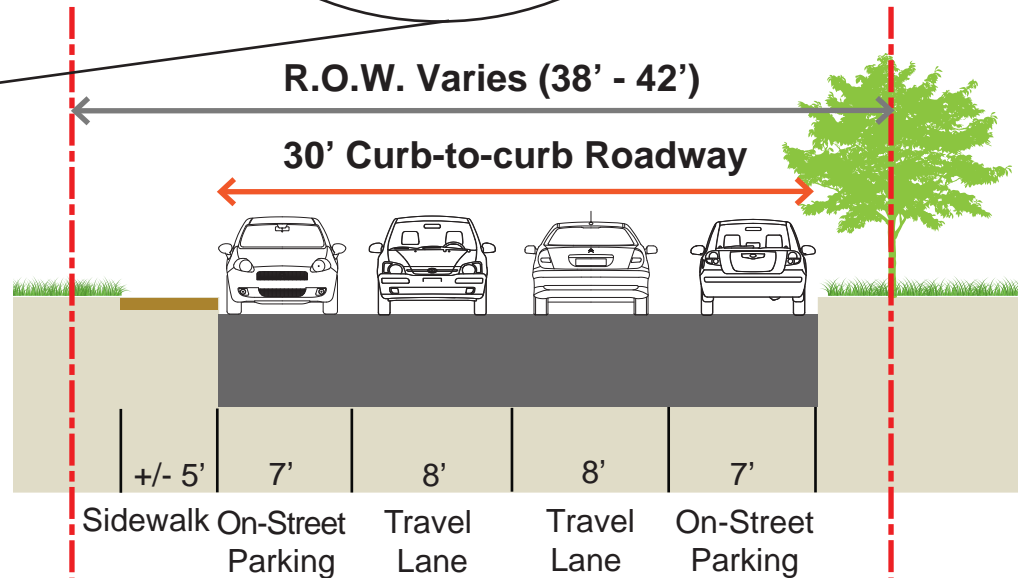
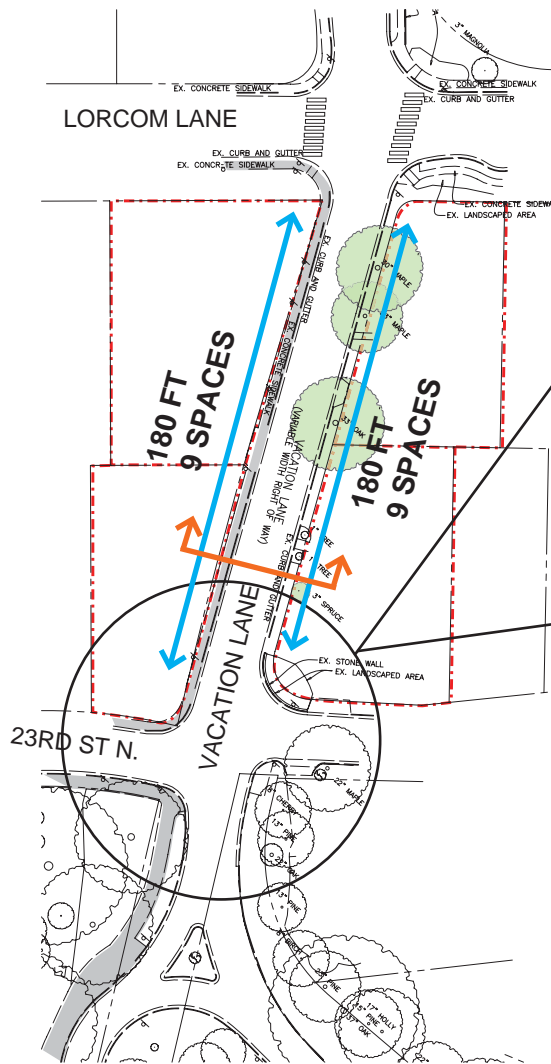
UPRIGHT RACK



BIKE ROOM PLAN

# VACATION LANE

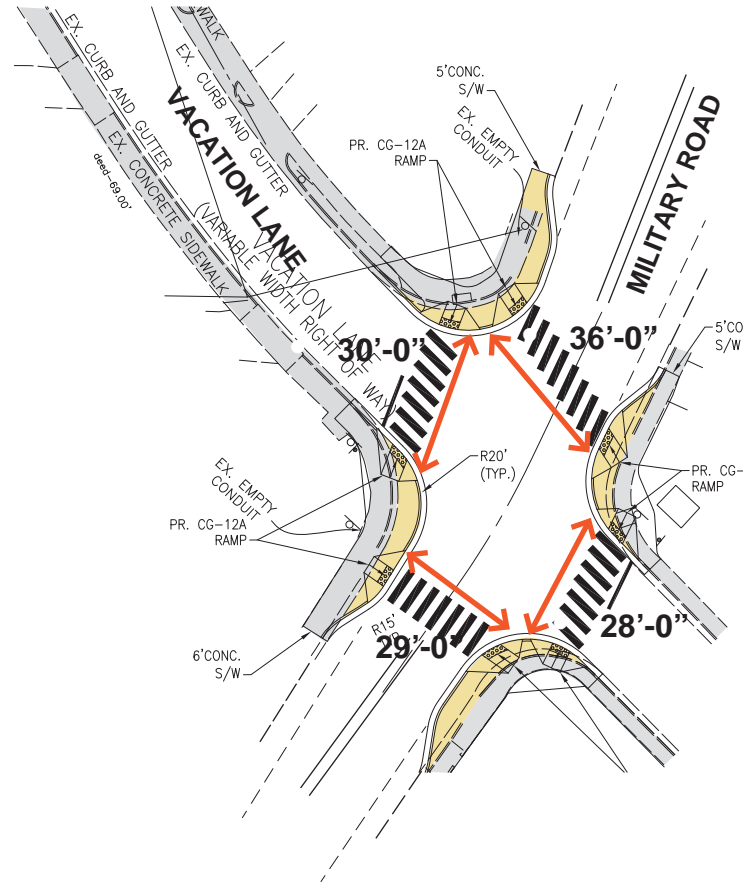
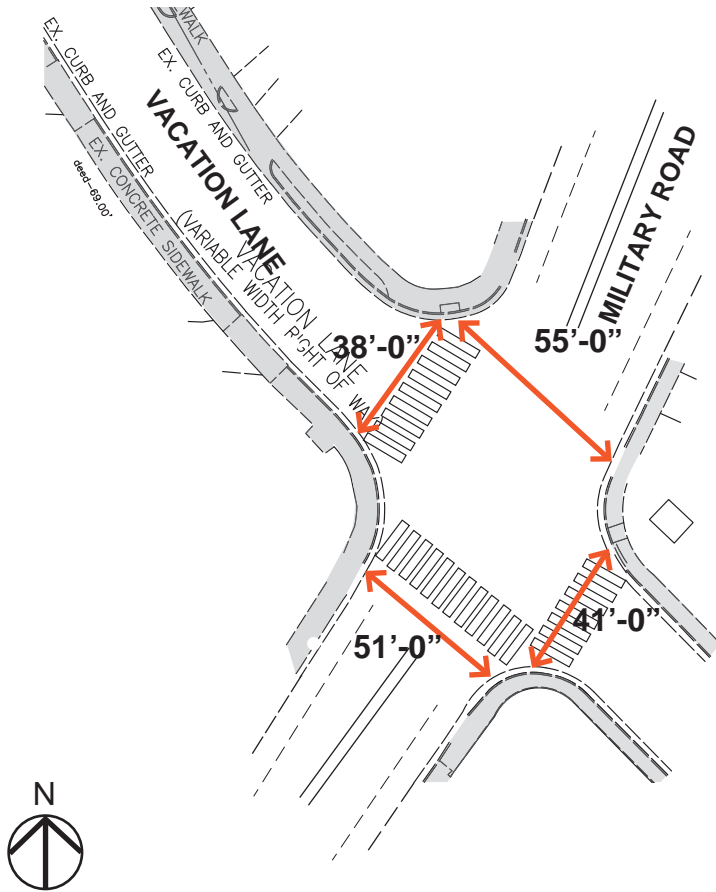
## EXISTING PLAN AND SECTION





# VACATION LANE AND MILITARY ROAD

## INTERSECTION PLAN





# BUS QUEUING



# FAMILY VEHICLE QUEUING

