

WILSON SCHOOL

1601 Wilson Boulevard, Arlington, VA

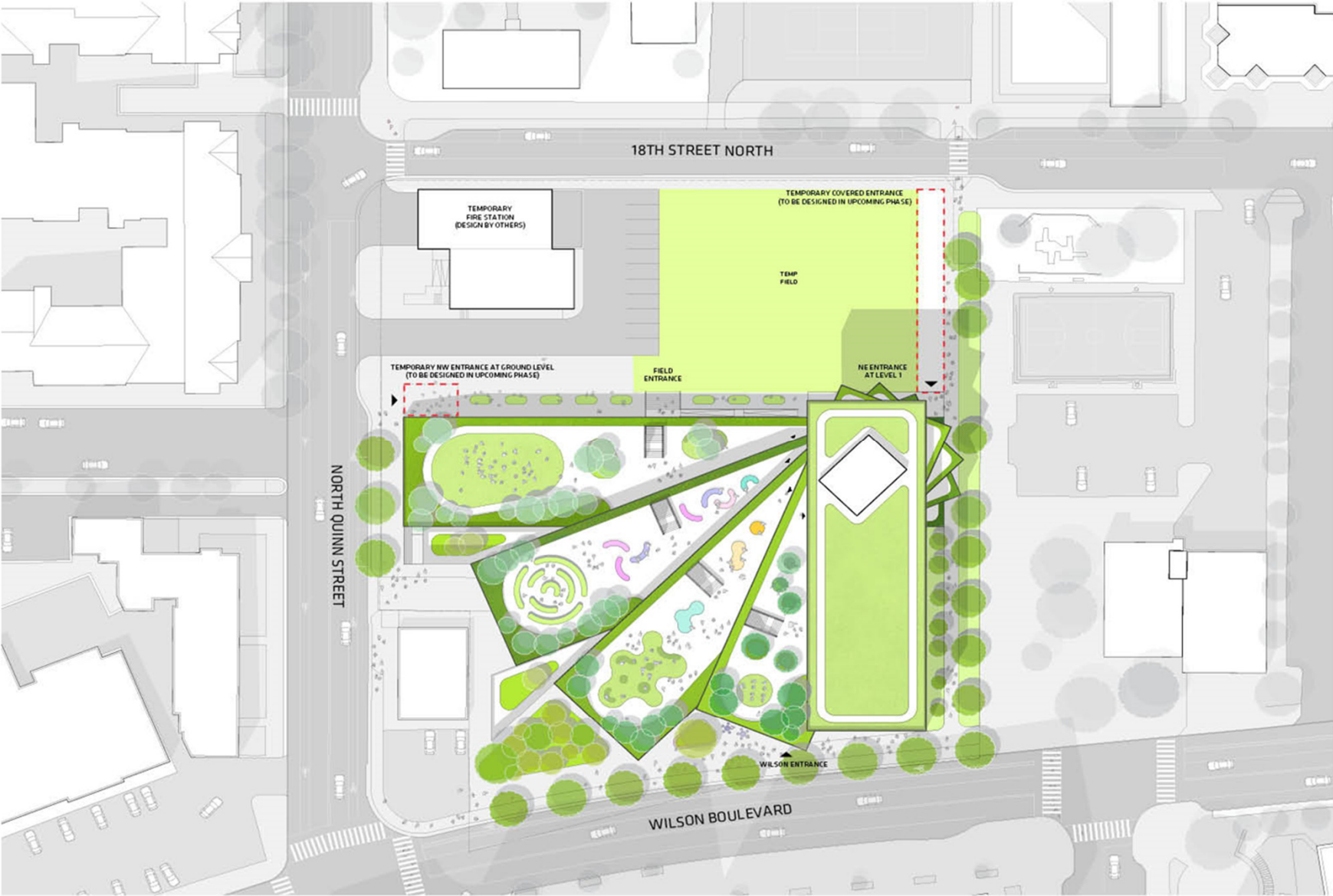
PFRC Review
February 01, 2017

LEO A DALY |  | BIG

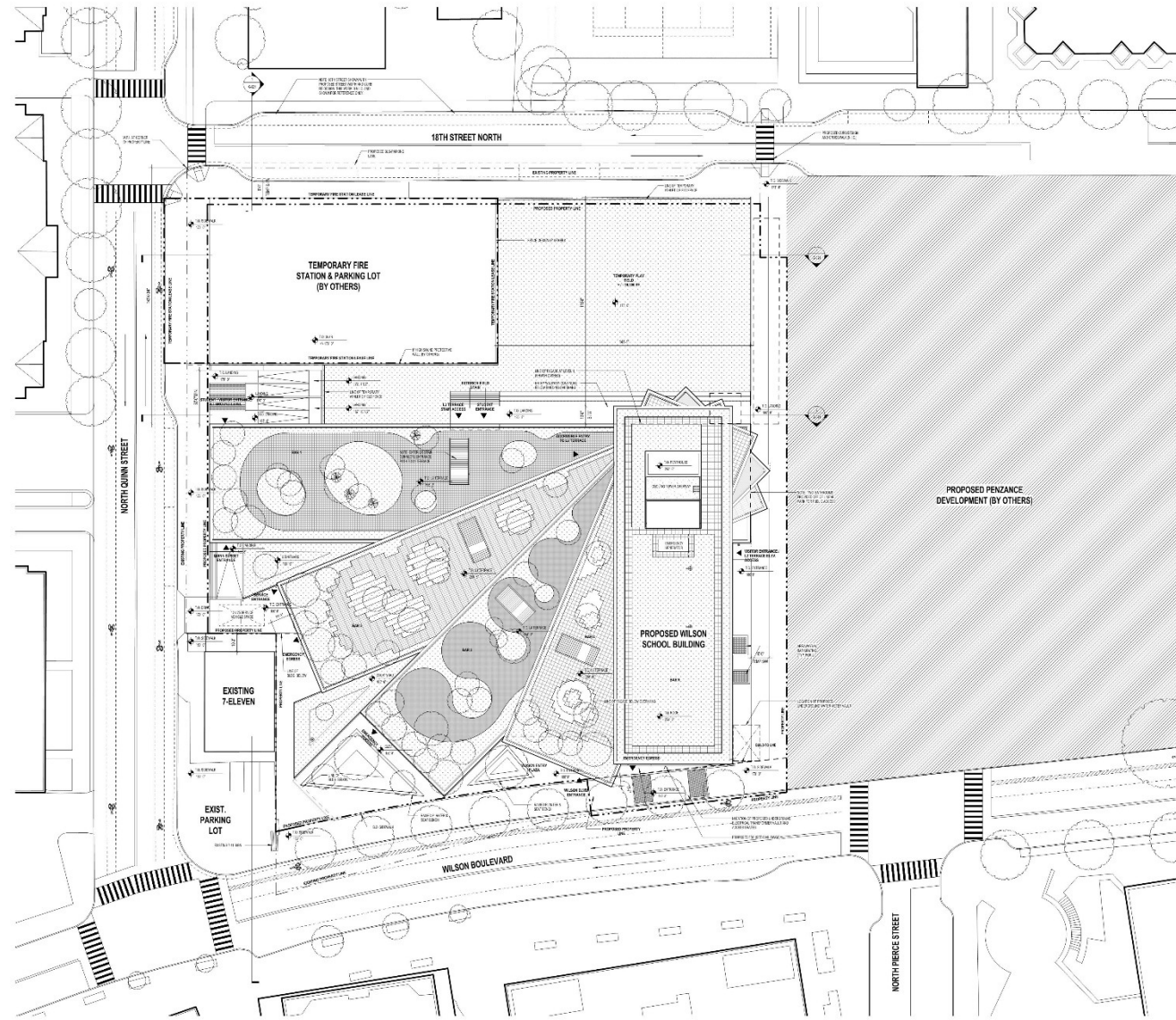
AERIAL MODEL PHOTO

SCHEMATIC DESIGN OVERVIEW





INTERIM CONDITION



PROPOSED SITE PLAN - PHASE I 1

ALL RIGHTS RESERVED BY WILSON SCHOOL DISTRICT
 THIS PLAN IS THE PROPERTY OF WILSON SCHOOL DISTRICT AND IS NOT TO BE REPRODUCED OR TRANSMITTED IN ANY FORM OR BY ANY MEANS, ELECTRONIC OR MECHANICAL, INCLUDING PHOTOCOPYING, RECORDING, OR BY ANY INFORMATION STORAGE AND RETRIEVAL SYSTEM, WITHOUT THE EXPRESS WRITTEN PERMISSION OF WILSON SCHOOL DISTRICT.
 THIS PLAN IS NOT TO BE CONSIDERED A CONTRACT DOCUMENT.
 ALL RIGHTS RESERVED BY WILSON SCHOOL DISTRICT

WILSON SCHOOL

ARCHITECT	ARCHITECT OF RECORD
LEO A DALY	ARCHITECT OF RECORD
BIG	ARCHITECT OF RECORD
SEED	ARCHITECT OF RECORD
Gordon	ARCHITECT OF RECORD
Silman	ARCHITECT OF RECORD
LITKAS	ARCHITECT OF RECORD
THE ATY	ARCHITECT OF RECORD
JurisHolden	ARCHITECT OF RECORD
THE ATY	ARCHITECT OF RECORD
JurisHolden	ARCHITECT OF RECORD
JurisHolden	ARCHITECT OF RECORD
JurisHolden	ARCHITECT OF RECORD

NO. 1	DATE	BY
NO. 2	DATE	BY
NO. 3	DATE	BY
NO. 4	DATE	BY
NO. 5	DATE	BY
NO. 6	DATE	BY
NO. 7	DATE	BY
NO. 8	DATE	BY
NO. 9	DATE	BY
NO. 10	DATE	BY
NO. 11	DATE	BY
NO. 12	DATE	BY
NO. 13	DATE	BY
NO. 14	DATE	BY
NO. 15	DATE	BY

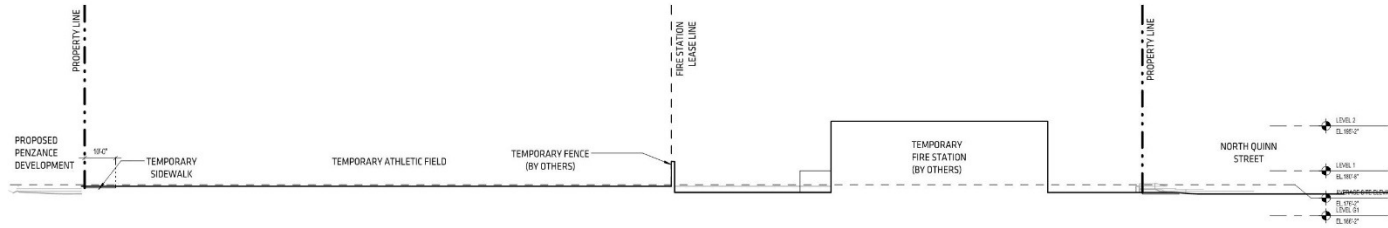


PROPOSED SITE PLAN - PHASE I

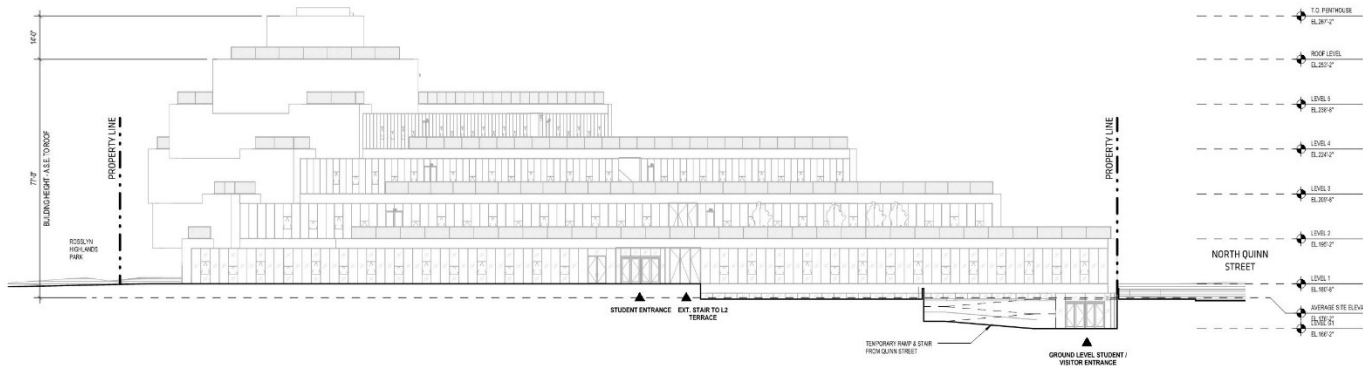
G-011

DATE PLOTTED: 11/15/2011 10:00:00 AM

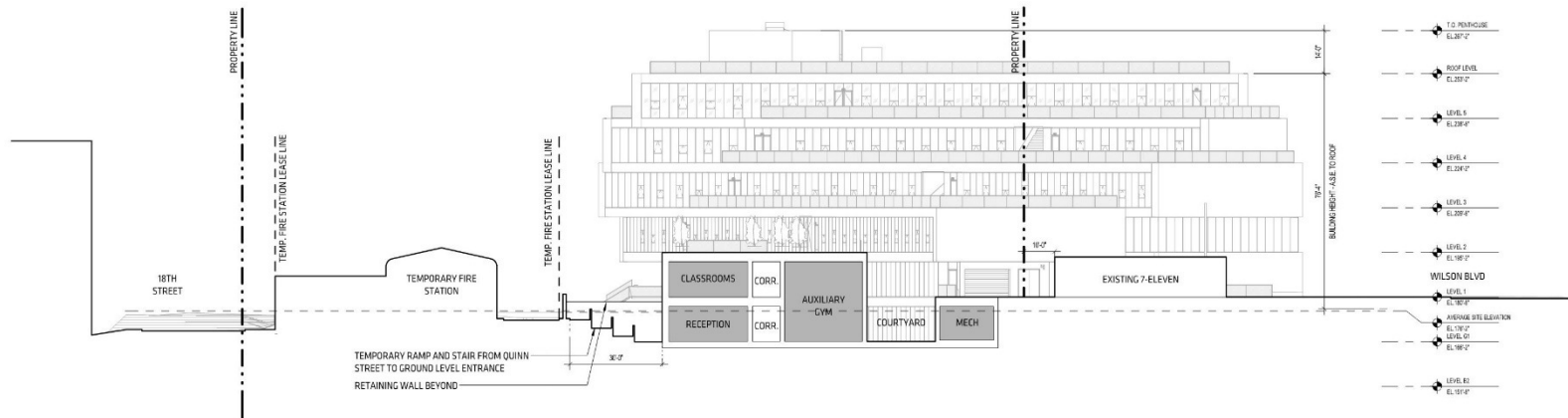
INTERIM CONDITION



E-W SITE SECTION THROUGH FIELD - INTERIM CONDITION 3
P=3/8"=1'



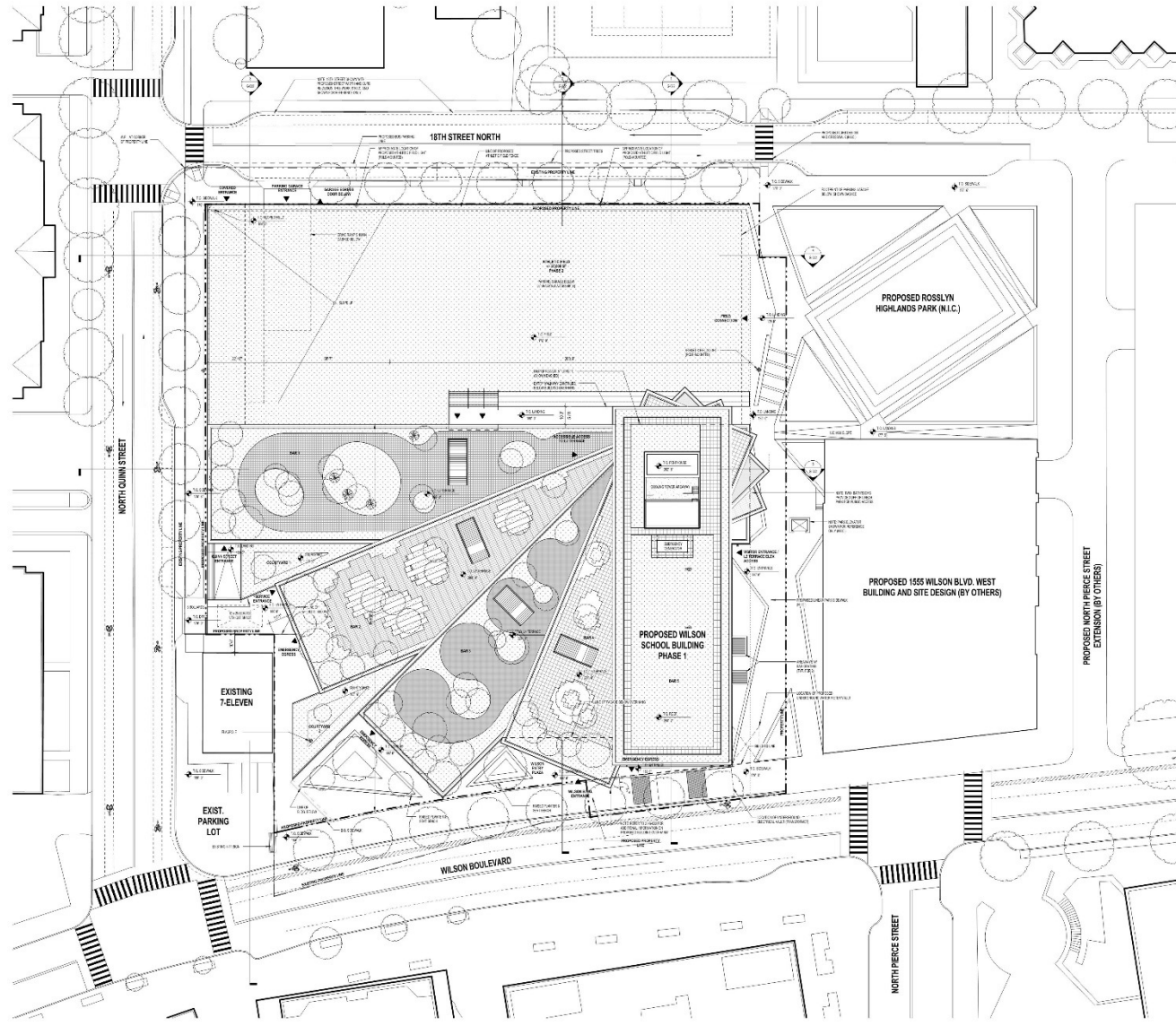
E-W SITE SECTION THROUGH TEMPORARY GROUND LEVEL ENTRANCE 2
P=3/8"=1'



N-S SITE SECTION THROUGH COURTYARD 1 - INTERIM CONDITION 1
P=3/8"=1'

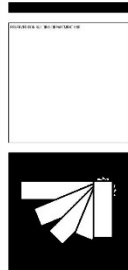


FINAL CONDITION



PROPOSED SITE PLAN - PHASE II 1

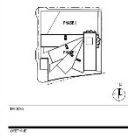
NOTES:
 1. ALL DIMENSIONS ARE TO FACE UNLESS NOTED OTHERWISE.
 2. ALL DIMENSIONS ARE TO FACE UNLESS NOTED OTHERWISE.
 3. ALL DIMENSIONS ARE TO FACE UNLESS NOTED OTHERWISE.
 4. ALL DIMENSIONS ARE TO FACE UNLESS NOTED OTHERWISE.
 5. ALL DIMENSIONS ARE TO FACE UNLESS NOTED OTHERWISE.



- WILSON SCHOOL**
- ARCHITECT**
LEO A DALY
 - ARCHITECT OF RECORD**
BIG
 - MECHANICAL ENGINEER**
Gordon
 - ELECTRICAL ENGINEER**
Silman
 - PLUMBING ENGINEER**
LITKAS
 - STRUCTURAL ENGINEER**
THE ATTY PROJECT
 - LANDSCAPE ARCHITECT**
Jefe Holden
 - INTERIOR DESIGNER**
THE ATTY PROJECT
 - EXTERIOR ARCHITECT**
HOLEN
 - EXTERIOR DESIGNER**
HOLEN
 - EXTERIOR ARCHITECT**
HOLEN
 - EXTERIOR DESIGNER**
HOLEN

REVISIONS:

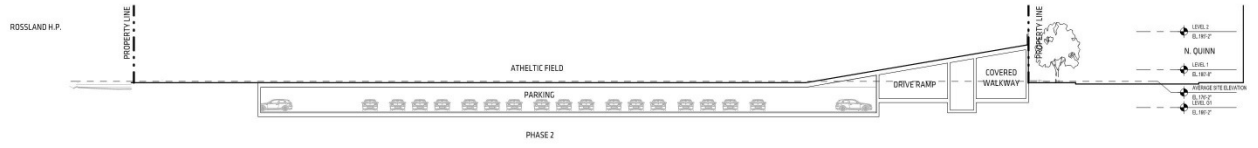
NO.	DATE	DESCRIPTION
1		
2		
3		
4		
5		



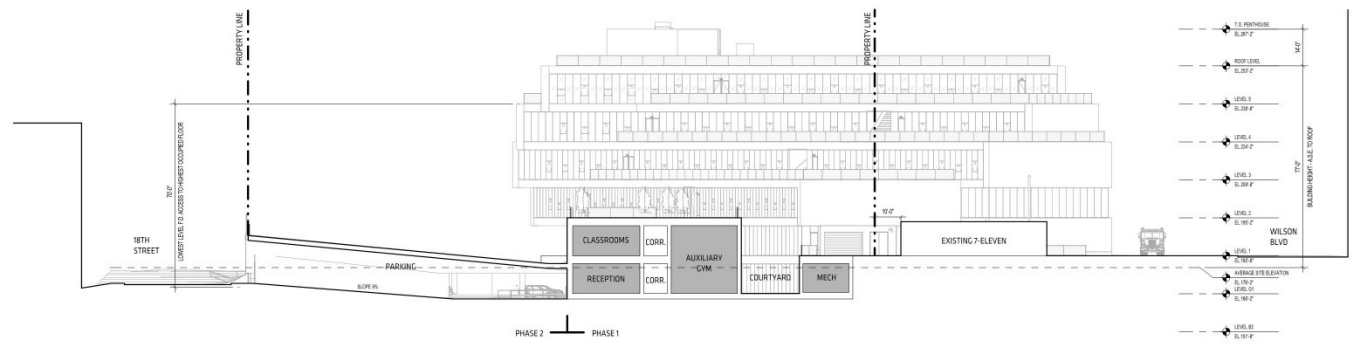
PROPOSED SITE PLAN - PHASE II

G-012

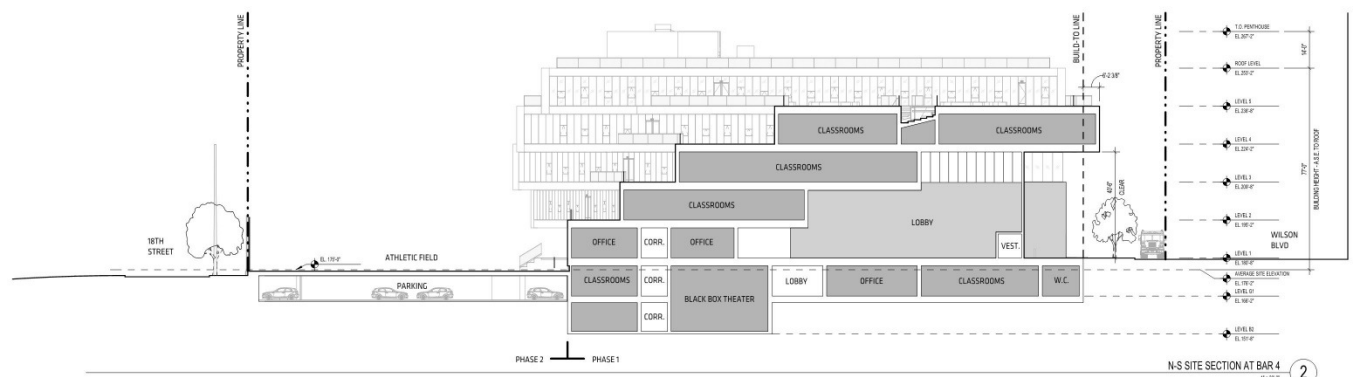
FINAL CONDITION



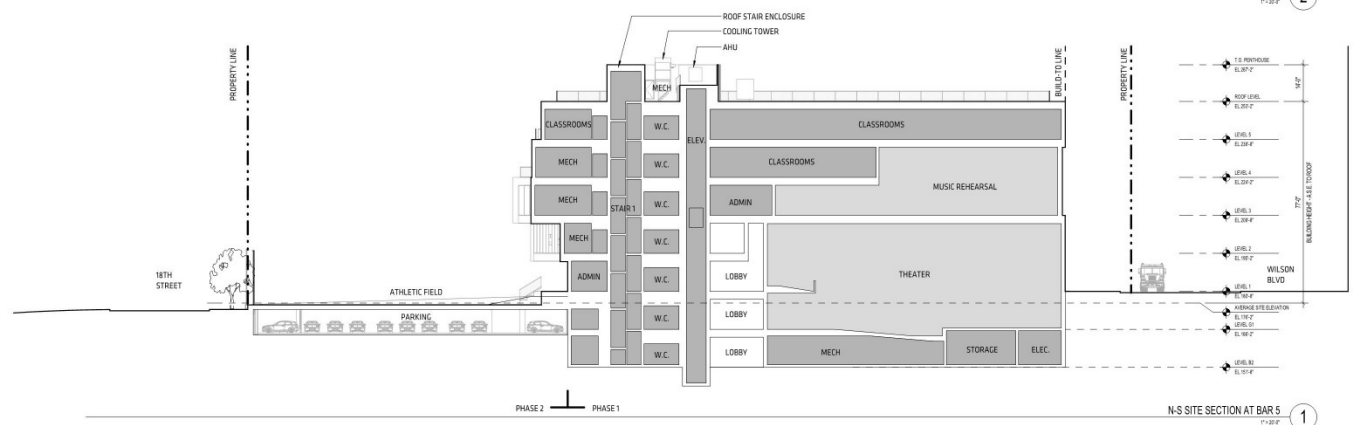
E-W SITE SECTION THROUGH PARKING GARAGE 4



N-S SITE SECTION THROUGH COURTYARD 1 3



N-S SITE SECTION AT BAR 4 2

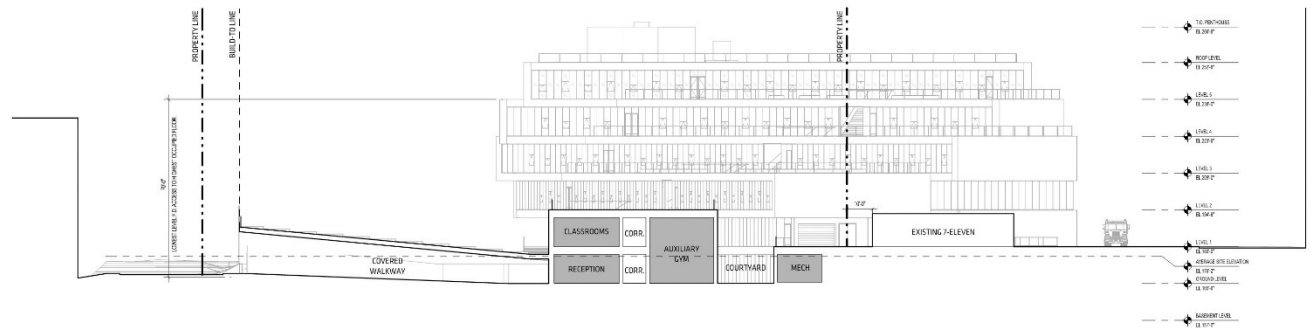


N-S SITE SECTION AT BAR 5 1

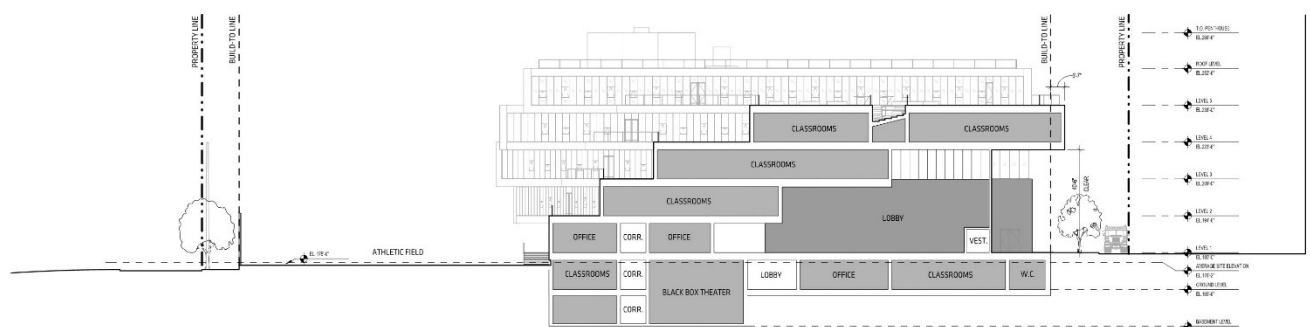
FINAL CONDITION - NO GARAGE



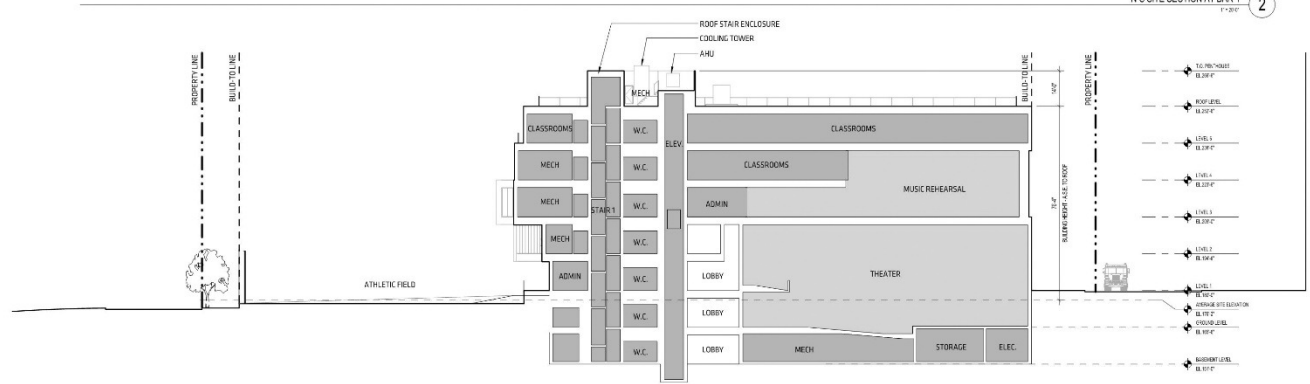
E-W SITE SECTION THROUGH COVERED ENTRANCE
1" = 20' 4



N-S SITE SECTION THROUGH COURTYARD 1
1" = 20' 3



N-S SITE SECTION AT BAR 4
1" = 20' 2

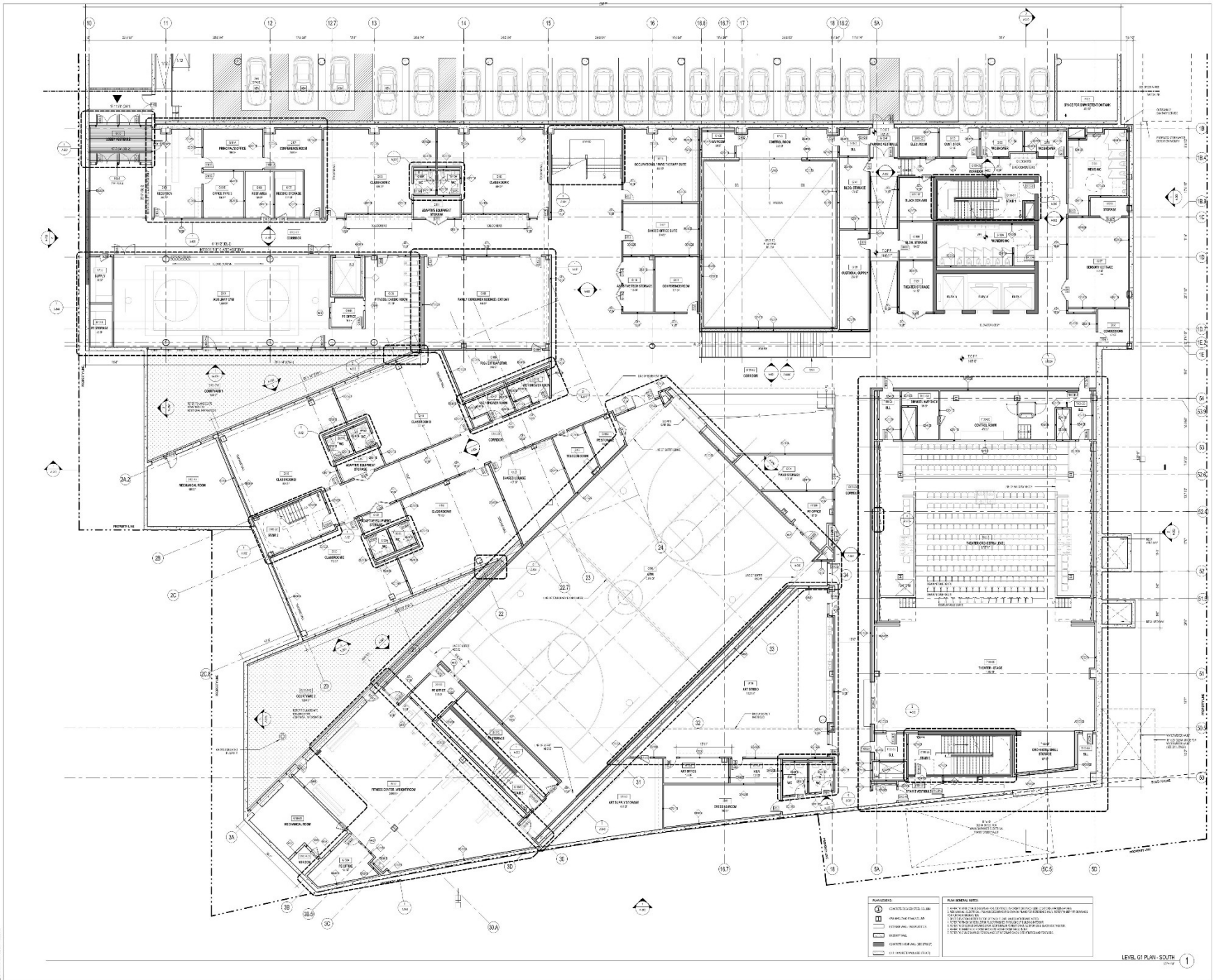


N-S SITE SECTION AT BAR 5
1" = 20' 1



RENDERING OF PIVOT POINT FROM FIELD







WILSON SCHOOL
SCHOOL DISTRICT

LEO A DALY
ARCHITECTS

BIG
BUILDINGS

Gordon
ARCHITECTS

Silman
ARCHITECTS

STANBANK
ARCHITECTS

JurisHolden
ARCHITECTS

MAEHLER
ARCHITECTS

TESTAMENT
ARCHITECTS

NOT FOR CONSTRUCTION

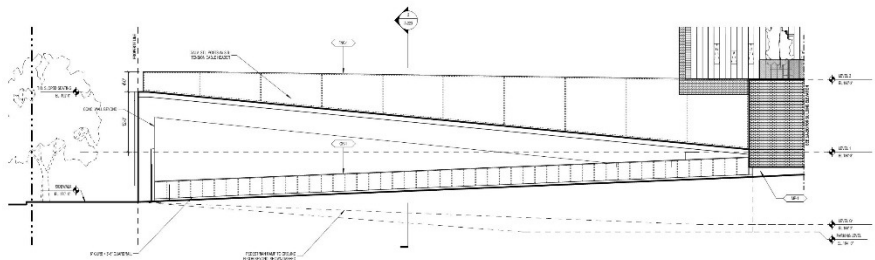
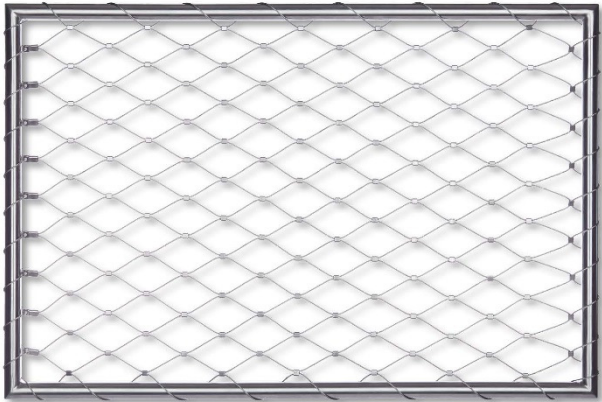


LEVEL G1 PLAN - SOUTH

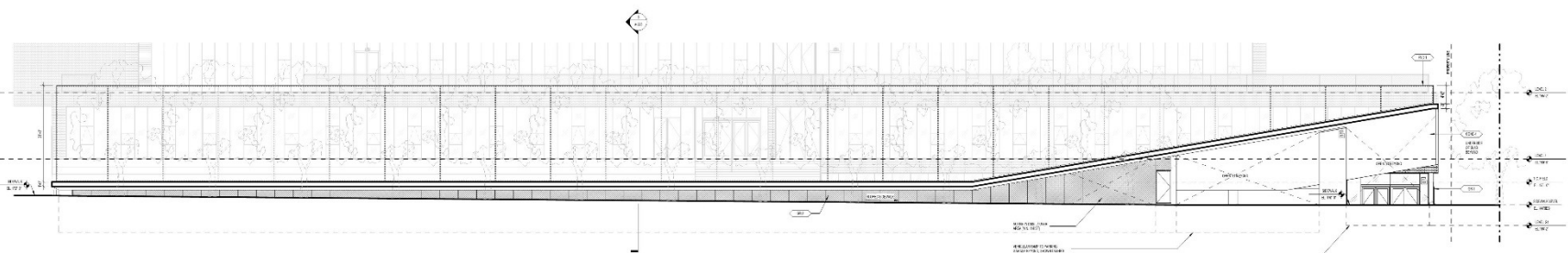
A-100A

REVISIONS	PLAN SHEET NOTES
<ul style="list-style-type: none"> 1 COVER SHEET 2 REVISIONS 3 REVISIONS 4 REVISIONS 5 REVISIONS 6 REVISIONS 7 REVISIONS 8 REVISIONS 9 REVISIONS 10 REVISIONS 11 REVISIONS 12 REVISIONS 13 REVISIONS 14 REVISIONS 15 REVISIONS 16 REVISIONS 17 REVISIONS 18 REVISIONS 19 REVISIONS 20 REVISIONS 21 REVISIONS 22 REVISIONS 23 REVISIONS 24 REVISIONS 25 REVISIONS 26 REVISIONS 27 REVISIONS 28 REVISIONS 29 REVISIONS 30 REVISIONS 	<p>1. THIS PLAN IS A PART OF THE PROJECT AND SHOULD BE USED IN CONJUNCTION WITH THE OTHER PLANS AND SPECIFICATIONS.</p> <p>2. THE CONTRACTOR SHALL BE RESPONSIBLE FOR OBTAINING ALL NECESSARY PERMITS AND APPROVALS FROM THE LOCAL AUTHORITIES.</p> <p>3. THE CONTRACTOR SHALL BE RESPONSIBLE FOR OBTAINING ALL NECESSARY PERMITS AND APPROVALS FROM THE LOCAL AUTHORITIES.</p> <p>4. THE CONTRACTOR SHALL BE RESPONSIBLE FOR OBTAINING ALL NECESSARY PERMITS AND APPROVALS FROM THE LOCAL AUTHORITIES.</p> <p>5. THE CONTRACTOR SHALL BE RESPONSIBLE FOR OBTAINING ALL NECESSARY PERMITS AND APPROVALS FROM THE LOCAL AUTHORITIES.</p>

LEVEL G1 PLAN - SOUTH 1



PARTIAL WEST ELEVATION AT NORTH QUINN STREET (2)



NORTH ELEVATION AT 18TH STREET (1)

GENERAL NOTES		GENERAL NOTES	
1. REFER TO SHEET 100 FOR GENERAL NOTES.		1. REFER TO SHEET 100 FOR GENERAL NOTES.	
2. REFER TO SHEET 100 FOR GENERAL NOTES.		2. REFER TO SHEET 100 FOR GENERAL NOTES.	
3. REFER TO SHEET 100 FOR GENERAL NOTES.		3. REFER TO SHEET 100 FOR GENERAL NOTES.	
4. REFER TO SHEET 100 FOR GENERAL NOTES.		4. REFER TO SHEET 100 FOR GENERAL NOTES.	
5. REFER TO SHEET 100 FOR GENERAL NOTES.		5. REFER TO SHEET 100 FOR GENERAL NOTES.	
6. REFER TO SHEET 100 FOR GENERAL NOTES.		6. REFER TO SHEET 100 FOR GENERAL NOTES.	
7. REFER TO SHEET 100 FOR GENERAL NOTES.		7. REFER TO SHEET 100 FOR GENERAL NOTES.	
8. REFER TO SHEET 100 FOR GENERAL NOTES.		8. REFER TO SHEET 100 FOR GENERAL NOTES.	
9. REFER TO SHEET 100 FOR GENERAL NOTES.		9. REFER TO SHEET 100 FOR GENERAL NOTES.	
10. REFER TO SHEET 100 FOR GENERAL NOTES.		10. REFER TO SHEET 100 FOR GENERAL NOTES.	

WILSON SCHOOL
1000 QUINN STREET, WILSON, BC V3N 1V4

ARCHITECT
LEO A DALY
LEO A DALY ARCHITECTS
1000 QUINN STREET, WILSON, BC V3N 1V4
TEL: (250) 363-1111
WWW.LEODALY.COM

STRUCTURAL ENGINEER
BIG
BIG CONSULTANTS
1000 QUINN STREET, WILSON, BC V3N 1V4
TEL: (250) 363-1111
WWW.BIGCONSULTANTS.COM

MECHANICAL ENGINEER
GORDON
GORDON ENGINEERS
1000 QUINN STREET, WILSON, BC V3N 1V4
TEL: (250) 363-1111
WWW.GORDONENGINEERS.COM

ELECTRICAL ENGINEER
GORDON
GORDON ENGINEERS
1000 QUINN STREET, WILSON, BC V3N 1V4
TEL: (250) 363-1111
WWW.GORDONENGINEERS.COM

PLUMBING ENGINEER
GORDON
GORDON ENGINEERS
1000 QUINN STREET, WILSON, BC V3N 1V4
TEL: (250) 363-1111
WWW.GORDONENGINEERS.COM

LANDSCAPE ARCHITECT
SILMAN
SILMAN LANDSCAPE ARCHITECTURE
1000 QUINN STREET, WILSON, BC V3N 1V4
TEL: (250) 363-1111
WWW.SILMANLANDSCAPE.COM

INTERIOR DESIGNER
SILMAN
SILMAN INTERIOR DESIGN
1000 QUINN STREET, WILSON, BC V3N 1V4
TEL: (250) 363-1111
WWW.SILMANINTERIOR.COM

THEATRE DESIGNER
JURFOLD
JURFOLD THEATRE DESIGN
1000 QUINN STREET, WILSON, BC V3N 1V4
TEL: (250) 363-1111
WWW.JURFOLDTHEATREDESIGN.COM

LANDSCAPE ARCHITECT
JURFOLD
JURFOLD LANDSCAPE ARCHITECTURE
1000 QUINN STREET, WILSON, BC V3N 1V4
TEL: (250) 363-1111
WWW.JURFOLDLANDSCAPE.COM

MECHANICAL ENGINEER
JURFOLD
JURFOLD MECHANICAL ENGINEERING
1000 QUINN STREET, WILSON, BC V3N 1V4
TEL: (250) 363-1111
WWW.JURFOLDMECHANICAL.COM

ELECTRICAL ENGINEER
JURFOLD
JURFOLD ELECTRICAL ENGINEERING
1000 QUINN STREET, WILSON, BC V3N 1V4
TEL: (250) 363-1111
WWW.JURFOLDELECTRICAL.COM

PLUMBING ENGINEER
JURFOLD
JURFOLD PLUMBING ENGINEERING
1000 QUINN STREET, WILSON, BC V3N 1V4
TEL: (250) 363-1111
WWW.JURFOLDPLUMBING.COM

LANDSCAPE ARCHITECT
MIDWEST
MIDWEST LANDSCAPE ARCHITECTURE
1000 QUINN STREET, WILSON, BC V3N 1V4
TEL: (250) 363-1111
WWW.MIDWESTLANDSCAPE.COM

MECHANICAL ENGINEER
MIDWEST
MIDWEST MECHANICAL ENGINEERING
1000 QUINN STREET, WILSON, BC V3N 1V4
TEL: (250) 363-1111
WWW.MIDWESTMECHANICAL.COM

ELECTRICAL ENGINEER
MIDWEST
MIDWEST ELECTRICAL ENGINEERING
1000 QUINN STREET, WILSON, BC V3N 1V4
TEL: (250) 363-1111
WWW.MIDWESTELECTRICAL.COM

PLUMBING ENGINEER
MIDWEST
MIDWEST PLUMBING ENGINEERING
1000 QUINN STREET, WILSON, BC V3N 1V4
TEL: (250) 363-1111
WWW.MIDWESTPLUMBING.COM

THEATRE DESIGNER
MIDWEST
MIDWEST THEATRE DESIGN
1000 QUINN STREET, WILSON, BC V3N 1V4
TEL: (250) 363-1111
WWW.MIDWESTTHEATREDESIGN.COM

LANDSCAPE ARCHITECT
MIDWEST
MIDWEST LANDSCAPE ARCHITECTURE
1000 QUINN STREET, WILSON, BC V3N 1V4
TEL: (250) 363-1111
WWW.MIDWESTLANDSCAPE.COM

MECHANICAL ENGINEER
MIDWEST
MIDWEST MECHANICAL ENGINEERING
1000 QUINN STREET, WILSON, BC V3N 1V4
TEL: (250) 363-1111
WWW.MIDWESTMECHANICAL.COM

ELECTRICAL ENGINEER
MIDWEST
MIDWEST ELECTRICAL ENGINEERING
1000 QUINN STREET, WILSON, BC V3N 1V4
TEL: (250) 363-1111
WWW.MIDWESTELECTRICAL.COM

PLUMBING ENGINEER
MIDWEST
MIDWEST PLUMBING ENGINEERING
1000 QUINN STREET, WILSON, BC V3N 1V4
TEL: (250) 363-1111
WWW.MIDWESTPLUMBING.COM

LANDSCAPE ARCHITECT
MIDWEST
MIDWEST LANDSCAPE ARCHITECTURE
1000 QUINN STREET, WILSON, BC V3N 1V4
TEL: (250) 363-1111
WWW.MIDWESTLANDSCAPE.COM

MECHANICAL ENGINEER
MIDWEST
MIDWEST MECHANICAL ENGINEERING
1000 QUINN STREET, WILSON, BC V3N 1V4
TEL: (250) 363-1111
WWW.MIDWESTMECHANICAL.COM

ELECTRICAL ENGINEER
MIDWEST
MIDWEST ELECTRICAL ENGINEERING
1000 QUINN STREET, WILSON, BC V3N 1V4
TEL: (250) 363-1111
WWW.MIDWESTELECTRICAL.COM

PLUMBING ENGINEER
MIDWEST
MIDWEST PLUMBING ENGINEERING
1000 QUINN STREET, WILSON, BC V3N 1V4
TEL: (250) 363-1111
WWW.MIDWESTPLUMBING.COM

THEATRE DESIGNER
MIDWEST
MIDWEST THEATRE DESIGN
1000 QUINN STREET, WILSON, BC V3N 1V4
TEL: (250) 363-1111
WWW.MIDWESTTHEATREDESIGN.COM

LANDSCAPE ARCHITECT
MIDWEST
MIDWEST LANDSCAPE ARCHITECTURE
1000 QUINN STREET, WILSON, BC V3N 1V4
TEL: (250) 363-1111
WWW.MIDWESTLANDSCAPE.COM

MECHANICAL ENGINEER
MIDWEST
MIDWEST MECHANICAL ENGINEERING
1000 QUINN STREET, WILSON, BC V3N 1V4
TEL: (250) 363-1111
WWW.MIDWESTMECHANICAL.COM

ELECTRICAL ENGINEER
MIDWEST
MIDWEST ELECTRICAL ENGINEERING
1000 QUINN STREET, WILSON, BC V3N 1V4
TEL: (250) 363-1111
WWW.MIDWESTELECTRICAL.COM

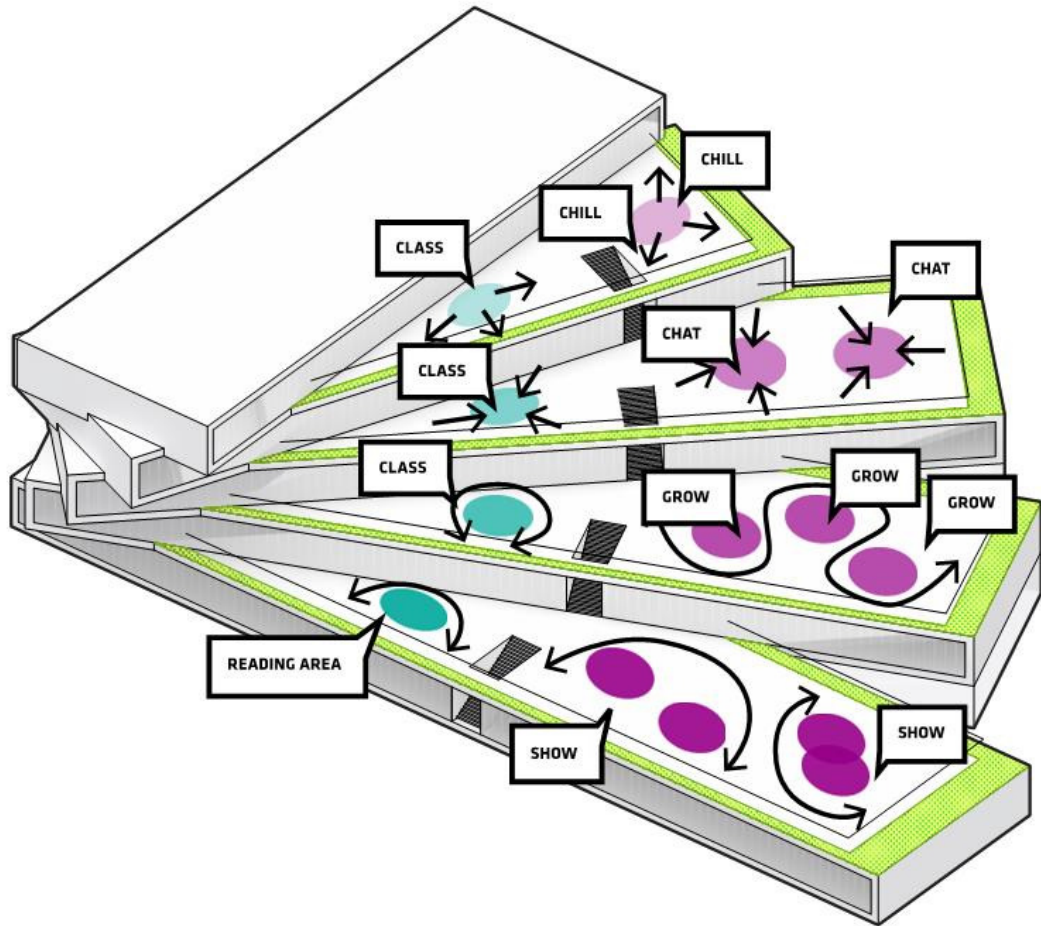
PLUMBING ENGINEER
MIDWEST
MIDWEST PLUMBING ENGINEERING
1000 QUINN STREET, WILSON, BC V3N 1V4
TEL: (250) 363-1111
WWW.MIDWESTPLUMBING.COM

ATHLETIC FIELD ELEVATIONS

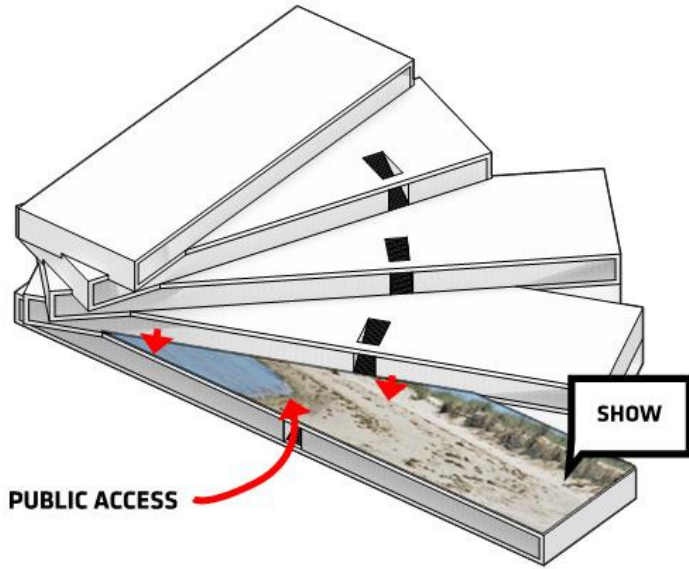
A-208



ROOF TERRACES



USE ZONES + ORIENTATION



West 67th S Adventure Playground, NYC. Dattner, 1967

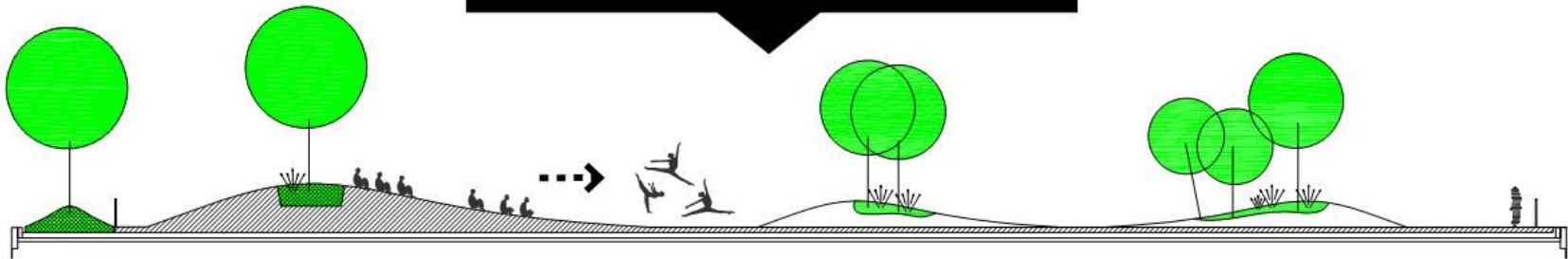


Landscape by Maya Lin, 2006

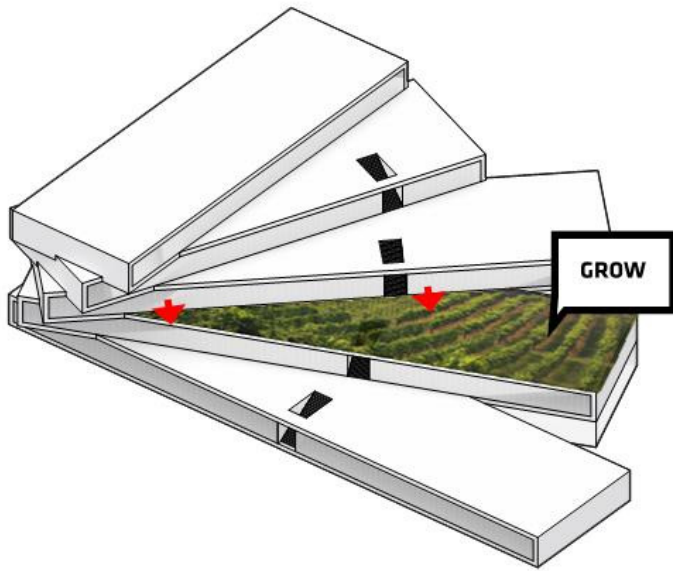


Playground by Aldo Van Eyck. 1945

DUNE TOPOGRAPHY ALLOWS LARGE SEATING AREAS FOR OUTDOOR CINEMA AND OTHER PUBLIC PROGRAM. IT ALSO PROVIDES SHADED AREAS FOR OUTDOOR READING AND RELAXING.



PROGRAMMATIC LANDSCAPE: DUNES, TERRACE 1



Rooftop Garden, Queens

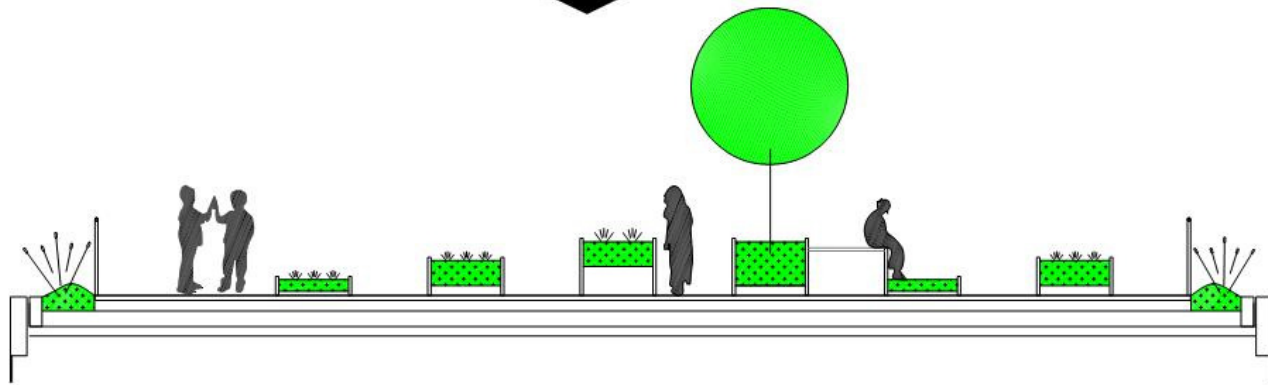


Landscape by Chyutin Architects

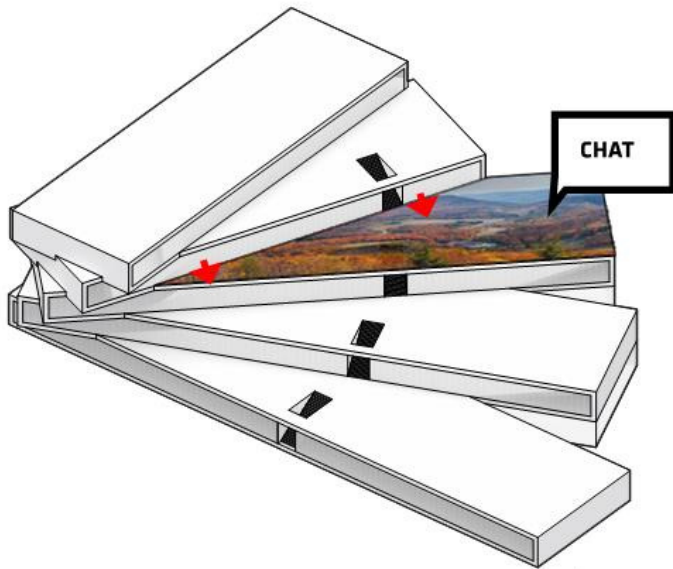


Gammel Hellerup Gymnasium by BIG

URBAN FARMING. LINEAR VEGETATION ARRANGEMENT.



PROGRAMMATIC LANDSCAPE: FARMING. TERRACE 2



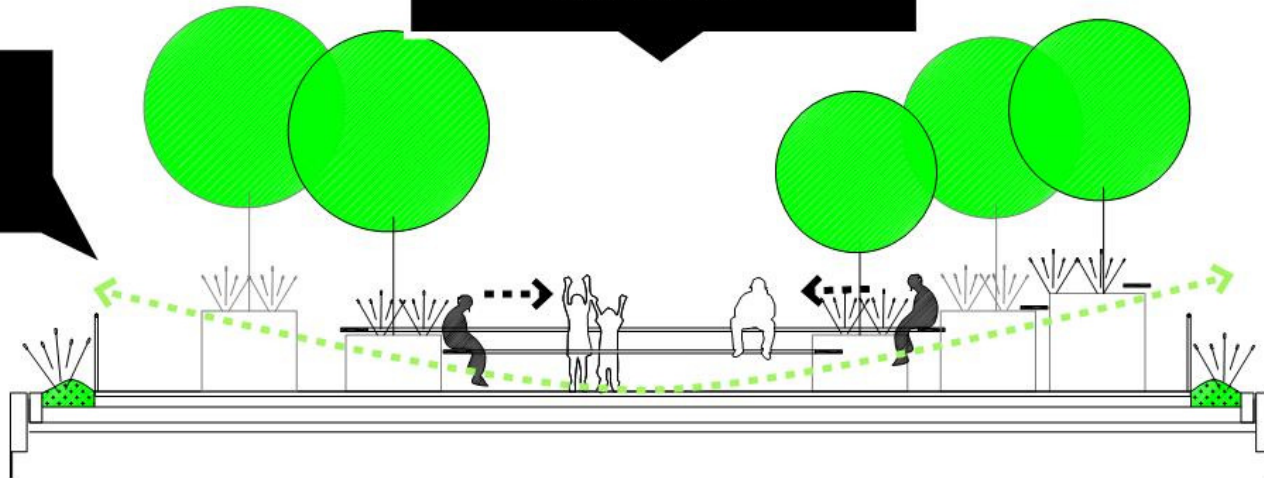
Shanghai Houtan Park by Turenscape



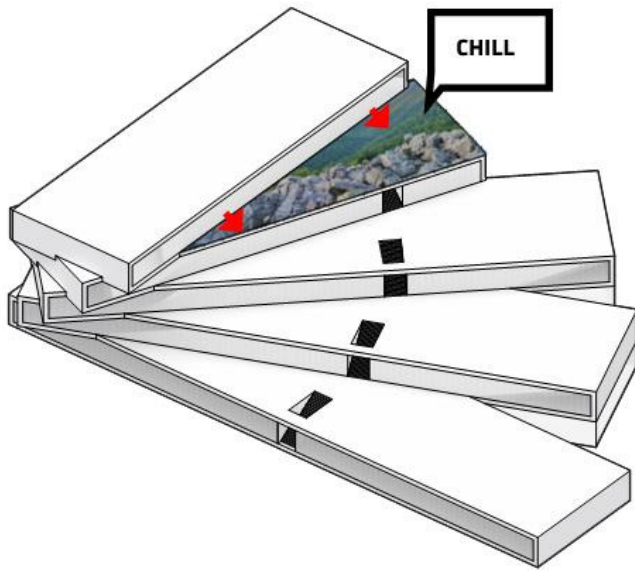
Playground at Central Park, NYC

VALLEY LIKE CONFIGURATION FOR SMALLER GROUPS TO GATHER

PLANTING BEDS AND BENCHES ARRANGED TO CREATE VALLEY GALLERIES



PROGRAMMATIC LANDSCAPE. VALLEY. TERRACE 3



Brutalist playground in UK.



Zaanhof, Spaarndammerbuurt, Amsterdam-Oudwest, 1959

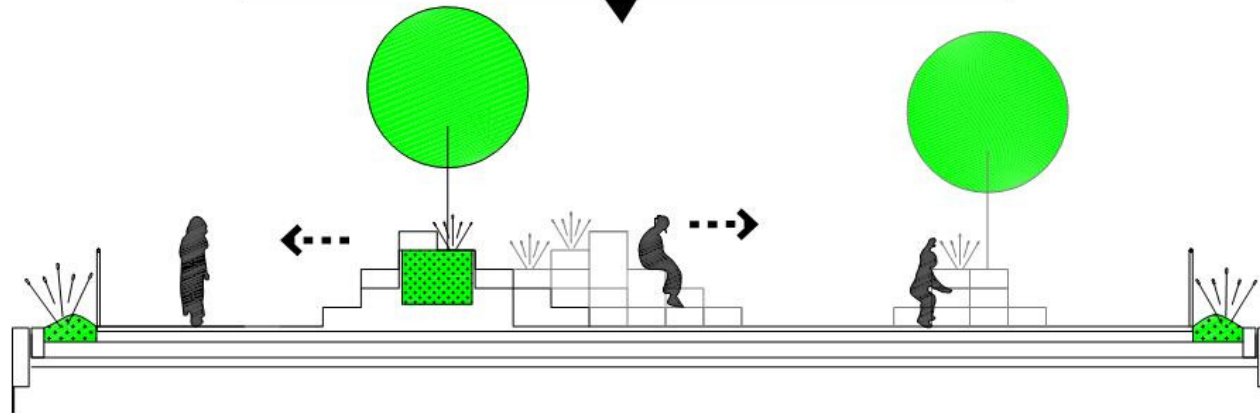


Amsterdam-Oudwest, 1959 by A. v Eyck



School by Herman Hertzberger

PIXELATED LANDSCAPE RESEMBLING A ROCKY MOUNTAIN THAT STUDENTS CAN OCCUPY

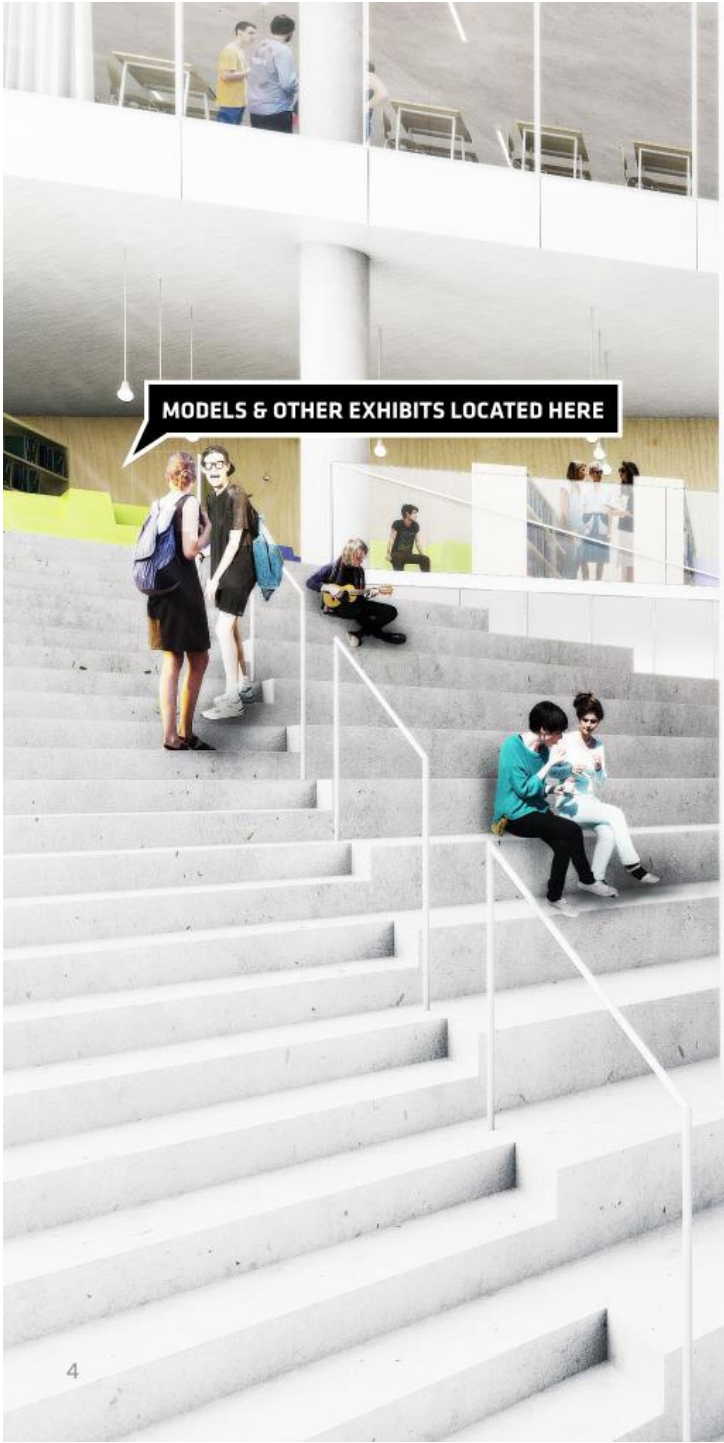


PROGRAMMATIC LANDSCAPE: ROCKY LANDSCAPE. TERRACE 4



ROOF PLAN

PROPOSED COMMEMORATION



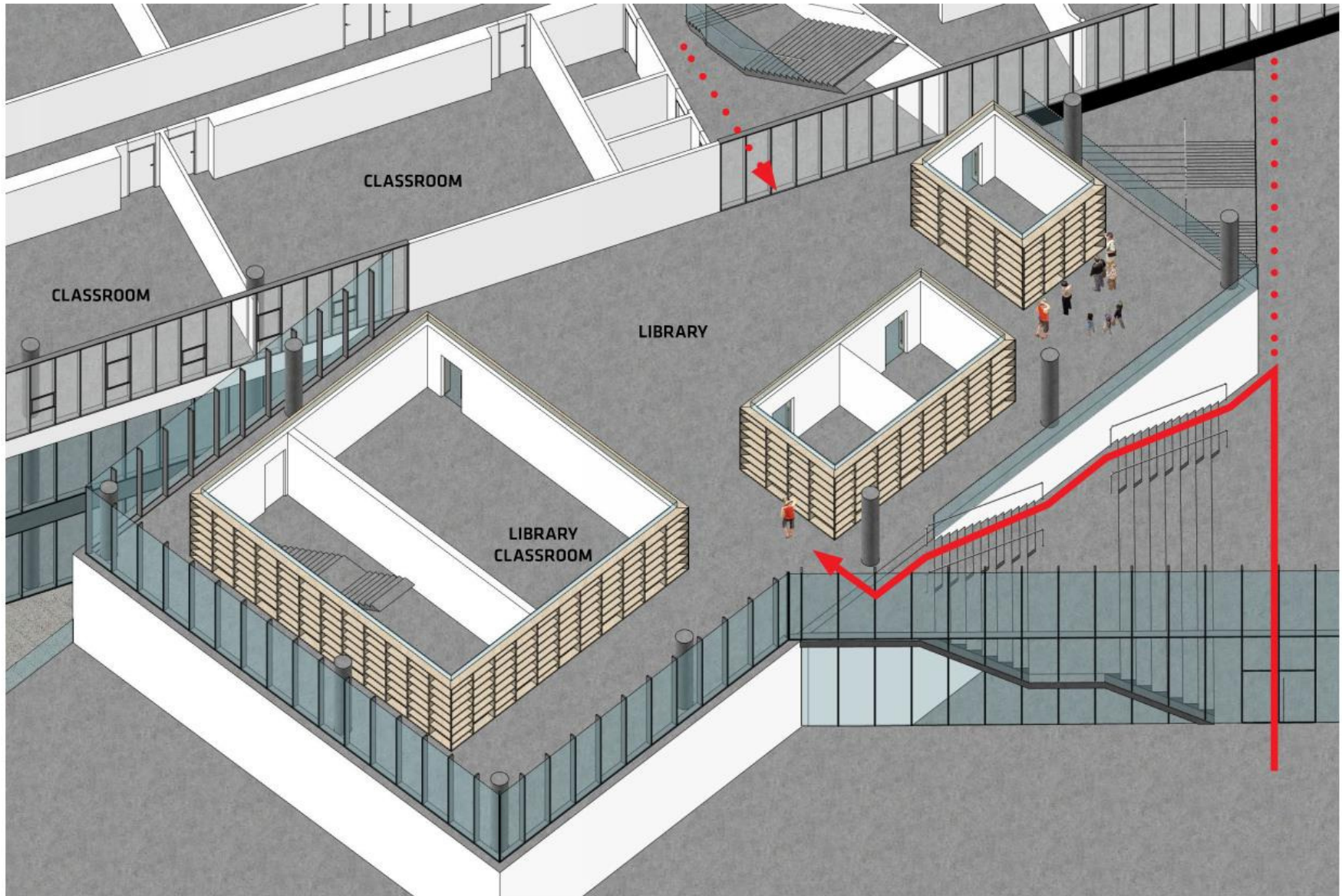
MODELS & OTHER EXHIBITS LOCATED HERE



PROPOSED COMMEMORATION

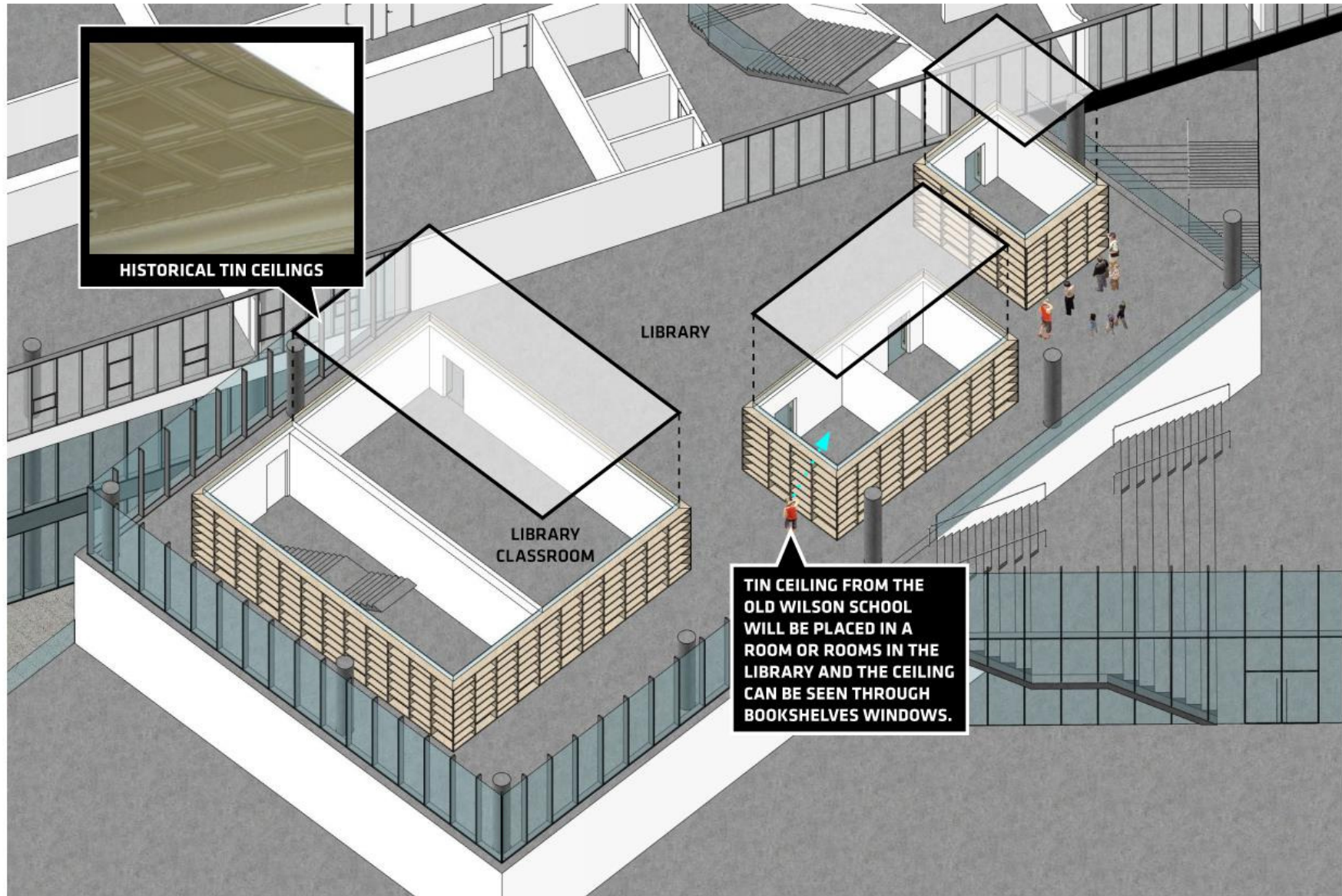
ACCESS TO LIBRARY MEZZANINE

PROPOSED COMMEMORATION



HISTORICAL CEILING POTENTIAL LOCATION

PROPOSED COMMEMORATION



PLAQUE POTENTIAL LOCATION

PROPOSED COMMEMORATION



An architectural rendering of the Wilson School building at dusk. The building features a prominent, angular, white facade with large glass windows and a cantilevered section. The interior lights are on, and some people are visible inside. The building is set against a dark sky with a few trees in the foreground. The text "THANK YOU" is overlaid in the upper right corner.

THANK YOU