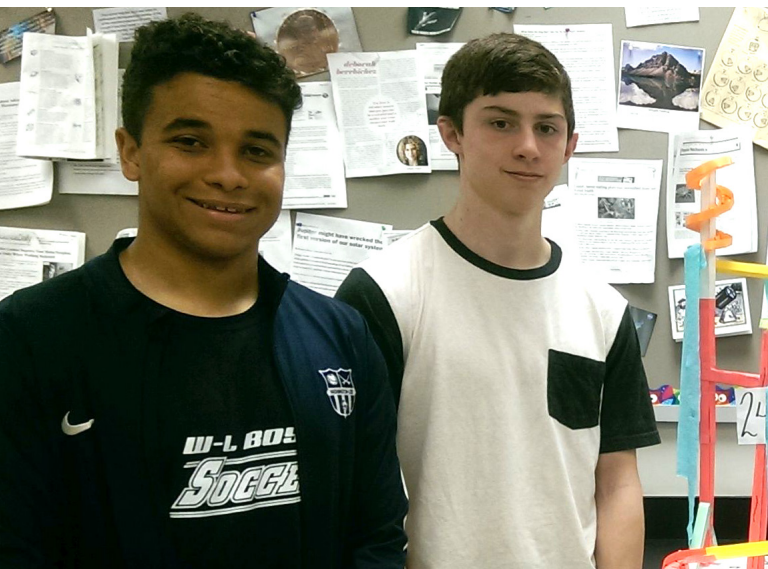




Arlington
Public
Schools

Annual APS Enrollment Projections Report

DECEMBER 2016



Arlington Public Schools
1426 N. Quincy Street
Arlington, VA 22207



Table of Contents

Executive Summary.....	1
Introduction.....	3
Historical Enrollment at APS.....	4
Current Enrollment at APS.....	5
Projected Enrollment at APS.....	7
Standard Methodology.....	8
Birth Data.....	10
New Housing.....	13
Migration.....	13
Accuracy of Projections.....	14
Alternative Projection Scenarios.....	16

List of Tables

2017 Enrollment.....	19
2018 Enrollment.....	20
2019 Enrollment.....	21
2020 Enrollment.....	22
2021 Enrollment.....	23
2022 Enrollment.....	24
2023 Enrollment.....	25
2024 Enrollment.....	26
2025 Enrollment.....	27
2026 Enrollment.....	28
Actual Versus Projection, Prior Year Comparison.....	29
Percentage of Individual Schools Within 95% Accuracy.....	30



Executive Summary

The Arlington Public Schools (APS) Annual Enrollment Report provides a comprehensive look at the Fall ten-year student enrollment projections. The intent of this document is to provide APS staff with data from which it may make informed decisions around budgeting, facilities, and programs. Specific information about each school is provided, as well as an overall look at enrollment by school level and system wide.

Projections of student enrollment are produced twice a year. Fall projections for the upcoming ten school years are published every November, based on the number of enrolled students on September 30th each year (i.e., official count day). The Fall projection is used to create the Superintendent's Budget for the next fiscal year. Spring updates to the Fall projections are then produced every February and use the January 31st enrollment count to fine-tune the Fall projections. It is from the

Spring projections that staffing decisions for the next fiscal year are made. The Fall enrollment projections inform long-term facilities planning decisions, such as the need to relocate programs, perform school boundary refinements, deploy temporary relocatable classrooms, construct permanent classroom additions to existing schools, and re-construct or build new schools.

The "official count" of enrollment on September 30, 2016 was 26,152 students. This school year represents the tenth consecutive school year of student enrollment growth at APS. Since Fall 2006 (18,451 students), APS enrollment has increased by 7,701 students, which equates to 42% growth over the past decade.

The projected enrollment for school year 2017-18 is 27,197 students, which is a gain of 1,045 students over the 2016-17 school year and represents a robust one-year increase of 4.0 percent. Provided below are the fall ten-year projections for school years 2017-18 through 2026-27. The ten-year projections show positive growth that gradually wanes over the projection horizon.

APS is projected to surpass the 30,000 student milestone in Fall 2021. Overall, the projections suggest significant growth of nearly 6,400 students from now through school year 2026-27.



Projected Annual Enrollment Change

School Year	Actual & Projected PreK-12 Enrollment	Projected Growth %
2016-17	26,152	--
2017-18	27,197	4.0%
2018-19	27,879	2.5%
2019-20	28,708	3.0%
2020-21	29,435	2.5%
2021-22	30,139	2.4%
2022-23	30,799	2.2%
2023-24	31,274	1.5%
2024-25	31,848	1.8%
2025-26	32,184	1.1%
2026-27	32,493	1.0%

Introduction

This is the second formal Annual Enrollment Projection Report for Arlington Public Schools (APS). The report provides detailed information on the number of students projected to be enrolled by grade for each school at APS on September 30th of the school year for the ten-year period beginning in 2017-18 and ending in 2026-27. To estimate future enrollment, APS uses three sets of statistics, which include the number of resident live births for Arlington County (for kindergarten projections only), the three-year history of enrollment change (i.e., cohort transition rate), and the anticipated student yield from “future” housing units. Enrollment projections are a valuable planning tool to help predict the need for new or expanded schools and determine how many teachers are needed each year in each school and grade. Enrollment projections are also used for facility planning purposes to estimate the expected number of students in each school.

Methodology Used for APS Enrollment Projections

Cohort Transition Ratio. Most districts across the United States use the cohort transition ratio method to project enrollment. This method captures the enrollment patterns of a cohort of students as they transition from grade to grade. It is calculated by dividing the number of students in a particular cohort (i.e., grade) by the number of students from the previous cohort in the previous school year. A cohort transition ratio greater than one means there are more students entering school than enrolled in the previous grade. A cohort transition ratio less than one means there are less students returning to school than in

the previous grade. Because grade-specific transition ratios may vary considerably from one year to the next, APS uses a three-year rolling average in its projection methodology. The most recent three-year cohort transition ratio is applied to current and future school enrollments to produce the ten-year projections by grade for each school.



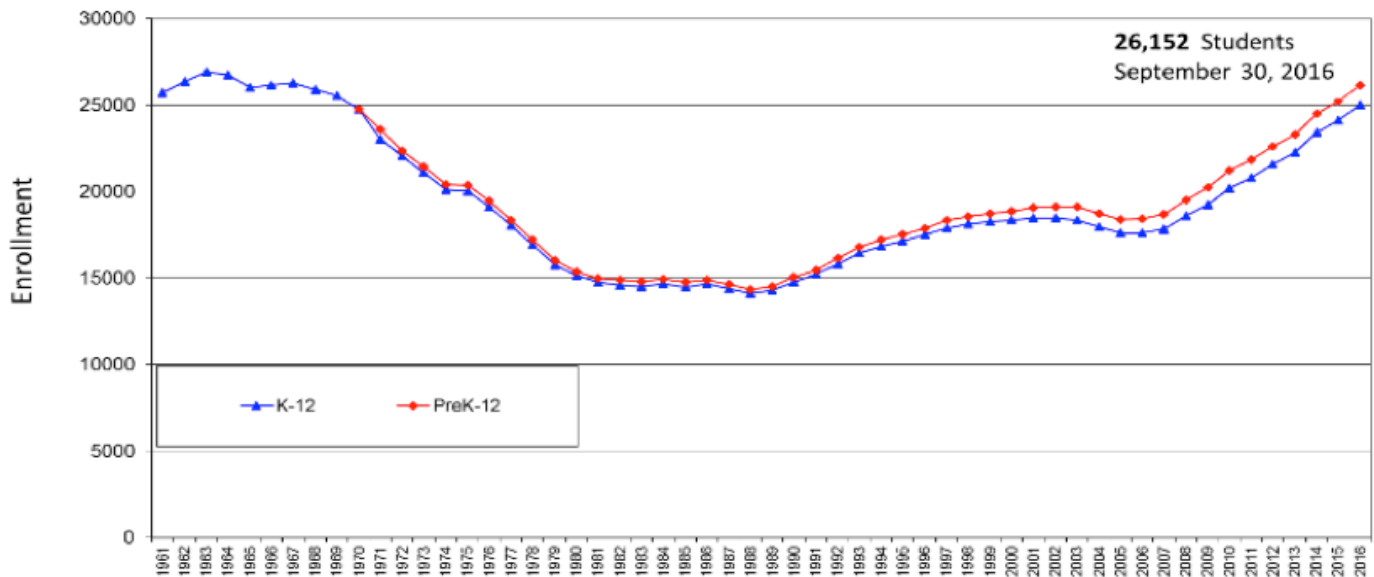
Historical Enrollment at APS

Enrollment projections typically use the most recent three to five years of historic data to predict future enrollment. While the most recent past is viewed as the best predictor of

the near future, it is also important to analyze from a historical perspective. The chart below shows APS enrollment from 1961 to date.

Historical Annual Enrollment Change

Total K-12 and PreK-12 Enrollment (September 30th), 1961-2016



The chart titled “Historical Annual Enrollment Change” reveals stable enrollment above the 25,000-student mark throughout the 1960s (excluding Pre-K students) followed by a significant decline in student enrollment in the 1970s and flat enrollment in the 1980s.

Enrollment climbed modestly in the 1990s, leveled out in the early to mid-2000s, and has risen at an unprecedented rate since 2007. For the first time since 1969, APS has reached the 26,000 student milestone.

Recent Historical Annual Enrollment Change

Year	PreK-12 Enrollment	% Change over Previous Year
September 2016	26,152	+3.6%
September 2015	25,238	+2.9%
September 2014	24,529	+5.2%
September 2013	23,316	+3.1%
September 2012	22,613	+3.5%
September 2011	21,841	+2.8%
September 2010	21,241	+5.0%
September 2009	20,233	+3.6%
September 2008	19,534	+4.5%
September 2007	18,684	+1.3%
September 2006	18,451	+0.2%
September 2005	18,411	-1.8%
September 2004	18,744	-2.0%
September 2003	19,120	-0.1%
September 2002	19,140	+0.2%
September 2001	19,097	+1.1%

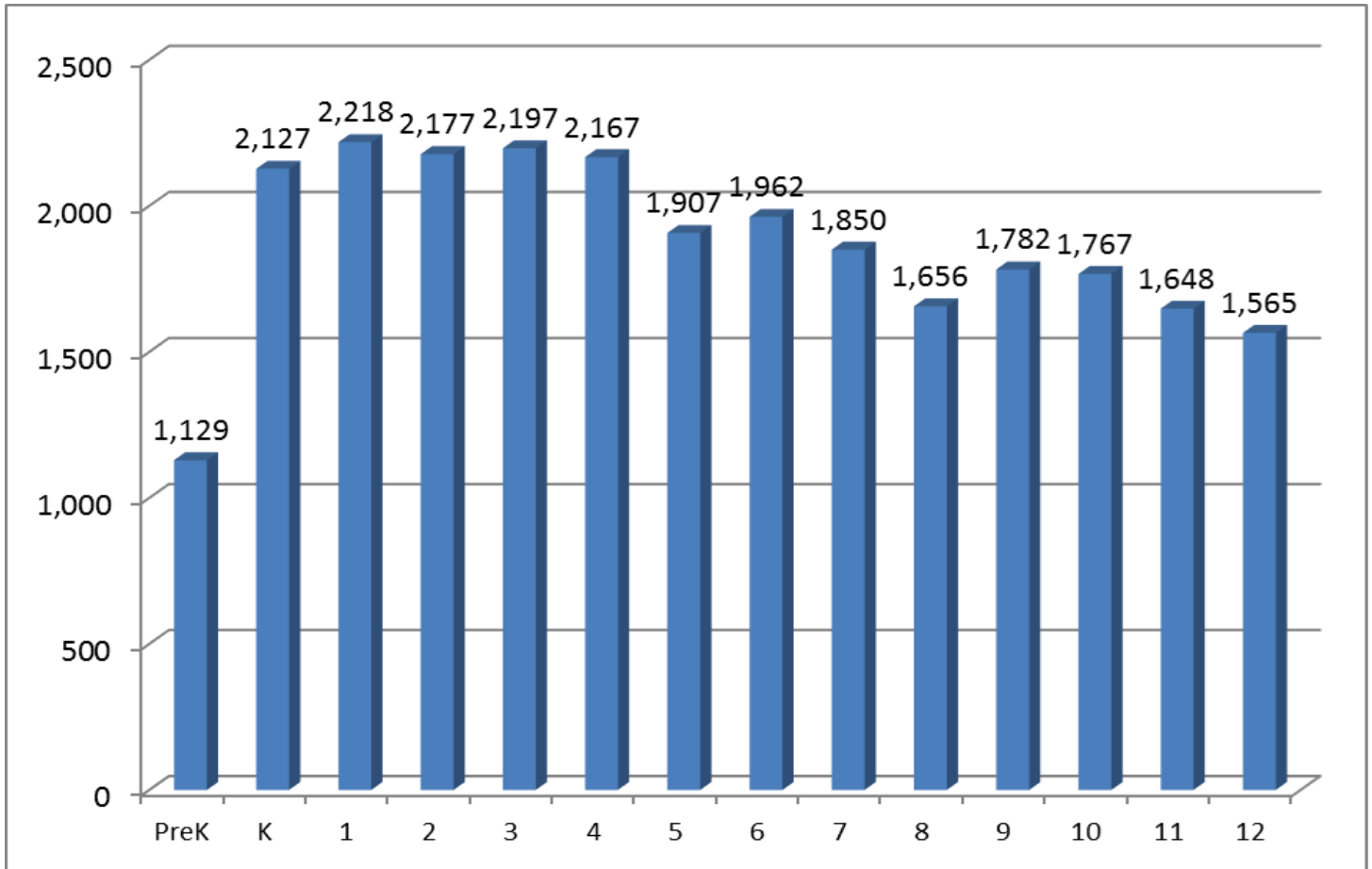
The chart reveals the unprecedented high growth pattern APS has experienced since 2008. To provide a frame of reference, annual growth of 2 percent or more indicates a high growth rate. Annual growth of 1-2 percent indicates a medium growth and 0-1 percent indicates a low growth rate.

Current Enrollment at APS

On September 30, 2016 total PreK-12 enrollment was 26,152 students. This total includes students from preschool age to those students enrolled in the high school continuation programs. The chart on the next page shows the September 30, 2016, grade-by-grade enrollment of students at APS. The number of students in the Pre-K cohort is fixed due to seat availability at approximately 1,282 seats.

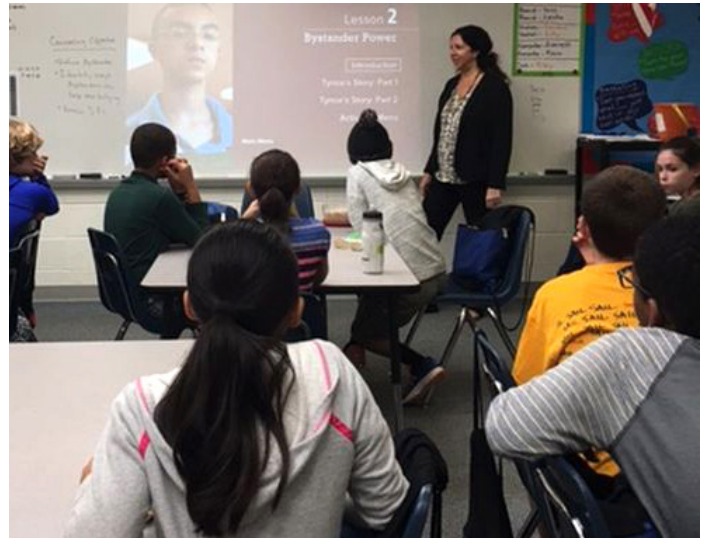
For the past four years the entering kindergarten cohort averaged 2,000+ students, while the exiting 12th grade cohort averaged approximately 1,500 students. This fact suggests natural growth will occur as long as smaller 12th grade cohorts leaving the system are being replaced by larger kindergarten cohorts (projected for 2,100+ students) entering the system each year from now through 2026.

Current PreK-12 Enrollment by Grade (School Year 2016-17)



Projected Enrollment at APS

APS ten-year projections for PreK-12 enrollment for School Years 2016-17 through 2025-26 show a continued increase in enrollment at all school levels.



Projected Enrollment Change Over Next Ten Years

School Year	PreK	Elementary	Middle	High ²	K-12 Total	PreK-12 Total
2006-07*	838	8,505	3,789	5,319	17,613	18,451
2016-17*	1,129	12,793	5,468	6,762	25,023	26,152
2017-18	1,282	13,083	5,751	7,081	25,915	27,197
2018-19	1,282	13,088	6,035	7,474	26,597	27,879
2019-20	1,282	13,170	6,257	7,999	27,426	28,708
2020-21	1,282	13,288	6,521	8,344	28,153	29,435
2021-22	1,282	13,391	6,583	8,883	28,857	30,139
2022-23	1,282	13,672	6,613	9,232	29,517	30,799
2023-24	1,282	13,810	6,714	9,468	29,992	31,274
2024-25	1,282	13,948	6,769	9,849	30,566	31,848
2025-26	1,282	14,109	6,897	9,896	30,902	32,184
2026-27	1,282	14,258	6,965	9,988	31,211	32,493

* Enrollment is projected to reach a record high of more than 27,000 students in School Year 2017-18, and to continue to climb to over 30,000 students in School Year 2021-22 and to over 32,000 students in School Year 2025-26.

1. http://www.apsva.us/wp-content/uploads/2016/12/FallProjections17-26_Final_Web.pdf

2. Includes Stratford Program for School Years 2016 through 2025.

Standard Methodology

Input Data

School enrollment projections take into account the following factors:

September 30th Official Count	Historic September 30th data (official count) is used to compute three-year average cohort progression ratio.
Cohort Progression Ratio	The likelihood of a student advancing from one grade to the next based on three-year cohort progression averaging.
Resident Live Births	Historic “resident” birth rates in Arlington County, five years prior, are used to project future incoming kindergarten cohorts.
Projected Housing Growth	Future residential units to be built. Development projects approved by Arlington County.
Student Generation Factors	Multiplier used to predict the number of students from future residential developments.

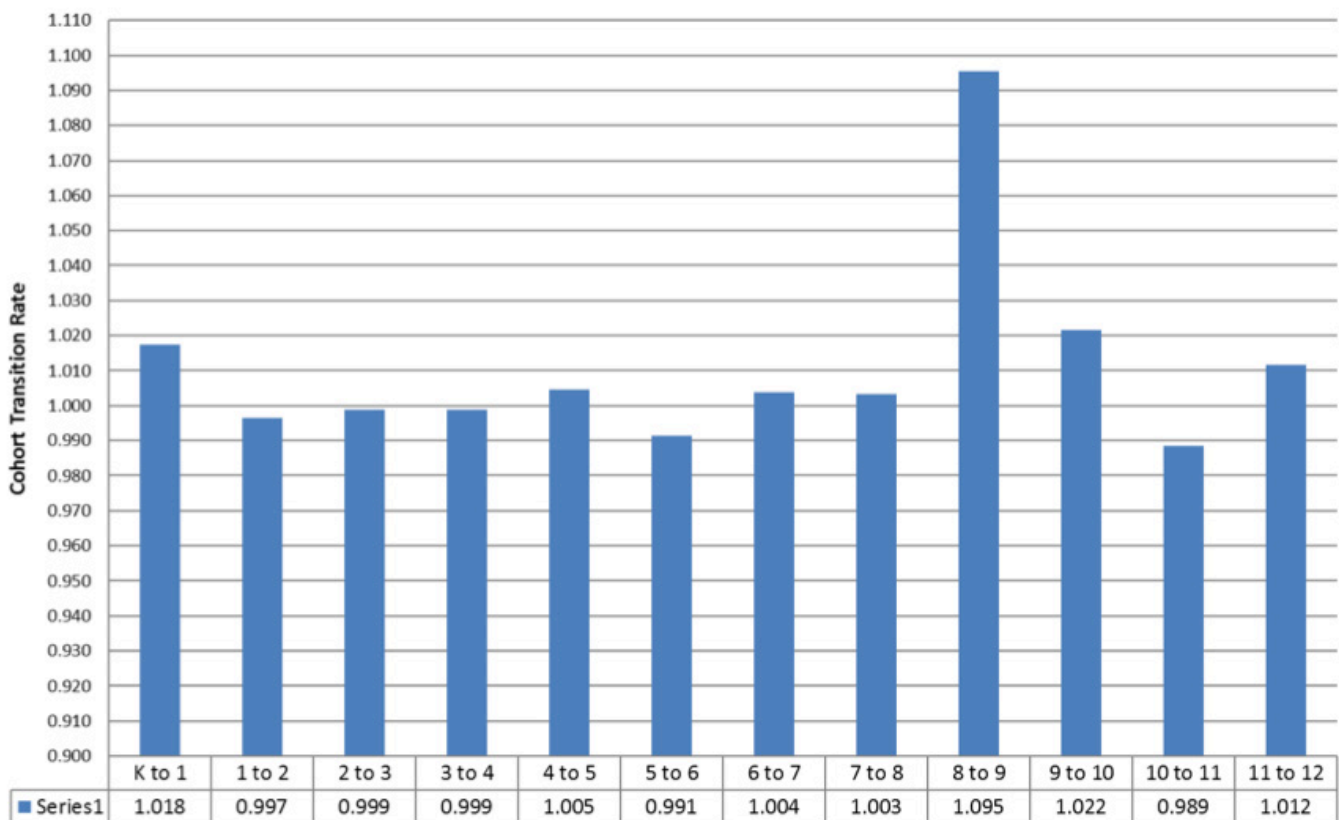
- 1. September 30th Official Count.** Historical September 30th enrollment counts, by grade for each school, are used to develop the cohort progression ratios that predict future enrollment. The data comes from the APS Monthly Membership Report for the month of September provided by the Office of Planning and Evaluation.
- 2. Cohort Transition Ratio.** This data shows the likelihood of a student advancing from one grade to the next based on the three-year cohort transition average. An example of the calculation is provided on the next page.

	September 30th Membership		Cohort Progression Rate Grade 2-3	
	Grade 2	Grade 3	One-Year Average	Three-Year Average
2011	99	105	--	--
2012	101	98	0.989	--
2013	102	104	1.029	--
2014	93	99	0.970	0.996

The current three-year average of the cohort transition rate by grade is provided below to give a snapshot of the current trend. Values greater than one indicate the percent cohort growth as students

transition from one grade to the next. Values less than one indicate the percent cohort loss as students transition to the next grade.

Three-Year Cohort Transition Ratio By Grade SY 2013-14 Through SY 2016-17

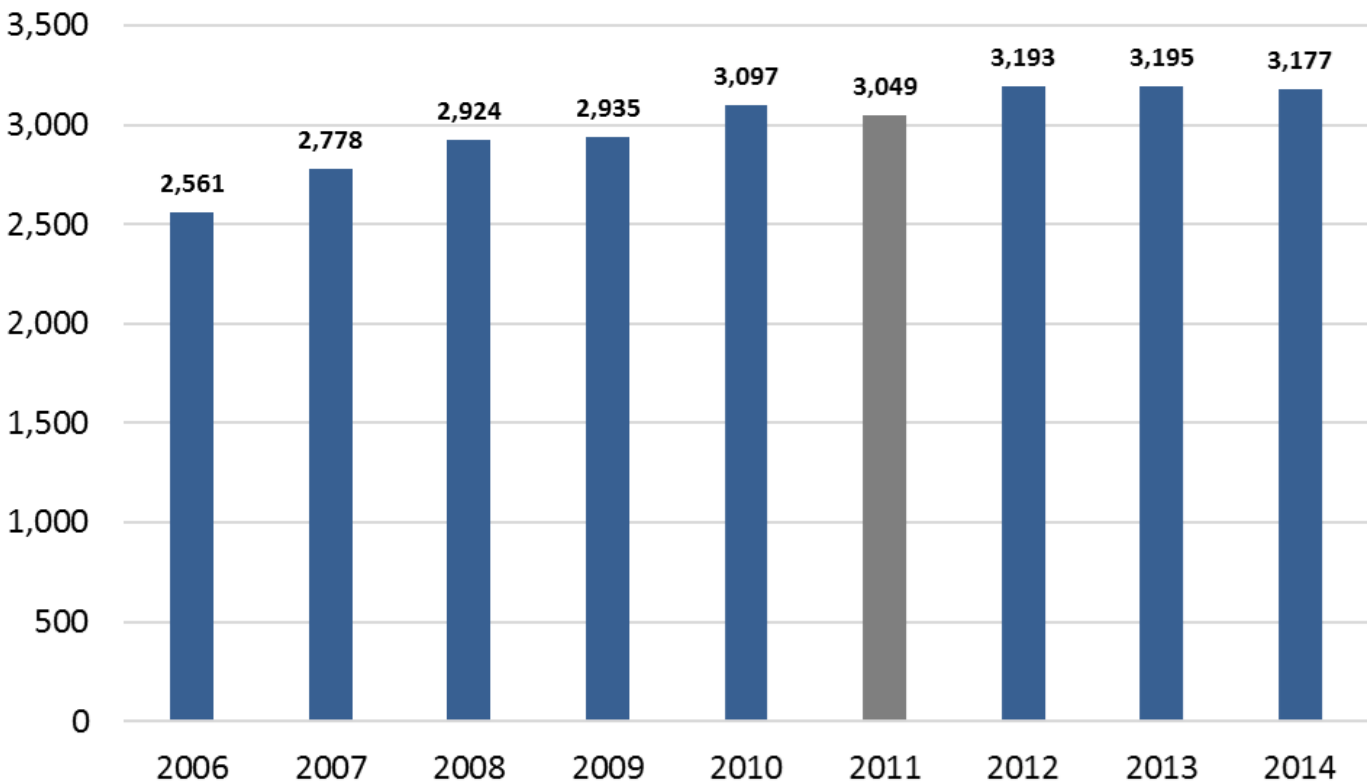


The latest three-year trend data clearly show that APS receives the highest cohort transition growth (9.5 percent) as students transition from eighth to ninth grade. This is likely due to families choosing to transfer their children from non-APS schools to take advantage of the broad range of course offerings at APS high schools. Conversely, the greatest decline in the cohort transition rate (-1.1 percent) happens as students transition from tenth to eleventh grade. Do not be alarmed by this statistic because it suggests nearly 99% of tenth graders remain at APS for the 11th grade.

3. Resident Live Births. Arlington County resident “live” birth data is obtained from the Virginia Center for Health Statistics. Resident live births are used to anticipate future kindergarten cohorts. APS compares kindergarten enrollment to birth data from five years earlier to project the size of future kindergarten cohorts. As the graph below shows, Arlington’s resident live births have risen from about 2,500+ births in 2006 to approximately 3,100 births on average each year between 2010 and 2014. APS staff refers to these cohorts as “the wave” because these larger cohorts are expected to crowd schools as they advance

Birth Data

Arlington County Resident Live Births for Calendar Years 2006-2014



* Gray bar denotes birth cohort of current kindergarten students in School Year 2016-17.

through elementary, middle and high school levels. The chart below shows the kindergarten capture rate, or how resident live births compare to the kindergarten cohorts enrolled at APS five years later. From 2005 through 2009 the Birth to Kindergarten capture rate increased by 20 percentage points, which indicates that significantly more families with children born in Arlington are staying in Arlington and/or more families with children born

elsewhere are moving to Arlington and enrolling their children in kindergarten at APS. However, last school year (2015-16) the capture rate dropped significantly, by 6 percentage points, which defies the previous trend. This school year the capture rate was 70%. Planning staff will watch next year's capture rate very closely to determine if a potential new trend (70% +/-) is being established.

Kindergarten Capture Rate 2000-2011

Birth Year	Kindergarten School Year	Resident Live Births	Kindergarten Cohort	Birth to KG Ratio
2000	2005	2,715	1,501	55%
2001	2006	2,814	1,627	58%
2002	2007	2,686	1,610	60%
2003	2008	2,659	1,697	64%
2004	2009	2,810	1,924	68%
2005	2010	2,809	2,003	71%
2006	2011	2,561	1,968	77%
2007	2012	2,778	2,179	78%
2008	2013	2,924	2,139	73%
2009	2014	2,935	2,196	75%
2010	2015	3,097	2,152	69%
2011	2016	3,049	2,127	70%

4. Projected Housing Growth. This data set is used to bolster the accuracy of long-term projections by accounting for known “future” residential development projects by school attendance area. Future housing unit data is provided to APS by the Arlington County Department of Community Planning, Housing and Development. As of June 30, 2016, there were 8,787 future residential units in the housing pipeline approved by the County but not yet under construction.

5. Student Generation Factor. The Student Generation Factor predicts student yield from “new” housing. It is the mathematical representation of the relationship between the number of existing housing units in Arlington County and the number of students enrolled at APS on September 30th for a given year. This derives from housing data provided by Arlington County and student data from the APS September 30th official enrollment count. More details about this data are provided on the next page.

Student Generation Factor by Housing Unit Type School Year 2016-17

All Grade Levels (K-12)					
Housing Type	APS K-12 Students	% of Students by Housing Type	Housing Units County-wide	% of County Housing Type	Student Generation Factor
Single Family Detached	13,222	53.23%	27,627	24.77%	0.479
Apartment - Garden	5,146	20.72%	15,219	13.64%	0.338
Apartment - Elevator	2,956	11.90%	35,701	32.00%	0.083
Duplex	902	3.63%	2,504	2.24%	0.360
Condo - Garden	1,231	4.96%	13,174	11.81%	0.093
Condo - Elevator	654	2.63%	13,602	12.19%	0.048
Townhouse	729	2.93%	3,722	3.34%	0.196
Total	24,840	100.00%	111,549	100.00%	0.223

Notes:

1. One hundred and eighty-eight (188) students could not be geocoded because they are either (i) non-resident employee children that live outside of Arlington County, or (ii) reside in Fort Myer (federal jurisdiction), which is not in Arlington County.
2. The Pre-K cohort (1,129 students) is not included in the student generation factor calculation. Pre-K enrollment is based upon funding and seat availability.



New Housing

Student Yield from Future Housing

The anticipated student yield from “future” housing units is included in the projections by the impacted neighborhood elementary, middle, and high schools. Projected students from “known” residential developments that have been approved by Arlington County were calculated using the appropriate student generation factor for the housing unit types to be provided in the development.

Student yields from residential developments are phased into the projections as follows:

- Recently completed residential housing units (from October 1, 2015 through September 30, 2016) were phased equally in Year 1 (SY 2017-18) and Year 2 (SY 2018-19) of the projections;
- Residential development projects currently under construction were phased equally in Year 3 (SY 2019-20), Year 4 (SY 2020-21) and Year 5 (SY 2021-22); and
- Residential development projects that are “Approved by the County but not yet under construction” were phased equally in Years 6 (SY 2022-23) through 10 (SY 2026-27).

Migration

The table titled “Estimated Net Migration in Arlington County” was developed from 2015 US Census Bureau data. This table shows estimated net domestic migration and net international migration data from 2010 through 2015. It is apparent that Arlington County continues to have positive net international migration. Net international migration is the difference between the number of people moving into Arlington County from other countries and the number of people leaving Arlington to reside in other

countries. Positive net international migration indicates that more people are entering from other countries than leaving Arlington to reside abroad. While net international migration in Arlington continues to be positive, the magnitude was significantly smaller in 2010 as compared to 2011 through 2015.

Net domestic migration is the difference between the number of people moving into Arlington from other parts of the United States and the number of people leaving Arlington to reside in other United States locations. Negative net domestic migration indicates that more people are moving out of Arlington to other parts of the United States than are coming into Arlington from other parts of the country. From 2010 through 2012 Arlington experienced positive net domestic migration. In 2013, Arlington shifted to negative domestic migration, and the magnitude was significantly less in 2015 (-3,901) than 2014 (-1,929).

While Arlington received a net of more than 2,549 people from other countries in 2015, a net of approximately 1,929 people left Arlington for other locations in the United States. When the data from net international migration and net domestic migration are added together, the resulting value is total net migration. In 2015, Arlington experienced a positive total net migration, with a gain of more than 620 persons. APS planning staff will continue to monitor changes in migration estimates and how those changes may be associated with increasing enrollment.

Estimated Net Migration in Arlington County 2010-2015

Year	Net International Migration	Net Domestic Migration	Total Net Migration
2010	553	567	1,120
2011	2,133	2,797	4,930
2012	2,321	774	3,095
2013	2,396	-392	2,004
2014	2,381	-3,901	-1,520
2015	2,549	-1,929	620

Data Source: 2015 US Census Bureau. PEPTCOMP - Estimates of the Components of Resident Population Change: April 1, 2010 to July 1, 2015

Accuracy of Projections

Individual school and grade level projections are subject to more variation than overall school system numbers. Enrollment estimates are more accurate projecting one year ahead than those projecting five years ahead. The “Review of Projection Methodologies for the Arlington County Government and Arlington Public Schools” prepared by Statistical Forecasting LLC and RLS Demographics suggests that for a fast-growing district such as APS, with many variables that contribute to changing enrollment, +/- 2 percent error rate is acceptable. Using this criterion, for a system with 10,000 students, an error rate of +/- 200 students would be acceptable in Year 1, +/- 400 students would be acceptable in Year 2, +/- 1,000 students would be acceptable in Year 5 and +/- 2,000 students would be acceptable in Year 10.

The actual enrollment on September 30, 2016 was 26,152 students. One year prior, the

projection for School Year 2016-17 was 26,414 students, a difference of -262 students or 0.82 percent, which is within the standard +/- 2 percent error range. Since School Year 2008-09, the one-year enrollment projections for Arlington Public Schools have varied from the actual enrollment by an average of 1.37 percent (see chart on next page).

In School Year 2011-12, the projection for the 2016-17 School Year was 26,069 students. Actual enrollment five years later on September 30, 2016, was 26,152; a difference of 83 students or 0.32% from the projection and well within the accepted standard of 10 percent for a five-year forecast. This fact suggests that the mid-range projection from five years prior was reasonably accurate. Since School Year 2008-09, five-year enrollment projections for Arlington Public Schools have varied from the actual enrollment by an average of about 9 percent (see chart below), which meets the acceptable standard of 10 percent for a five-year forecast.

Longitudinal Analysis of Projection Accuracy

School Year	Official Count on 9/30	Historical Enrollment Projections											
		One Year Before (Fall Projections)		Two Years Before (Fall Projections)		Four Years Before (Fall Projections)		Five Years Before (Fall Projections)					
		Projection	Accuracy %	Error %	Projection	Accuracy %	Error %	Projection	Accuracy %	Error %	Projection	Accuracy %	Error %
2005-06	18,411	18,237	99.05%	-0.95%	18,817	102.21%	2.21%	DNA	DNA	DNA	DNA	DNA	DNA
2006-07	18,451	18,231	98.81%	-1.19%	17,897	97.00%	-3.00%	DNA	DNA	DNA	DNA	DNA	DNA
2007-08	18,684	18,380	98.37%	-1.63%	17,906	95.84%	-4.16%	18,479	98.90%	-1.10%	DNA	DNA	DNA
2008-09	19,534	18,868	96.59%	-3.41%	18,268	93.52%	-6.48%	17,259	88.35%	-11.65%	18,326	93.82%	-6.18%
2009-10	20,233	20,084	99.26%	-0.74%	19,029	94.05%	-5.95%	17,301	85.51%	-14.49%	16,945	83.75%	-16.25%
2010-11	21,241	20,933	98.55%	-1.45%	20,650	97.22%	-2.78%	18,324	86.27%	-13.73%	17,002	80.04%	-19.96%
2011-12	21,841	22,201	101.65%	1.65%	21,657	99.16%	-0.84%	19,318	88.45%	-11.55%	18,358	84.05%	-15.95%
2012-13	22,613	22,681	100.30%	0.30%	23,051	101.94%	1.94%	21,859	96.67%	-3.33%	19,464	86.07%	-13.93%
2013-14	23,316	23,586	101.16%	1.16%	23,591	101.18%	1.18%	23,074	98.96%	-1.04%	22,485	96.44%	-3.56%
2014-15	24,529	24,153	98.47%	-1.53%	24,402	99.48%	-0.52%	25,006	101.94%	1.94%	23,838	97.18%	-2.82%
2015-16	25,238	25,649	101.63%	1.63%	24,946	98.84%	-1.16%	25,213	99.90%	-0.10%	25,867	102.49%	2.49%
2016-17	26,152	26,366	100.82%	0.82%	26,568	101.59%	1.59%	26,143	99.97%	-0.03%	26,069	99.68%	-0.32%
Mean Absolute Percentage Error		1.37%		2.65%		5.90%		9.05%					

NOTE:

1. "DNA" = Projection data not available.
2. Accuracy above 100 percent indicates the projection is over-forecast, conversely an accuracy less than 100 percent indicates an under-forecast of the September 30th official count.
3. A positive (+) error percentage indicates an over-forecast, conversely a negative (-) error percentage indicates an under-forecast of the September 30th official count.
4. A +/- 2 percent annual range of error is an accepted standard for fast growing school districts like Arlington Public Schools.

Alternative Projection Scenarios

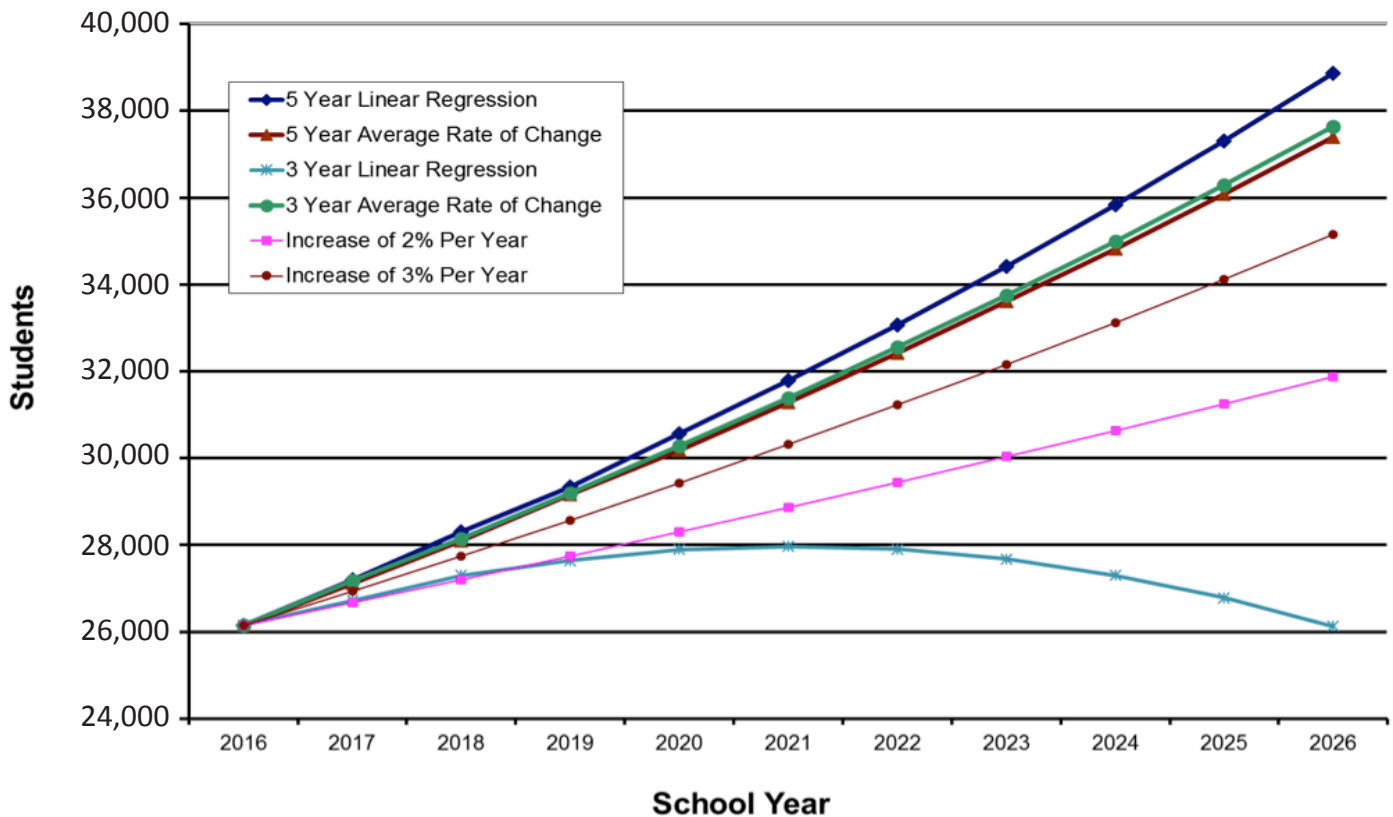
Enrollment projections of the number of future students almost always differ from the actual number of students enrolled for a given point in time due to changes in social, economic, housing, and demographic trends, as well as the many inherent assumptions in the model. Therefore, six alternative projections are provided in the graph below to denote the uncertainty involved in making projections.

The alternative projection scenarios include:

- Five-Year Linear Regression
- Three-Year Linear Regression
- Five-Year Average Rate of Change
- Three-Year Average Rate of Change
- Increase of 2 Percent Per Year
- Increase of 3 Percent Per Year

These alternatives are not statistical confidence limits, but instead represent judgments made by Planning Staff as to reasonable upper and lower bounds.

Alternative Projection Scenarios Fall 2016-2026

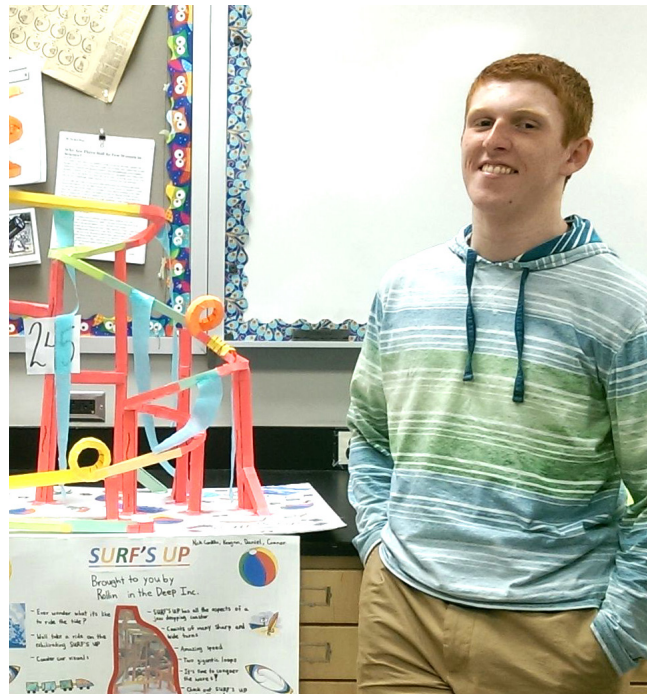


PreK-12 Enrollment Forecasts

Five-Year Linear Regression Forecast			
School Year	Sept. 30	Percent Change	Net
2016	26,152	1.041	914
2017	27,199	1.040	1047
2018	28,298	1.040	1099
2019	29,338	1.037	1040
2020	30,571	1.042	1232
2021	31,789	1.040	1218
2022	33,067	1.040	1278
2023	34,411	1.041	1344
2024	35,845	1.042	1434
2025	37,311	1.041	1466
2026	38,868	1.042	1557

Three-Year Linear Regression Forecast			
School Year	Sept. 30	Percent Change	Net
2016	26,152	1.035	914
2017	26,723	1.022	571
2018	27,299	1.022	576
2019	27,642	1.013	343
2020	27,902	1.009	260
2021	27,967	1.002	66
2022	27,908	0.998	-59
2023	27,676	0.992	-232
2024	27,307	0.987	-369
2025	26,784	0.981	-523
2026	26,130	0.976	-655

Five-Year Average Rate of Change			
School Year	Sept. 30	Percent Change	Net
2016	26,152	1.035	914
2017	27,106	1.036	954
2018	28,102	1.037	996
2019	29,166	1.038	1064
2020	30,187	1.035	1021
2021	31,281	1.036	1094
2022	32,422	1.036	1141
2023	33,604	1.036	1182
2024	34,828	1.036	1224
2025	36,086	1.036	1258
2026	37,397	1.036	1311



Three-Year Average Rate of Change

School Year	Sept. 30	Percent Change	Net
2016	26,152	1.037	914
2017	27,183	1.039	1031
2018	28,140	1.035	957
2019	29,191	1.037	1050
2020	30,280	1.037	1090
2021	31,389	1.037	1109
2022	32,554	1.037	1164
2023	33,759	1.037	1205
2024	35,005	1.037	1246
2025	36,300	1.037	1295
2026	37,642	1.037	1342



Static 2 Percent Increase Per Year

School Year	Sept. 30	Percent Change	Net
2016	26,152	1.020	914
2017	26,675	1.020	523
2018	27,209	1.020	534
2019	27,753	1.020	544
2020	28,308	1.020	555
2021	28,874	1.020	566
2022	29,451	1.020	577
2023	30,040	1.020	589
2024	30,641	1.020	601
2025	31,254	1.020	613
2026	31,879	1.020	625

Static 3 Percent Increase Per Year

School Year	Sept. 30	Percent Change	Net
2016	26,152	1.030	914
2017	26,937	1.030	785
2018	27,745	1.030	808
2019	28,577	1.030	832
2020	29,434	1.030	857
2021	30,317	1.030	883
2022	31,227	1.030	910
2023	32,164	1.030	937
2024	33,129	1.030	965
2025	34,122	1.030	994
2026	35,146	1.030	1024

2019 Fall Enrollment Projections

ARLINGTON PUBLIC SCHOOLS
Facilities Planning
BASELINE PROJECTIONS -- NOT ADJUSTED FOR HIGH SCHOOL BOUNDARY REFINEMENTS
FALL 2019 ENROLLMENT PROJECTIONS
12/12/2016

SCHOOL	K-5							Preschool						TOTAL									
	K	1	2	3	4	5	K-5	VPI	PreK SPED	3&4 Mont	Dual Enrl	Peer Pals	PreK Total										
Abingdon	102	100	98	100	98	93	591	32	8	0	11	0	51								642		
Arlington Science Focus	97	108	107	88	126	118	644	16	0	0	1	0	17								661		
Arlington Traditional	96	96	96	96	72	72	528	32	6	0	0	0	38								566		
Ashlawn	95	106	107	85	136	150	679	16	16	0	4	0	36								715		
Barcroft	67	67	63	56	58	69	380	32	8	0	2	0	42								422		
Barrett	86	85	83	83	87	81	505	32	8	17	0	0	57								562		
Campbell	70	63	63	64	63	56	379	48	8	17	2	0	75								454		
Carlin Springs	82	81	79	78	97	79	496	64	16	17	6	0	103								599		
Claremont	136	124	121	123	88	113	705	32	0	0	0	0	32								737		
Discovery	90	90	94	94	90	78	536	0	8	17	3	1	29								565		
Drew	89	91	84	78	87	95	524	32	24	119	2	0	177								701		
Glebe	100	94	91	96	93	88	562	0	8	0	10	4	22								584		
Henry	121	118	124	117	108	99	687	32	12	0	6	0	50								737		
Hoffman-Boston	64	63	61	57	58	59	362	80	34	68	3	0	185								547		
Jamestown	88	88	91	93	82	104	546	0	16	51	2	2	71								617		
Key	134	134	134	132	115	120	769	32	8	0	9	0	49								818		
Long Branch	91	97	97	92	114	97	588	16	6	0	4	1	27								615		
McKinley	110	105	105	120	127	125	692	0	0	17	5	0	22								714		
Nottingham	81	86	94	93	93	75	522	0	0	0	1	0	1								523		
Oakridge	128	130	132	140	122	132	784	16	8	0	8	0	32								816		
Randolph	69	72	75	62	81	71	430	48	16	0	5	0	69								499		
Taylor	110	115	118	104	122	112	681	0	8	0	8	0	16								697		
Tuckahoe	100	105	106	87	102	80	580	0	8	0	6	4	18								598		
Integration Station (Reed)								0	62	0	1	0	63								63		
ELEMENTARY TOTAL	2,206	2,218	2,223	2,138	2,219	2,166	13,170	560	288	323	99	12	1,282	6	7	8	MID				14,452		
Gunston														428	434	374	1,236				1,236		
Jefferson														394	396	343	1,133				1,133		
Kenmore														352	316	340	1,008				1,008		
Stratford Program														10	6	6	22				22		
Swanson														416	457	352	1,225				1,225		
Williamsburg														496	465	423	1,384				1,384		
H-B Woodlawn														83	83	83	249				249		
MIDDLE TOTAL														2,179	2,157	1,921	6,257	9	10	11	12	HIGH	6,257
Arlington Community														24	44	56	110	234	234			234	
Arlington Tech														200	100	100	40	440	440			440	
Langston														1	4	18	49	72	72			72	
Stratford Program														9	6	6	12	33	33			33	
Wakefield														555	535	464	496	2,050	2,050			2,050	
Washington-Lee														701	738	602	582	2,623	2,623			2,623	
Yorktown														556	520	516	515	2,107	2,107			2,107	
H-B Woodlawn														110	110	110	110	440	440			440	
HIGH TOTAL														2,156	2,057	1,872	1,914	7,999	7,999			7,999	
TOTAL	2,206	2,218	2,223	2,138	2,219	2,166	13,170	560	288	323	99	12	1,282	2,179	2,157	1,921	6,257	2,156	2,057	1,872	1,914	7,999	7,999
K-12 TOTAL	27,426																						
Career Center - FTE's	459																						
Reed (community services)	36																				PreK-12 Total	28,708	

Five-year-old Montessori students are reported in Kindergarten. Career Center FTE are not included in the total as the students are already counted in their home school.
All Special Education students, including those in self-contained classes, all ESOL/HILT/HILTEX students, and all Transition Program students are included within the grade totals at each school.
Langston and Arlington Community membership does not include students over 20 years old. The above projections do not include the adult students at Arlington Community and at Langston.
APS provides specialized services (i.e., Speech) to "dual-enrolled" students on a limited basis and invites PreK students to serve as "peer models" in PreK classrooms that are under-enrolled. Although both dual-enrolled and peer model students are counted towards total enrollment, they are not counted toward capacity utilization since they are in attendance in school only intermittently. The Fall 2017 projections are subject to program relocation decisions which will be reflected in the Spring update produced in February 2018.

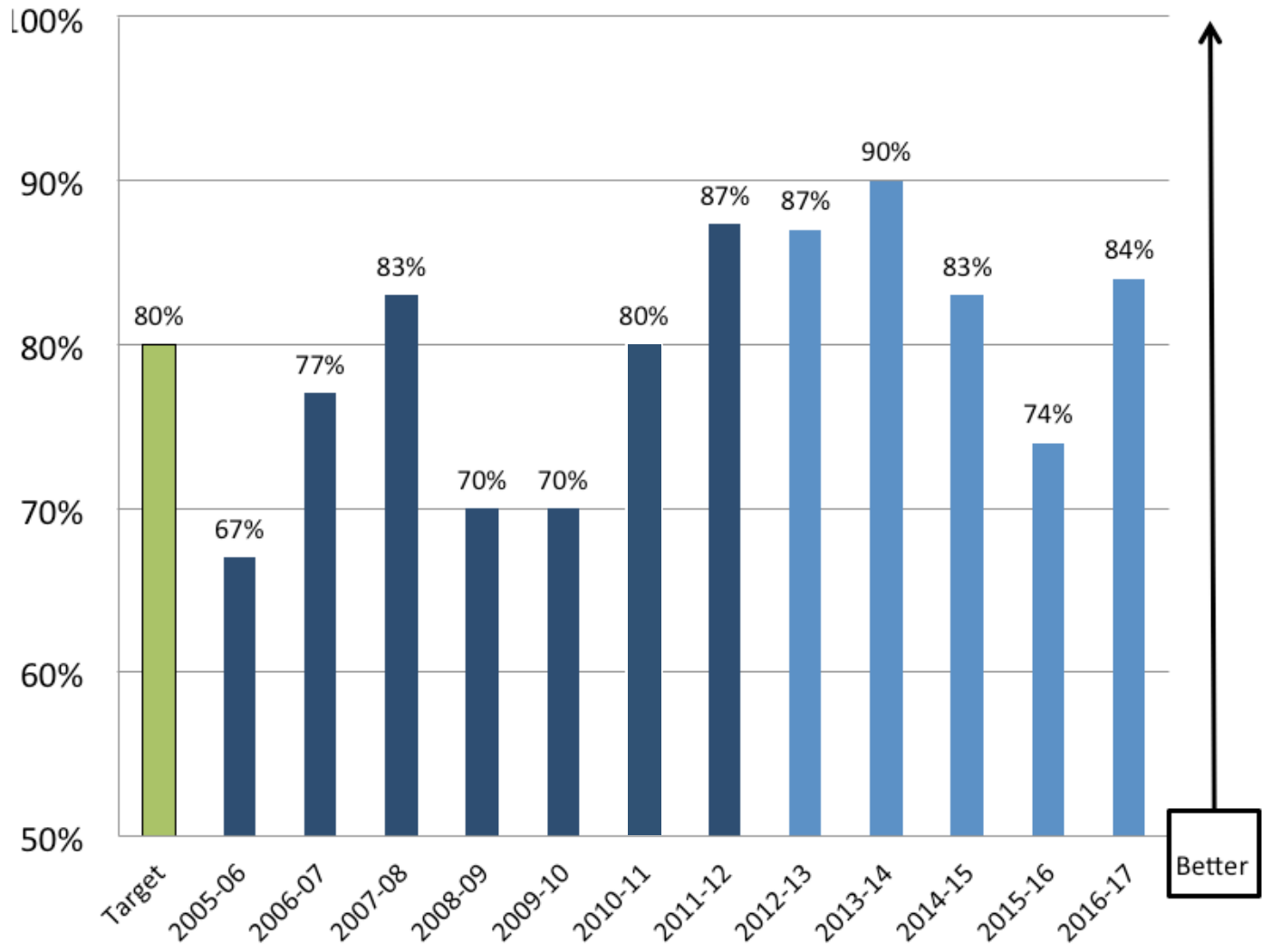
Actual Versus Projection, Prior Year Comparison

School	2016 Projected Enrollment (Spring Update)	2016			2015		Percent Change 2015 to 2016
		Sep. 30, 2016 Membership	Difference from Projection	% of Projection	Sept. 30, 2015 Membership	Difference Between 2015 and 2016	
Abingdon	620	632	12	101.9%	606	26	4.3%
Arl. Science Focus	671	666	-5	99.3%	662	4	0.6%
Arlington Traditional	542	534	-8	98.5%	502	32	6.4%
Ashlawn	705	668	-37	94.8%	659	9	1.4%
Barcroft	492	453	-39	92.1%	490	-37	-7.6%
Barrett	559	546	-13	97.7%	534	12	2.2%
Campbell	420	431	11	102.6%	419	12	2.9%
Carlin Springs	603	605	2	100.3%	589	16	2.7%
Claremont	733	762	29	104.0%	727	35	4.8%
Discovery	572	595	23	104.0%	534	61	11.4%
Drew	688	680	-8	98.8%	659	21	3.2%
Glebe	573	578	5	100.9%	594	-16	-2.7%
Hoffman-Boston	576	513	-63	89.1%	511	2	0.4%
Jamestown	569	586	17	103.0%	568	18	3.2%
Key	745	705	-40	94.6%	723	-18	-2.5%
Long Branch	594	561	-33	94.4%	570	-9	-1.6%
McKinley	712	729	17	102.4%	610	119	19.5%
Nottingham	489	472	-17	96.5%	443	29	6.5%
Oakridge	824	814	-10	98.8%	781	33	4.2%
Patrick Henry	602	620	18	103.0%	561	59	10.5%
Randolph	472	454	-18	96.2%	466	-12	-2.6%
Reed	61	44	-17	72.1%	39	5	12.8%
Taylor	717	692	-25	96.5%	731	-39	-5.3%
Tuckahoe	586	582	-4	99.3%	679	-97	-14.3%
Total Elementary	14,125	13,922	-203	98.6%	13,657	265	1.9%
Gunston	1,009	949	-60	94.1%	939	10	1.1%
H-B Woodlawn	240	246	6	102.5%	231	15	6.5%
Jefferson	914	959	45	104.9%	865	94	10.9%
Kenmore	907	894	-13	98.6%	885	9	1.0%
Stratford Program	25	26	1	104.0%	22	4	18.2%
Swanson	1,205	1,179	-26	97.8%	1,065	114	10.7%
Williamsburg	1,220	1,215	-5	99.6%	1,130	85	7.5%
Total Middle	5,520	5,468	-52	99.1%	5,137	331	6.4%
Arlington Community*	101	95	-6	94.1%	108	-13	-12.0%
H-B Woodlawn	439	433	-6	98.6%	408	25	6.1%
Langston*	73	76	3	104.1%	69	7	10.1%
Stratford Program	36	33	-3	91.7%	33	0	0.0%
Wakefield	1,920	1,915	-5	99.7%	1,787	128	7.2%
Washington-Lee	2,361	2,330	-31	98.7%	2,258	72	3.2%
Yorktown	1,839	1,880	41	102.2%	1,781	99	5.6%
Total High	6,769	6,762	-7	99.9%	6,444	318	4.9%
Grand Total	26,414	26,152	-262	99.0%	25,238	914	3.6%

* These totals do not include special education or limited English proficient students age 22 and above or other students age 20 and above (adult students).

Color codes % of Projections Below projections Above projections Within +/-5 percentage points of projection

One Year Percent Accuracy: Target 80% of Schools Within 5% of Projection



Note:

A +/- 5 percent annual range of error is an accepted standard for individual school projections one year prior. APS targets that 80% of schools have a 95% enrollment projection accuracy each year.





Arlington
Public
Schools



Prepared by: Lionel A. White,
Director, Facilities Planning
Arlington Public Schools
Lionel.White@APSva.us



@APSVirginia



APSVirginia



/ArlingtonPublicSchools



www.APSva.us